

Modern Trophy Space  
for sublease:  
Plug & Play loft  
with fresh design &  
functional flow

## Le Nordelec

1751 RICHARDSON STREET





# 1751 RICHARDSON STREET

## Historic Charm Meets Modern Innovation

Nestled in Montreal's vibrant Griffintown district, 1751 Richardson offers the perfect blend of historic charm and modern sophistication. This premium property provides exceptional workspace in one of the city's most dynamic neighborhoods, just steps from the picturesque Lachine Canal and minutes from downtown.

With striking architecture that honors Griffintown's industrial heritage while embracing contemporary design, 1751 Richardson delivers an inspiring environment for forward-thinking businesses. Enjoy superior amenities, abundant natural light, and seamless connectivity in a location that puts Montreal's best dining, culture, and transportation options at your doorstep.

Like the iconic Le Nordelec building, 1751 Richardson represents an excellent example of adaptive reuse of industrial heritage, preserving original architectural elements while adapting the space for contemporary use. This thoughtful transformation continues Montreal's tradition of honoring its industrial past while creating vibrant spaces for today's innovative businesses.



Abundant  
Natural Light



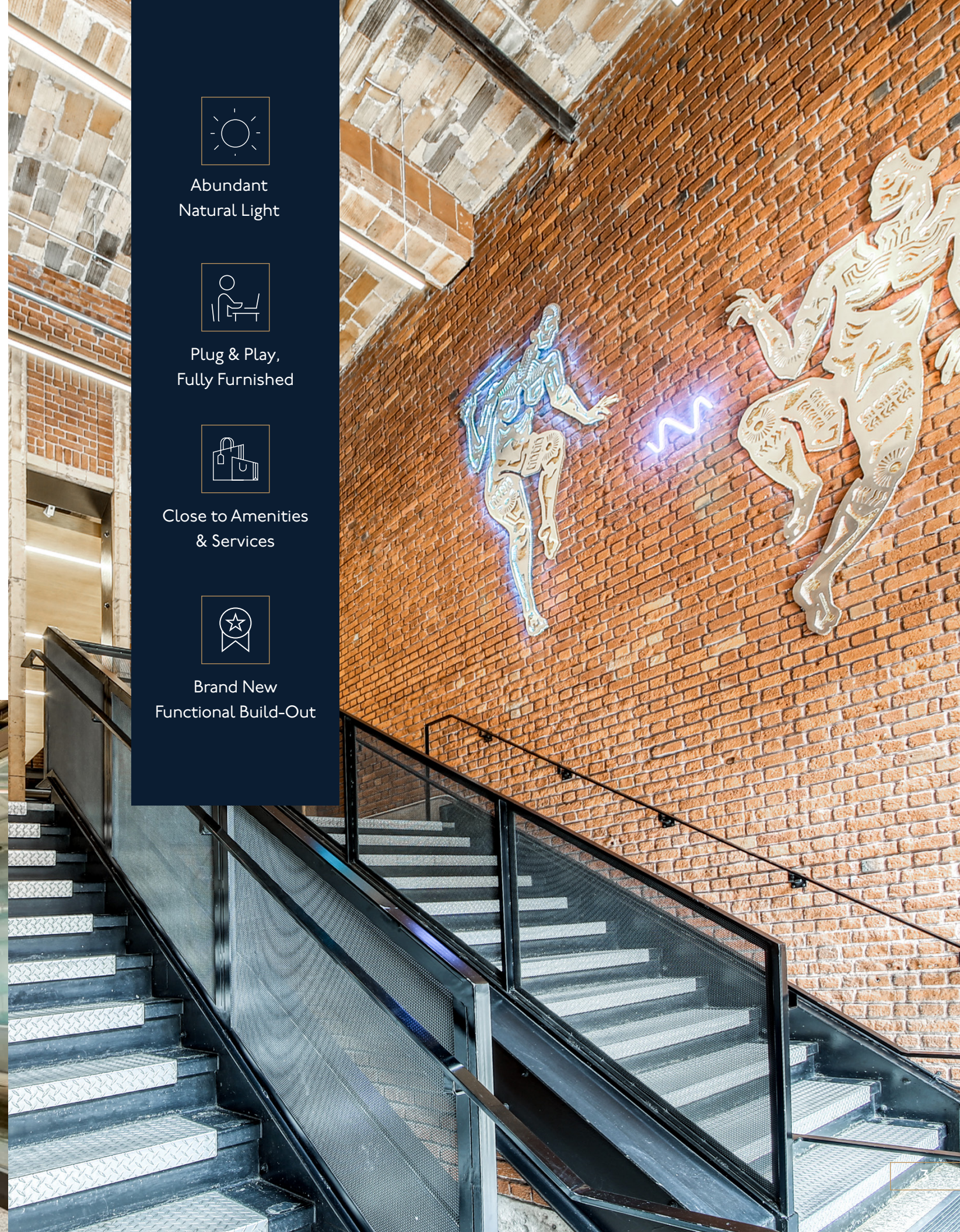
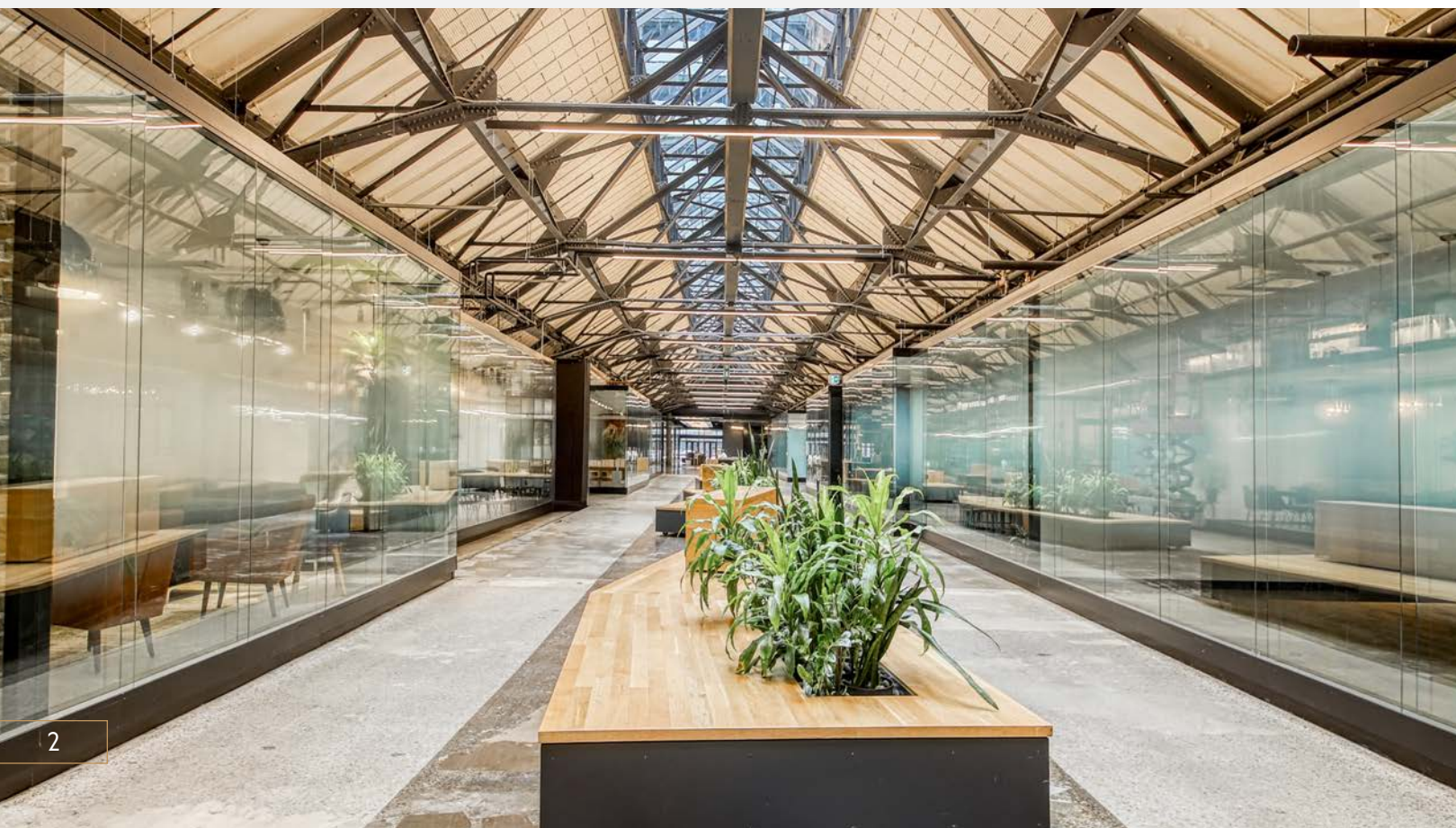
Plug & Play,  
Fully Furnished



Close to Amenities  
& Services



Brand New  
Functional Build-Out





# SPACE OVERVIEW

Floors	8 <sup>th</sup> floor - 9,879 SF
Availability	Immediate
Sublease term	Option A: November 30 <sup>th</sup> , 2028 Option B: January 31 <sup>st</sup> , 2035
Net Rent	Contact Broker
Additional Rent	\$20.15 PSF Hydro and daily cleaning included



4 Parking  
Spaces Available



On-Site  
Fitness center



New Dispatch  
Elevators



On-site  
Restaurants & Cafés

TENANT AMENITIES





# CONNECTIVITY

Nearby Transit & Shopping



94

WALKSCORE™



74

TRANSITSCORE™



97

BIKESCORE™





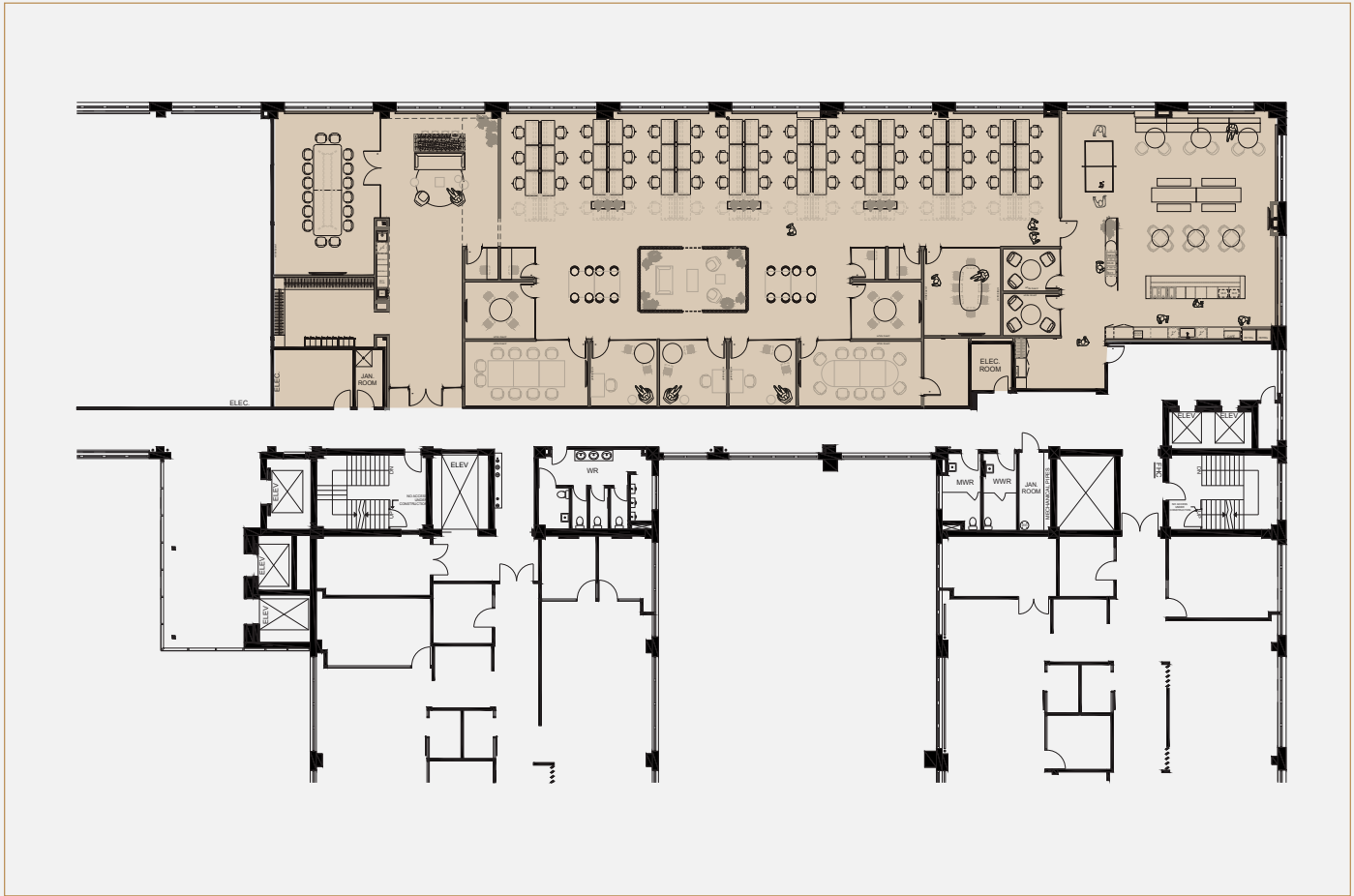
“Where Heritage Meets  
Innovation: Tomorrow’s Success  
Starts in Today’s Most Inspiring  
Workspace”





# FLOOR PLAN

8TH FLOOR





# Office Space For Sublease

## Le Nordelec

1751 RICHARDSON STREET

### Contact our Team

KEVIN LAVIGNE\*

Executive Vice President

Real Estate Broker

+1 514 699 7747

[kevin.lavigne@jll.com](mailto:kevin.lavigne@jll.com)

JAKE SINCLAIR

Associate Vice President

Commercial Real Estate Broker

+1 514 893 5478

[jake.sinclair@jll.com](mailto:jake.sinclair@jll.com)



\*Real Estate Broker acting with the business corporation Services Immobiliers Kevin Lavigne Inc.

Jones Lang Lasalle Real Estate Services, Inc. (Real Estate Agency)

This publication is the sole property of Jones Lang LaSalle and must not be copied, reproduced or transmitted in any form or by any means, either in whole or in part, without the prior written consent of Jones Lang LaSalle. The information contained in this publication has been obtained from sources generally regarded to be reliable. However, no representation is made, or warranty given, in respect of the accuracy of this information. We would like to be informed of any inaccuracies so that we may correct them. Jones Lang LaSalle does not accept any liability in negligence or otherwise for any loss or damage suffered by any party resulting from reliance on this publication. Any opinion or estimate of value of any asset in this presentation is based upon the high-level preliminary review by JLL. It is not the same as the opinion of value in an appraisal developed by a licensed appraiser under the Uniform Standards of Professional Appraisal Practice. JLL expressly disclaims any liability for any reliance on any opinion or estimate of value in this presentation by any party. Copyright © Jones Lang LaSalle IP, Inc. 2025