



For Sublease

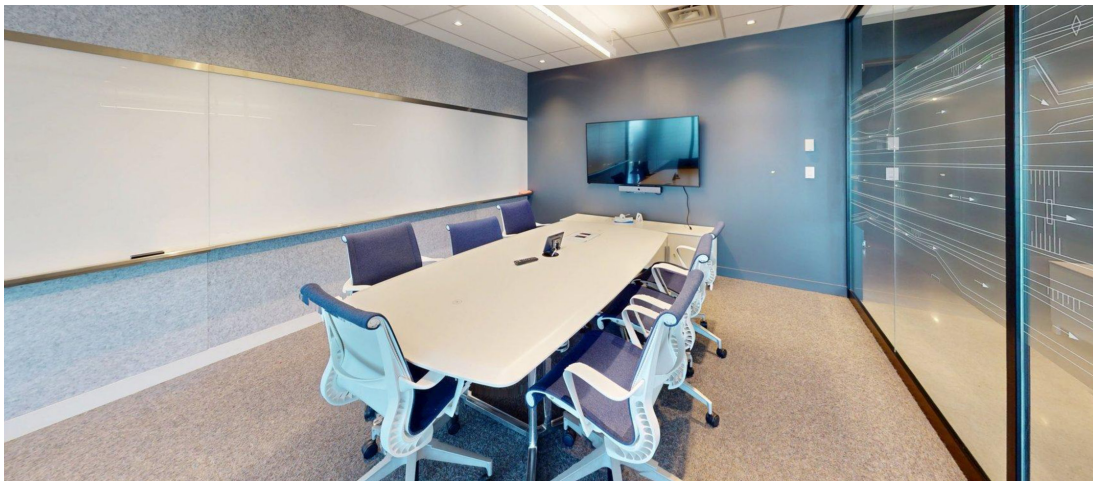
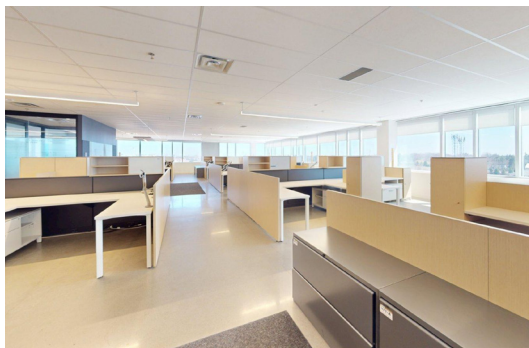
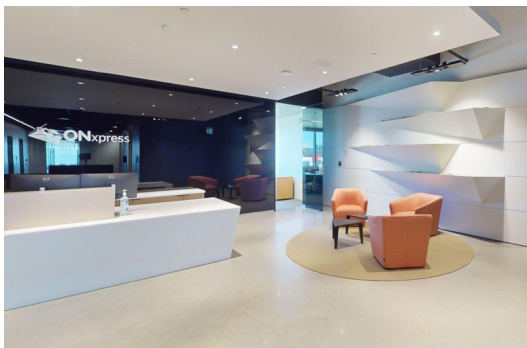
610 Chartwell Road, Oakville ON

\$2.00 PSF cooperating broker fee | 26,961 SF or 53,922 SF

Property details

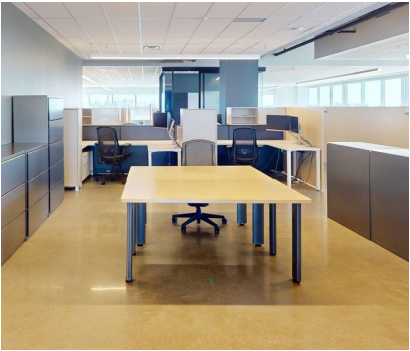
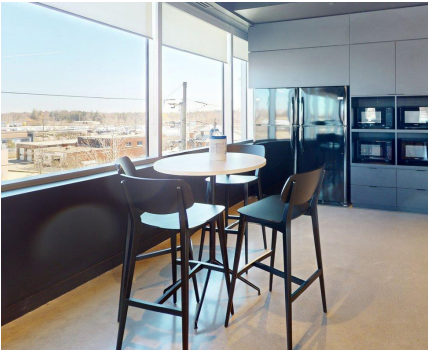
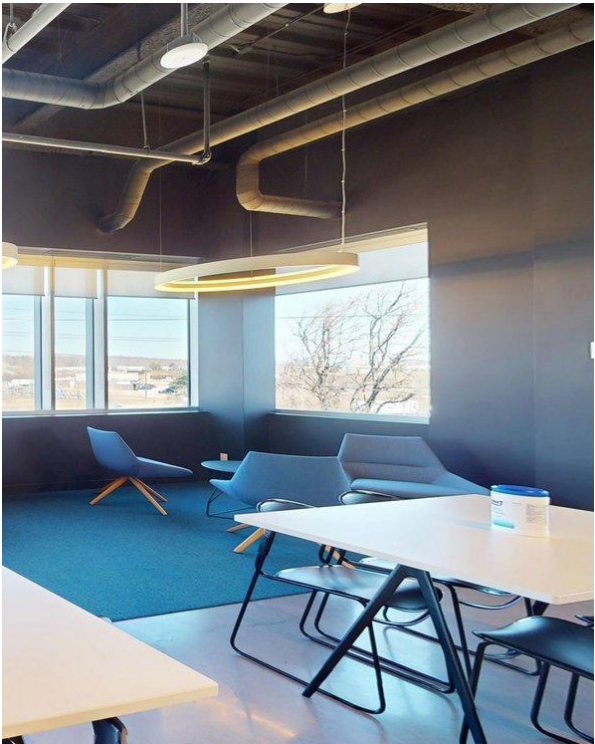
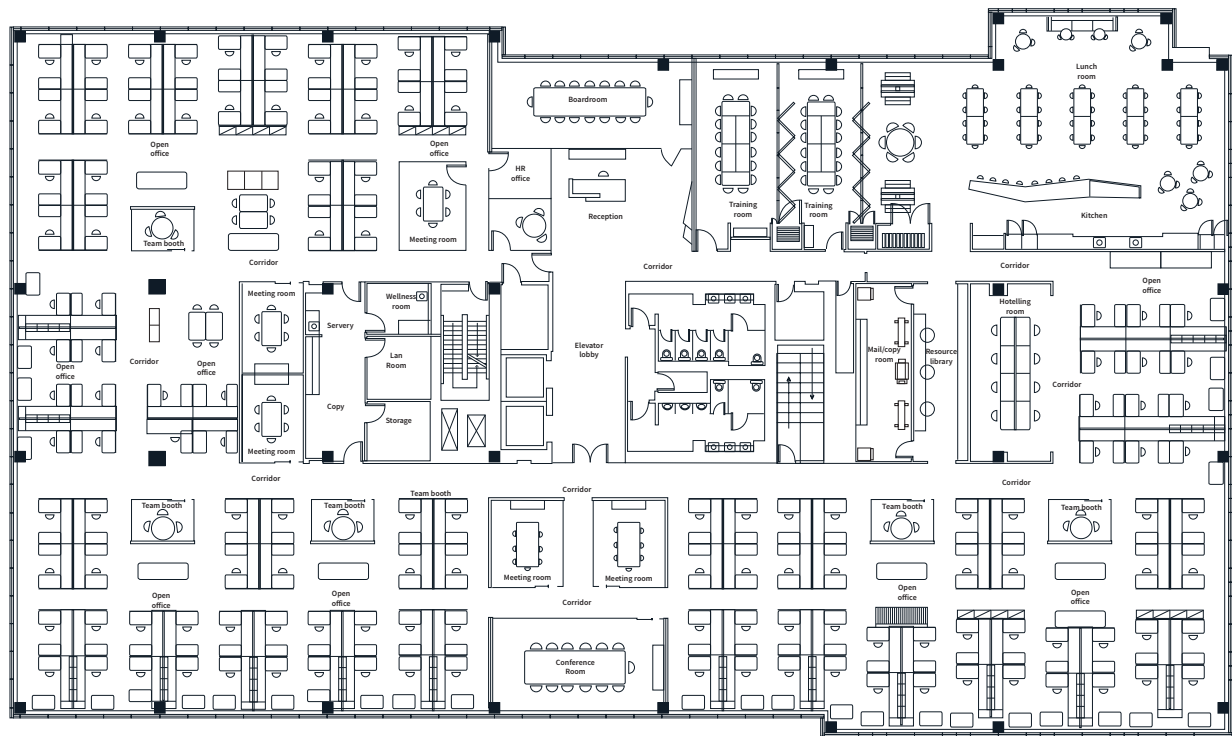
- Class A office building completed in 2017
- Efficient floor plan
- High-end leasehold improvements throughout
- Ample local amenities available
- Furniture is available

Size	26,961 SF or 53,922 SF
Net rent (psf)	Please contact listing Agents
Additional rent (psf)	\$13.05 PSF
Availability	Immediate
Sublease term	To December 30, 2031 (shorter term available)



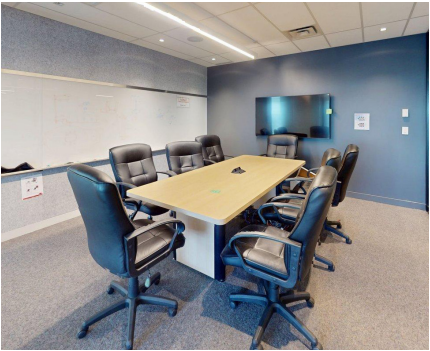
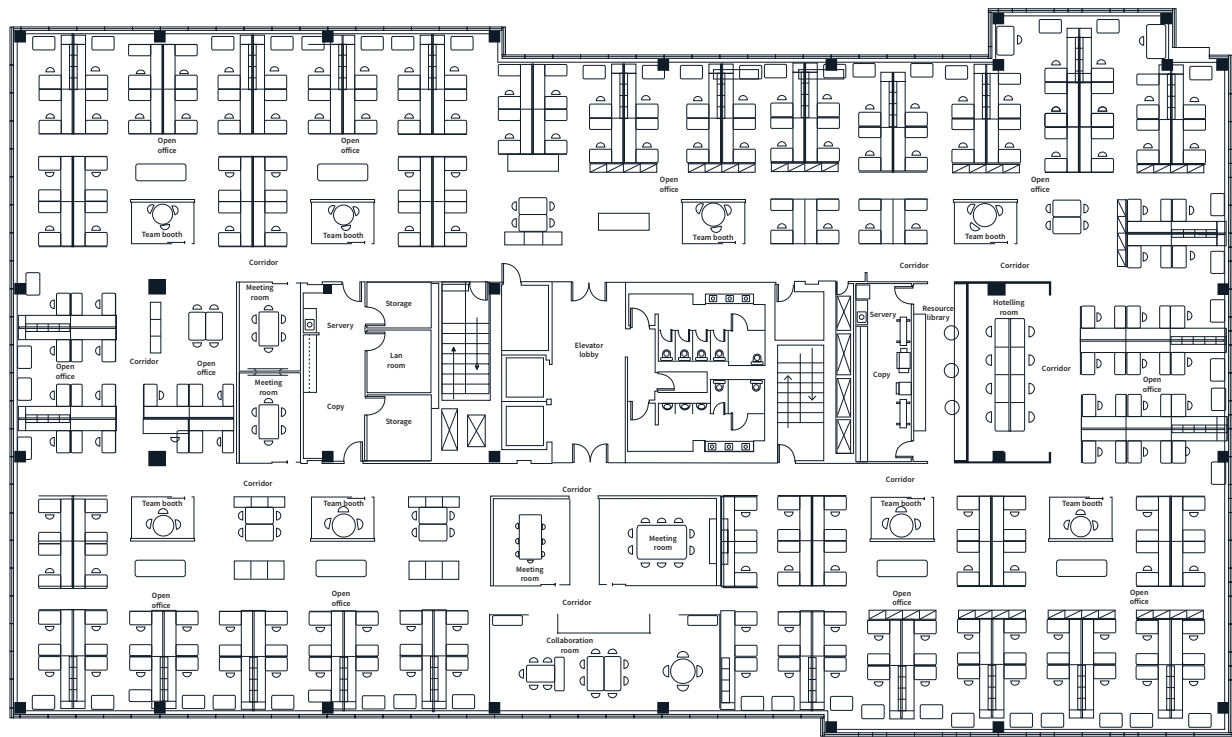
Floorplan - 3rd Floor

[Click for virtual tour](#)



Floorplan - 4th Floor

[Click for virtual tour](#)



Location and local amenities

Legend

- Longos, Starbucks, BMO, Burger Priest
- Whole Foods, Beertown, Shoppers Drugmart, LCBO, RBC
- McDonalds, Swiss Chalet, Esso
- Home Depot, Tim Hortons, Dollarama
- The Bay, Sportchek, Shoppers Drugmart, GoodLife Fitness, H&M, PetSmart
- TD Bank, McDonalds, RBC, Petro-Canada, Tim Hortons
- Burger King

Oakville transit routes



Great exposure from QEW Highway



Convenient access from both South Service Rd and Chartwell Rd



Close proximity to the Oakville GO Station



For more information, please contact:

Sam Meer*

Executive Vice President, Integrated Portfolio Services

sam.meer@jll.com

+1 (416) 722 4942

Graham Stirling

Executive Vice President

graham.stirling@jll.com

+1 (647) 964 4307

Although information has been obtained from sources deemed reliable, JLL does not make any guarantees, warranties or representations, express or implied, as to the completeness or accuracy as to the information contained herein. Any projections, opinions, assumptions or estimates used are for example only. There may be differences between projected and actual results, and those differences may be material. JLL does not accept any liability for any loss or damage suffered by any party resulting from reliance on this information. If the recipient of this information has signed a confidentiality agreement with JLL regarding this matter, this information is subject to the terms of that agreement. ©2025 Jones Lang LaSalle Brokerage, Inc. All rights reserved. *Sales Representative **Broker