

Lago Alberto No. 375

Oficinas Plug & Play en **Renta**



Anáhuac | Secc, Miguel Hidalgo
C.P. 11320, Ciudad de México

Lago Alberto

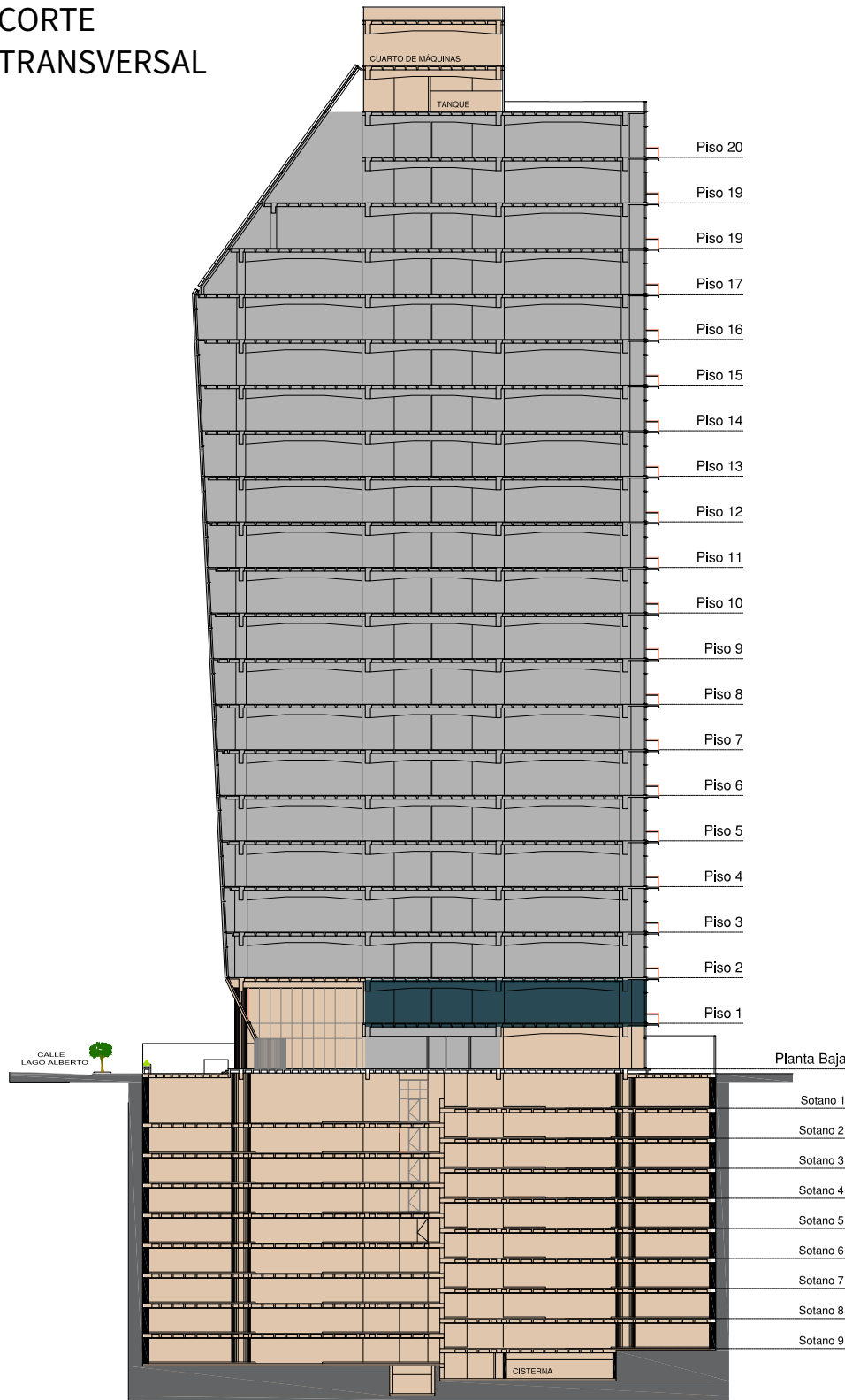
No. 375



DA CLIC PARA EXPLORAR
EL ESPACIO EN EL TOUR
VIRTUAL



CORTE
TRANSVERSAL



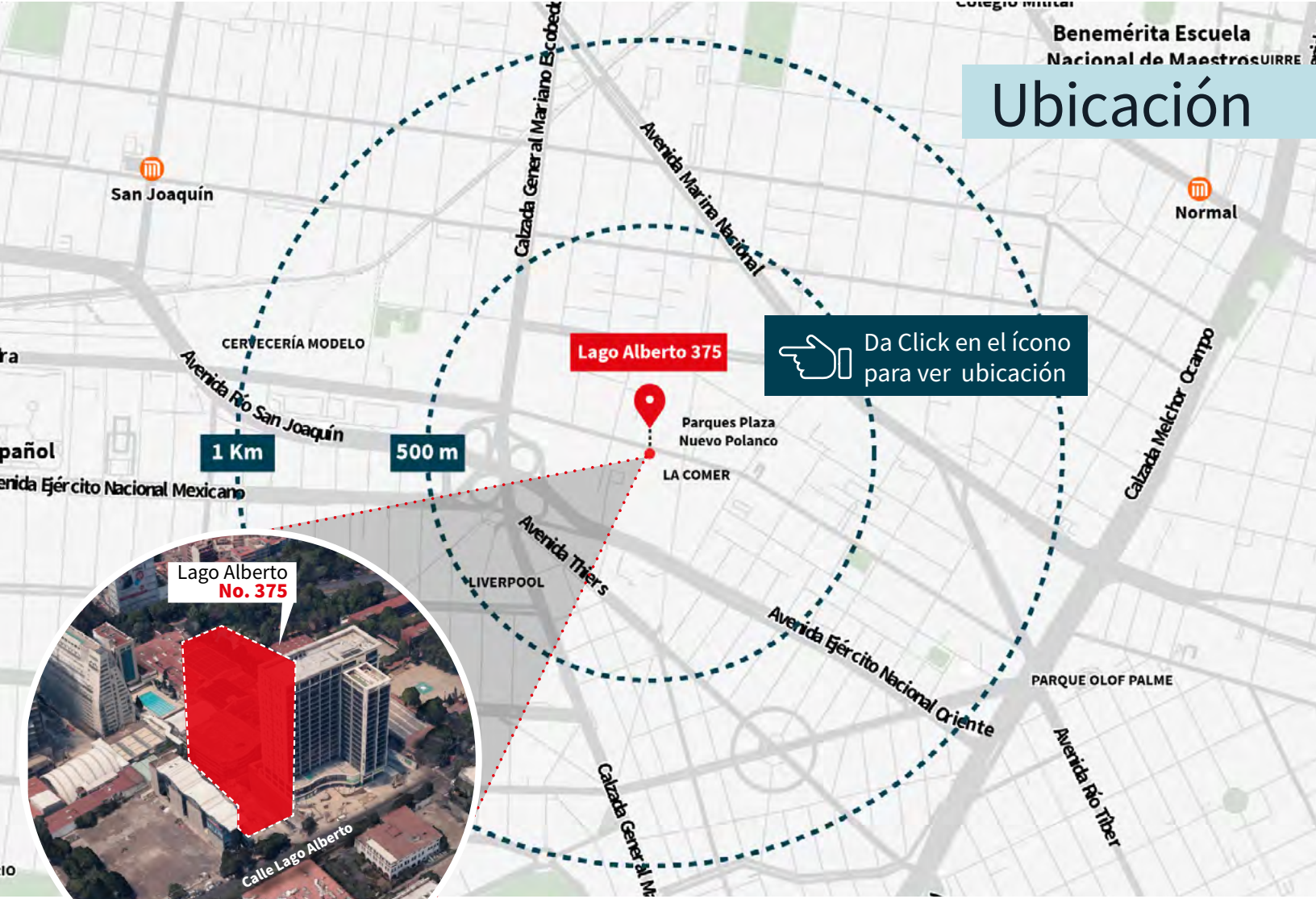
Oficinas Plug & Play en Renta en Edificio Corporativo en colonia Anáhuac en delegación Miguel Hidalgo con cercanía a Centros Comerciales, Servicios, Restaurantes y Vías de Comunicación, sin duda una excelente opción para oficinas en la Ciudad de México.

Disponibilidad

Nivel	Área Rentable	Terraza
1	593.88 m ²	12.96 m ²
Total	593.88 m²	12.96 m²

- Área Disponible
- Área Común
- Área Ocupada

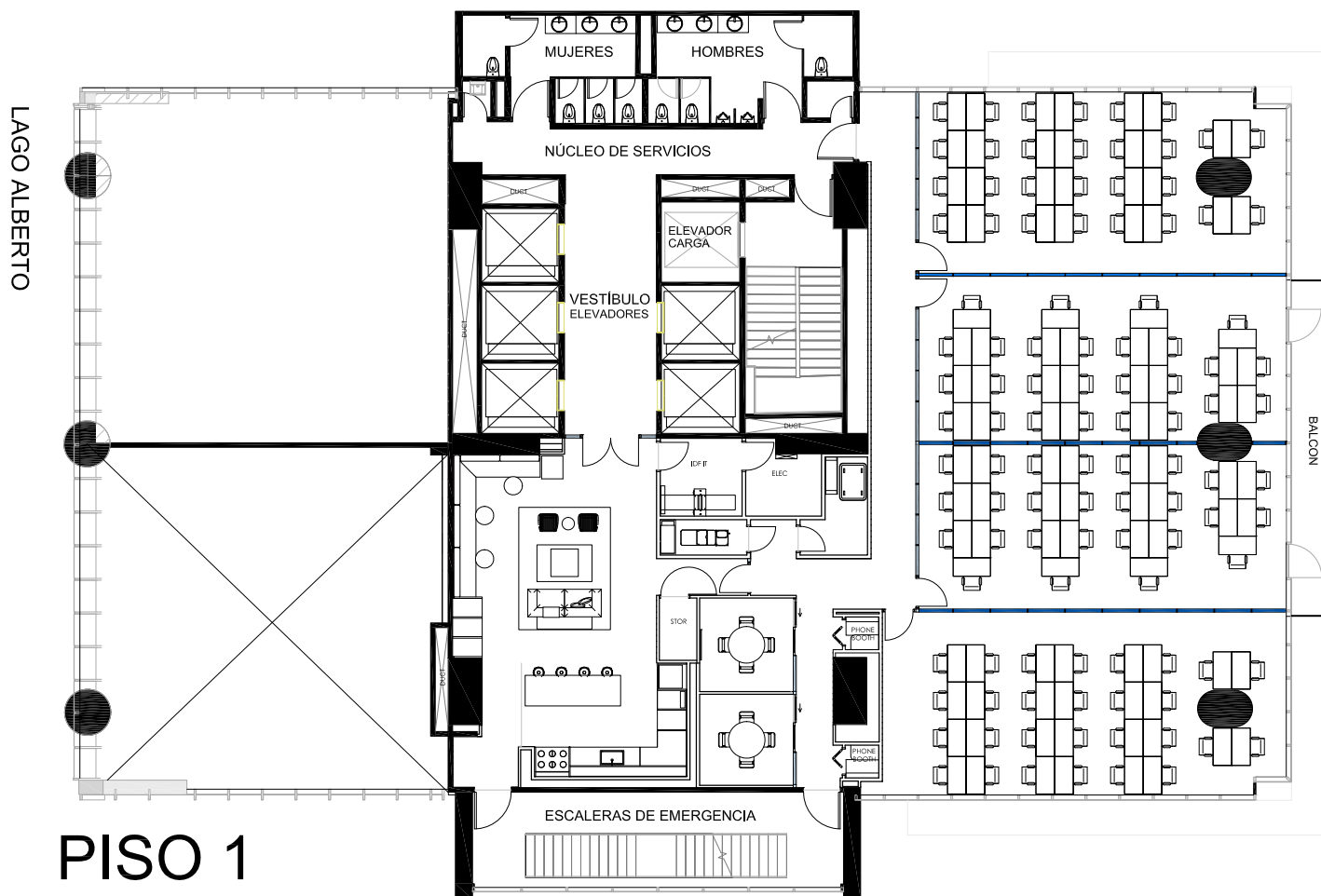
Ubicación



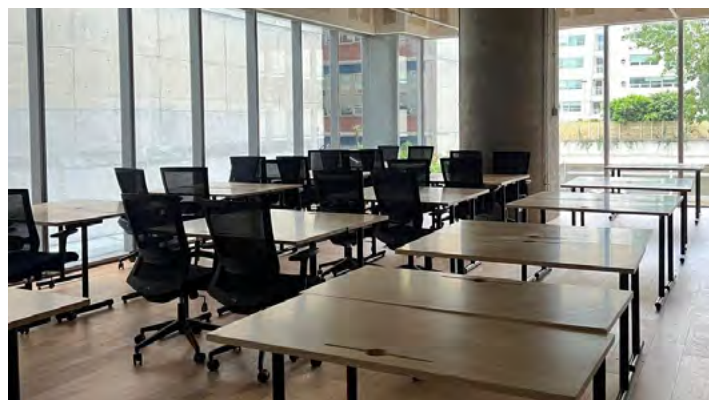
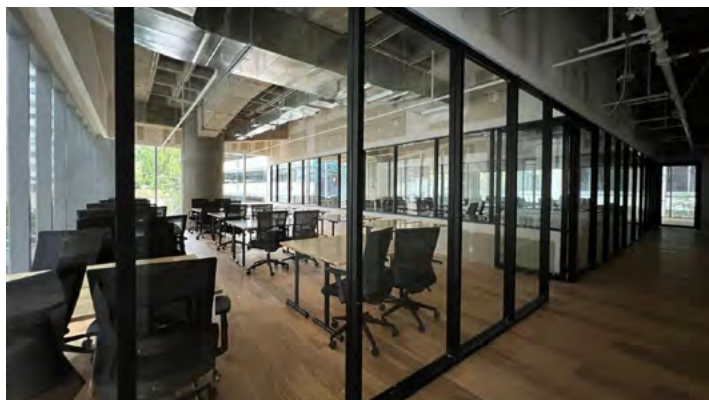
Plano

Área Rentable

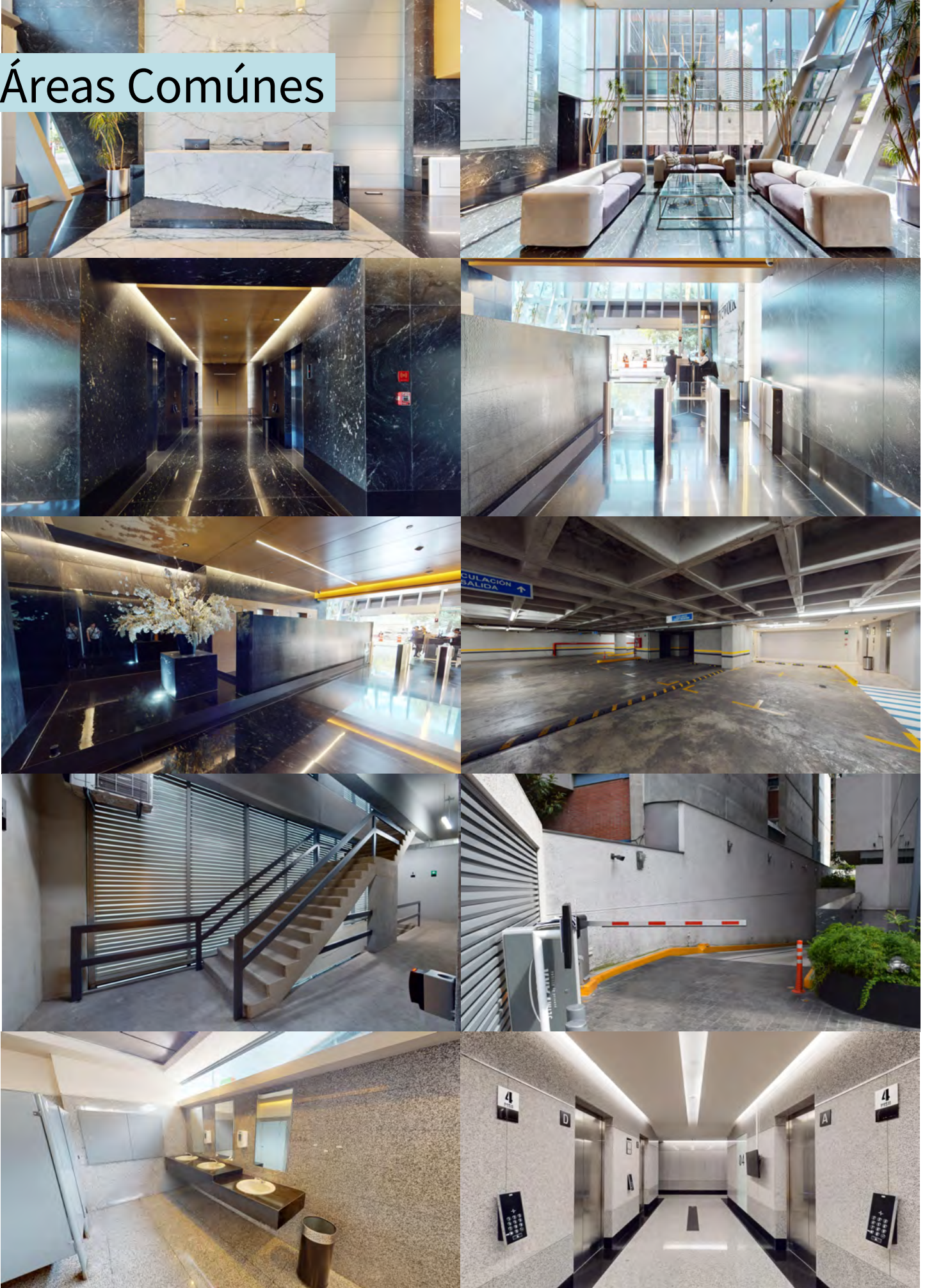
Área Común



PISO 1



Áreas Comunes





SEE A BRIGHTER WAY

Alejandra Santa Cruz

55 80 35 73 57

alejandra.santacruz@jll.com

www.jll.com

© 2024 Jones Lang LaSalle IP, Inc. All rights reserved. The information contained in this document is proprietary to JLL and shall be used solely for the purposes of evaluating this project. All such documentation and information remains the property of JLL and shall be kept confidential. Reproduction of any part of this document is authorized only to the extent necessary for its evaluation. It is not to be shown to any third party without the prior written authorization of JLL. All information contained herein is from sources deemed reliable; however, no representation or warranty is made as to the accuracy thereof.