 **JLL** SEE A BRIGHTER WAY

# For sale

Possible Development  
Opportunity  
26.5 Acres ~

[property.jll.com/en-pr](https://property.jll.com/en-pr)



## About the site

This 26.5-acre parcel of raw land presents an exceptional investment opportunity in Añasco, Puerto Rico.

There is a potential opportunity to re-activate an expired permit for the construction of a 160,000 sq ft retail store, and or explore alternative commercial development options, subject to further confirmation of zoning and permits. Situated at the signalized intersection of PR 2 and PR 402 the property enjoys high traffic counts and visibility and convenient access.

Surrounded by notable stores and retailers such as Walgreens, Supermercado Selectos, McDonald's, Banco Popular, T-Mobile, Marco's Pizza, and more, the property is located central to many residential and commercial areas. Its prime location ensures a steady flow of potential customers and provides ample opportunity for collaboration with neighboring businesses.

Don't miss out on this exceptional opportunity to acquire a piece of land with a range of potential uses. Contact us today to learn more and explore the possibilities offered by this strategically located property in Añasco, Puerto Rico.

Please note that the activation of the expired permit is not guaranteed and is subject to further evaluation and consideration by the relevant authorities. Additionally, alternative commercial development options may be explored to maximize the potential of this property.



### PROPERTY SUMMARY

<b>ADDRESS</b>	Bo. Quebrada Larga, Fincas E y T Añasco, Puerto Rico
<b>LOCATION</b>	<a href="#">18.29880851765804, -67.156541203845</a>
<b>PROPERTY TYPE</b>	Land
<b>LOT SIZE</b>	26.5 Acres~
<b>PARCEL NUMBER</b>	154-046-125-04
<b>ZONING</b>	AR-1
<b>FLOOD ZONE</b>	X



## Gallery



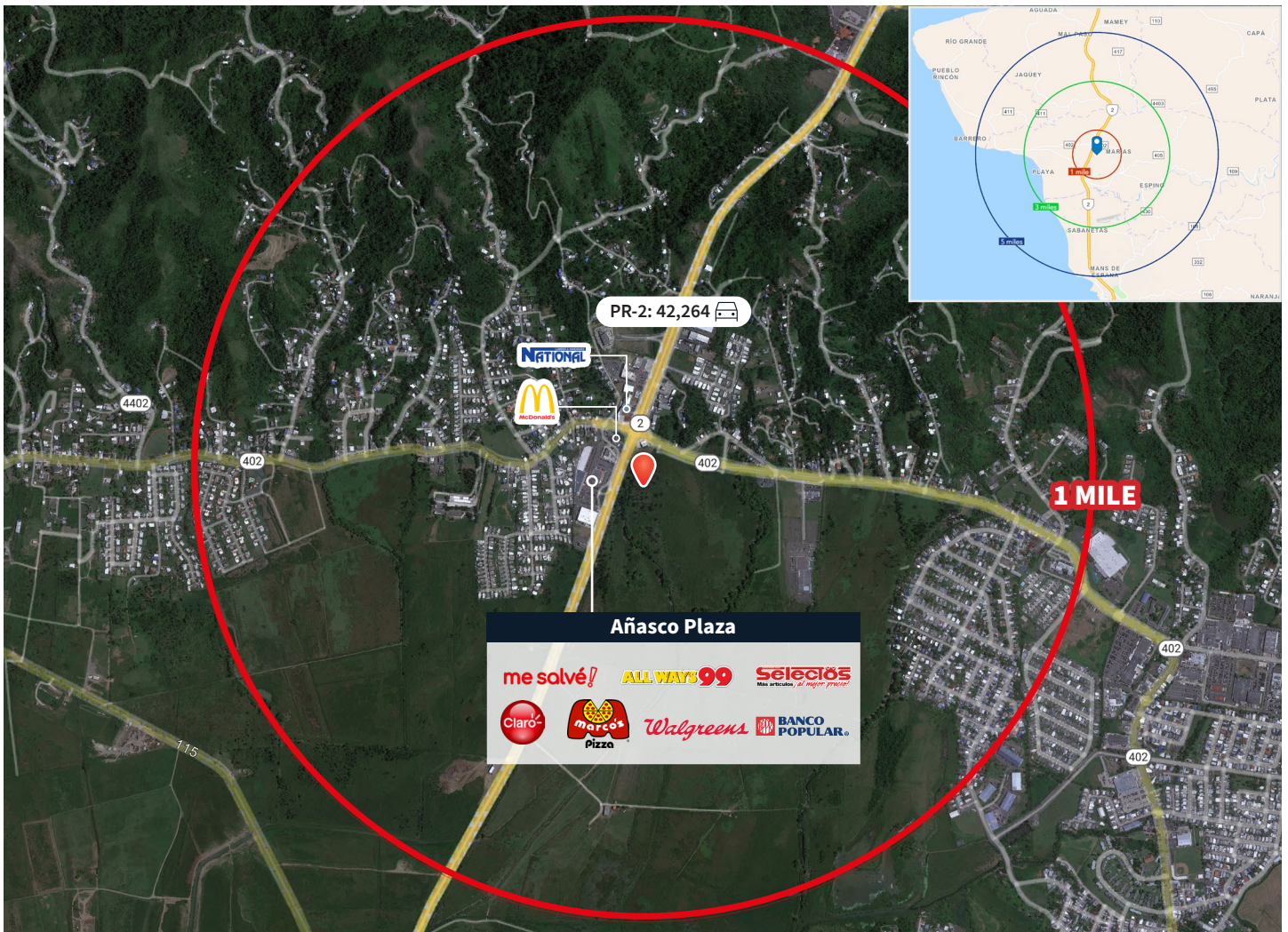


## Location highlights

The site offers exceptional visibility and convenient access along the PR-2 in Añasco, Puerto Rico. Located in proximity to Añasco Plaza, the area benefits from a consistent stream of high-traffic drivers. Renowned retailers such as Walgreens, Selectos, MeSalvé, Always 99, and others contribute to the thriving atmosphere. Additionally, notable establishments like National Lumber and McDonald's, along with various local businesses, are situated nearby.

Demographics	1-mile	3-mile	5-mile
Population	5,995	26,003	59,797
Households	2,386	10,545	24,061
Median HH Income	\$24,906	\$21,543	\$20,028

Source: Esri, 2021



**Franco González**  
Transaction Manager

Lic. # C-23696  
Puerto Rico  
+1 787 635 9301  
+1 787 777 5800  
[franco.gonzalez@jll.com](mailto:franco.gonzalez@jll.com)

**Andy Carlson**  
Market Lead | JLL PR

Lic. # C-17494  
Puerto Rico  
+1 727 403 2503  
+1 787 777 5800  
[andy.carlson@jll.com](mailto:andy.carlson@jll.com)

*Exclusively listed by:*

JLL Puerto Rico Realty & Co., S. En C.  
License Number: E-297  
+1 787 777 5800  
27 González Giusti Street Suite 101,  
Guaynabo PR 00968  
[www.us.jll.com/puerto-rico](http://www.us.jll.com/puerto-rico)

Although information has been obtained from sources deemed reliable, JLL does not make any guarantees, warranties or representations, express or implied, as to the completeness or accuracy as to the information contained herein. Any projections, opinions, assumptions or estimates used are for example only. There may be differences between projected and actual results, and those differences may be material. JLL does not accept any liability for any loss or damage suffered by any party resulting from reliance on this information. If the recipient of this information has signed a confidentiality agreement with JLL regarding this matter, this information is subject to the terms of that agreement. ©2025. Jones Lang LaSalle IP, Inc. All rights reserved.