 **JLL** SEE A BRIGHTER WAY

# For sale

Land Opportunity in Arroyo  
124 +/- acre parcel for agricultural  
use or land banking

[property.jll.com/en-pr](https://property.jll.com/en-pr)

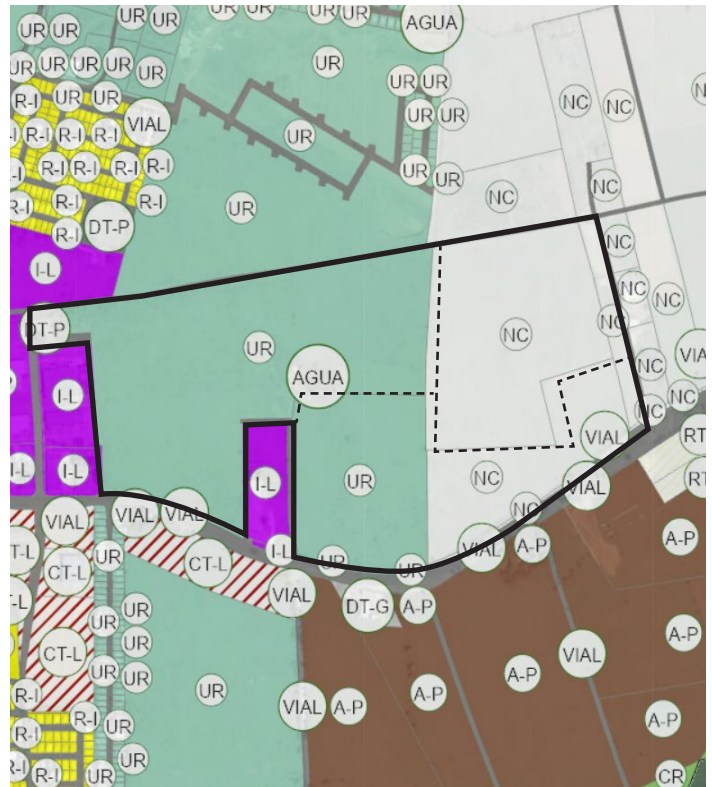
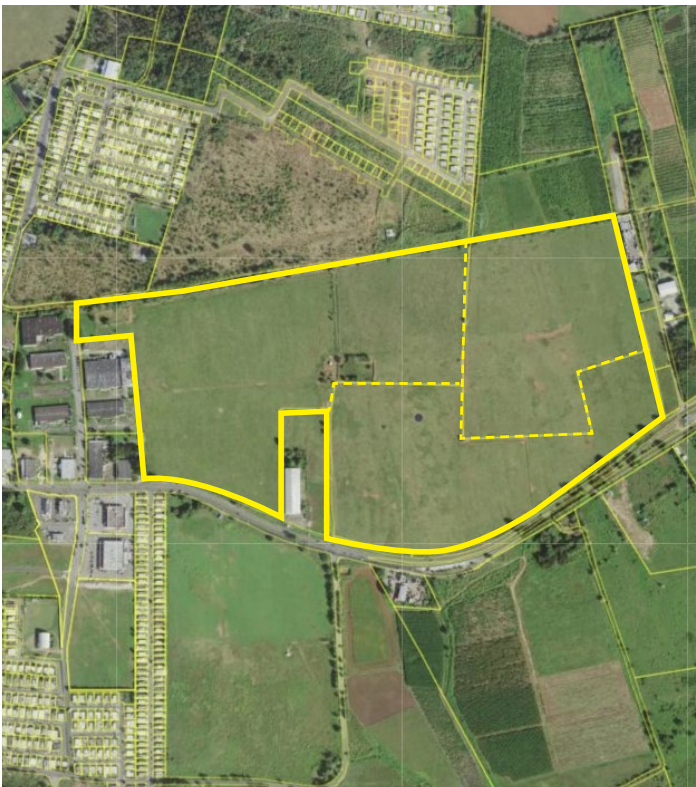


## About the site

Discover an unparalleled opportunity on PR-3 in Arroyo, Puerto Rico: a sprawling 124-acre parcel perfect for active agricultural use or land banking. This prime property offers possibilities for visionary investors and agricultural enthusiasts, combining generous level acreage with with highly desired tropical setting.

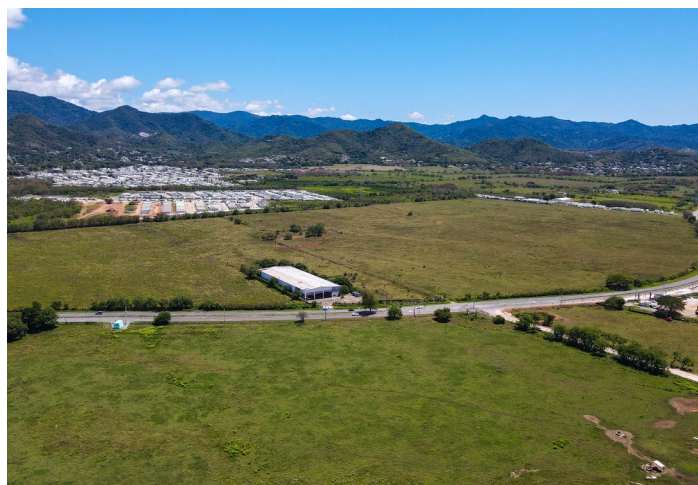
PROPERTY SUMMARY	
<b>ADDRESS</b>	PR-3 Bo. Palmas Arroyo, PR
<b>LOCATION</b>	<a href="#">17.97579674321167, -66.04947727095974</a>
<b>PROPERTY TYPE</b>	Land
<b>LOT SIZE</b>	~124 acres
<b>PARCEL NUMBER</b>	72-421-000-006-04, 72-421-000-007-32 & 72-421-000-007-33
<b>ZONING</b>	UR, NC
<b>FLOOD ZONE</b>	X (No flood zone)

## Aerial and Zoning Map





## Gallery





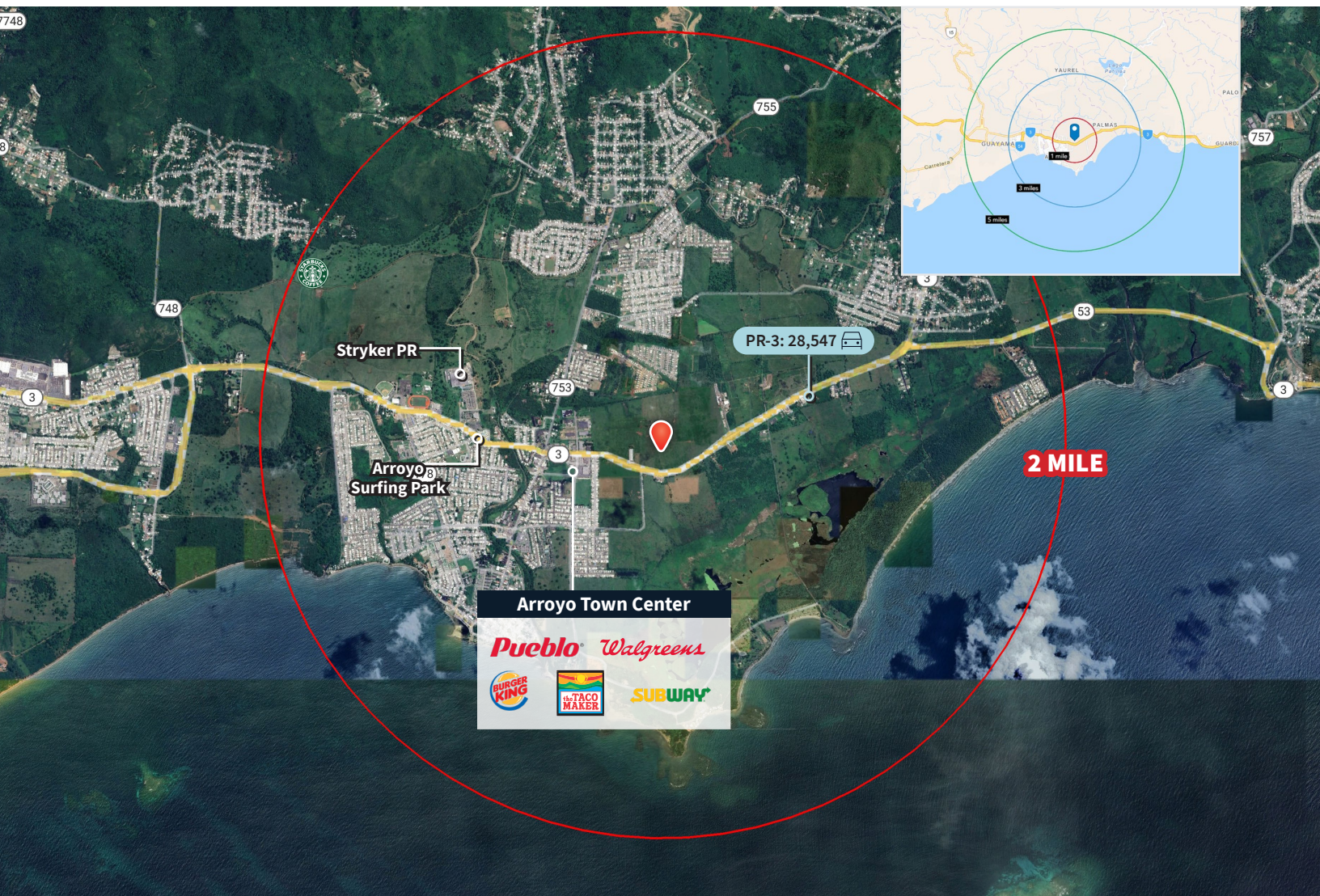
## Location highlights

The site offers excellent visibility and access along PR-3 in Arroyo, with a total average daily traffic of 28,547 cars. Within 2 miles: Arroyo Town Center, Stryker PR, residential areas, among others.

Demographics	1-mile	3-mile	5-mile
Population	6,540	24,117	55,885
Households	2,307	8,593	20,415
Purchasing Power*	\$12,624	\$14,000	\$14,040

Source: Esri, 2022 | \* Per Capita

**Traffic Count:** PR-3: 28,547



**Tom Provost**  
Transaction Advisor

Puerto Rico Lic. # C-22607  
+1 787-221-6660  
+1 787 777 5800  
tom.provost@jll.com

**Andy Carlson**  
Market Lead | JLL PR

Puerto Rico Lic. # C-17494  
+1 727 403 2503  
+1 787 777 5800  
andy.carlson@jll.com

*Exclusively listed by:*

JLL Puerto Rico Realty & Co., S. En C.  
License Number: E-297  
+1 787 777 5800  
27 González Giusti Street Suite 101,  
Guaynabo PR 00968  
[www.us.jll.com/puerto-rico](http://www.us.jll.com/puerto-rico)

Although information has been obtained from sources deemed reliable, JLL does not make any guarantees, warranties or representations, express or implied, as to the completeness or accuracy as to the information contained herein. Any projections, opinions, assumptions or estimates used are for example only. There may be differences between projected and actual results, and those differences may be material. JLL does not accept any liability for any loss or damage suffered by any party resulting from reliance on this information. If the recipient of this information has signed a confidentiality agreement with JLL regarding this matter, this information is subject to the terms of that agreement. ©2025. Jones Lang LaSalle IP, Inc. All rights reserved.