



# *Asia Square Tower 1*

---

Availabilities as of July 2024

*Subject to Contract & Availability*



# Availabilities as of July 2024

| Level | Area (Sf)                | Availability                           | Remarks   |
|-------|--------------------------|--|---|
| 10    | 7,519                    | Immediate                              | Lobby Frontage,<br>City View                    |
| 12    | Approx. 3,169 – 4,214 sf | <b>Brand New Fit-out</b>               | -   |
| 14    | 3,962                    | Immediate                              | Corner Unit,<br>City & Bay View                 |
| 14    | 1,859                    | Immediate                              | Sea View  |
| 15    | 1,992                    | Immediate,<br><b>Fitted</b>            | Lobby Frontage,<br>City View                    |
| 27    | Approx. 2,130            | Immediate                              | Lobby Frontage,<br>City View                    |
| 27    | Approx. 4,259            | Immediate                              | Lobby Frontage,<br>Sea View                     |
| 28    | 7,044                    | Immediate,<br><b>Brand New Fit-out</b> | Corner Unit,<br>Sea View                        |
| 31    | Approx. 7,709            | Immediate                              | Corner Unit,<br>Bay & City View                 |
| 35    | 3,956                    | Immediate                              | Corner Unit,<br>Sea & City View                 |
| 39    | 6,647                    | Immediate                              | Lobby Frontage,<br>Corner Unit, Bay & City View |
| 41    | Approx. 3,375            | Immediate                              | Corner Unit,<br>Sea & City View                 |

*Subject to Contract & Availability*





# A New Experience: Tenant Lounge

---











### **FREQUENTLY ASKED QUESTIONS:**

**What are the operating hours?** The lounge is open from Mondays to Fridays 9am to 5pm excluding Public Holidays

**How do I access the lounge?** Access the lounge via building access card

**Can I bring guests into the lounge?** You may bring in only 2 registered guests at any one time

**What amenities does the lounge offer?** Free Wi-Fi, audio and visual conferencing services

**Can I eat and drink in the lounge?** Only non-alcoholic drinks are allowed in the lounge





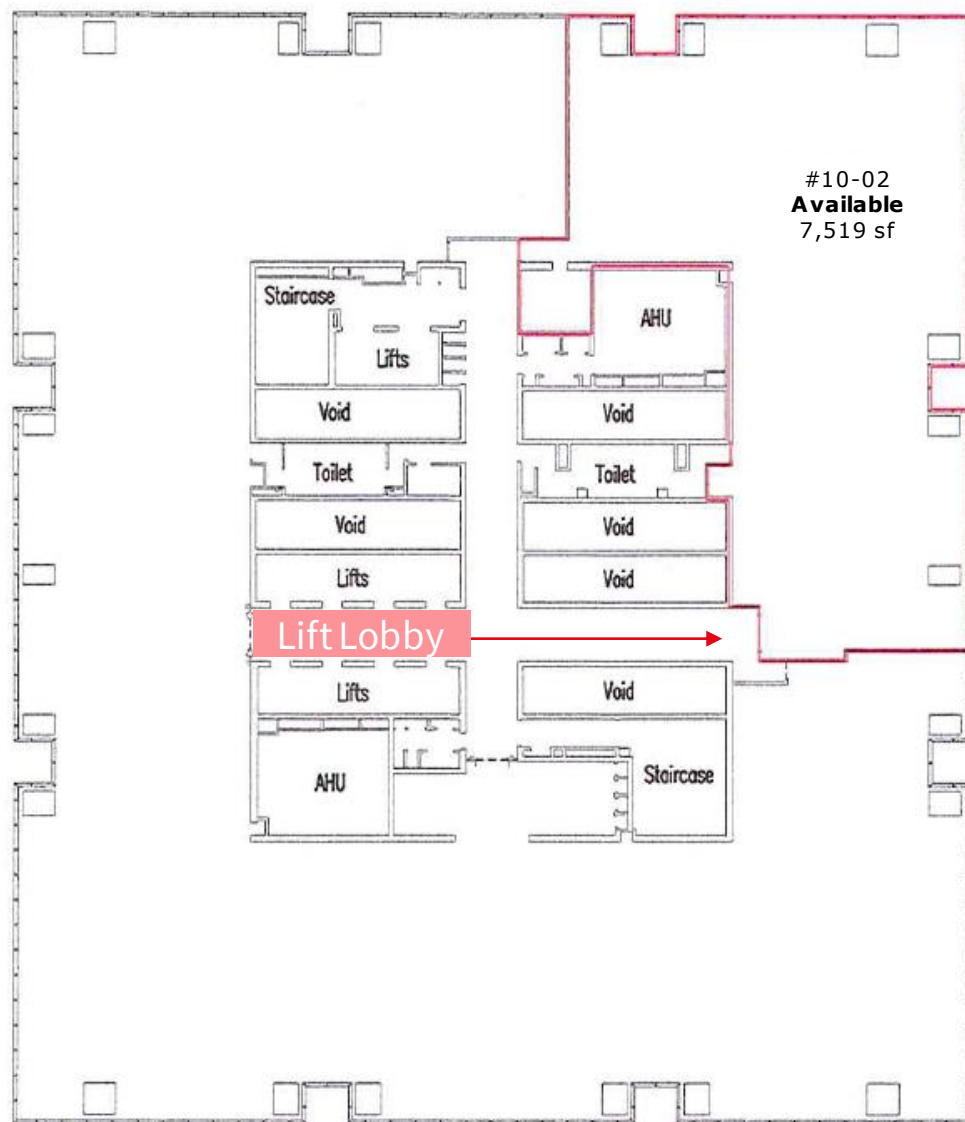
# Upgraded Office Washrooms

---



# Level 10-02 (7,518.65 sf)

Bare and Available Immediately; Lobby Frontage, City View



*Subject to Contract & Availability*

# Level 12-03 and Level 12-06 (3,169 & 4,214 sf)

**Brand new fit-out** and Available Immediately

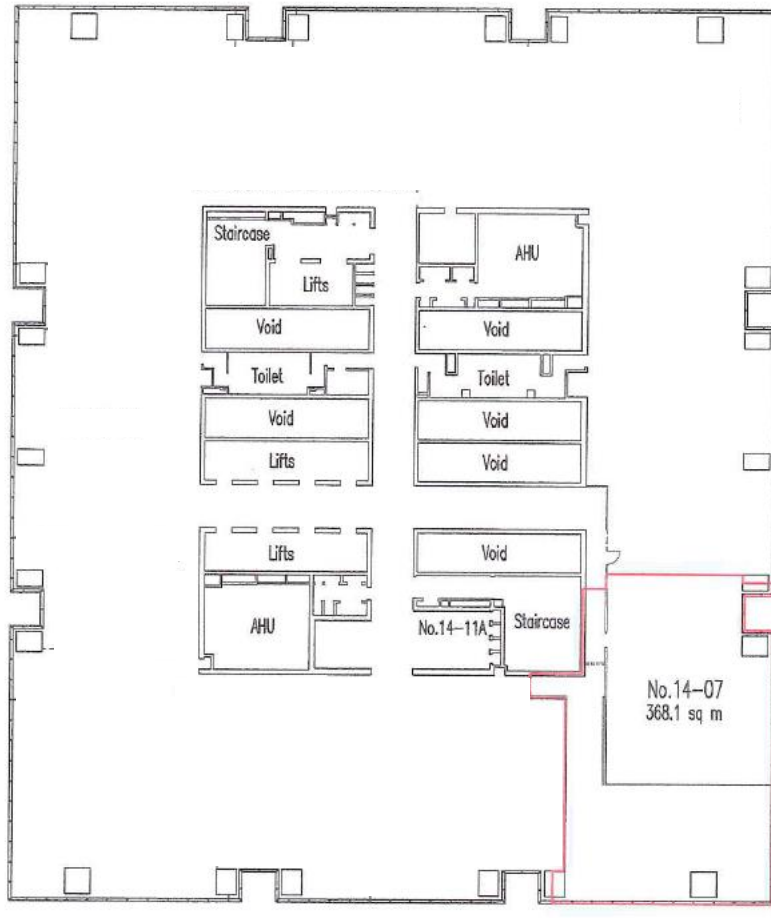


*Subject to Contract & Availability*



# Level 14-07 (3,962.23 sf)

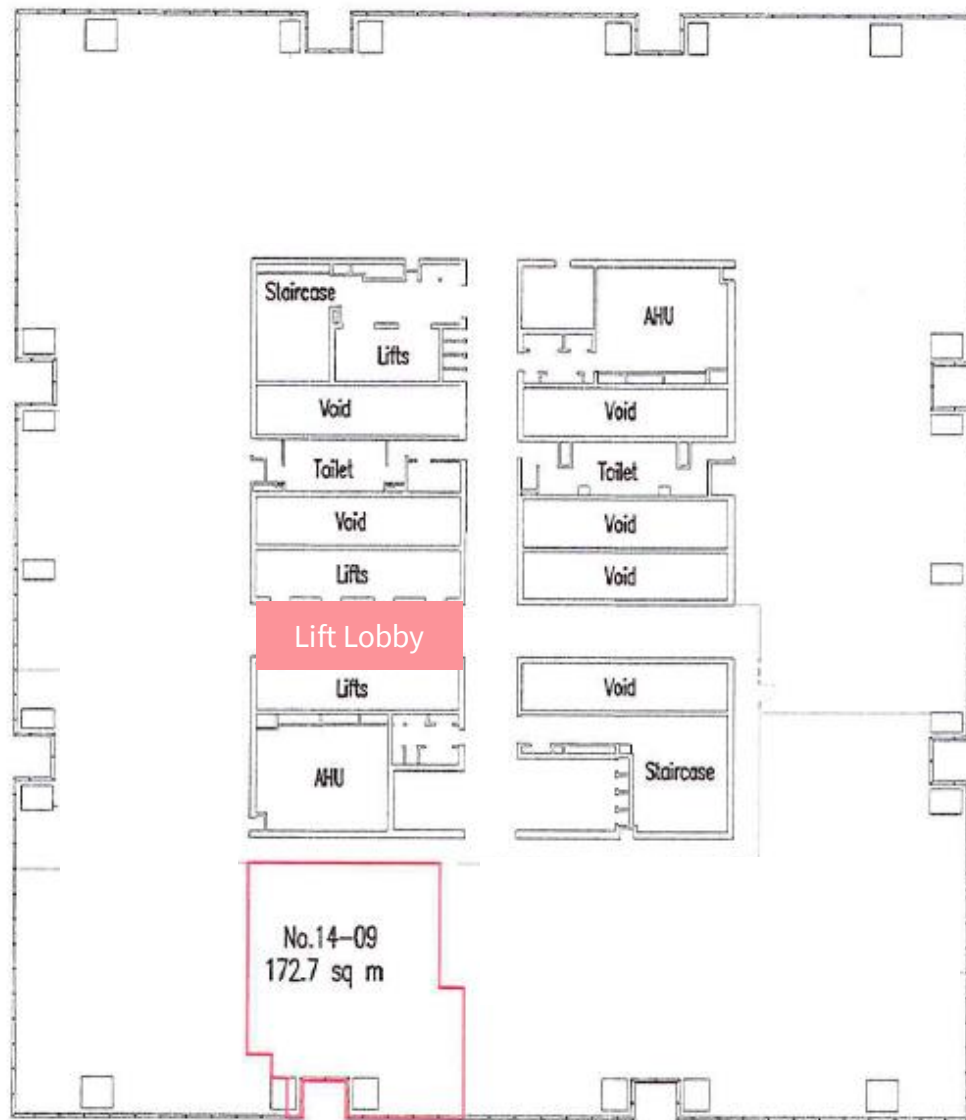
Bare and Available Immediately; City & Bay View



*Subject to Contract & Availability*

# Level 14-09 (1,858.94 sf)

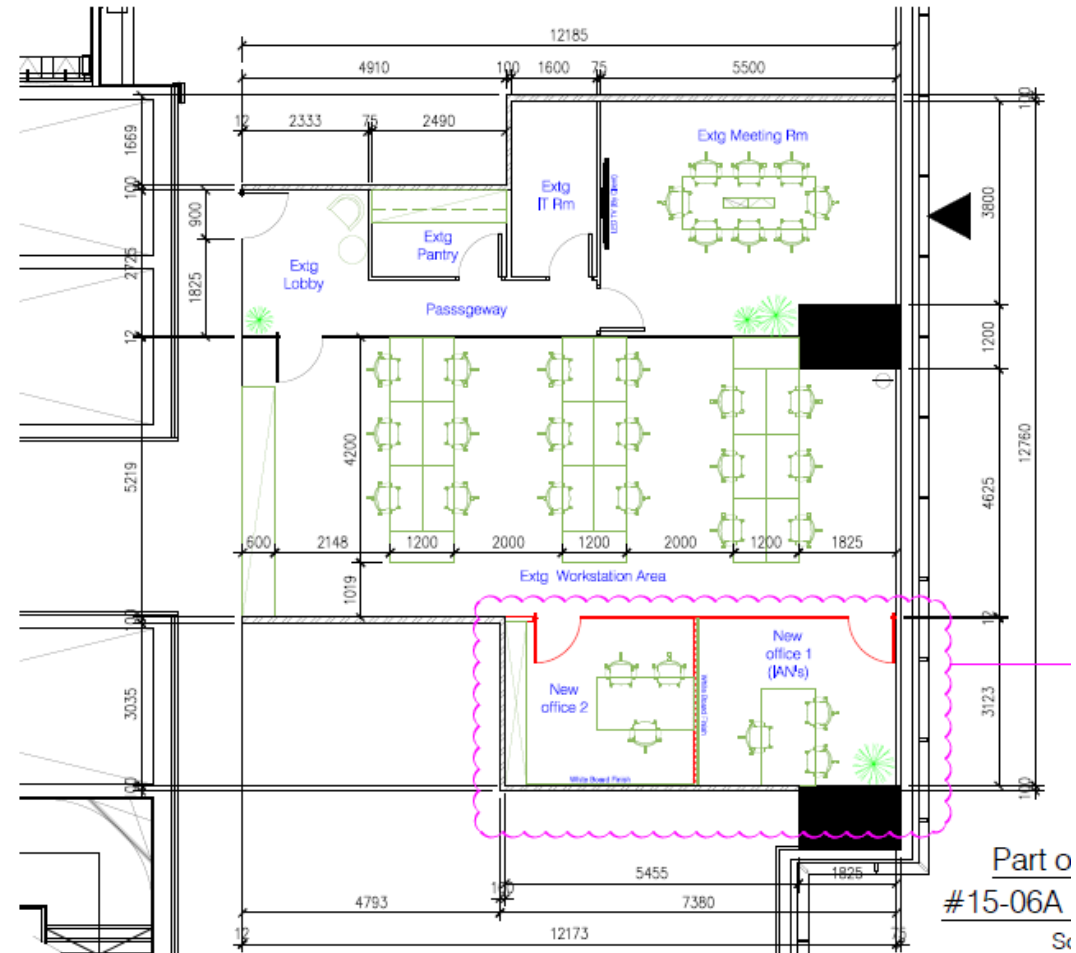
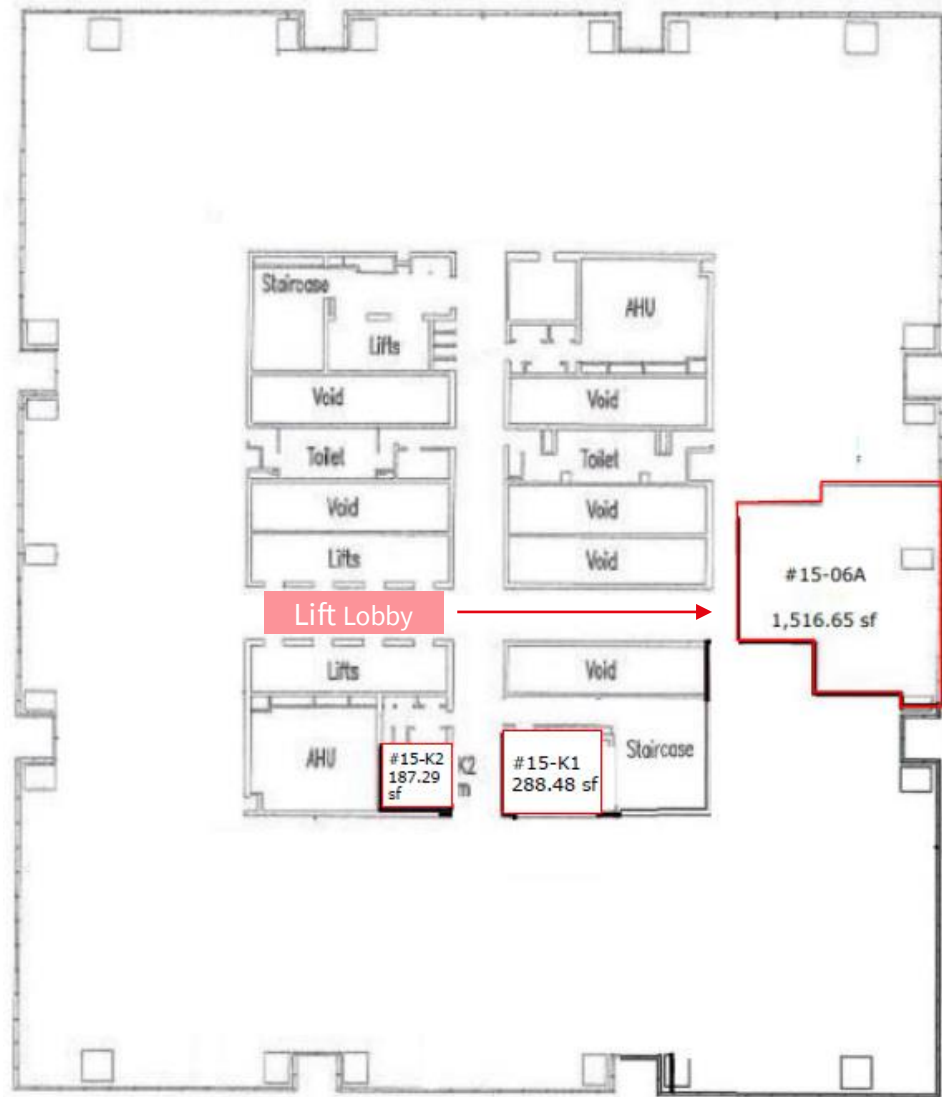
Bare and Available Immediately; Sea View



*Subject to Contract & Availability*



Fitted and Available Immediately; Lobby Frontage, City View



*Subject to Contract & Availability*

# Level 27-03A (c. 2,130 sf)

Bare and Available Immediately; Lobby Frontage, City View

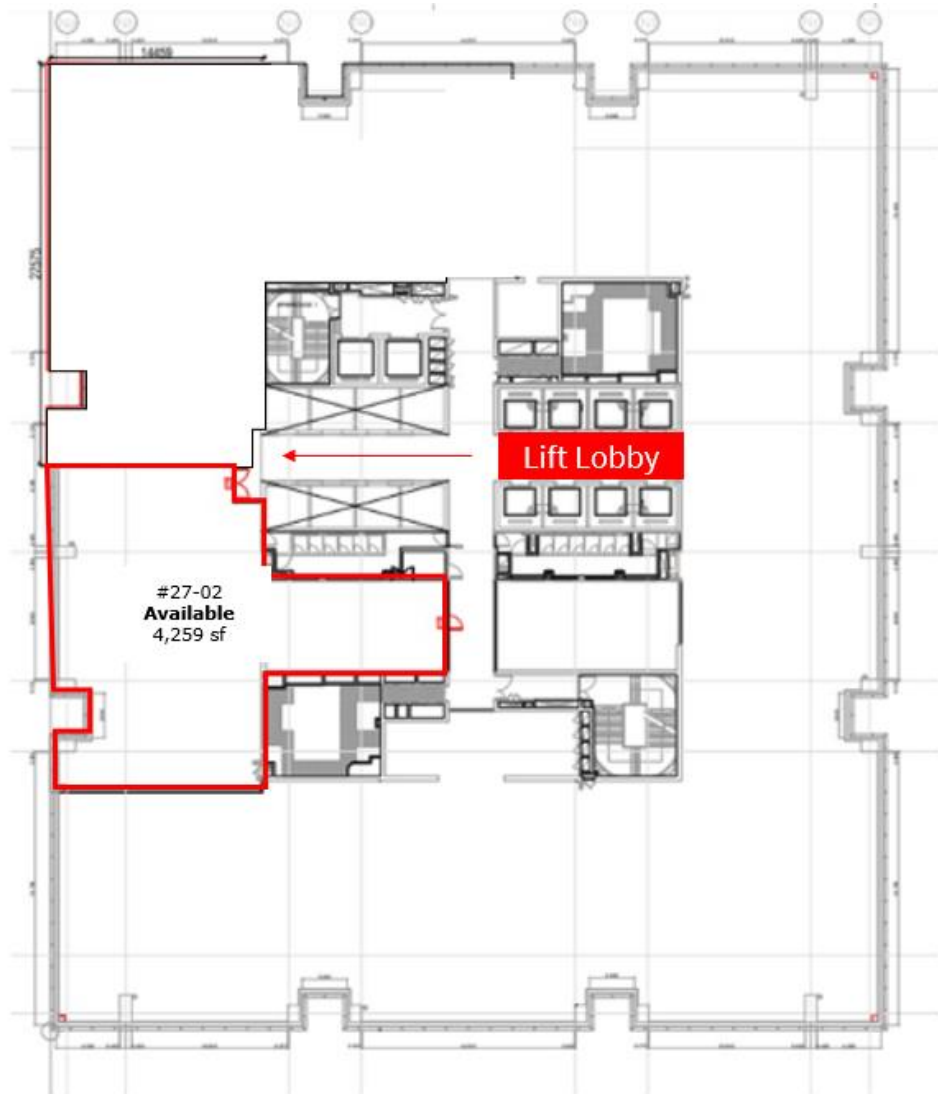


*Subject to Contract & Availability*



# Level 27-02 (c. 4,259 sf)

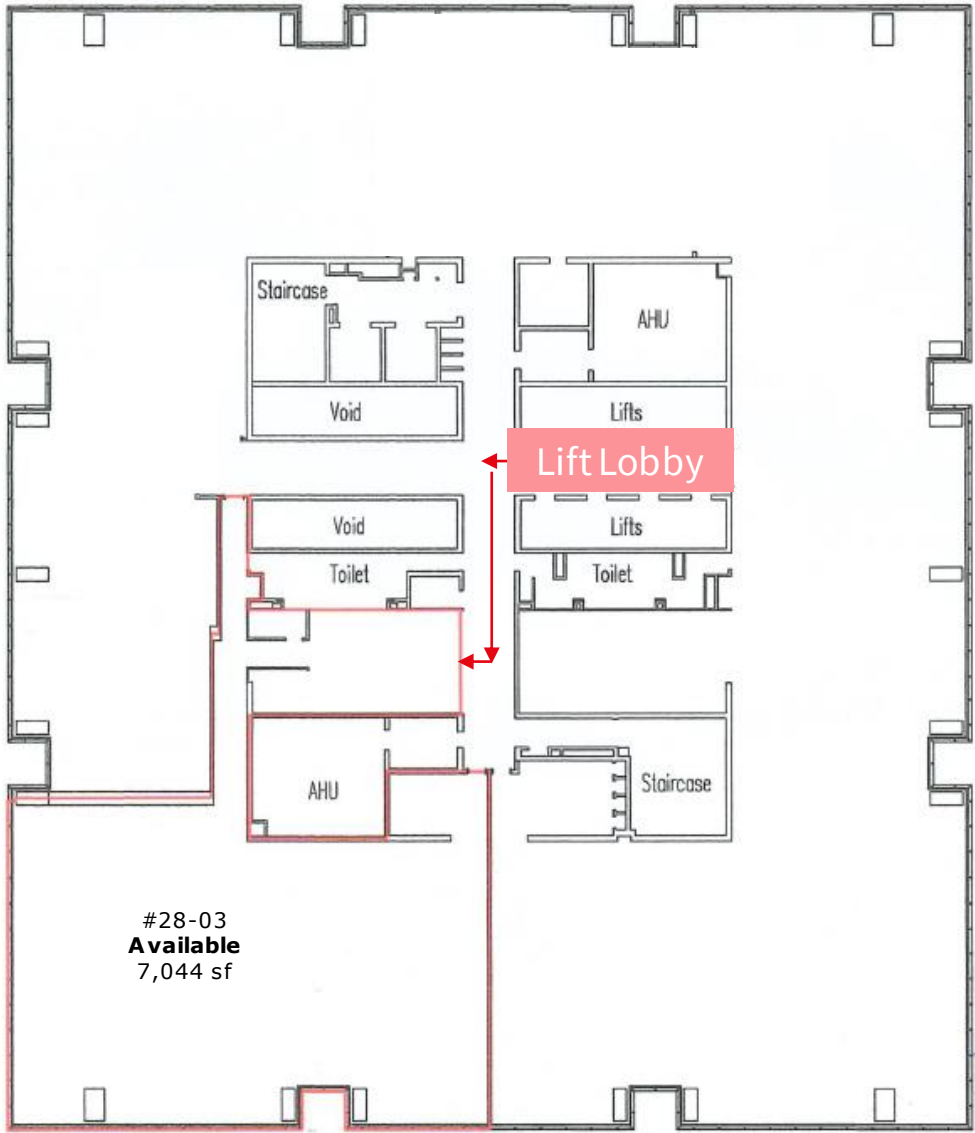
Bare and Available Immediately; Lobby Frontage, Sea View



*Subject to Contract & Availability*

# Level 28-03 (7,043.96 sf)

**Brand new fit-out** and Available Immediately; Corner Unit, Sea View

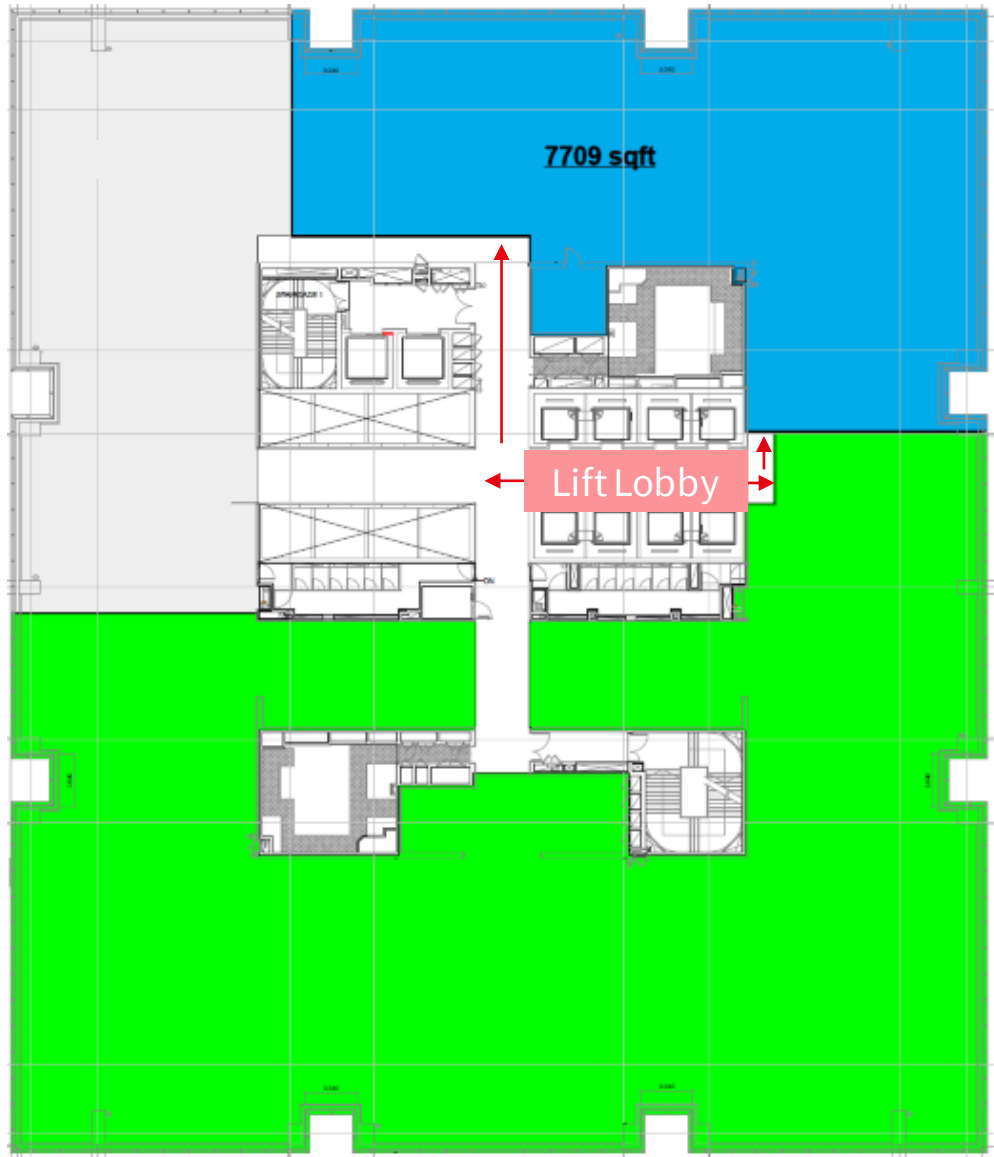


*Subject to Contract & Availability*



# Level 31-03 (c. 7,709 sf)

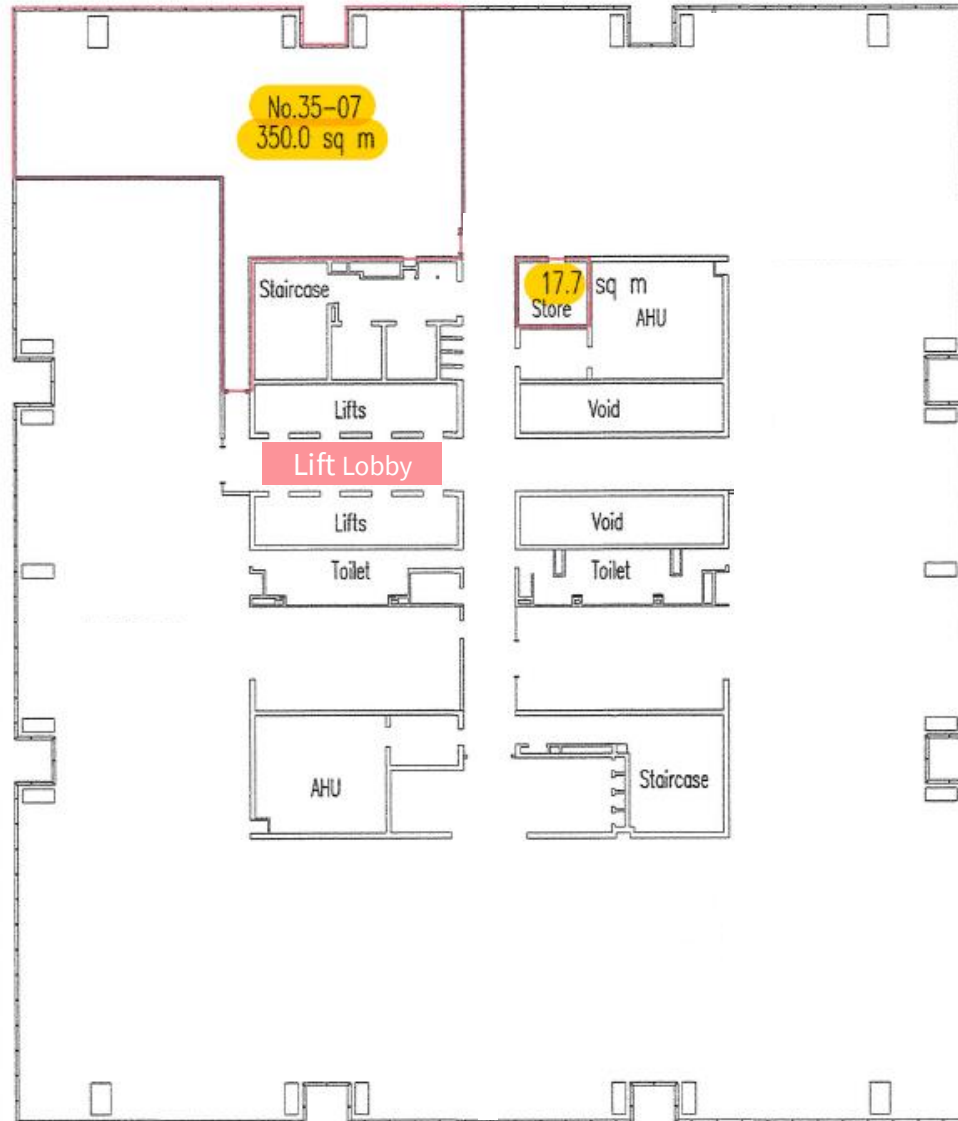
Bare and Available Immediately; Corner Unit, Bay & City View



*Subject to Contract & Availability*

# Level 35-07 (3,957.92 sf)

Bare and Available Immediately; Corner Unit, Sea & City View

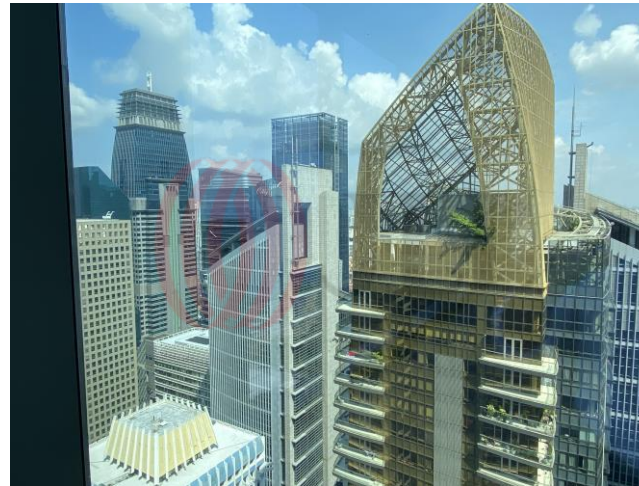


*Subject to Contract & Availability*



# Level 35-07 Photos

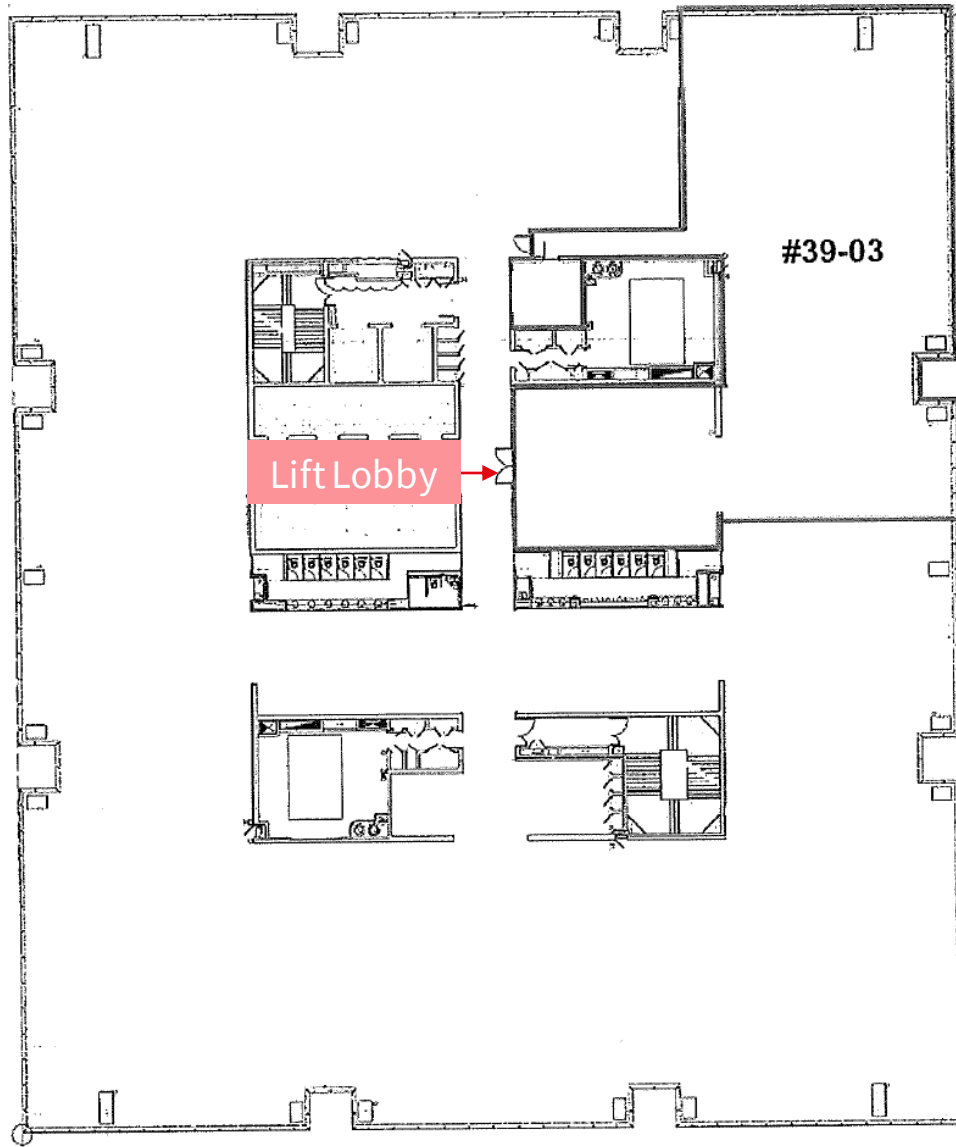
Bare and Available Immediately; Corner Unit, Sea View



*Subject to Contract & Availability*

# Level 39-03 (6,646.77 sf)

Bare and Available Immediately; Lobby Frontage, Corner Unit, Bay & City View

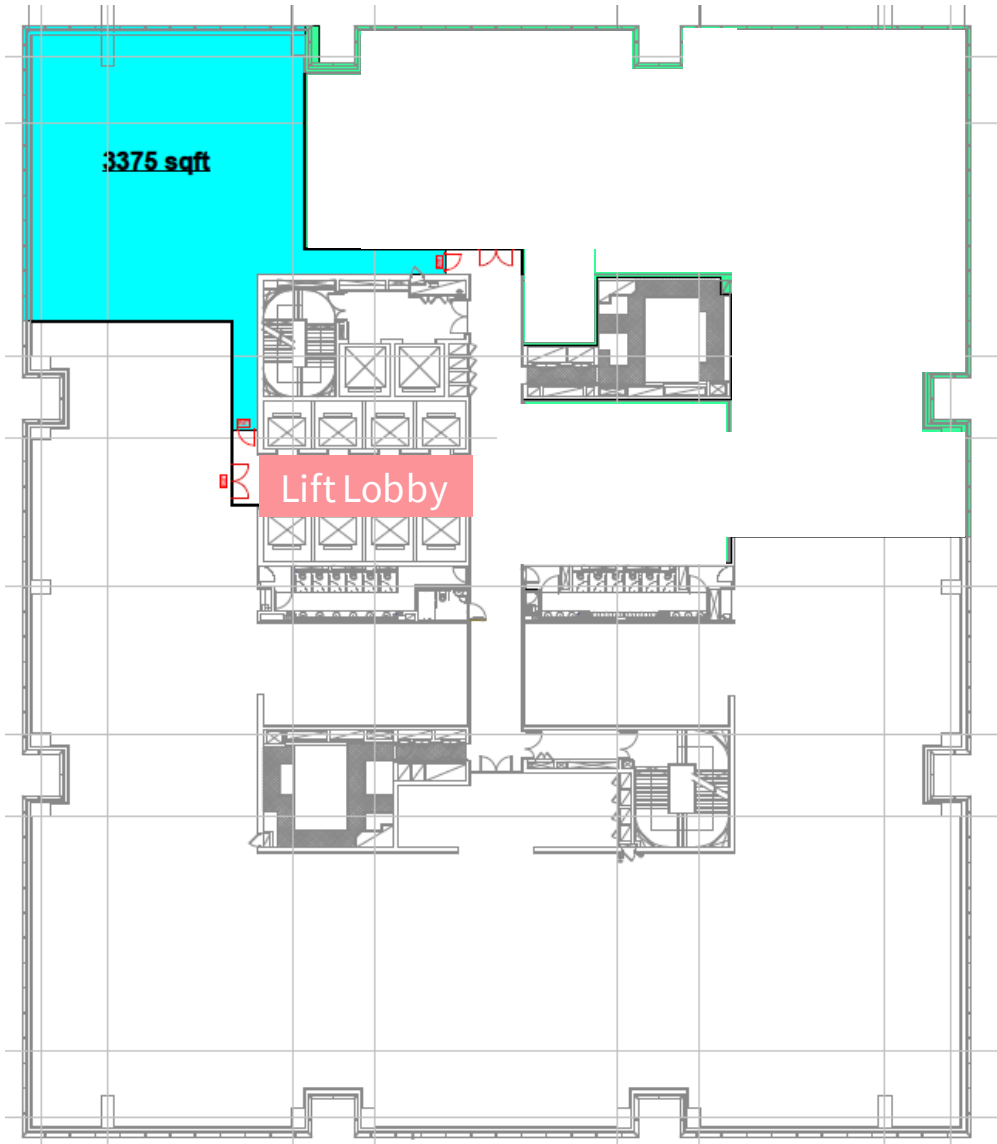


*Subject to Contract & Availability*



# Level 41-Part (c. 3,375 sf, sub-divisible)

Bare and Available from Mid-June 2024; Corner Unit, Sea & City View



*Subject to Contract & Availability*

# Get in touch



## Enos Yip

CEA Reg: R056838H  
Mobile: +65 9227 0496  
Email: [Enos.Yip@jll.com](mailto:Enos.Yip@jll.com)



## Larissa Lim

CEA Reg: R021970G  
Mobile: +65 9821 0393  
Email: [Larissa.Lim@jll.com](mailto:Larissa.Lim@jll.com)



[jll.com](https://www.jll.com)

© Copyright 2022 JLL All rights reserved. The information contained in this document is proprietary to JLL and shall be used solely for the purposes of evaluating this proposal. All such documentation and information remains the property of JLL and shall be kept confidential. Reproduction of any part of this document is authorized only to the extent necessary for its evaluation. It is not to be shown to any third party without the prior written authorization of JLL. All information contained herein is from sources deemed reliable; however, no representation or warranty is made as to the accuracy thereof.