

# ON WASHINGTON

WASHINGTON STREET HISTORIC DISTRICT

## 68 Washington Street, Norwalk, CT Prime Turnkey Restaurant

### OVERVIEW

#### SIZE

3,600 SF (Ground Floor)

4,620 SF (Basement)

#### NEIGHBORS

Mecha Noodle Bar, Salon Etre, Oishi, Washington Prime, Donovan's, Il Posto, Tablao, and more!

#### COMMENTS

Easy access to I-95 and 7 Connector, walk to SoNo Train Station, 5 Private and Municipal Parking Garages within walking distance. Over 20 new construction apartment buildings in South Norwalk!

#### CENSUS

91,194 people (6<sup>th</sup> largest city in CT)

The Washington Street Historic District is a highly preserved landmarked community at the convergence of new construction apartment buildings, hotels, a gorgeous waterfront, and a 24/7 eat, shop, and live culture.

Social Media: @onwashingtonst  
[www.onwashingtonst.com](http://www.onwashingtonst.com)





# 68 Washington Street | South Norwalk, CT





# 68 Washington Street | South Norwalk, CT





# Welcome to the Washington Street Historic District.





# Welcome to the Washington Street Historic District.





# Welcome to the Washington Street Historic District.





# Welcome to the Washington Street Historic District.









# 68 Washington Street | South Norwalk, CT



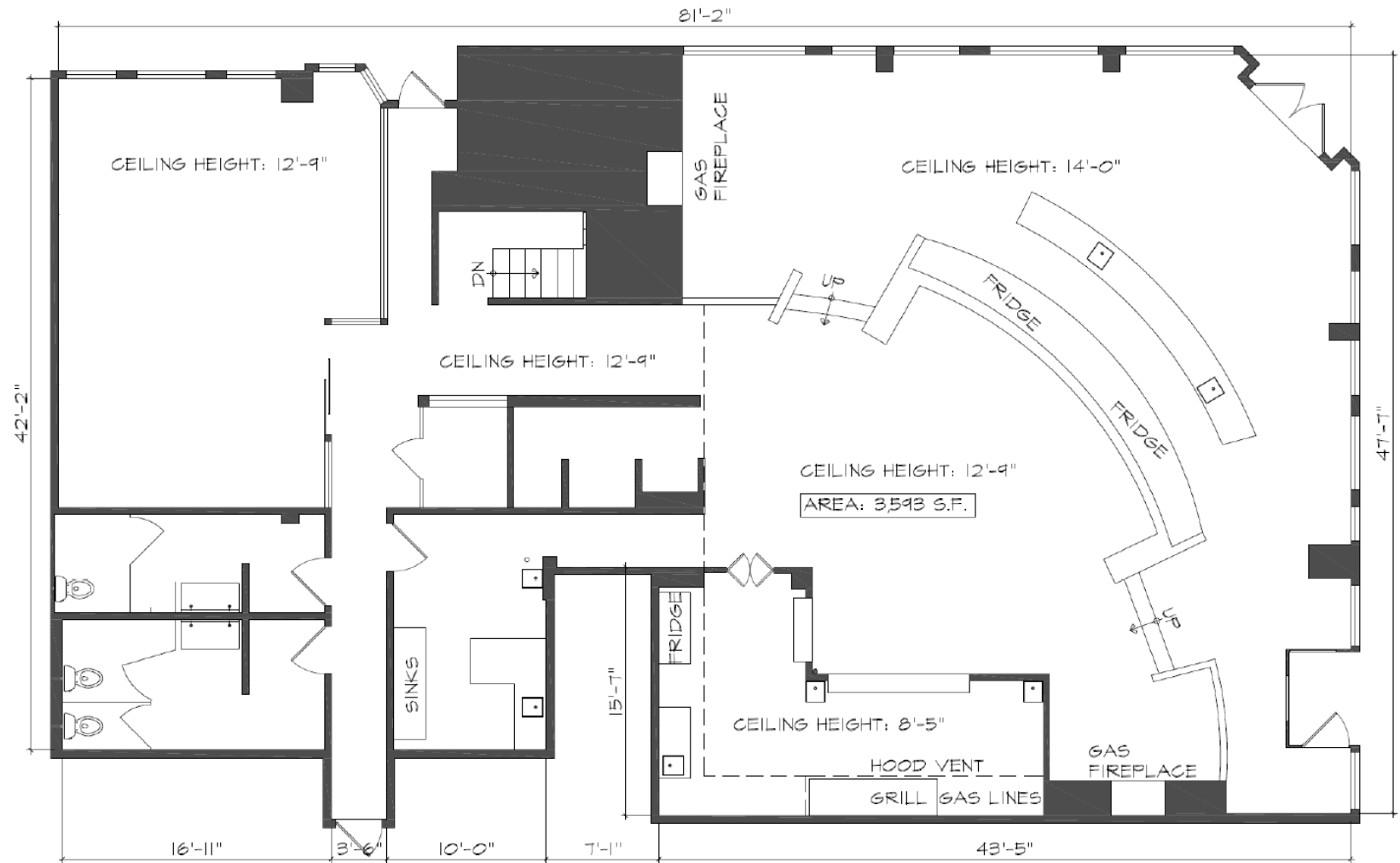


# 68 Washington Street | South Norwalk, CT





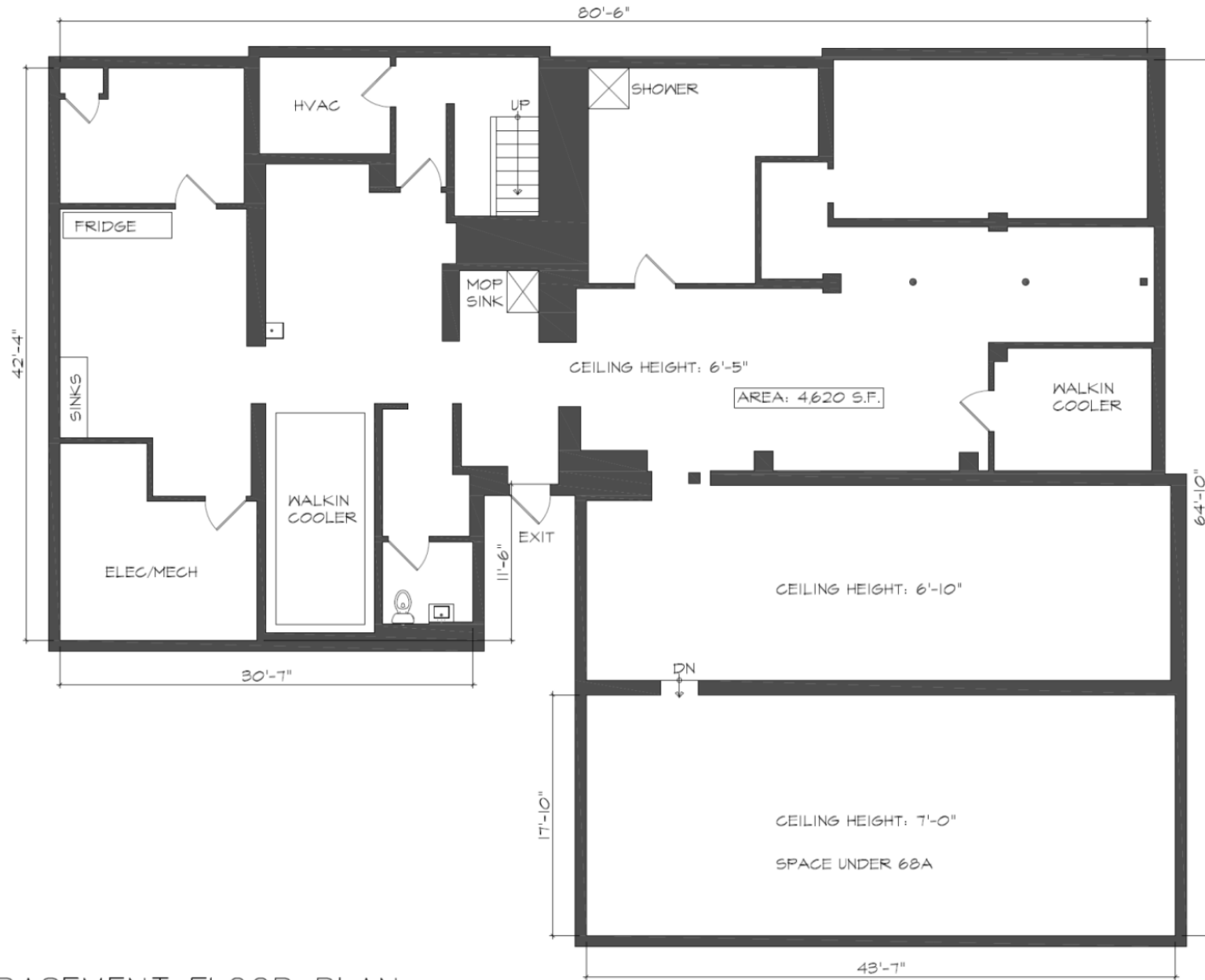
# 68 Washington Street | South Norwalk, CT



FIRST FLOOR PLAN



# 68 Washington Street | South Norwalk, CT



BASEMENT FLOOR PLAN