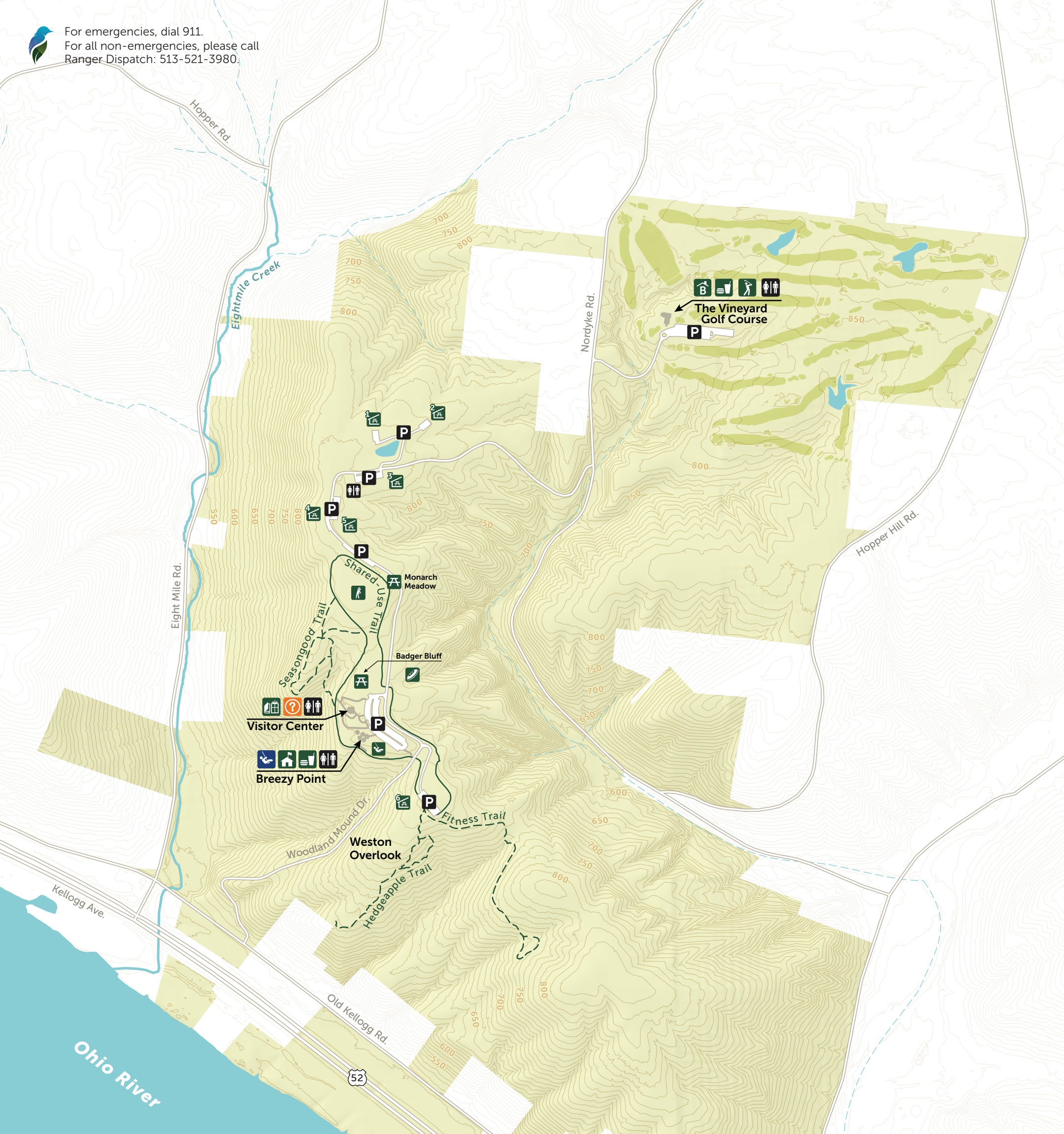




For emergencies, dial 911.  
 For all non-emergencies, please call  
 Ranger Dispatch: 513-521-3980.



# Woodland Mound

- |  |                          |               |                    |
|--|--------------------------|---------------|--------------------|
|  | Information              |               | Wet Playground     |
|  | Restrooms                |               | Fishing            |
|  | Parking                  |               | Boat Launch        |
|  | Ranger Station           |               | Reservable         |
|  | Nature's Niche Gift Shop | 1 Elderberry  |                    |
|  | Snack Bar                | 2 Fox Ridge   |                    |
|  | Sweetwine Banquet Center | 3 Juneberry   |                    |
|  | Picnic Shelter           | 4 Chipmunk    |                    |
|  | Picnic Area              | 5 Leatherleaf |                    |
|  | Playground               | 6 Weston      |                    |
|  | Disc Golf                |               | Paved Trail        |
|  | Golf                     |               | Paved Walking Path |
|  | Fitness Area             |               | Unpaved Trail      |

An Ohio state fishing license is required for all anglers. Ohio fishing regulations apply and are enforced.

1 inch = 1,100 feet

