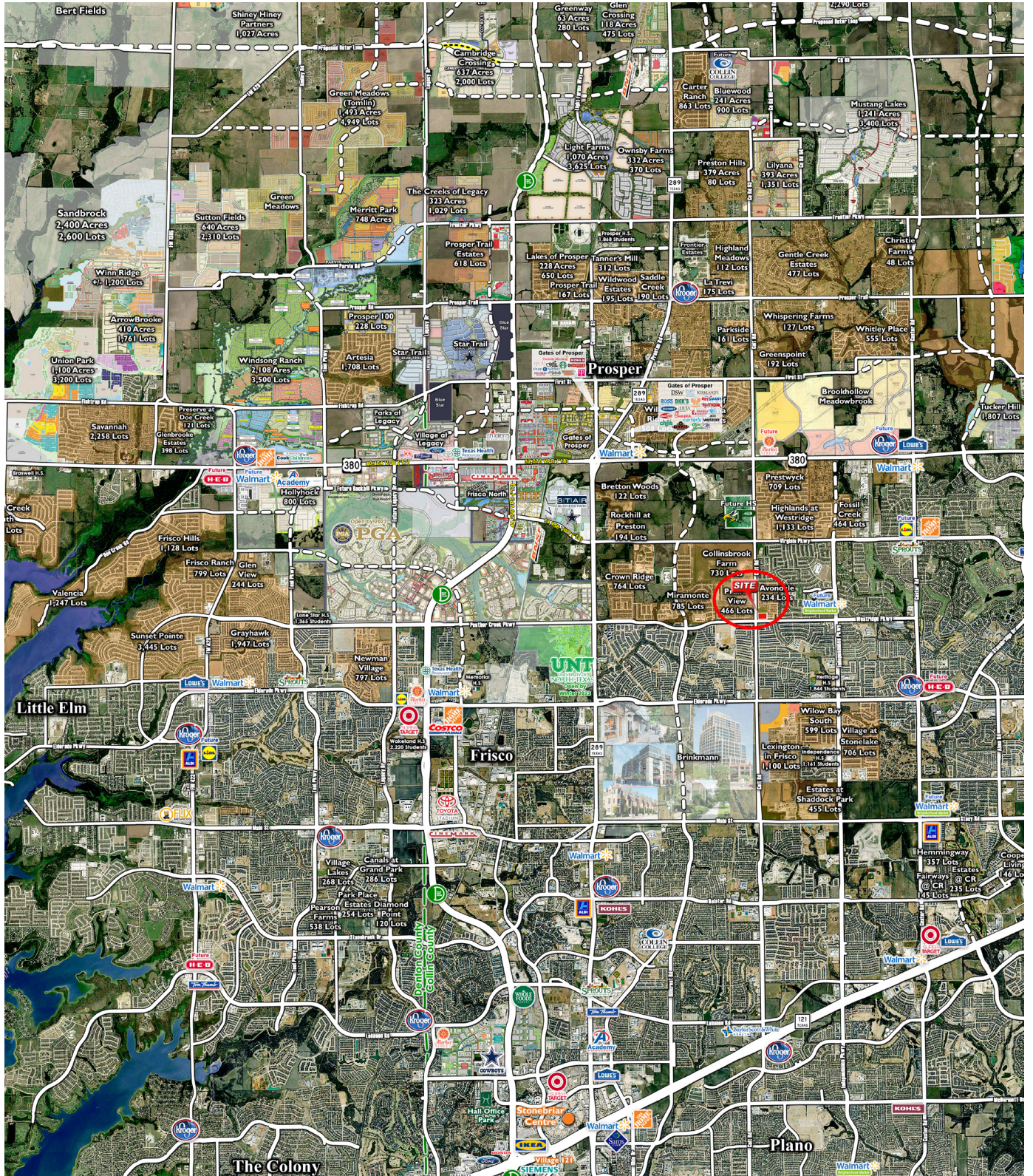


Northeast Corner of Coit Road & Westridge Boulevard

7.66 ACRES FRISCO, TX



Northeast Corner of Coit Road & Westridge Boulevard

7.66 Acres

Retail/Commercial

Pad Sites Available

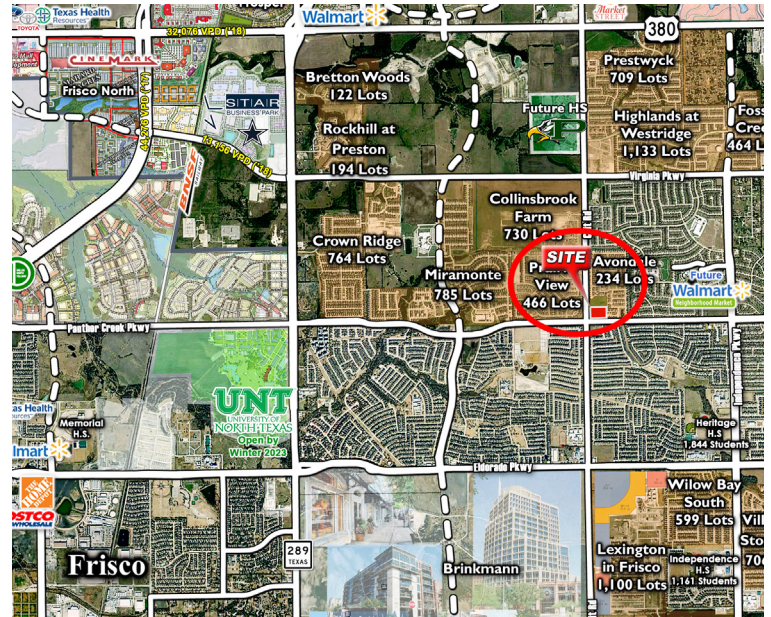
310+/- feet of frontage along Coit Road

747+/- feet of frontage along Westridge Boulevard

Utilities are available to the property

Frisco Independent School District

Collin County



Frisco Demographics

March 2019 Population: 185,435

Cities Annual Growth Rate: 6.1%

City's Average Annual Growth Rate since 2010: 5.2%

Estimated Population at Buildout: +/- 297,800

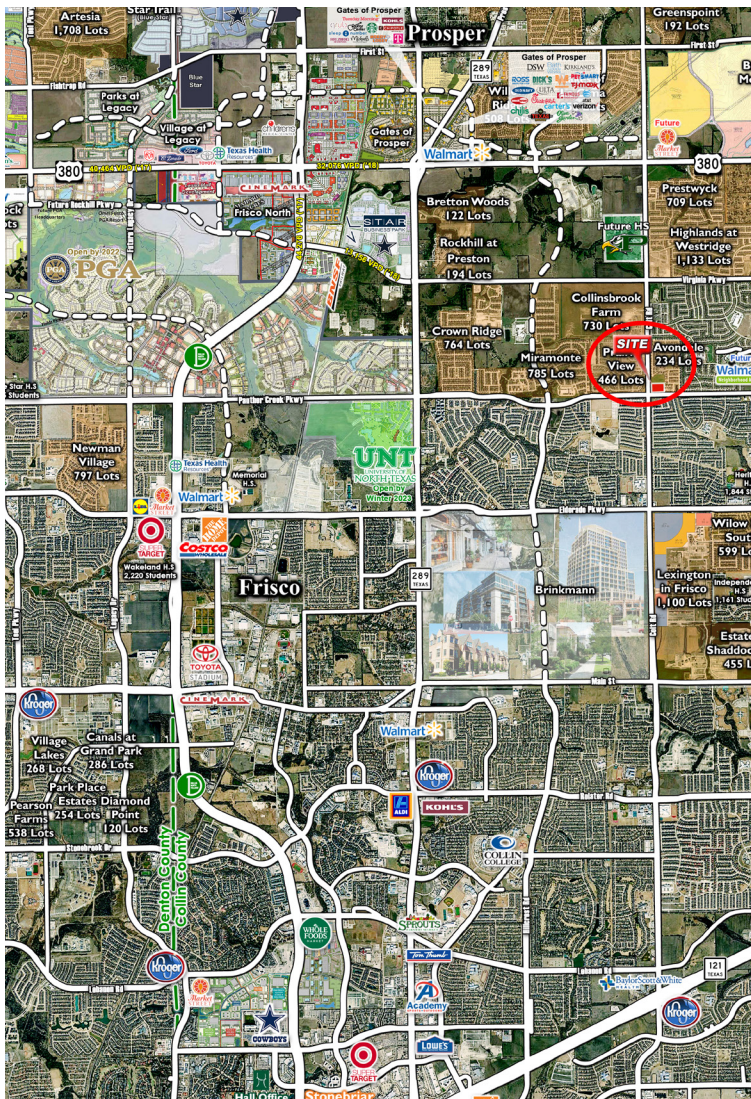
As of January 2019 the City of Frisco is 72% developed

Median Household Income: \$122,302

Adults with Advanced Degrees: 61.6%

Median Age: 36.6

Number of Households: 63,988



Robert Wyman
robert@rexrealestate.com

(972) 250-1263
rexrealestate.com

INFORMATION FURNISHED IS FROM SOURCES DEEMED TO BE RELIABLE, BUT IS NOT IN ANYWAY GUARANTEED BY US AND IS SUBJECT TO CHANGE IN PRICE, ERRORS AND OMISSIONS, PRIOR SALES OR WITHDRAWAL WITHOUT NOTICE.

