

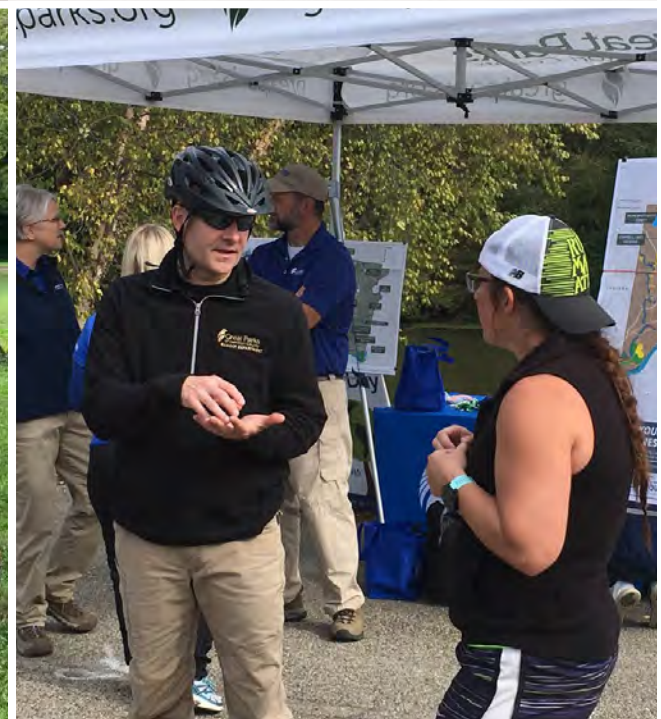


Great Parks

Park and Facility Master Plans

2021-2030 | HAMILTON COUNTY, OH

EXECUTIVE SUMMARY



ACKNOWLEDGMENTS

Great Parks would like to thank all of those who participated in the creation of the Park and Facility Master Plans through public workshops, community events, stakeholder interviews, and surveys. In addition, we would like to recognize and thank the following organizations and individuals for their support, direction, and guidance throughout the planning process.

Stakeholder Groups

Anderson Township
Audubon Society of Ohio
Bayley Adult Day Program
Cardinal Land Conservancy
Cincinnati Museum Center
Cincinnati Off-Road Alliance (CORA)
Cincinnati Parks
Cincinnati Preservation Society
Cincinnati Public Schools
Cincinnati Recreation Commission
Cincinnati Wildflower Preservation Society
City of Harrison
City of Sharonville
Cleveland Metroparks
Colerain Township
Crosby Township
Delhi Township
ELMNTL Fitness
Fernald Preserve
Five River MetroParks
Friends of White Water Shaker Village, Inc (FWWSV)
Girl Scouts of Western Ohio
Greater Cincinnati Disc Golf Association
Green Acres Canoe
Green Township
Groundwork Ohio River Valley
Hamilton County Soil & Water Conservation District
Imago Earth
MetroParks of Butler County
Metzcor LLC
Miami Township
Miami University
Mill Creek Alliance
Oak Hills Local School District
Ohio History Connection
Ohio Horseman's Council
OKI Cachers / OKIC GEOCACHING CLUB
Orienteering Cincinnati
Orienteering Club
Oxbow, Inc
Riverview-Delhi Hills Kiwanis Club

Seven Hills School
Southwest Local School District
Special Olympics Ohio
The Nature Conservancy
Three Rivers Local School District
Three Valley Conservation Trust
Tri-State Trails
University of Cincinnati
Village of Cleves
Village of North Bend
Western Wildlife Corridor
Whitewater Township
Winton Woods City School District
Yoga Leela

Board of Park Commissioners

William J. Burwinkel
Stacey DeGraffenreid
Caren Laverty
Joseph C. Seta
Marcus L. Thompson

Great Parks Project Team

Becky Osinski, Project Manager
Dave Bruce
Sean Creighton
Rachel Dearing
Ben Helmes
Todd Palmeter
Amy Roell
Kris Roselle
Jennifer Sivak
Jessica Spencer
Tim Zelek

Consultant Team

MKSK
BioHabitats
Burgess & Niple
Champlin
PROS Consulting

PARK AND FACILITY MASTER PLANS PROCESS OVERVIEW

Great Parks operates in a regional model to better serve all Hamilton County residents. The Park and Facility Master Plans process built on this approach by planning for each region of Great Parks individually. For each region, the planning team toured each park, met with staff and stakeholders, and conducted community outreach. Starting with the West Region in summer 2019 and working through the East Region and Central region through the fall of 2020, the planning team engaged with more than 2,800 community members throughout the process.

This engagement resulted in nearly 170 ideas for improvements to Great Parks. These improvements will enable Great Parks to fulfill the goals and priorities set forth in the 2019 Comprehensive Master Plan (see goals and priorities at right).

In the following pages, this Executive Summary report highlights more than a dozen improvement project ideas organized by the four major themes that emerged from an extensive community input process (see page 8).

COMPREHENSIVE MASTER PLAN GOALS

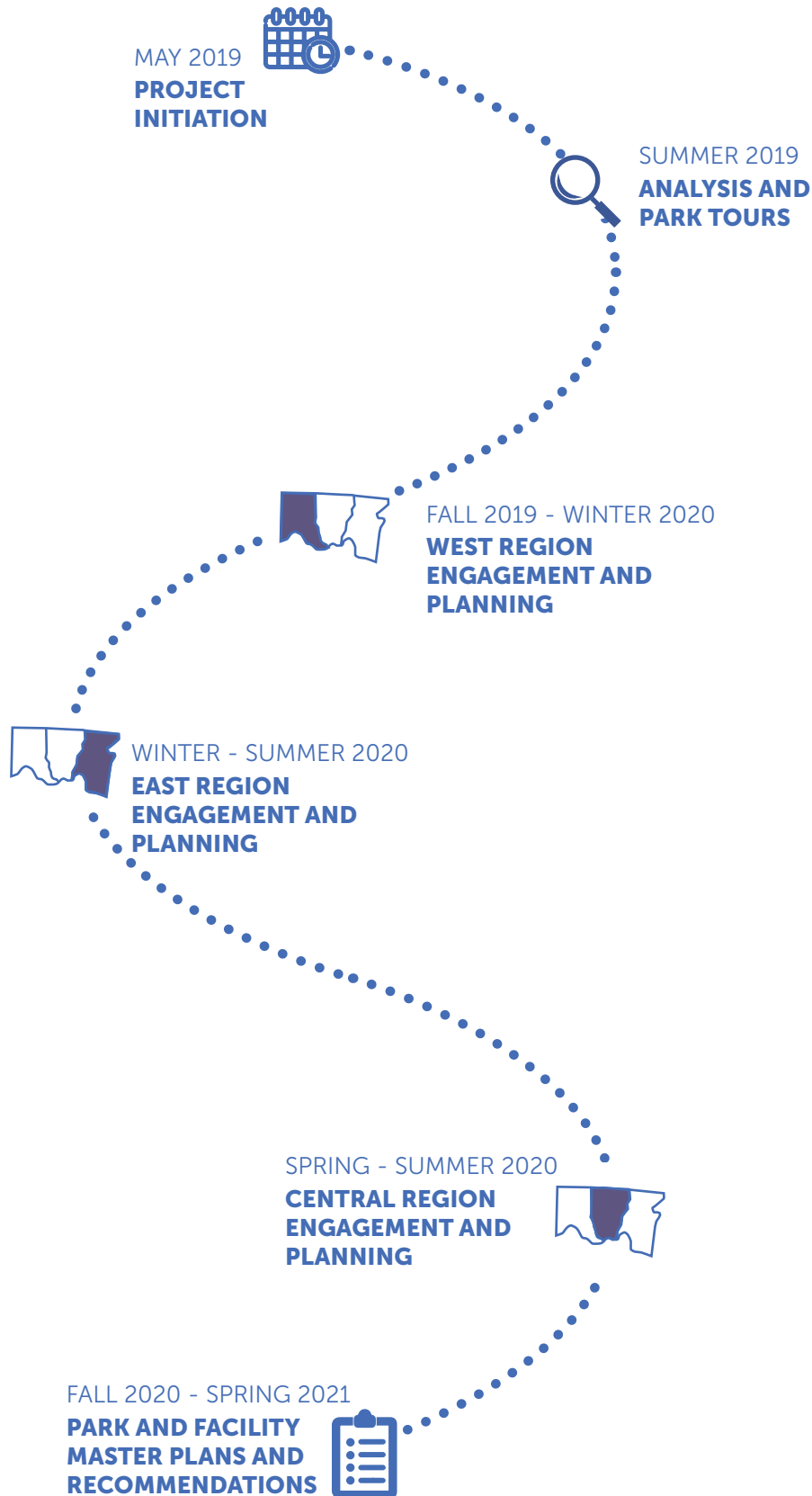
1	BE A RECOGNIZED LEADER IN CONSERVATION
2	PROVIDE INNOVATIVE PROGRAMMING AS A GATEWAY TO NATURE EXPLORATION
3	CREATE OUTSTANDING EXPERIENCES
4	ADVANCE FISCAL HEALTH
5	OPERATE WITH HIGH STANDARDS OF EXCELLENCE

COMPREHENSIVE MASTER PLAN PRIORITIES

1	BUILD MORE TRAILS
2	ADD PROGRAMMING AND EVENTS FOR DIVERSE AUDIENCES
3	PROVIDE ACCESS TO CONSERVATION AREAS
4	ESTABLISH A DEFINED BLUEWAY SYSTEM
5	FOCUS ON PARTNERSHIPS
6	BUILD ECOLOGICAL RESILIENCY AND SUSTAINABILITY
7	EXPAND ACCESS FOR ALL USERS
8	PLAN FOR THE FUTURE OF EVERY PARK

PROCESS OVERVIEW

COMMUNITY INPUT SUMMARY



More than **2,800** community members were engaged in the planning process

40+ In-Person Events over 18 Months

4 Online Surveys

3 Virtual Public Meetings

15 Stakeholder Input Sessions

6 Staff Input Sessions

Site Tours of Every Park

Signage and Advertisements within and outside the Parks

PUBLIC INPUT & TAKEAWAYS

West Region

Highest desire for future investment in **camping, mountain biking, and water play**

Desire for a **splash pad** or water play in this part of the county

Request for **more kayak put-in locations**

Request for more **interpretative spaces, signage, and programs** to inform about the natural areas of the parks

Local organizations (**mountain biking, and disc golf**) offering to help in facility improvements and creation

Central Region

Want to see **connections** to other parks and regional trail systems

Changes and **improvements to harbors**

Highest desire for future investment in **nature observation and educational programs**

Strong interest in **adult education for outdoor activities**

Dog park desired in this part of the county

East Region

Request for upgraded **play features** with wider age appeal

Improve the current **disc golf course facilities**

Desire for future investment in **canoe/kayak facilities**

Need for enhancing the **birding and nature observation** opportunities

Request for **more preservation/conservation areas** to interact with and learn from

PARK AND FACILITY MASTER PLANS SUMMARY OF IMPROVEMENTS

.....

ADD MORE TRAILS & ADVENTURE

50

Miles of
New Trails

10+

Miles of New
Regional Trails

25

Mile Blueway
Trail System

REFRESH HARBORS & EXPERIENCES

3

Refreshed
Harbors

5

Improved Play
Experiences

3

New Camping
Experiences

4

Improved Disc
Golf Courses

BUILD NEW NATURE, EDUCATION, & EVENT CENTERS

2 New Nature &
Education Centers at
Shawnee Lookout and
Woodland Mound

1 New Event &
Education Center at
Glenwood Gardens

1 New Outdoor
Education Experience
at Shaker Trace
Nursery

IMPLEMENT CONSERVATION PROJECTS

5

Preserved
Mature
Woodlands

150

Acre
Restoration
of Shawnee
Lookout Golf
Course

13.5

Acre
Restored Forest
and Riparian Area
in the Little Miami
River Corridor

10+

Acre
Restored Wetland
and Stream
at Glenwood
Gardens

7

Green
Stormwater
Parking Lot
Retrofits

PARK AND FACILITY MASTER PLANS THEMES

The input and feedback received from the community and stakeholders during the Park and Facility Master Plans process can be organized into four main themes that reflect the community’s vision for the future of Great Parks. These overarching themes are expressed in specific improvements and recommendations that will enhance the current park user’s experience and will attract new visitors to the parks. The themes focus on expanding on the successful elements already present in the parks, enhancing and improving destinations and unique experiences, creating new spaces to educate and gather, and furthering Great Parks’ goal to be a leader in conservation and environmental stewardship. The four themes are:

ADD MORE TRAILS & ADVENTURE

Hiking/Walking Trails, Mountain Biking, Regional Trails, Blueway Trails

REFRESH HARBORS & EXPERIENCES

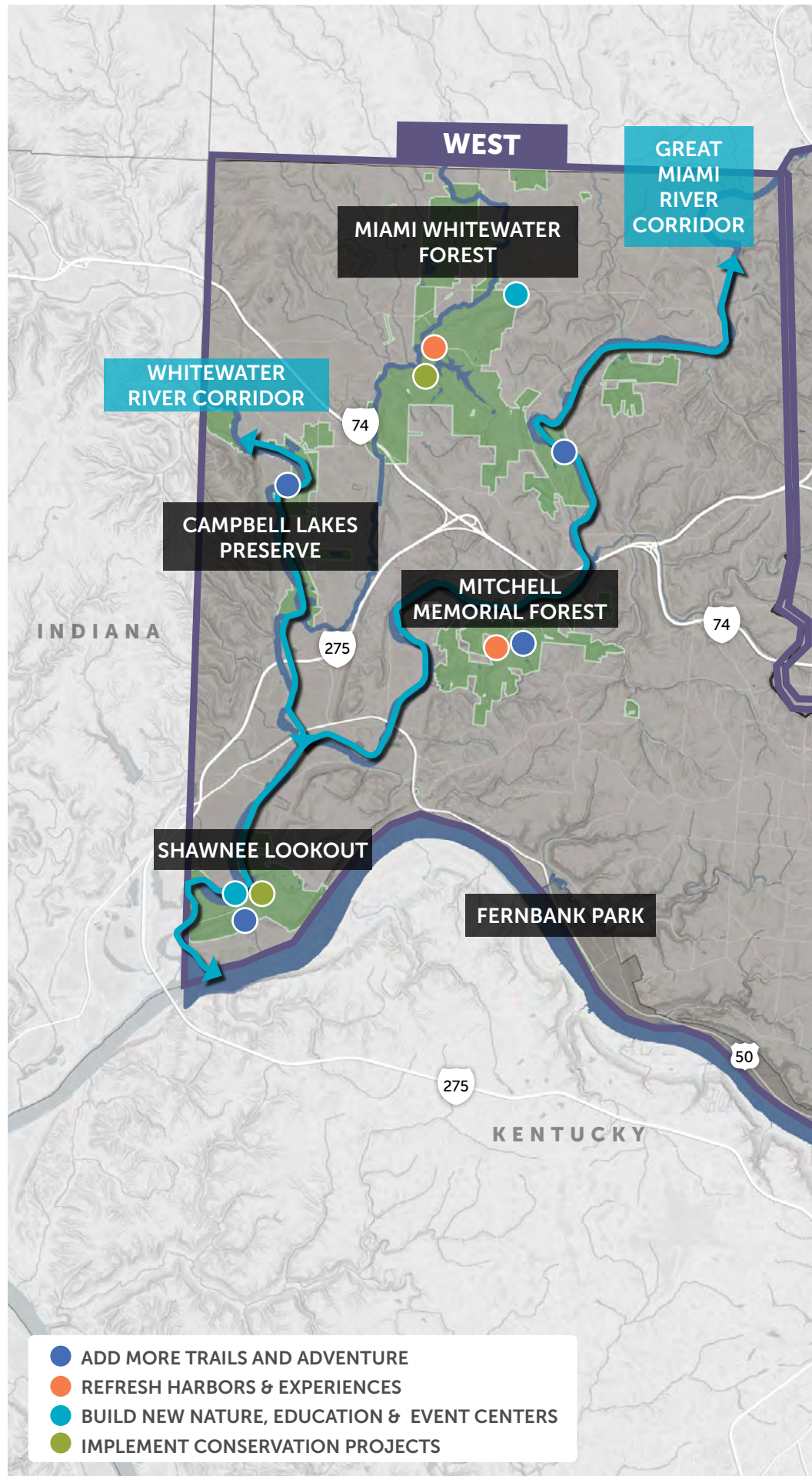
Harbors, Playgrounds, Camping, Disc Golf

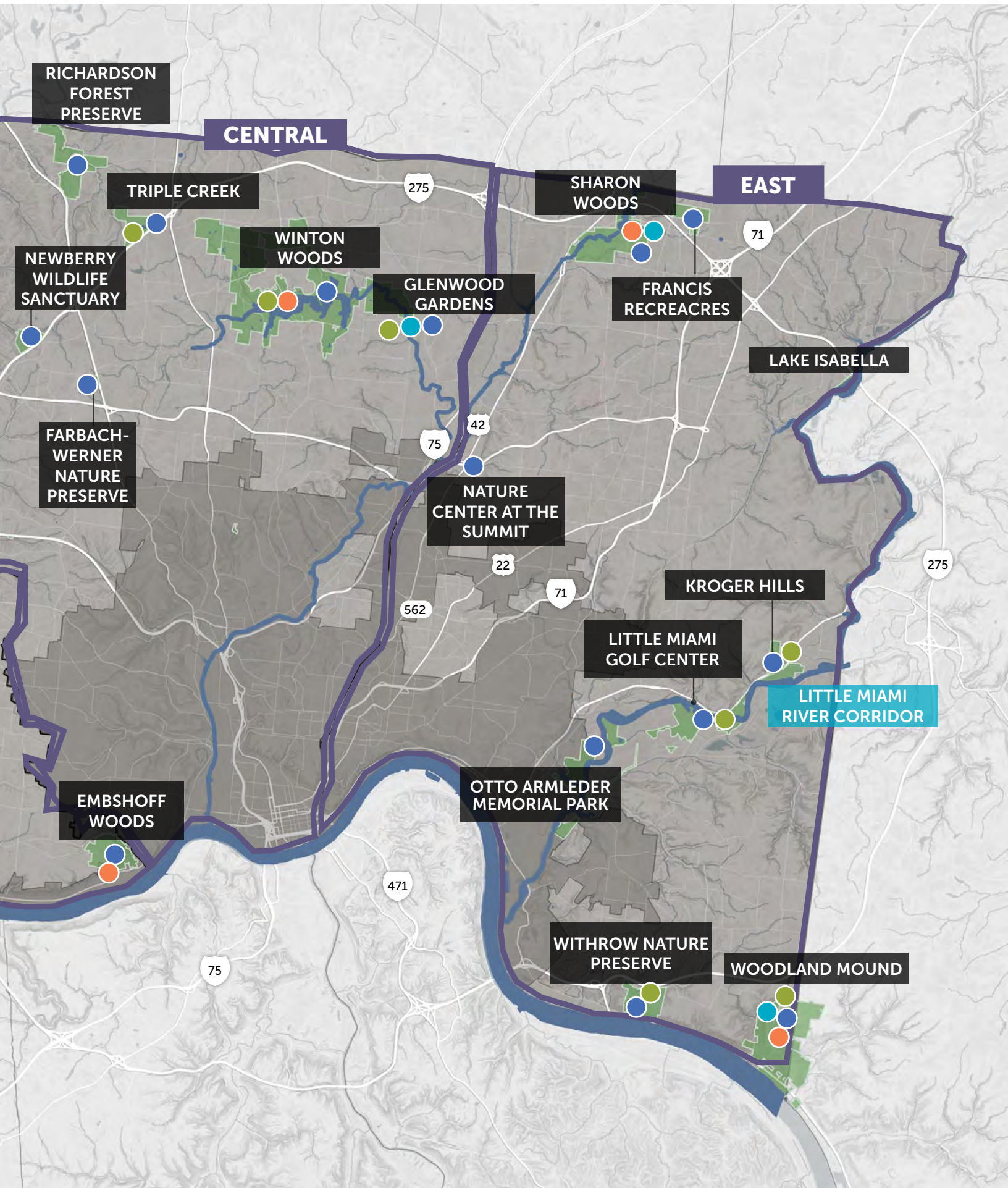
BUILD NEW NATURE, EDUCATION, & EVENT CENTERS

Education and Event Centers in Each Region

IMPLEMENT CONSERVATION PROJECTS

Mature Forest Management, Stream and Wetland Restoration, Golf Course Restoration, Stormwater Management





ADD MORE TRAILS & ADVENTURE

50+ MILES OF NEW TRAILS

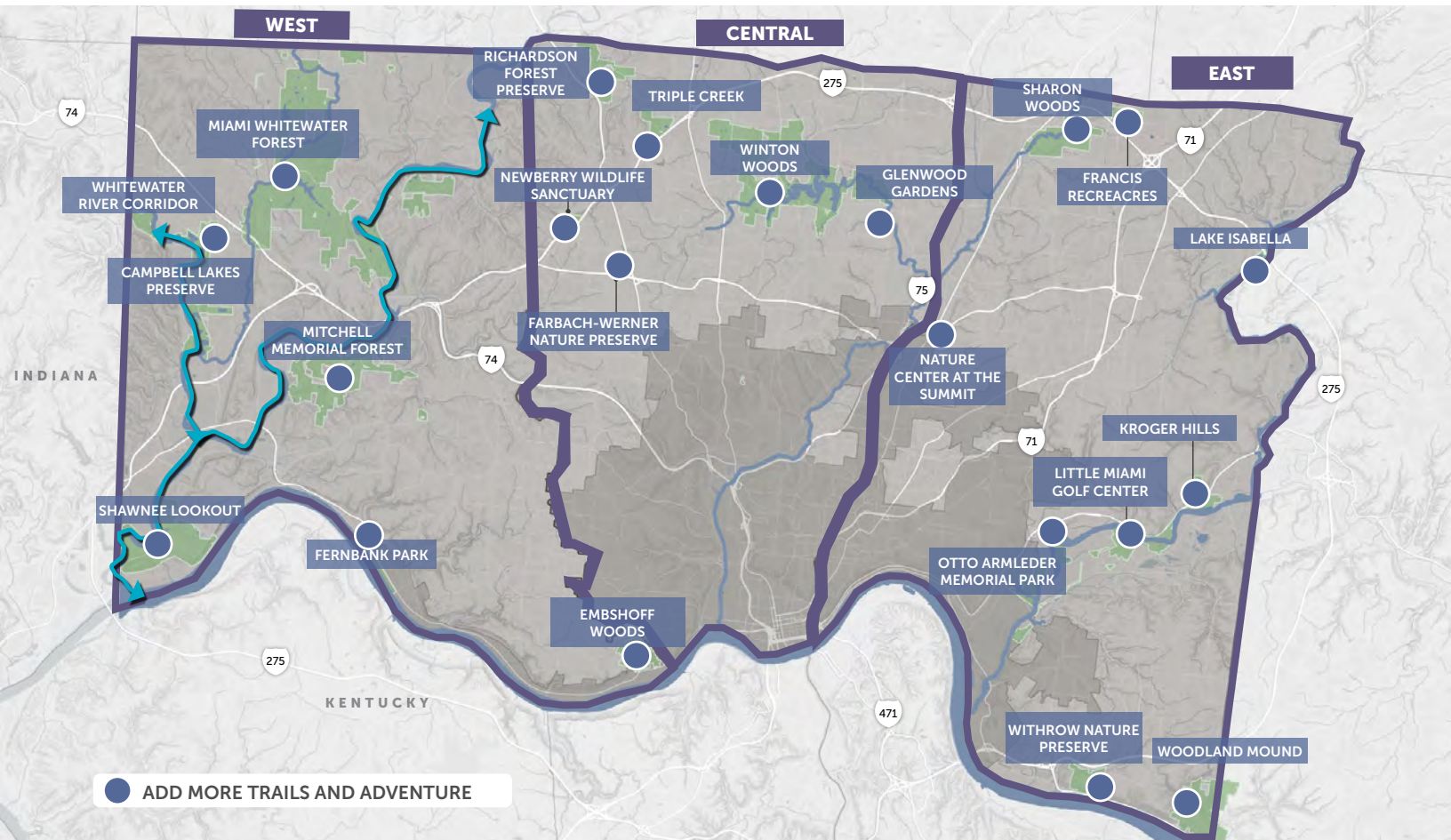
10 MILES OF NEW REGIONAL TRAILS

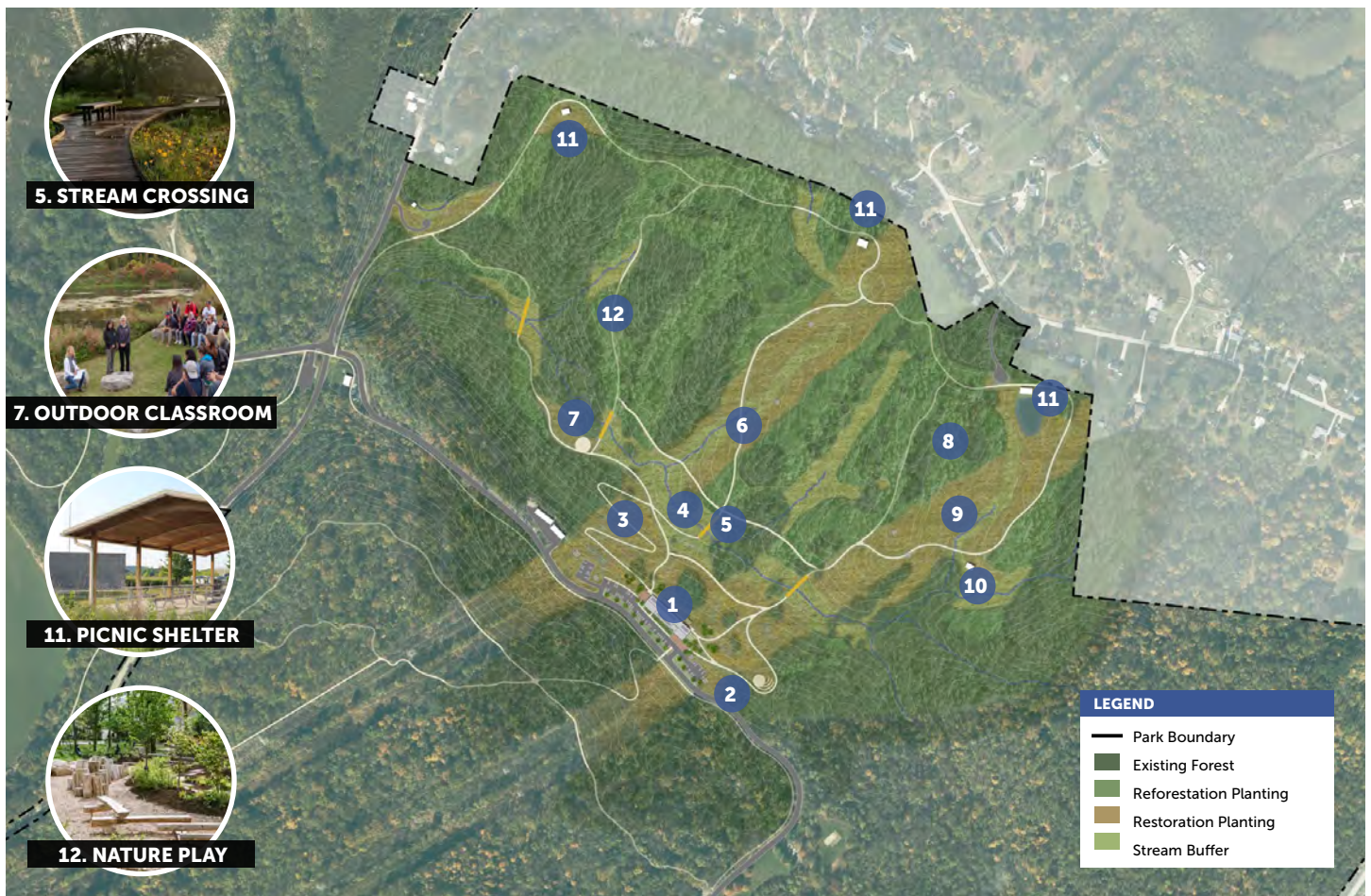
25 MILE BLUEWAY TRAIL SYSTEM

Dating back to the 2019 Comprehensive Plan, public input has been clear that there is a desire for more trails of all kinds. The Park and Facility Master Plans will expand existing trails and create new trails within every park. It also connects parks and communities to one another through regional trails, and creates unique regional experiences with blueway trails on Hamilton County's river and stream corridors.

- The trail improvements in this plan create more than **50 miles of new trails** within Great Parks.
- New trails will include a mixture of natural surface and paved trails. These systems will be tied together at parks like Shawnee Lookout and Richardson Forest Preserve via trail hubs.

- This plan also outlines the regional trail connections that Great Parks will focus its efforts on implementing over the coming decade, totaling more than **10 miles of connections between parks, neighborhoods, and community destinations.**
- Additionally, this plan identifies improved access points and a formal strategy for establishing a **25-mile blueway trail system** along the Great Miami River and Whitewater River corridors within western Hamilton County.





The re-use of the former golf course at Shawnee Lookout represents a **150 acre ecological restoration opportunity** including daylighting the stream corridor and reforestation and plant restoration strategies, to fill in the former fairways. Additional proposed improvements include:

- Utilizing some of the existing cart paths to create **2.9 miles of new trails in this part of the park.**
- Constructing a **new Nature and Education Center** to serve as a center of activity and **trail hub** (see page 21).
- Connecting to the **canoe and kayak launch** on the Great Miami River and existing natural surface trails in other portions of the park.
- Establishing new overlooks on some of the existing trails making this park a regional attraction for hiking experiences. In total, **the park will add 8.4 miles of new trails.**
- Enabling new educational programs with an **amphitheater and outdoor classroom.**
- Providing new trail experiences with multiple **picnic shelters, a bird blind, a nature playground, and multiple stream crossing points.**
- Ensuring accessibility through an **accessible path system** that allows for everyone to enjoy this new part of the park.

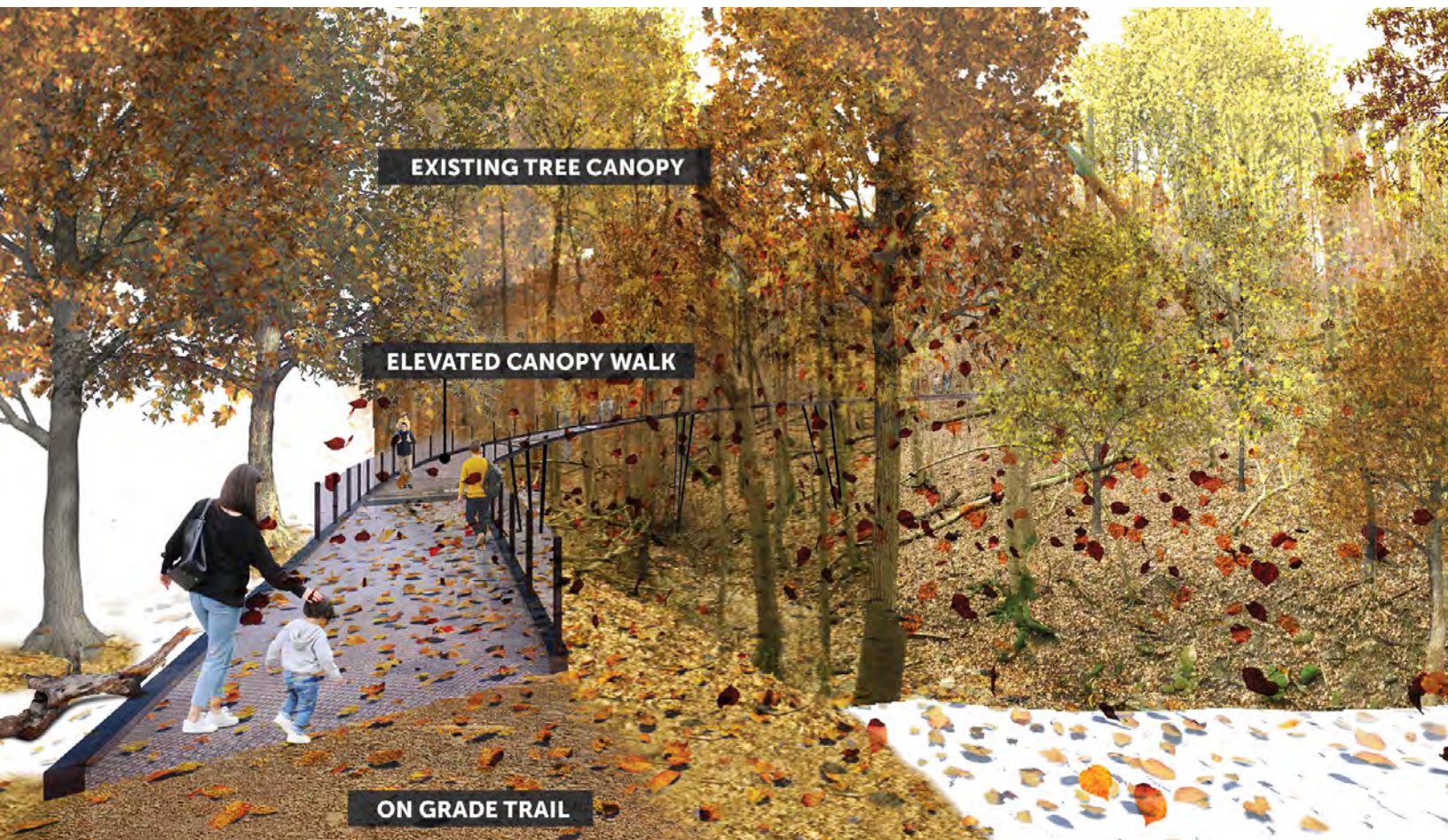
CONNECTING TRAILS AND RESTORING SHAWNEE LOOKOUT GOLF COURSE

- 1 Nature and Education Center
- 2 Amphitheater
- 3 Accessible Trail Path
- 4 Stream Restoration & Daylighting
- 5 Stream Crossing
- 6 Trail Path Network
- 7 Outdoor Classroom
- 8 Reforestation Planting Strategy
- 9 Restoration Planting Strategy
- 10 Bird Blind
- 11 Picnic Shelter
- 12 Nature Play

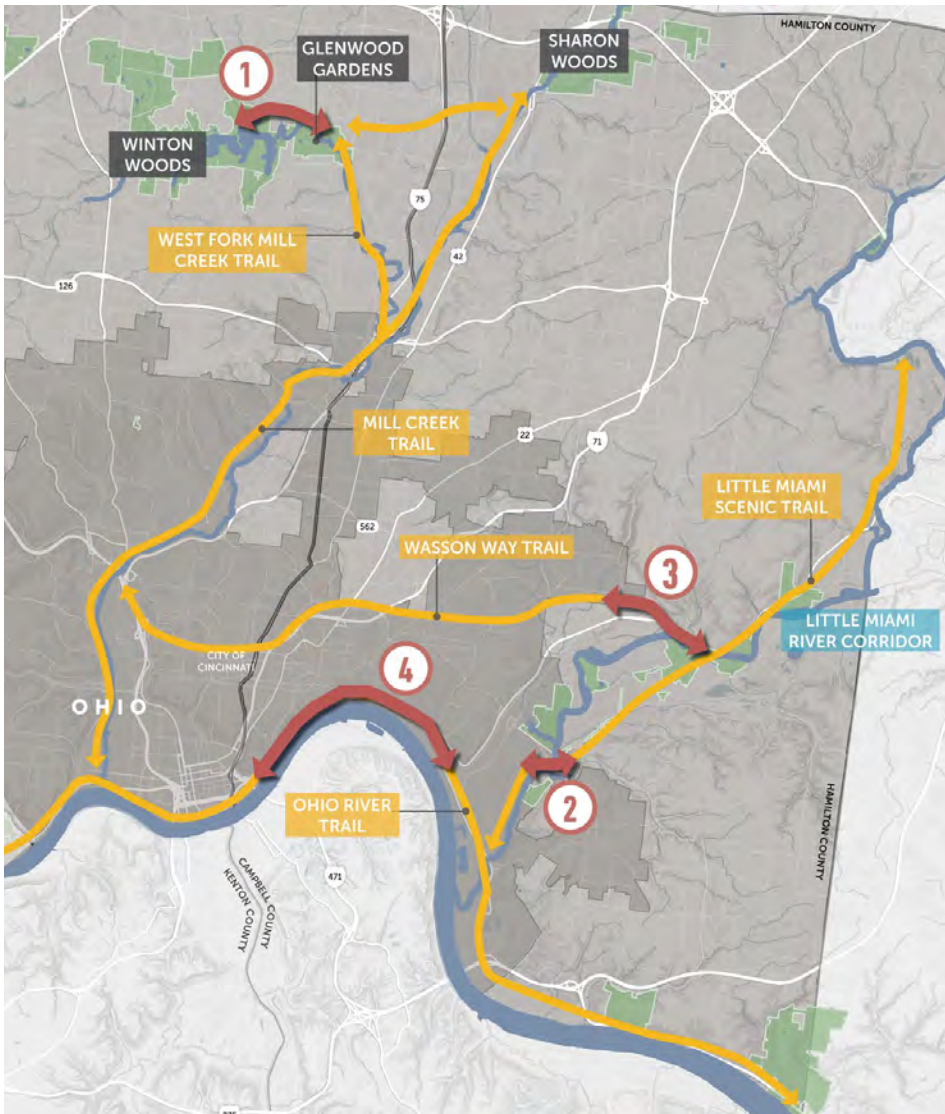
ADDING NEW NEIGHBORHOOD CONNECTIONS AND CANOPY WALK TRAIL AT EMBSHOFF WOODS

Embshoff Woods is tucked away on the border of the City of Cincinnati and Delhi Township. The plan creates **2 miles of new trails** within this park that include:

- **Creating a canopy walk trail and overlook** that takes advantage of the unique terrain of the park and provides a new attraction and educational opportunity for visitors.
- Connecting the park to the surrounding neighborhoods to improve walk-in access for existing residents.



CREATING NEW REGIONAL TRAIL LINKAGES



Great Parks of Hamilton County has long been a partner and champion of developing regional trail systems and connections between parks, communities, and destinations. These paved, off-road trails expand safe, accessible and enjoyable opportunities for people to reach their parks by walking and biking. Great Parks' focus on regional trails extends throughout the entire tristate region, including trails along the Mill Creek, Great Miami, Little Miami, and Ohio Rivers. In this plan, four regional trail segments have been identified as priorities for Great Parks:

- ①. The Glenwood Gardens to Winton Woods Trail will span **3.6 miles** and connect two Great Parks that are adjacent to one another.
- ②. The Beechmont Bridge Connection is **currently under construction**. This trail will link the Little Miami Scenic Trail to the Otto Armleder, Lunken Loop, and Ohio River Trails.
- ③. The **1.6-mile Columbia Connector Trail** will ultimately tie the Little Miami Scenic Trail to other segments of the 34-mile CROWN regional trail loop, including the Murray Path and Wasson Way.
- ④. The Ohio River Trail – The Oasis Corridor is another regional trail that is currently in the planning stages. This trail connection **from the Lunken Loop Trail to downtown Cincinnati** is a critical segment of the Ohio River Trail, which will eventually stretch from one end of the county to the other.

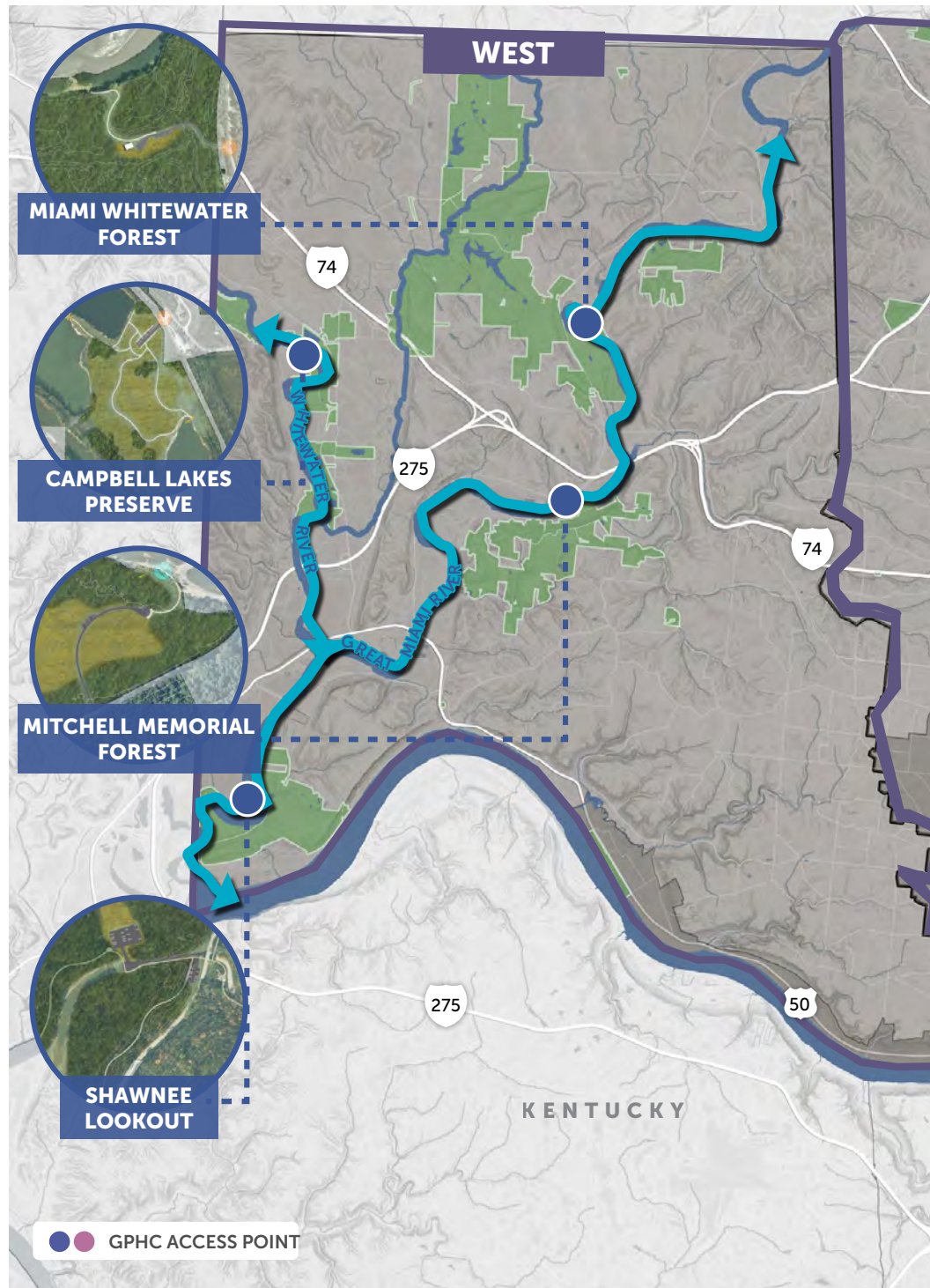


EXPANDING AND ENHANCING BLUEWAY TRAIL SYSTEMS

While Great Parks continues to plan for and make improvements to access points on the Little Miami Blueway Trail and to study the potential for access on the Mill Creek Blueway, the Park and Facility Master Plans focused on creating a **new Blueway Trail Network on the Great Miami and Whitewater Rivers**. Access along these two river corridors on the west side of Hamilton County will be significantly improved, with **four new put-ins and take-outs** that offer a variety of different trip lengths and river experiences.

The future four access points are located at **Miami Whitewater Forest, Mitchell Memorial Forest, Campbell Lakes Preserve, and Shawnee Lookout**. With the four access points, comes opportunities for different blueway experiences, including **mobile water school programming of educational and water safety classes and day trips** along the corridor.

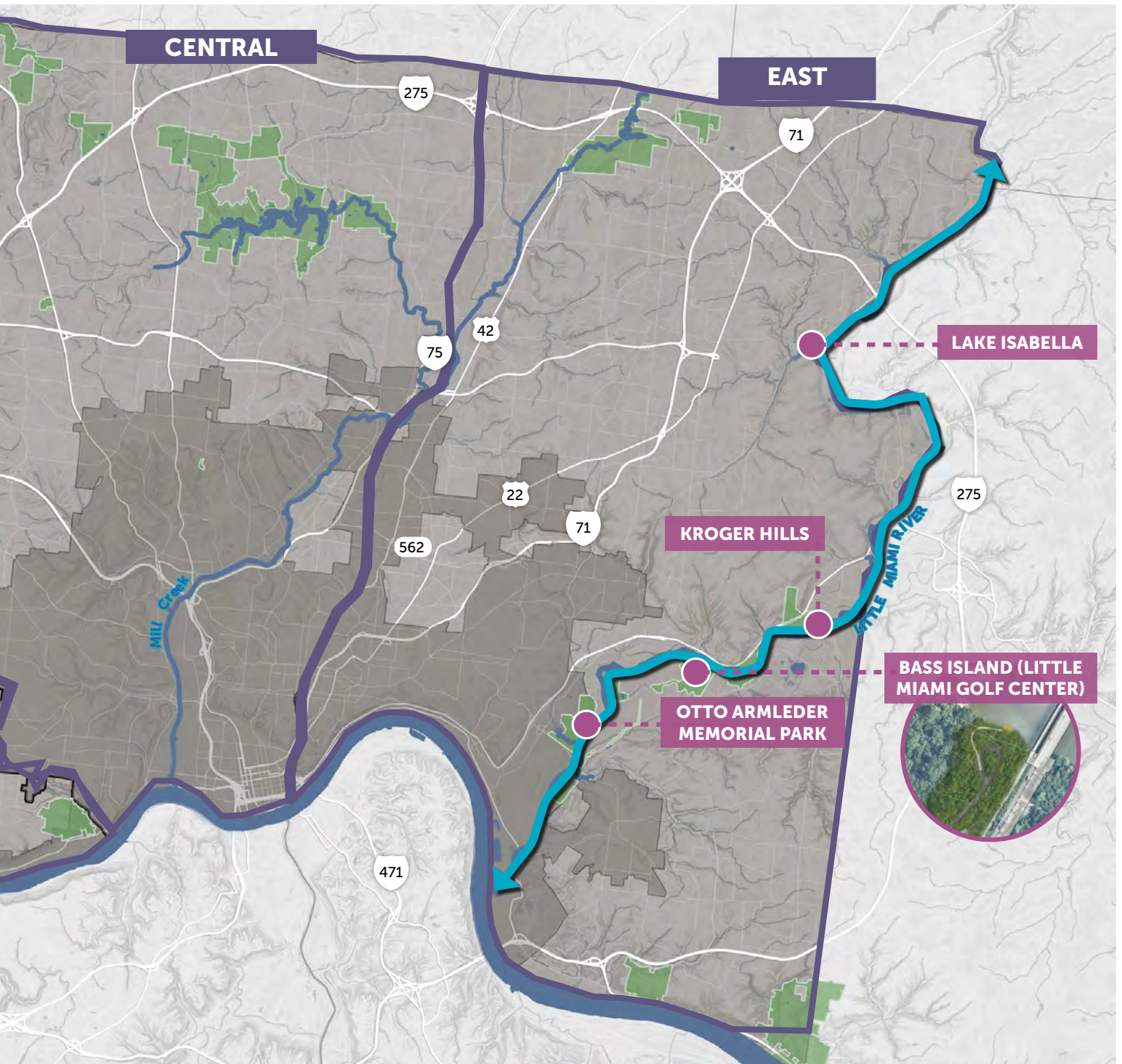
The four access points allow paddlers to **define and create their own unique experience** with paddle trip lengths ranging from a few hours to all day. Users can also combine this experience with hiking, bike rides, and visiting other amenities within and near the parks.



GREAT MIAMI AND WHITEWATER RIVER CORRIDORS

PUT IN SITE	TAKE OUT SITE	DISTANCE
CAMPBELL LAKES	GREEN ACRES (NON-GPHC)	4.4 MILES
	SHAWNEE LOOKOUT	9.0 MILES
MIAMI WHITEWATER FOREST	MITCHELL MEMORIAL FOREST	3.6 MILES
	SHAWNEE LOOKOUT	13.6 MILES
MITCHELL MEMORIAL FOREST	SHAWNEE LOOKOUT	10.0 MILES
HERITAGE PARK (NON-GPHC)	DRAVO PARK (NON-GPHC)	4.0 MILES
	MIAMI WHITEWATER FOREST	6.0 MILES





LITTLE MIAMI RIVER CORRIDOR

PUT IN SITE	TAKE OUT SITE	DISTANCE
LAKE ISABELLA	KROGER HILLS	10.1 MILES
KROGER HILLS	BASS ISLAND	2.5 MILES
BASS ISLAND	OTTO ARMLEDER MEMORIAL PARK	4.1 MILES
OTTO ARMLEDER MEMORIAL PARK	OHIO RIVER	3.9 MILES



REFRESH HARBORS & EXPERIENCES

3 REVITALIZED HARBORS

5 IMPROVED PLAY EXPERIENCES

3 NEW CAMPING EXPERIENCES

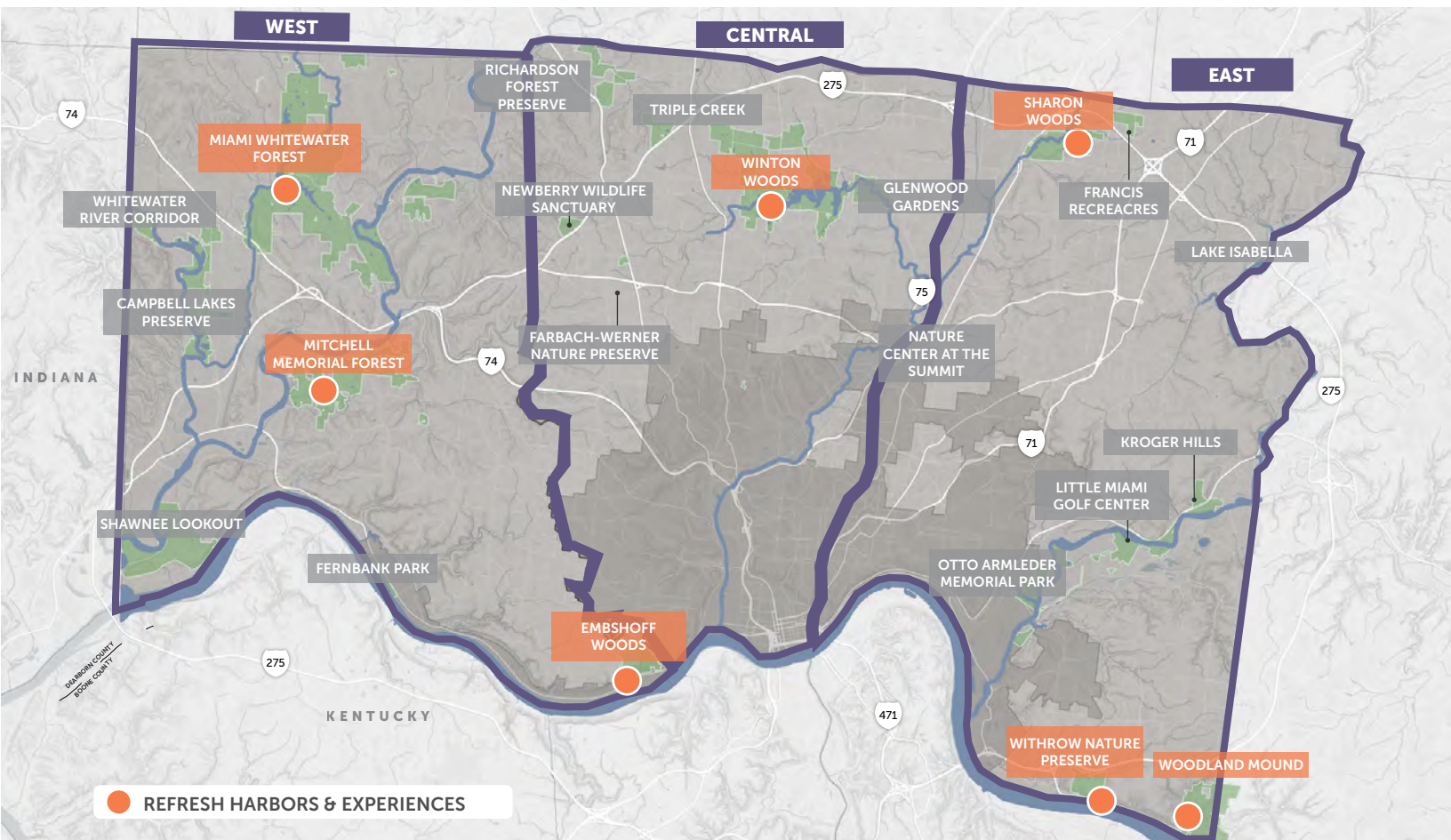
4 IMPROVED DISC GOLF COURSES

The Park and Facility Master Plans also address improvements to the signature experiences within Great Parks. These include the harbors, playgrounds, campgrounds, and disc golf courses. With these investments, Great Parks will improve its existing facilities and create new attractions. The harbors are popular destinations and the combination of activities present at each makes them an incredible asset to the community.

There is **one harbor in each region**, each with its own distinct needs and opportunities. Many specific areas of these harbors are out-of-date, could be better integrated into the surrounding park, or do not necessarily reflect the desires of the park users.

In addition to harbor improvements this plan focuses on:

- Defining the future of play experiences in **five parks**.
- Expanding camping opportunities with **three new camping experiences**.
- Improving **four disc golf courses** throughout Great Parks.





IMPROVING PLAY EXPERIENCES

Most of the larger, destination playgrounds at Great Parks are outdated and nearing the end of their life cycle. The need to update and upgrade these play experiences was a common community sentiment. New play experiences will:

- Integrate water with other play experiences, **eliminating the need for an additional fee.**
- Focus on **natural materials and experiences** that reflect the unique character and landscape of each park's setting and become regional destinations.
- **Meet the needs of all ages and abilities** by providing unique play features that enable a wide variety of types of play.

MIAMI WHITEWATER FOREST HARBOR

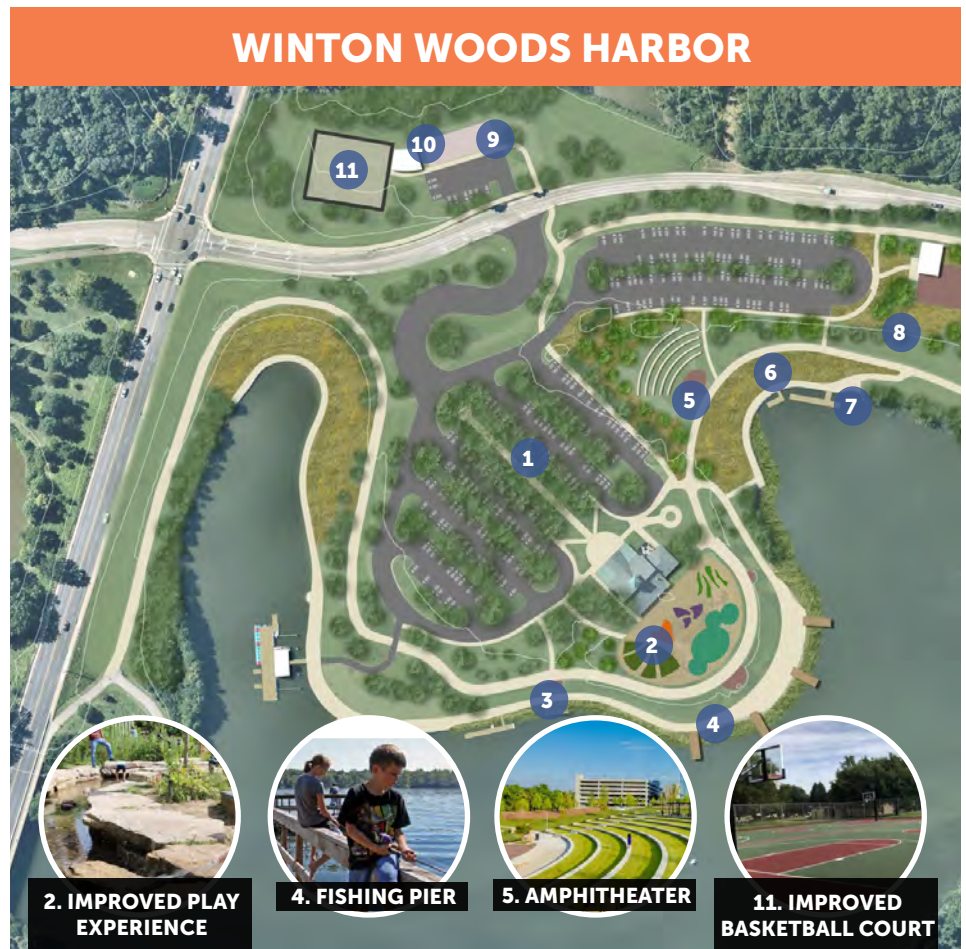


- 1 Bike Rental
- 2 Pedestrian Promenade
- 3 Improved Entry Plaza
- 4 Open "Breezeway" Retrofit
- 5 Covered Pavilion
- 6 Event Lawn
- 7 Stage/Plaza
- 8 Boat House
- 9 Nature and Wet Playgrounds
- 10 Vegetated Lake Edge Improvements
- 11 Connection to Campground

The improvements to **Miami Whitewater Forest harbor** focus on revitalizing the play experience (9), improving visual access to the lake by opening up the building breezeway (4), creating a covered lake view pavilion (5), formalizing the event lawn (6) and better connecting to nearby features through trails and relocating the bike rental facility (1, 11).

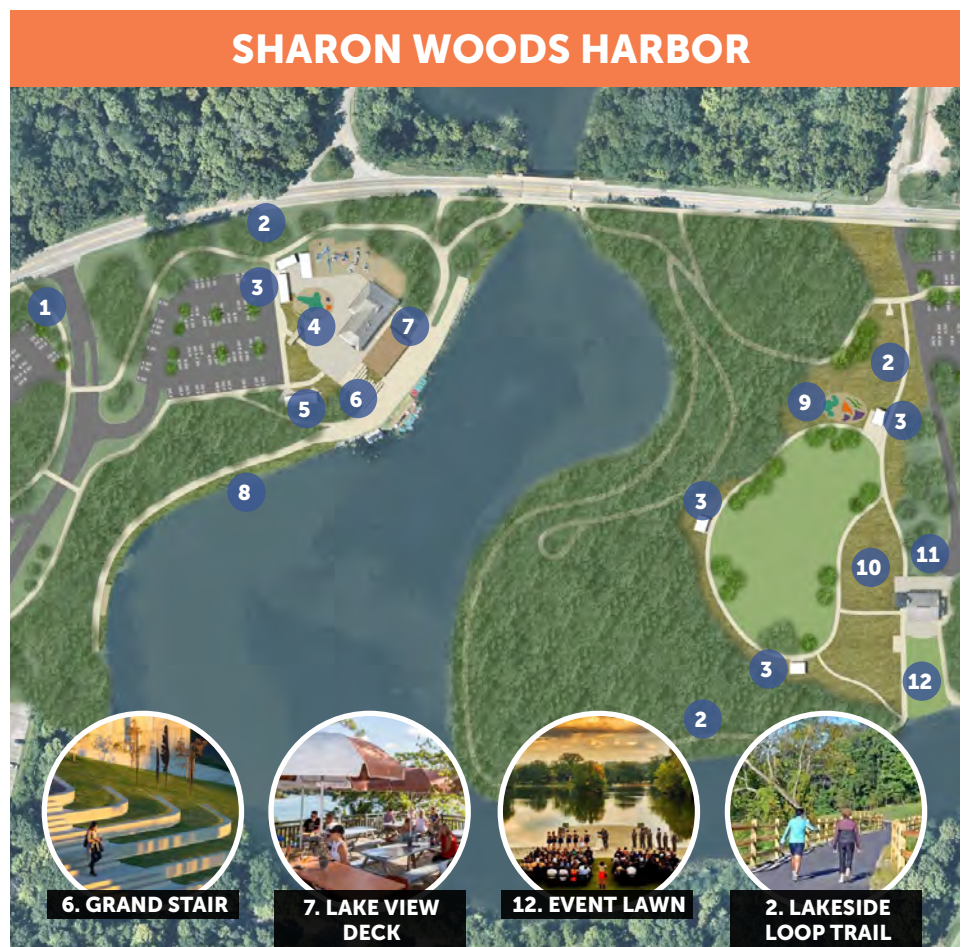
- 1 Improved Park Promenade
- 2 Improved Play Experience
- 3 Living Edge Enhancements
- 4 Fishing Piers
- 5 Amphitheater
- 6 Stormwater/Riparian Edge Plantings
- 7 Relocated WWHS Dock and Improved Canoe/Kayak Access
- 8 New Cafe Building
- 9 Skate Park
- 10 Shelter
- 11 Improved Basketball Court

The harbor improvements at **Winton Woods** focus on improving the play experience (2) with views of the lake, developing an improved lake edge (3) and new fishing piers (4), and relocating and expanding the amphitheater (5). Other improvements include enhancing the canoe/kayak launch (7), and basketball court (11) as well as adding a skate park (9).



- 1 Trail Connection to E. Kemper Rd
- 2 Trail Path
- 3 Picnic Shelter
- 4 Expanded Play Features
- 5 Education Shelter
- 6 Grand Stair
- 7 Lake View Deck / Boat House
- 8 Vegetated Edge Enhancements
- 9 Small Play Area
- 10 Prairie Planting
- 11 Improved Lakeside Lodge
- 12 Event Lawn

The harbor at **Sharon Woods** is limited on space, so planned improvements focus on opening up views and access to the lake by creating a Grand Stair (6) and building a new boat house underneath a new deck (7) along the back of the snack bar building. The plan links the Lakeside Lodge area to the harbor that features a new set of trail connections (2), additional shelters, another play experience, and an Event Lawn (12). This will allow for more space for park users at this popular location.





EXPANDING CAMPING EXPERIENCES

This plan proposes **three new camping experiences**:

- **Miami Whitewater Forest's** existing campground will be converted to pop-up camper and tent-only. This is dependent on creating a new campground on the west side of the county that can better serve large RVs.
- **Winton Woods Campground** will add additional RV spots, including pull-through sites, to service the popular campground.
- **Mitchell Memorial Forest** will add backcountry camping sites that can be paired with new hiking trails, the blueway trail access, and mountain biking activities at the park.



IMPROVING DISC GOLF COURSES

Great Parks is fortunate to have numerous disc golf course and an incredibly proud and dedicated user group. Great Parks recognizes the significance of the growth of the sport and recommends **updating four courses: Embshoff Woods, Miami Whitewater Forest, Winton Woods, and Woodland Mound.** Improvements will include:

- New tee pads and baskets
- Improving signage
- Partnering with local organizations on course design and alignments



BUILD NEW NATURE, EDUCATION, AND EVENT CENTERS

1 NEW NATURE & EDUCATION CENTER AT SHAWNEE LOOKOUT

1 NEW NATURE & EDUCATION CENTER AT WOODLAND MOUND

1 NEW EVENT & EDUCATION CENTER AT GLENWOOD GARDENS

1 NEW ENVIRONMENTAL EDUCATION EXPERIENCE AT SHAKER TRACE NURSERY

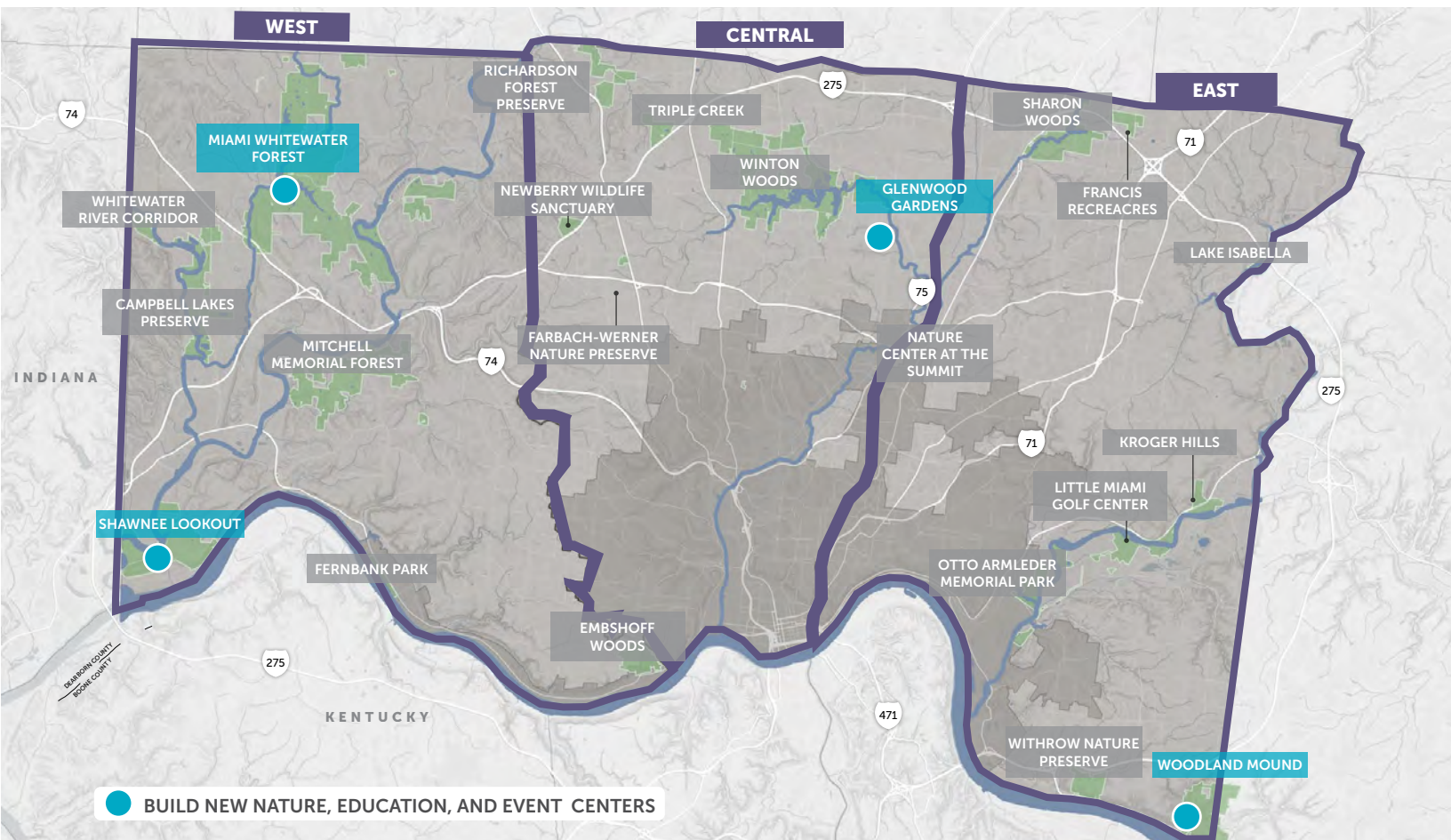
As part of the analysis stage of this plan, the planning team conducted a building audit examining 36 buildings throughout the Great Parks. The findings from this building audit, in addition to input from the community stakeholders and staff, directed the planning team to examine **three major building projects**. These building projects focused on creating high quality, timeless facilities that can serve as hubs for education, interpretation, and gatherings. This plan identifies at least one major building project in each region:

- **Shawnee Lookout Nature and Education Center** in the West Region
- **Glenwood Gardens Event and Education Center** in the Central Region

- **Woodland Mound Nature and Education Center** in the East Region

Each building becomes an anchor attraction for the parks, serving individual park users and group visitors alike by providing a variety of services, flexible spaces, and strategic placement adjacent to popular park features.

While not highlighted in this Executive Summary, the Park and Facility Master Plans also proposes improving the Shaker Trace Nursery at Miami Whitewater Forest to improve production, volunteer and educational experiences by renovating the existing barn and adding new facilities.



SHAWNEE LOOKOUT NATURE & EDUCATION CENTER



- 1 New Nature and Education Center
- 2 Parking Lot Bioswale
- 3 Entrance Plaza
- 4 Trail Hub
- 5 Solar Panels
- 6 Rainwater Harvesting
- 7 Overlooks
- 8 Trail Path
- 9 Amphitheater
- 10 Accessible Trail
- 11 Accessible Stream Trail

The decommissioning of the golf course allows for incorporating a new nature and education center with a larger plan related to a **150-acre ecological restoration** of the area. The location has existing parking and utility infrastructure and is near the park entrance. It is also set away from the culturally sensitive areas of the park where construction could be problematic. The building will support interpretive programming focused on the natural, cultural and environmental attributes of the park. Building features include:

- An upper floor that holds **cultural exhibits** highlighting the 10,000-year history of continuous human habitation of this corner of Hamilton County. This floor also includes **classrooms for education, retail functions, and staff support/administration spaces**.
- A lower level that includes space for **nature exhibits** as well as animal care support space.
- Exterior amenities supporting park programming such as **covered gathering areas** at both ends of the building that can be used for eating and education.
- A **snack bar, and restrooms** at both levels can be accessible to park patrons even when the building exhibit areas are closed.



WOODLAND MOUND NATURE & EDUCATION CENTER

- 1 New Nature and Education Center
- 2 Demonstration Gardens
- 3 Monument Signage
- 4 Drop-Off Loop
- 5 Parking Lot Bioswales
- 6 Existing Gazebo & Water Feature
- 7 Amphitheater / Outdoor Classroom
- 8 Promenade Walk
- 9 Overlook Deck
- 10 Great Lawn
- 11 Restrooms
- 12 Improved Play Experience

A new nature center at **Woodland Mound** will replace the current nature center that is not able to be renovated to meet current programming and staffing needs. The location allows for the existing building to remain in operation during construction and is strategically located to **utilize the existing parking**. Building features will include:

- Connections to nearby **northern and southern trail loops** allowing it to be trail hub for the park.
- A **new overlook deck** created for viewing the dramatic vista of the Ohio River.
- A services section at the entrance of the building that includes retail, staff, and restroom functions.
- A large, flexible exhibit space that can be opened up to an adjacent terrace.
- An outdoor portico sheltering **seating areas, a fireplace and snack bar**.
- An entry portico to **enhance visibility** and serve as a welcoming element.



GLENWOOD GARDENS EVENT & EDUCATION CENTER



- 1 New Event and Education Center
- 2 New Parking Lot
- 3 Improved Access Road
- 4 Expanded Parking
- 5 Realigned Garden Loop Trail
- 6 Gazebo
- 7 Glenwood Gardens to Winton Woods Trail
- 8 Prairie Meadow Planting

This event center provides a suitable space for **ceremonies and receptions as well as for corporate events** of a variety of sizes. The building is strategically located along a curving ridgeline between a service drive to the north and the Garden Loop Trail to the south. The grade change as the Garden Loop Trail descends into the park creates two opportunities. First, a lower floor allows for the creation of a **coffee/snack bar, an activities room, and restrooms as amenities to trail users**. Secondly, it elevates the event center spaces to add drama to the view and allow for separation of event guests from trail users. Other building features include:

- An event center that includes a dividable hall sized to **accommodate 350 guests**.
- A west end vestibule provides access from a **dramatic covered, open air ceremony pavilion**. The covered pavilion is also connected to the trails below allowing it to double as outdoor education space for tour groups.



Site improvements include an **expansion of the existing parking area** to accommodate a larger event, a covered vehicular drop off, and an overflow parking area with additional landscaping appropriate for its location deeper into the park setting.

IMPLEMENT CONSERVATION PROJECTS

5 PRESERVED MATURE WOODLANDS

150 ACRE ECOLOGICAL RESTORATION AT SHAWNEE LOOKOUT

13.5 ACRES RESTORED FOREST AND RIPARIAN AREA AT LITTLE MIAMI GOLF COURSE

10+ ACRE RESTORED WETLAND AND STREAM AT GLENWOOD GARDENS

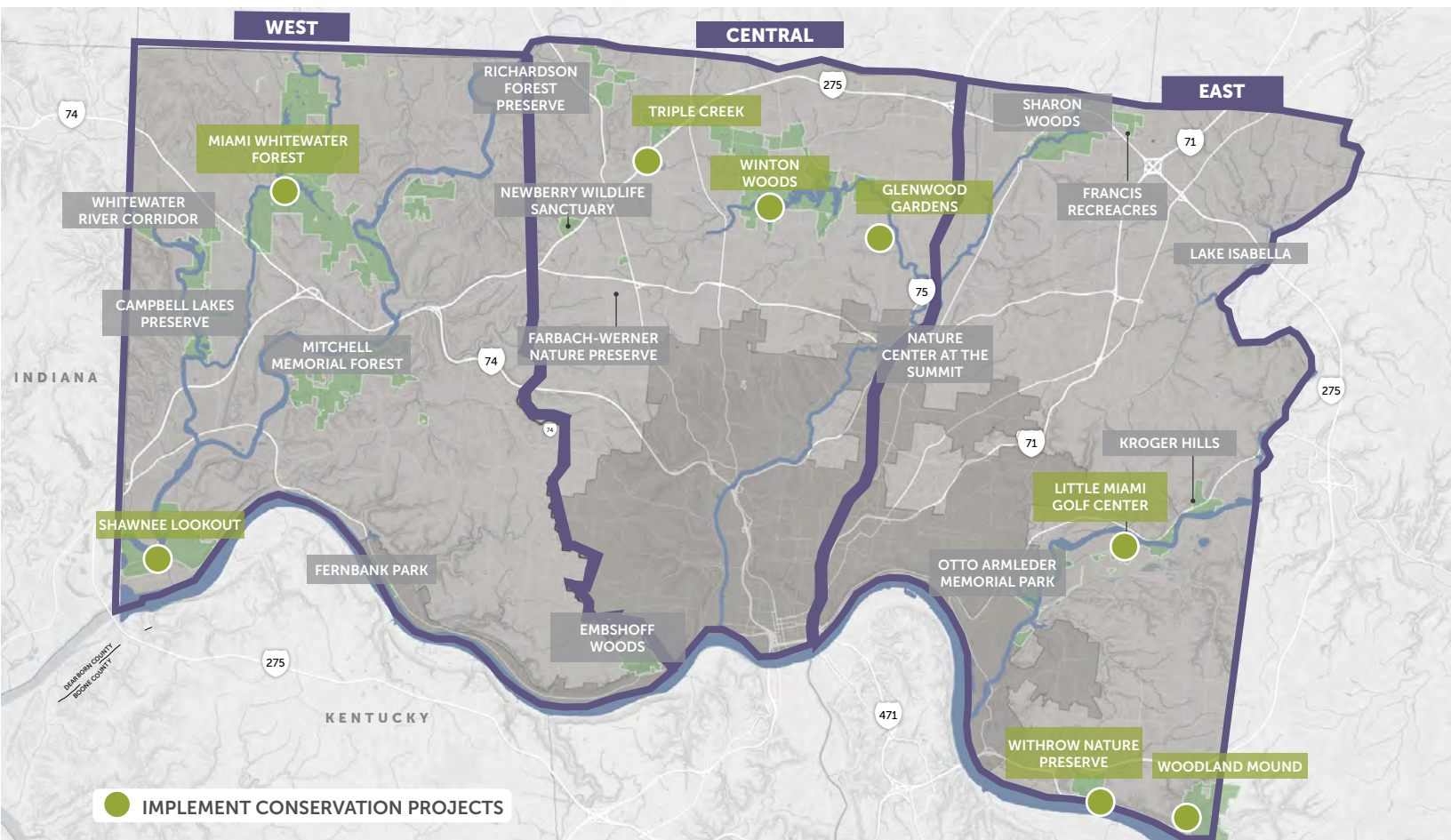
7 GREEN STORMWATER PARKING LOT RETROFITS

The 2019 Comprehensive Plan established a primary goal of Great Parks as being a **recognized leader in conservation**. This plan helps accomplish this goal by identifying specific strategies, recommendations and improvement projects. In the Park and Facility Master Plans, **five types of conservation projects were identified**. These include preserving mature woodlands, restoring streams, restoring wetland, wetlands, restoring riparian areas, and adding green stormwater infrastructure to parking lots. Each offers multiple opportunities to restore ecological functions.

1. Heal an altered landscape,
2. Restore forest resources,
3. Create integrated stream and wetland systems, and
4. Inspire nature education and integrate the landscape with the trail system.

This executive summary showcases one of the projects identified, a **10-plus acre wetland and stream restoration project at Glenwood Gardens**.

From an ecological perspective, the goals of these projects are to:





This portion of Glenwood Gardens is part of the larger Mill Creek Watershed and offers opportunity to restore headwaters, improve stormwater management, develop more trails, and create a better connection with nearby neighbors. This identified project would restore **880 linear feet of stream as part of a larger restoration area of more than 10 acres**. Other features include:

- Removal of drainage pipes and tiles that aren't part of the wetland restoration to restore water flow to the surface.
- Reconnecting the stream to the floodplain. The stream was straightened and altered in the past, and restoration will allow natural drainage patterns.
- At the upper end of the reach where more clay soils are present, minor topography grading can **promote wetland creation and retain water on the floodplain**.

- As the channel nears West Fork Mill Creek, a combination of boulders and bank grading will be necessary to given the steep topography.
- Establishing **two trail connections from Joliet Avenue** through the restored stream and wetland area and to the existing Wetland Loop trail. These new trail connections present an incredible educational opportunity for trail users to learn about these types of restoration projects.

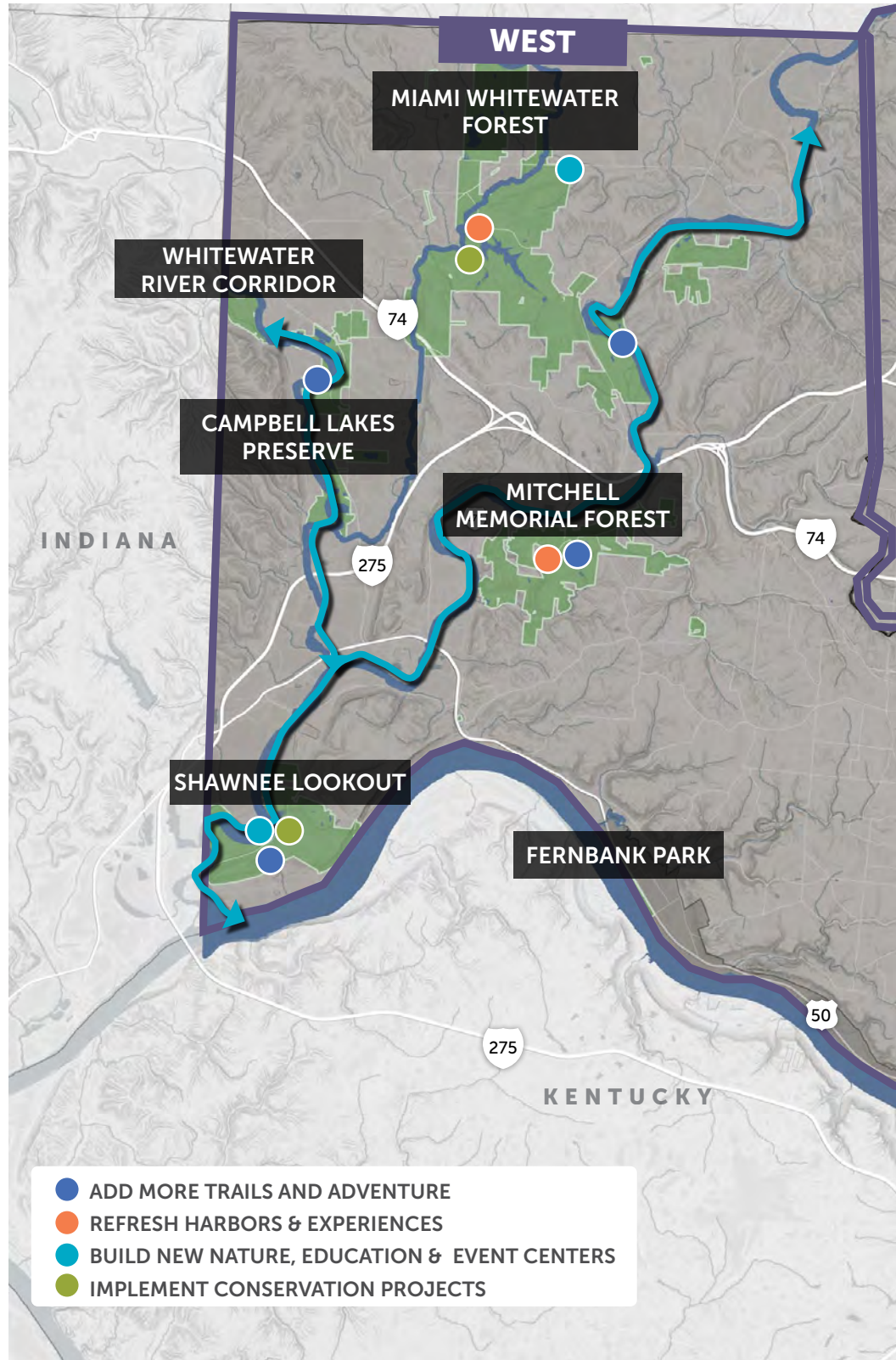
GLENWOOD GARDENS TRILLIUM TRAILS RESTORATION

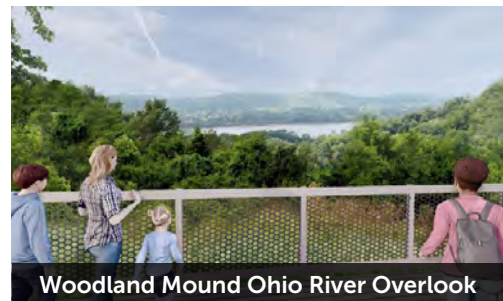
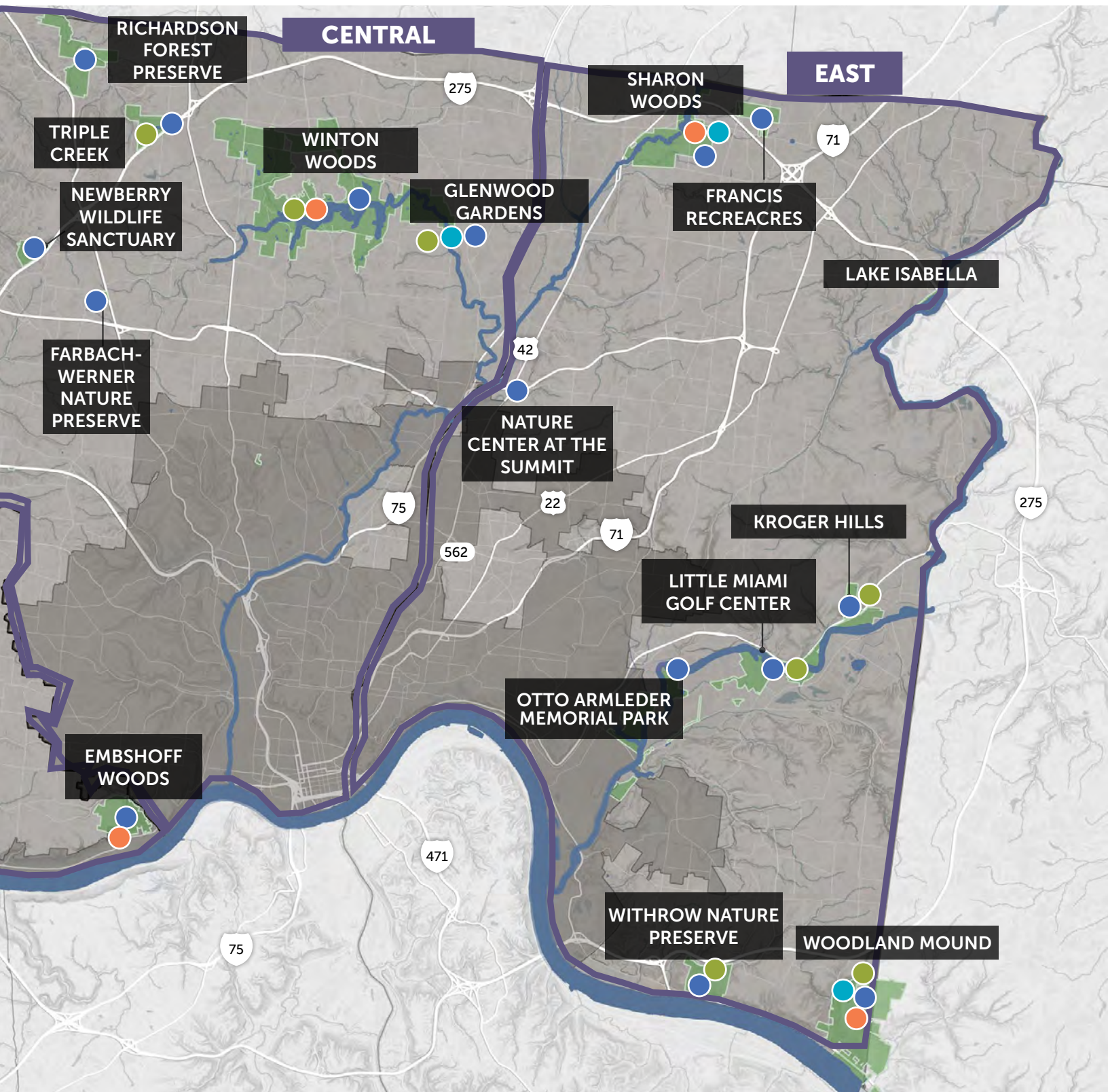
- 1 Restore Forested Riparian Buffer (9 Acres)
- 2 Daylight Existing Pipe Network and Restore as Headwater Seasonal Wetlands
- 3 Restore Remnant Channel as Overflow/ Seasonal Wetlands (1.8 Acres / 880 LF)
- 4 Neighborhood Pedestrian Connections
- 5 Stream restoration as needed to restore Hydraulic Floodplain Connectivity
- 6 Field Restoration

NEXT STEPS & IMPLEMENTATION

Altogether, the planning analysis and community input resulted in nearly 170 ideas for improvements to Great Parks. From those 170 ideas, 63 were identified as projects for more detailed exploration. Most, but not all, of these focus area projects can be found within this Executive Summary report; all of the ideas are contained within the individual park plans. Organized by the four major themes that emerged during the community engagement process, these 63 projects span the entire footprint of Hamilton County, with major improvements identified for each region.

While community priorities are clear, the next phase of this work will require additional community outreach as these planning concepts go through the design and development stage including alignment with the overall future funding priorities. Great Parks is committed to continuing this conversation with the community and following through on its promise to improve the user experience in each of its parks.







2021



MKSK

