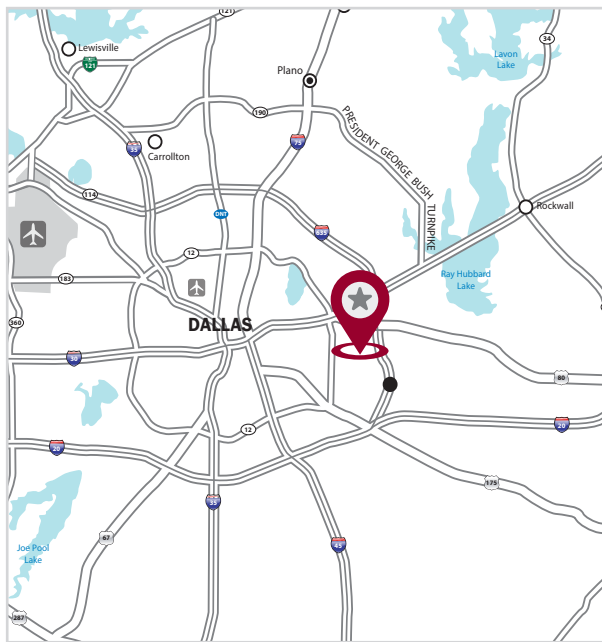


FOR SALE OR LEASE

19,500 SF



222 S TOWN EAST BLVD | MESQUITE, TX 75149



AVAILABILITY HIGHLIGHTS

LISTING HIGHLIGHTS

| | |
|--------------|--|
| AVAILABLE SF | 19,500 SF |
| OFFICE SF | 6,000 SF |
| YEAR BUILT | 1982 |
| CLEAR HEIGHT | 20' |
| LOADING | 2 Dock High 1 Ramped Door |
| SPRINKLERED | Yes |
| POWER | 400A 120/208V 3 Phase |
| COMMENTS | Two story office, 3,000 SF on each floor |

FOR INFORMATION:

Taylor Stell

tstell@lee-associates.com
214.558.1969

Brett Lewis, SIOR

blewis@lee-associates.com
214.669.1717

OWNED BY:



LISTED BY:



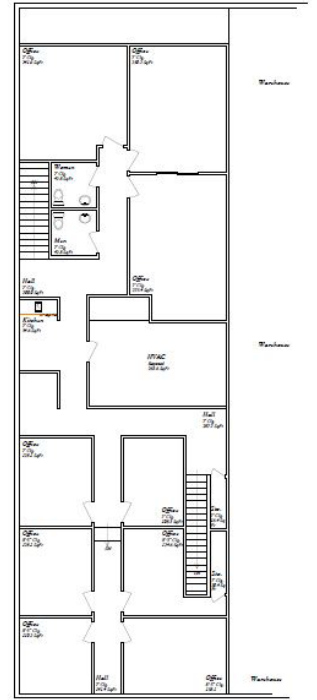
19,500 SF

FOR SALE OR LEASE

FIRST FLOOR



SECOND STORY OFFICE



All information furnished regarding property for sale, rental or financing is from sources deemed reliable, but no warranty or representation is made to the accuracy thereof and same is submitted to errors, omissions, change of price, rental or other conditions prior to sale, lease or financing or withdrawal without notice. No liability of any kind is to be imposed on the broker herein.

FOR INFORMATION:

Taylor Stell

tstell@lee-associates.com
214.558.1969

Brett Lewis, SIOR

blewis@lee-associates.com
214.669.1717

OWNED BY:



LISTED BY:



14950 Quorum Drive, Suite 100
Dallas, Texas 75254
972.934.4000
lee-associates.com