

Altar

Dining table,  
by Miguel Milá

**kettal**

# Dining table

Designer  
Miguel Milá

Collection  
Altar

Reference  
KSA400100

1/3

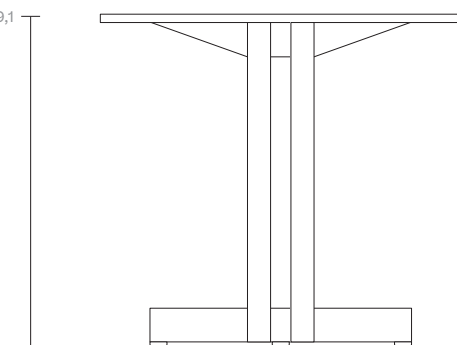
Miguel Milá designed this table in the mid-sixties as an altar for his wedding. It later became a table for everyday use, but was never produced.

As if he were a master craftsman, Miguel Milá designed this piece based on the heart of simplicity and efficiency. Its shape hides its complexity, but at the same time reveals the wood's own character, giving it life and prominence. Its constructive logic makes it strong enough in terms of structure, but formally a beautiful piece.

The beauty of logic and common sense understands neither time nor trend.

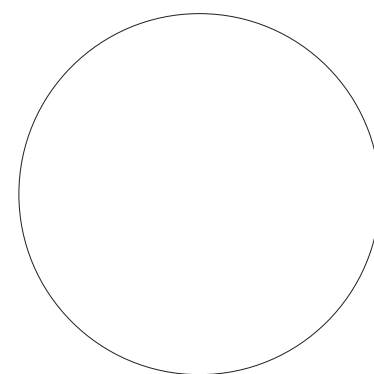
cm/inch

74/29,1



cm/inch

58/22,7



90/35,4



kettal

# Dining table

Designer  
Miguel Milá

Collection  
Altar

Reference  
KSA400100

2/3

## Materials

Teak  
Eco-friendly, A-grade

Aluminium  
Antioxy, Heavy Load, Resistant  
En-1421, Kettalize-It, Anti-  
Scratch, Easy Clean, Flame  
Retardant M1, Eco Friendly  
Ecoembes Recycling Process

Marble  
Antioxy, Mold resistant, Easy  
Clean, Resist U.V., X-Temperature

## Maintenance

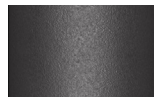
Clean with mild soap using  
sponge or cloth. Be gentle  
while cleaning, do not scrub  
aggressively the fabric. Once  
cleaned please make sure you  
remove soap excess.

In case of aggressive stains  
clean with diluted household  
bleach.

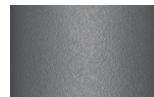
Clean stains promptly. The  
longer it remains, more difficult  
will be to remove.

Once cleaned the fabric steam  
iron the fabric. Just use steam,  
be carefull NOT placing the  
iron directly in the fabric it will  
get damage.

## Table Top Colour



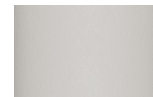
Slate Stone  
01C



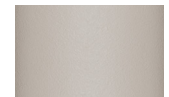
Mysty Smoke  
02C



Ash  
03C



Bone  
04C



Tuff  
05C



Wet Stone  
06C



Sand Dune  
07C



Dry Clay  
08C



Arabica  
09C



Sepia  
19C



Rose Canyon  
16C



Blossom  
20C



Ruby Dust  
18C



Sunset Glow  
17C



Terrarosa  
15C



Terracota  
14C



Amber  
13C



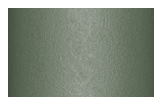
Ginger Root  
12C



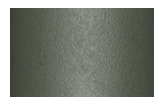
Desert Storm  
11C



African Savannah  
10C



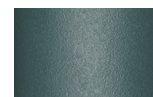
Spring Meadow  
28C



Kombu  
29C



Forest Stream  
27C



Sea Moss  
26C



Glacier Ice  
25C



Polar Sky  
24C



Nightfall  
23C



Indigo  
22C



Wild Lupin  
21C



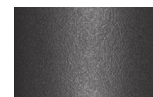
Galena  
33C



Bronze  
30C



Corten  
31C



Manganese  
32C

## Table Top Colour

## Marble



Marble  
079

# Dining table

Designer  
Miguel Milá

Collection  
Altar

Reference  
KSA400100

3/3

## Other Characteristics

 Adjustable legs

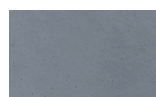
## Table Top Options

Aluminium 80 x 80  
Aluminium 90 x 90  
Aluminium Ø90  
Glaze 80 x 80  
Glaze 90 x 90  
Glaze Ø90  
Teak 80 x 80 contract (Untreated)  
Teak 90 x 90 contract (Untreated)  
Teak Ø90  
White Marble 94 x 94  
White Marble Ø90

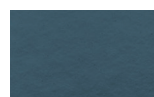
## Table Top Colour



Dolomite  
373



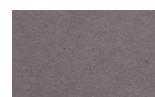
Indian Sapphire  
371



Montana  
377



Erinite  
376



Black Diamond  
374



Smoky Quartz  
370



Jasper  
375



Obsidian  
372

## Table Top Colour



Teak  
(Untreated)

## Teak

## Legs Finish



Wood  
(Untreated)

## Wood