

# PARA EMPEZAR



AGUACHILE VERDE

**AGUACHILE VERDE\*** 15.99 | 275 cal.  
Shrimp, avocado, purple onion, cucumber, serrano-lime sauce

**AGUACHILE DE MANGO\*** 15.99 | 455 cal.  
Shrimp, mango, avocado, cucumber, habanero, mango-lime sauce

**CEVICHE\*** 12.99 | 490 cal.  
Shrimp, tilapia, avocado y pico de gallo

**COCKTAIL DE SHRIMP\*** 12.49 | 280 cal.  
Shrimp, avocado, shrimp cocktail sauce y pico de gallo

**FRIED JALAPEÑO Y PICKLE BASKET** 8.99 | 1030 cal.  
Fried jalapeños y pickles served with jalapeño ranch

**QUESADILLA** 12.49 | 760 cal.  
Fajita chicken con veggies, spicy mayonnaise y cheeses

**Beef or combo** 13.49 | 830/790 cal.

**POLLO TENDERS** 12.49 | 1170 cal.  
Served with fries and jalapeño ranch

**CHIPS Y CHIPOTLE QUESO** 8.99 | 680 cal.  
Chips y spicy jack chipotle queso

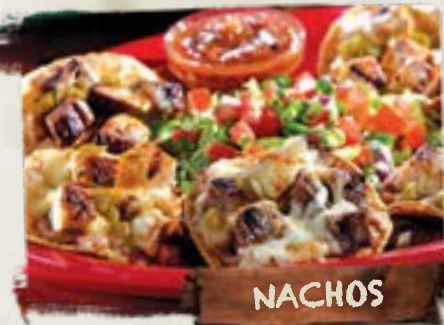
**CHIPS Y SALSA** 5.99 | 320 cal.  
Chips con salsa de la casa

**CHIPS Y GUACAMOLE** 8.49 | 430 cal.  
Chips con guacamole de la casa

**ELOTE LOCO** 6.49 | 300 cal.  
Hand cut corn con crema, queso fresco, valentina y chile en polvo

**NACHOS** 14.99 | 1080 cal.  
Fajita chicken con refried beans y jalapeños served with pico, sour cream y guacamole

**Beef or combo** 15.99 | 1150/1120 cal.



NACHOS

# ENSALADAS Y SOPAS

**GUACAMOLE CHICKEN SALAD** 13.99 | 1110 cal.  
Grilled chicken, pico, roasted peppers, tortilla strips, queso fresco y creamy guacamole dressing

**HOUSE SIDE SALAD** 5.99 | 400 cal.

**SOPA DE TORTILLA** CUP 5.49 | 330 cal. / BOWL 8.49 | 630 cal.  
Chicken, veggies, avocado, shredded cheese, serranos y tortilla strips



GUACAMOLE CHICKEN SALAD

# ESPECIALES



MEXICO CITY TACOS

**MEXICO CITY TACOS** 15.99 | 1080 cal.  
Barbacoa, queso fresco, salsa verde, guacamole, habanero onions y cilantro, served with rice y refried beans on flour tortillas

**ROASTED POLLO**  
Roasted chicken, grilled onion, chile toreado, rice, frijoles y corn tortillas  
½ Roasted Pollo 16.49 | 1330 cal.  
Whole Roasted Pollo 25.49 | 2640 cal.

**SIZZLING FAJITAS** 15.99 | 1310-1370 cal.  
Sizzling fajita chicken served with pico, cheese, sour cream, guacamole, rice, frijoles y flour tortillas

**Beef** 16.99 | 1430-1500 cal.

**Combo** 16.99 | 1420-1490 cal.

Add a Chile Tornado for only 1.99 more (Add 5 cal.)



ROASTED POLLO

# HAMBURGUESAS Y SÁNDWICHES CON FRIES



LEMON PEPPER CHICKEN SANDWICH

**LEMON PEPPER CHICKEN SANDWICH** 13.49 | 1920 cal.  
Fried chicken breast, lemon pepper sauce, cole slaw, habanero onions, tomato y mayonesa, con fries

**CRISPY BUFFALO CHICKEN SANDWICH** 12.99 | 1530 cal.  
Fried chicken breast, buffalo sauce, lettuce, tomato y spicy ranch, con fries

**GRINGO BURGER\*** 12.49 | 1500 cal.  
American cheese, lettuce, tomato, onions, pickles, mayo and mustard, con fries

**YUCATÁN BURGER\*** 13.99 | 1410 cal.  
Jalapeños, pepper jack, guacamole, lettuce, tomato, onions y mayonesa, con fries



YUCATÁN BURGER

# STREET TACOS



SERVED WITH RICE + REFRIED BEANS OR CHARRO BEANS  
CILANTRO, WHITE ONIONS, HABANERO ONIONS, GREEN SALSA AND LIME

3 TACOS 12.49 | 4 TACOS 13.49

(\$4.49 EACH / \*additional 50¢ per taco for BEEF or SEAFOOD)



STREET TACOS

**PORK**  
CARNITAS 660-900 cal.  
AL PASTOR 610-830 cal.

**BEEF**  
\*BARBACOA 580-790 cal.  
\*FAJITA BEEF 660-890 cal.

**CHICKEN**  
FAJITA CHICKEN 550-740 cal.

**SEAFOOD**  
\*TILAPIA 460-620 cal.  
\*CAMARONES (SHRIMP) 790-980 cal.



# WINGS

SERVED WITH RANCH.

ADD FRIES TO ANY WINGS FOR 4.99 Add 290 cal.

LOADED FRIES with Queso, Bacon and Jalapeño +3.99 Add 930 cal.

**TRANQUILAS MILD**  
HONEY SWEET BBQ  
LEMON PEPPER  
SPICY RANCH RUB

**PICOSAS MEDIUM**  
SPICY BUFFALO  
GARLIC PARMESAN  
CAJUN RUB

**CALIENTES HOT**  
SMOKY CHIPOTLE  
JALAPEÑO LIME  
PINEAPPLE HABANERO  
MANGO HABANERO



SPICY BUFFALO BONELESS



PINEAPPLE HABANERO

**BONELESS**  
6 10.99 | 660-1490 cal.

12 16.99 | 1320-2970 cal.

18 21.99 | 1980-4450 cal.

40 40.99 | 4530-9930 cal.

**BONE-IN**  
6 11.99 | 680-1480 cal.

12 17.99 | 1370-2970 cal.

18 22.99 | 2040-4440 cal.

40 42.99 | 4510-9910 cal.

\* These items may contain raw or undercooked ingredients. Consuming raw or undercooked meats, poultry, seafood, shellfish, or eggs may increase your risk food borne illness, especially if you have certain medical conditions. 2,000 calories a day is used for general nutrition advice, but calorie needs vary. Additional nutrition information available upon request.

A 20% gratuity will be added to parties of 6 or more.



DOS.A.RITA

### LOCA RITA 520 cal.

Made with the finest tequila from the Mexican Highlands, Triple Sec, Nuestra Receta de Sweet & Sour y Sangría-

### PREMIUM LOCA RITA 450 cal.

Con Patrón Silver, Triple Sec, Nuestra Receta Sweet & Sour y Sangría on the rocks

### DOS.A.RITA 420 cal.

7 oz Dos XX in a refreshing Margarita con the finest tequila from the Mexican Highlands, Triple Sec & Nuestra Receta de Sweet & Sour

### CORONA-RITA 430 cal.

7 oz Coronita in a refreshing Margarita con the finest tequila from the Mexican Highlands, Triple Sec & Nuestra Receta de Sweet & Sour

### EL DON 200 cal.

Sólo para conocedores. One of our favorite Margaritas, prepared with Don Julio Blanco, Grand Marnier and a splash of orange juice

ADD MORE  
DIVERSION TO  
YOUR RITAS!  
GRAND MARNIER  
FLOAT  
ADD 60 CAL



LA MESSCLADITA



LA MAMALONA

### LA MESSCLADITA 180 cal.

Bosscal Joven Mezcal, Pineapple Juice, Triple Sec, sweet Agave, Chamoy and Tajin rim. Refreshing & exotic!

### TARUGO MAREADO 340 cal.

Jarrito de Tamarindo elevado with Smirnoff Spicy Tamarind Vodka, dressed with Chamoy and Tajín.

### LA MAMALONA 370 cal.

Jarrito de Mango elevado con Bacardi Mango Chile Rum, dressed with Chamoy and Tajín.



LA TÓXICA



MEXICAN MULE

### LA TÓXICA 70 cal.

Smirnoff Raspberry Vodka, Cranberry & Te Levanta Energía.

### HORCHATA LOCA 220 cal.

Agua fresca made with Teremana Tequila, y Rumchata, rimmed with cinnamon.

### MEXICAN MULE 360 cal.

Made con El Jimador Tequila o Svedka Vodka, ginger, freshly squeezed lime juice, topped off with club soda, rimmed with Tajín.



LA DIABLITA



CHIKITA PICOSA

### LA DIABLITA 220 cal.

Mango flavored made con Corazón Blanco Tequila, freshly squeezed lime juice, a pinch of chamoy, rimmed with Tajín.

### CHIKITA PICOSA 70 cal.

¿Te atreves? 80 PROOF Chuckle Rum, Pineapple Juice and Sprite rimmed with Tajin

## AGUAS FRESCAS 32 OZ

AGUA DE PIÑA 4.99 | 360 cal.

AGUA DE HORCHATA 4.99 | 210 cal.

# SHOTS

OUR SHOTS ALWAYS SCORE BIG.  
ASK YOUR CHICA FOR ANY SPECIAL SHOT REQUEST NOT LISTED BELOW.

## SHOTS

PINK TACO Lunazul Silver & Watermelon 150 cal.

ROYAL F\*%& Crown Royal & Peach Schnapps 120 cal.

STAR BURST Smirnoff Vanilla & Watermelon 130 cal.

VEGAS BOMB Crown Royal, Peach & Energía Drink 100 cal.

JÄGER BOMB Jägermeister & Energía Drink 140 cal.

RED GUMMY BEAR Smirnoff Raspberry & Peach Schnapps 100 cal.

ADIOS MF'ER 90 cal.

EFFEN PEPINO SHOT 100 cal.

FIREBALL 100 cal.

JOLLY RANCHER 90 cal.

GREEN TEA SHOT 142 cal.

## FAMOUS LOCO SHOTS

PITO LOCO SHOT 120 cal.

PALETA SHOT 110 cal.

## CHUPES 70-130 cal.

ABSOLUT VODKA

BUCHANAN'S

BUCHANAN'S PINEAPPLE

CAPTAIN MORGAN

CHIVAS REGAL

CHUCKLE RUM

CÎROC

CROWN ROYAL

EFFEN VODKA

HENNESSY

HPNOTIQ

JAMESON

JACK DANIEL'S

MALIBU RUM

PROPER TWELVE WHISKEY

RUMCHATA

SVEDKA VODKA

TITO'S VODKA

PARROT BAY COCONUT RUM

## TEQUILERO 80-100 cal.

BOSSCAL JOVEN MEZCAL

1800 SILVER & REPOSADO

CAZADORES

DON JULIO BLANCO & REPOSADO

EL JIMADOR SILVER & REPOSADO

ESPOLON BLANCO

## TEQUILA PA' JEFES

DON JULIO 1942

CLASE AZUL

KOMOS

DON FULANO BLANCO

HERRADURA SILVER & REPOSADO

HORNITOS

JOSE CUERVO ESPECIAL SILVER & GOLD

PATRÓN AÑEJO

PATRÓN REPOSADO

PATRÓN SILVER

## NEW TEQUILAS

TEREMANA BLANCO & REPOSADO

CORAZÓN BLANCO

SAUZA TRES GENERACIONES PLATA

FLECHA AZUL BLANCO & REPOSADO

MAESTRO DOBEL DIAMANTE



## TE LEVANTA ENERGY DRINK

2 FOR \$4  
220 cal. per can

## NEW BEBIDAS

ANGRY ORCHARD 190 cal.

DOS XX LIME & SALT CERVEZA 140 cal.

HIGH NOON PINEAPPLE & PEACH 100 cal.

TOPO CHICO STRAWBERRY GUAVA 100 cal.

TWISTED TEA 190 cal.

## PA' LA CRUDA

### MICHELADA CON CERVEZA

(Pruébala con cerveza Modelo Add 15 cal.)

DOMESTIC IMPORT

LA CASA  
OF THE

# BALÓN

60 OZ

DOMESTIC  
420-550 cal.

IMPORT  
430-840 cal.

100 OZ

DOMESTIC  
710-910 cal.

IMPORT  
710-1400 cal.



## BARRIL

DOMESTIC

100-170 cal.

BUD LIGHT

BUDWEISER

COORS LIGHT

MICHELOB ULTRA

MICHELOB ULTRA PURO ORO

MILLER LITE

IMPORT/PREMIUM

100-200 cal.

805 CERVEZA

BLUE MOON

CORONA PREMIER

DOS XX AMBAR

DOS XX LAGER

ESTRELLA

MANGO CART

MODELO ESPECIAL

PACÍFICO



CERVEZA  
TEMP  
29°

## BOTELLAS

DOMESTIC 70-150 cal.



IMPORT/PREMIUM 90-190 cal.



## CUBETAS

DOMESTIC

IMPORT/PREMIUM