

2500 - 2536

NE LOOP 820

Fort Worth, Texas 76102

FOR LEASE OR SALE
15,000 - 69,155 SF

Newly Renovated
Zoned K Heavy Industrial



PROPERTY HIGHLIGHTS

- Divisible 15,000 SF to 69,155 SF
- 4,574 SF Office
- Newly Renovated & New Roof
- 18' CH
- 13 Dock Doors, 1 Ramp Door
- Zoned K Heavy Industrial
- 1,600 Amps
- Backup Generator: Diesel-Powered 400kW Generator with 340 Gallon Tank Platform
- 100% Climate-Controlled Warehouse
- Sprinklered
- Highway Frontage and Visibility
- Proximity to I-35W and Loop 820N

TODD HUBBARD, SIOR

817.872.3901
thubbard@nairl.com

MICHAEL NEWSOME

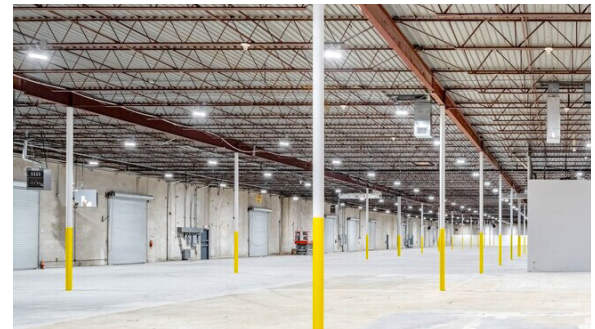
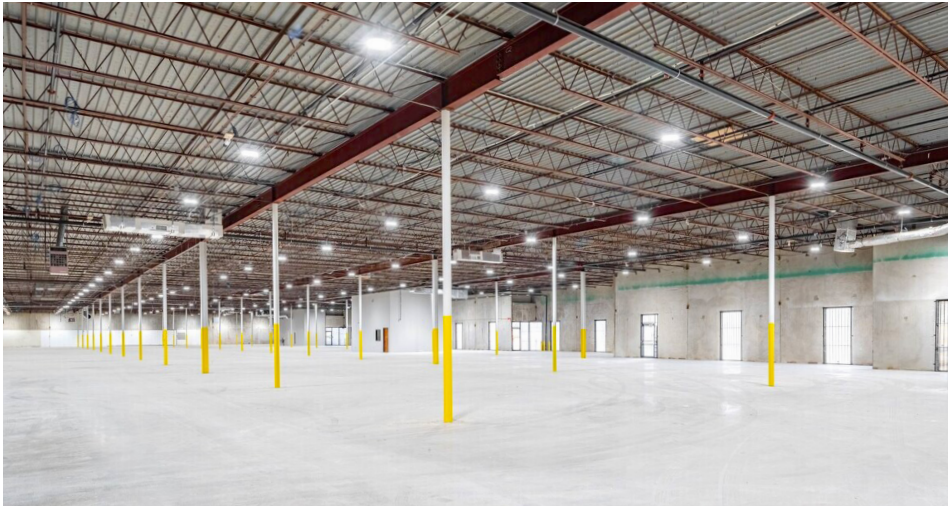
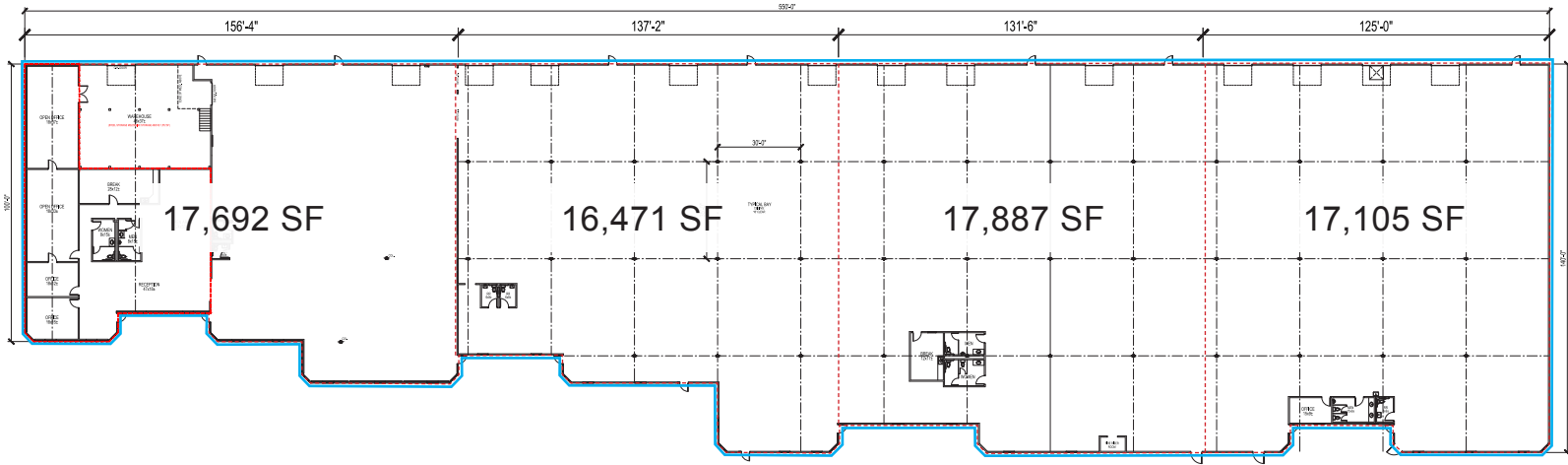
817.872.3903
mnewsome@nairl.com

JOE MCLINEY

817.872.3914
jmcliney@nairl.com

NAI Robert Lynn

FLOOR PLAN



TODD HUBBARD, SIOR
817.872.3901
thubbard@nairl.com

MICHAEL NEWSOME
817.872.3903
mnewsome@nairl.com

JOE MCLINEY
817.872.3914
jmcliney@nairl.com

NAI Robert Lynn

2500-2536 NE LOOP 820, FORT WORTH, TEXAS 76102

FORT WORTH



TODD HUBBARD, SIOR
 817.872.3901
 thubbard@nairl.com

MICHAEL NEWSOME
 817.872.3903
 mnewsome@nairl.com

JOE MCLINEY
 817.872.3914
 jmcliney@nairl.com

NAI Robert Lynn