



Match Day Inspection Form

This Match Day Inspection Form is a risk management tool that should be completed at the start of the day at each venue. It is designed with amateur sports volunteers in mind to assist you to identify risks present on the day and to take steps to prevent injuries to players and harm to others at the venue, resulting in claims for negligence. This inspection form does not identify all risks.

Gow-Gates and FFA suggest you use your own experience and initiative to identify additional risks that may be present.

A representative from each participating team should consider the matters presented on this form and sign it attesting to the information it contains.

This completed form should be presented to the ground manager and kept on file by the home club.

Venue		
Date		
MATCHES		
1. Are there any matches to be played today which pose a greater than normal risk?	Yes	No
Points to consider include: Player defections, previous matches played with bad blood, local derby, close position on the ladder.		
2. Have match officials been made aware of any increased risks?	Yes	No
Points to consider include: Matches as per Q1 and areas of the playing surface		
FIELD OF PLAY		
1. Is ground marking compliant with FIFA and FFA regulations?	Yes	No
2. Is the playing field free of any debris that may cause increased risk of injury?	Yes	No
Points to consider include: Broken glass, sprinkler heads, sprinkler covers, tree roots, hard cricket pitches, pot holes, tent/tarpaulin pegs, cans		
3. Is any perimeter fencing a safe distance from the field of play and/or adequately covered?	Yes	No

LIGHTING		
1.	Do floodlights meet Australian standards for...	Yes No
GOAL POSTS		
1.	Are goal posts and nets secured correctly and compliant FIFA, FFA and Local-By-Laws and meet the guidelines set the ACCC	Yes No
If No to the above, please visit their website www.productsafety.gov.au/soccergoals		
2.	Are goal posts secured by at least one anchor?	Yes No
LOCATION		
1.	Is a stretcher available?	Yes No
2.	Is there access for an ambulance to the field of play?	Yes No
3.	Are public areas and car parks free of visible risks?	Yes No
Points to consider: Collapsed seats, protruding wires, broken windows, damaged steps, steps without hand rails, free of debris		
4.	Are first aid kits appropriately stocked?	Yes No
CANTEEN		
1.	Are hot water facilities, fat fryers, ovens and pie warmers out of reach of children?	Yes No
2.	Are there safety instructions and warning signs of hot surfaces?	Yes No

CHANGE ROOMS

1. Are change room floors safe?

Yes

No

Points to consider include: Blood spillage, sharp edges, medical supplies safely stored?

2. Are change room lights and windows shielded from impact?

Yes

No

3. Are change rooms clean and hygienic?

Yes

No

4. Is 'Safe Football' collateral displayed and made available to match day volunteers?

Yes

No

WEATHER

1. Is weather fit to commence play?

Yes

No

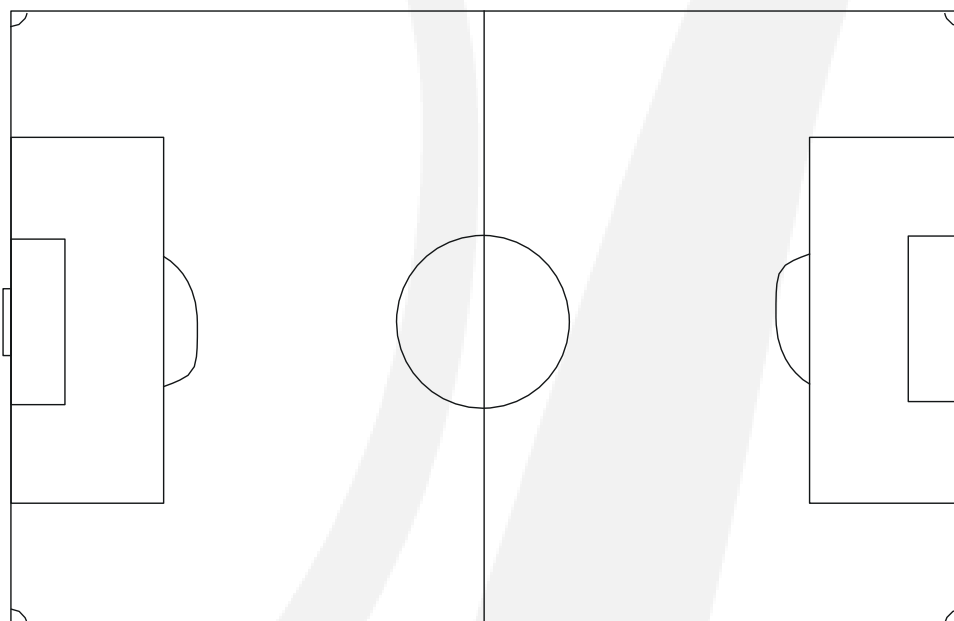
2. Is extreme weather predicted for the day which could pose a risk?

Yes

No

Points to consider: Heavy rain, hail, fog, lightning and heat

Please highlight on the below diagram the location of any identified risks:



ACTION TAKEN

If any risks have been identified in completing this form please provide details below, including steps taken to reduce risks

SIGNED

Home Club Representative

Name

Signature

Away Club Representative

Name

Signature