



“The sky is already purple, the first few stars have appeared, suddenly, as if someone had thrown a handful of silver across the edge of the world.”
 Alice Hoffman

Electrical Specifications @STC (AM1.5, 1,000 W/m², 25 °C)

Module Type (BMU or BSU)		250	270*
Nominal Power	P_{MPP} [W]	250	270
Short Circuit Current	I_{SC} [A]	8.75	9.25
Open Circuit Voltage	V_{OC} [V]	38.5	39.4
MPP Current	I_{MPP} [A]	8.30	8.85
MPP Voltage	V_{MPP} [V]	30.1	30.5
Solar Cell Efficiency	η_c [%]	17.1	18.5
Module Efficiency	η_m [%]	15.3	16.5
Power Output Tolerance		0+5W (Rustic Red) / $\pm 3\%$ (other colours)	
Maximum Reverse Current		18 A	
Maximum System Voltage		1,000 V (Application Class A)	

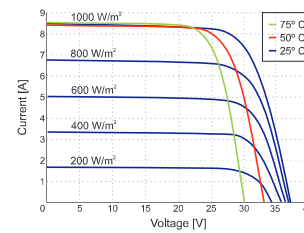
Power classes vary depending on colour. Efficiency at irradiation 200 W/m²: 99.3% of STC efficiency or higher. Power measurement tolerance: +/- 3%. *Available only for BISOL Spectrum Rustic Red.

Electrical Specifications @NOCT (AM1.5, 800 W/m², 20 °C, wind: 1 m/s; Cell Temperature 44 °C):

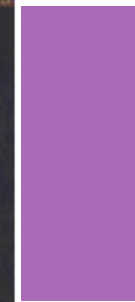
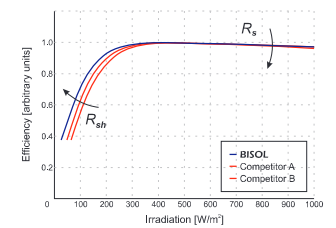
Module Type (BMU or BSU)		250	270*
Nominal Power	P_{MPP} [W]	185	200
Short Circuit Current	I_{SC} [A]	7.08	7.49
Open Circuit Voltage	V_{OC} [V]	35.1	36.0
MPP Current	I_{MPP} [A]	6.72	7.17
MPP Voltage	V_{MPP} [V]	27.5	27.8

Power measurement tolerance: +/- 3%.

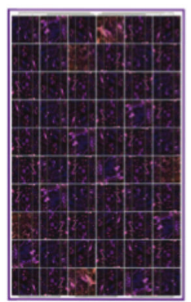
I-V Curve



Effective Efficiency



Charming Purple



Marble Pink



“Autumn seemed to arrive suddenly that year. The morning of the 1st September was crisp and golden as an apple.”
 J.K. Rowling

Thermal Specifications

Current Temperature Coefficient	α	+ 0.049 %/K
Voltage Temperature Coefficient	β	- 0.31 %/K
Power Temperature Coefficient	γ	- 0.40 %/K
NOCT		44 °C
Temperature range		-40 °C to +85 °C

Mechanical Specifications

Solar Cells	60 multi c-Si in series / 156 mm x 156 mm (6+")
Cell Colour Pattern	Single-shade or multi-shade (Marble)
Junction Box / Connectors	Three bypass diodes / MC4 compatible / IP67
Frame	Standard frame (anodized AL with drainage holes and rigid anchored corners) or BIPV (Solrif®) frame
Frame Colour	Any RAL colour code, black or silver
Back Sheet Colour	Black, white or transparent
Glass	3.2 mm glass with anti-reflective coating / tempered / high-transparency / low-iron content
Impact resistance	Hailstone / Φ 25 mm / 83 km/h (51 mph)

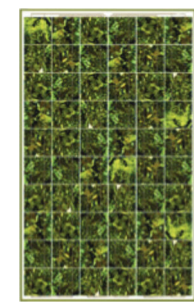
In compliance with:

IEC 61730 Ed.1 / 61215 Ed.2 | **IEC** 62804-1 | **IEC** 61701 | Salt water mist resistance | **IEC** 62716 | Ammonia resistance | **CE**
European Recycling Platform | **TUV Rheinland** | **Certisolis** | CRE3 | **VKF** | **ASA** | **HW3** | **AS5033** compliant
BUREAU VERITAS Certification | **BUREAU VERITAS** | **ISTITUTO GIORDANO** | Qualità al Plurale | Fire resistant - Class 1 (UNI 91771) | **MCS** | **AIT** | AUSTRIAN INSTITUTE OF TECHNOLOGY

Certificates available upon special request. Additional charges may apply.



Olive Green



Marble Gold