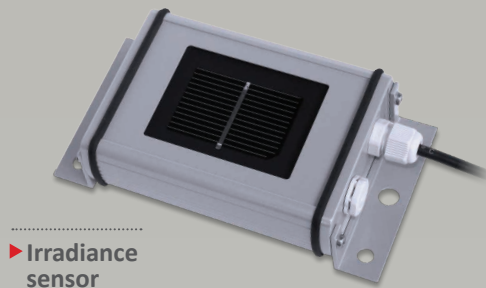


Environmental Sensors

SE1000-SEN-IRR-S1 / SE1000-SEN-TAMB-S1
SE1000-SEN-TMOD-S1 / SE1000-SEN-WIND-S1
SE1000-SEN-PSU-S1



▶ Irradiance sensor



▶ Ambient Temperature sensor



▶ Module Temperature sensor



▶ Wind Velocity sensor



▶ External Power Supply

Environmental Monitoring of your SolarEdge System

- Connect environmental sensors to the SolarEdge Control and Communication Gateway for monitoring of your site
- Used to calculate site performance ratio
- Irradiance, temperature and wind measurements



Environmental Sensors

SE1000-SEN-IRR-S1 / SE1000-SEN-TAMB-S1 / SE1000-SEN-TMOD-S1 /
SE1000-SEN-WIND-S1 / SE1000-SEN-PSU-S1

	Irradiance SE1000-SEN-IRR-S1	Ambient Temperature SE1000-SEN-TAMB-S1	Module Temperature SE1000-SEN-TMOD-S1	Wind Velocity SE1000-SEN-WIND-S1	Units
OUTPUT					
Electrical output range	0-1.4V	0-10V	4-20mA	4-20mA	
MEASUREMENT					
Range	0-1400 W/m ²	-50 to 50 °C / -55 to 120 °F	-10 to 120 °C / 15 to 245 °F	0-50 m/s	
Accuracy	±5%	1% of full scale	1% of full scale	±0.5 m/s or ±3% of measuring value	
INSTALLATION SPECIFICATIONS					
24V External Power Supply (SE1000-SEN-PSU-S1)	Not needed	Needed	Needed	Not needed	
Control and Communication Gateway (sold separately; SE1000-CCG)	Needed				
Dimensions	154 x 86 x 40 / 6 x 3.5 x 1.5	58 x 103 x 50 / 2.3 x 4 x 2	58 x 103 x 50 / 2.3 x 4 x 2	165 x 105 x 105 / 6.5 x 4.2 x 4.2	mm / in
Weight	340 / 0.75	110 / 0.25	115 / 0.25	750 / 1.65	gm / lb
Enclosure type	Powder-coated aluminum	Polyamide	Polyamide	Housing - Aluminum (AlMgSi1) Cup star - Synthetic, with fibre glass (PC-GF10) Bottom - Synthetic (POM H2320)	
Operating Temperature	-20 to 70 / -4 to 155	-35 to 70 / -30 to 155	-35 to 70 / -30 to 155	0 to 70 / 32 to 155	°C / °F
Protection Rating	IP65	IP65	IP65	IP55	

The warranty and service for the sensors is provided directly by Ingenieurbüro Mencke & Tegtmeier GmbH; for more details, please see <http://www.imt-solar.com/products.html>

	24V external power supply for temperature sensors SE1000-SEN-PSU-S1	Units
OUTPUT		
Electrical output	24V / 420mA	
STANDARD COMPLIANCE		
Safety	EN60950-1, UL508	
Immunity	EN61000-4-2, 3, 4, 5, 6, 8, 11, EN55024, EN61000-6-1, EN61204-3, light industry level, criteria A	
Emissions	EN55011, EN55022 (CISPR22), EN61204-3 Class B, EN61000-3-2,-3	
INSTALLATION SPECIFICATIONS		
Max. number of sensors powered by the power supply	2	
Dimensions	22.5 x 90 x 100 / 0.9 x 3.5 x 4	mm / in
Weight	170 / 0.4	gm / lb
Operating Temperature	-20 to 70 / -4 to 155	°C / °F
Protection Rating	IP20 Indoor	

The warranty and service for the power supply is provided directly by Mean Well; for more details, please see <http://www.meanwell.com/search/MDR-10/>

