

The logo for ESDEC, featuring the word "ESDEC" in a bold, blue, sans-serif font. A horizontal orange bar is positioned below the letters "D" and "E".

**ESDEC**

INNOVATIVE MOUNTING SYSTEMS

A photograph of a slanted roof with solar panels. The roof is covered in blue solar panels, and the mounting system is visible. The sky is a clear, light blue. The image is split into two vertical panels: the left panel is a dark blue gradient, and the right panel shows the actual roof and panels.

# THE NEW STANDARD FOR MOUNTING ON SLANTED ROOFS

**CLICKFIT**

EVO

TILED ROOF

A decorative graphic consisting of a series of parallel diagonal lines in white and dark blue, located at the bottom left of the page.

[www.esdec.com](http://www.esdec.com)

# CLICKFIT EVO'S 4 BASIC COMPONENTS

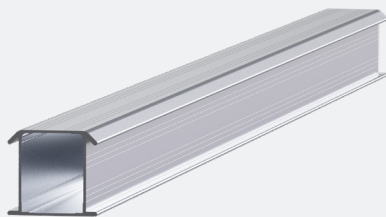
HOOKS OR SCREWS



## 1. UNIVERSAL ROOF HOOK / TRUSS HOOK

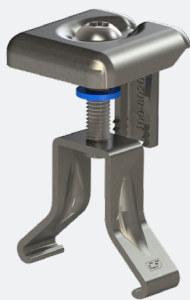
Quick & flexible installation with the ClickFit EVO Universal Roof Hook without screwing. Do you prefer screwing into the truss? Use the ClickFit EVO Truss Hook. Do you prefer screws? Use the ClickFit EVO Truss Hook. Universal Roof Hook and Truss Hook can be combined in a single roof construction.

- Universal Roof Hook for all roof tile/batten combinations
- Easy mounting process from the top
- Stepless adjustment of height and width
- Better point load distribution, lower risk of tile breakage and leakage
- Self-aligning click connection: easier and faster
- Can be used for horizontal and vertical mounting
- Integrated cable management



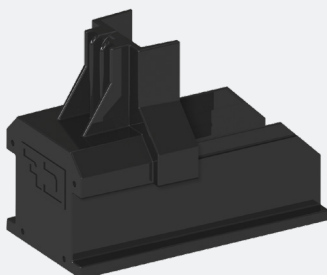
## 2. MOUNTING RAIL

- 30% stronger
- 30% lighter
- Suitable for larger roof spans



## 3. UNIVERSAL MODULE CLAMP

- Universal module clamp: suitable for all framed solar panels
- Can be used as centre clamp or as end clamp in combination with end cap
- Standard assembly
- Including bonding for the solar panels
- Available in grey and black



## 4. END CAP

- End cap holds the module clamp in its position
- Elongated end cap to allow for aesthetically pleasing finish
- Available in grey and black



## MOUNTING HAS NEVER BEEN EASIER

Solar panels are popular. The total capacity in Europe is growing and that growth will only continue in the coming years. This increases the odds of you having to climb up the roof to install panels. If you install solar panels with some regularity, it pays off to have access to a universal mounting system that allows you to do your job easily and reliably.

### ClickFit EVO; universal and fast

Esdec developed ClickFit EVO specifically for the professional solar installer. The mounting system consists of 4 components that can be used to mount all conventional solar panels on any tiled roof. Thanks to its unique properties, this mounting system allows for a mounting process that is twice as fast.

### Mounting method of your choice; hooks or screws

With the hook and click technique of ClickFit EVO, you can easily, quickly and safely install solar panels on a tiled roof. The ClickFit EVO Universal Roof Hook eliminates the need to drill holes in the roof construction, allowing the roof construction of the end user to stay fully intact. The universally adjustable roof hook fits all roof tile/batten combinations, and the ingenious water barrier smartly prevents leakage.

Do you prefer screwing into the truss? Use the ClickFit EVO Truss Hook. This system consists of a hook with a wider top plate that can be screwed onto a truss, tile or roof boarding. This offers flexibility in the placement and attachment of the truss hook. You can also combine the ClickFit EVO Universal Roof Hook and Truss Hook in a single project.

### Flexible and easy mounting process

If you work with ClickFit EVO, one tool is all you need. The revolutionary hook and click technique eliminates the need for other tools. Thanks to the smart design of this innovative mounting system, you can place the panels both in landscape or portrait orientation.

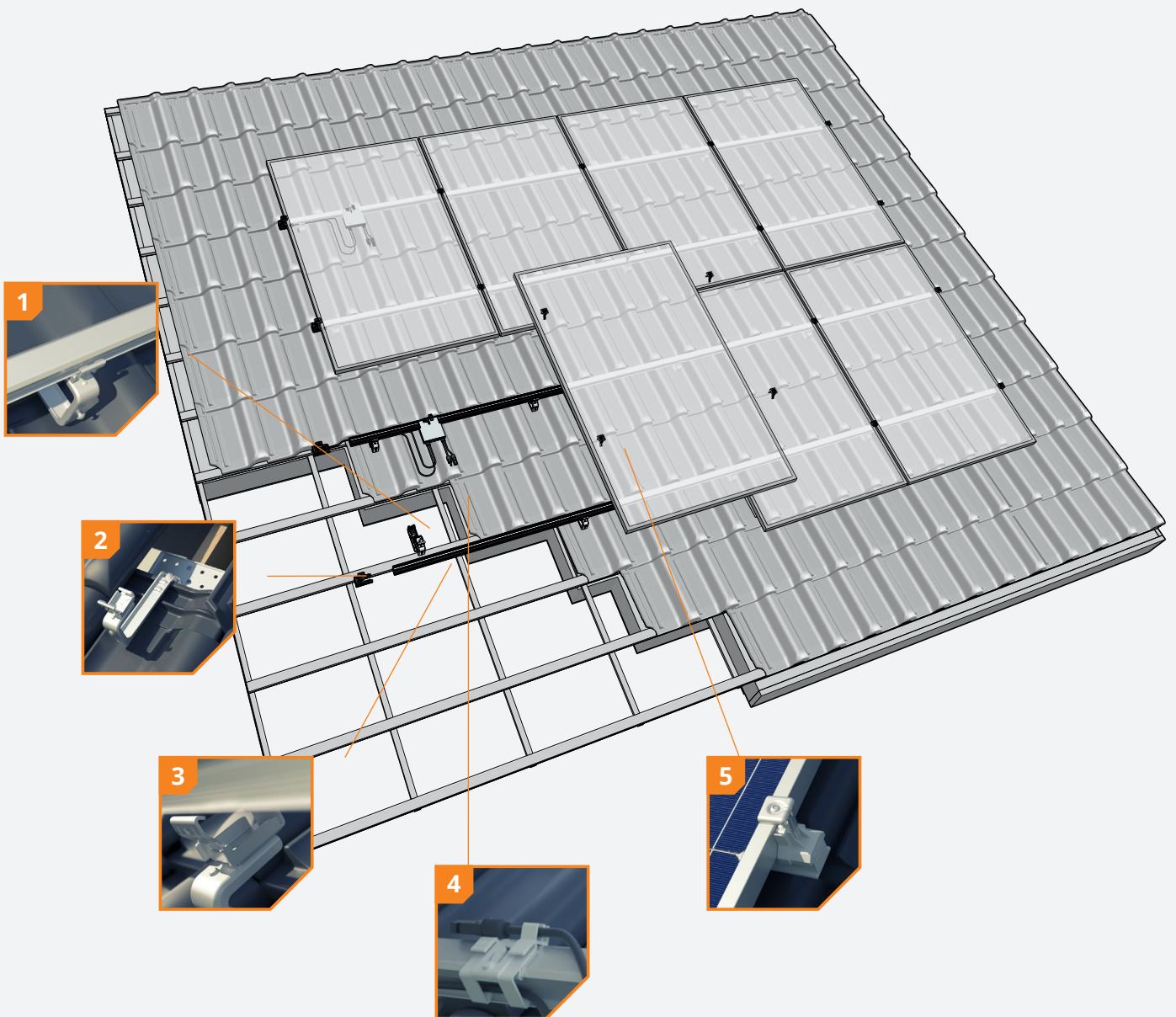
#### BENEFITS FOR THE INSTALLER

- ✓ Up to 40% quicker mounting
- ✓ Only 4 components
- ✓ Light and durable
- ✓ Only 1 tool necessary
- ✓ Up to 20 years' warranty

#### BENEFITS FOR THE END USER

- ✓ Rock solid basis for solar panels
- ✓ The roof stays intact
- ✓ Reliable
- ✓ Up to 20 years' warranty





**1 Universally adjustable**

Our universal Magnelis coated roof hook is infinitely adjustable in height and width, and can thus be used for all roof tile/ batten combinations.

**2 Screw option possible**

The ClickFit EVO Truss Hook has a screw plate. This allows the truss hook to be flexibly screwed to the roof.

**3 Fully renewed snap connection mechanism**

The ClickFit EVO Universal Roof Hook is equipped with a self-aligning snap connection mechanism, meaning that the mounting rail can always be easily installed from above

**4 Integrated cable management**

Cables and plugs can be neatly and safely stored away in both the roof hook and the cable clip. The optimiser can also easily be snapped onto the cable clip.

**5 Always the right size clamp**

The universal module clamp is suitable for all types of framed solar panels and can be used both as a centre clamp and – in combination with the end cap – as an end clamp.

## ROOF FASTENERS



ClickFit EVO Universal Roof Hook  
1008040



ClickFit EVO Truss Hook  
1008045

## MOUNTING RAIL



ClickFit EVO Mounting rail	
Mounting rail 1060mm	1008001
Mounting rail 2065mm	1008002
Mounting rail 3080mm	1008103
Mounting rail 4095mm	1008104
Mounting rail 5110mm	1008105
Mounting rail 6130mm	1008106
Mounting rail 3500mm	1008007

## MODULECLAMP & END CAP



ClickFit EVO Module Clamp Universal grey  
1008020



ClickFit EVO Module Clamp Universal black  
1008020-B



ClickFit EVO Mounting rail End cap grey  
1008060



ClickFit EVO Mounting rail End cap black  
1008060-B

## ACCESSORIES



ClickFit EVO Mounting rail Coupler  
1008061



ClickFit EVO Mounting rail Cable clip optimizer ready  
1008062



ClickFit EVO Roof hook Spacer  
1008063



ClickFit EVO Auxiliary set  
1008064

## Calculator

The new ClickFit EVO calculator is easy and quick to use. The clear, organised dashboard makes it easy for you to find saved and/or completed projects. If the roof situation is known, the calculator will automatically generate proposals based on that situation and the most commonly used solar panels. The calculator has also been optimised for Google Maps.

- Easy and quick to use
- Shows all of your projects in one clear overview
- Automatically generates proposals based on the roof situation at hand and the most commonly used solar panel
- Including auto-fill option
- Optimised for Google Maps



Go to [esdec.com/en/calculator/](https://www.esdec.com/en/calculator/)

## Warranty

ClickFit EVO meets all of the requirements and standards that currently apply. ClickFit EVO comes with a unique 20-year warranty, thus ensuring the system's quality

- Use of premium high tech materials
- Extensively tested
- BDA/KIWA certification
- 20 years' warranty







**QUICK  
RELIABLE  
INNOVATIVE**

**MAKE THE CONNECTION  
WITH ESDEC**

Esdec has developed, produced and supplied professional mounting systems for solar panels on roofs since 2004. ClickFit and FlatFix are inspired by installers who regularly place solar panels. Easy, quick and reliable installation with innovative, high-grade and sustainable mounting systems; that is what Esdec offers.

**Esdec**

Londenstraat 16  
7418 EE Deventer  
The Netherlands

☎ +31 850 702 000  
✉ [info@esdec.com](mailto:info@esdec.com)

30032020



[www.esdec.com](http://www.esdec.com)