

# ESDEC

INNOVATIVE MOUNTING SYSTEMS

## PROFESSIONAL ENTRY-LEVEL MOUNTING SYSTEM

**FLATFIX**

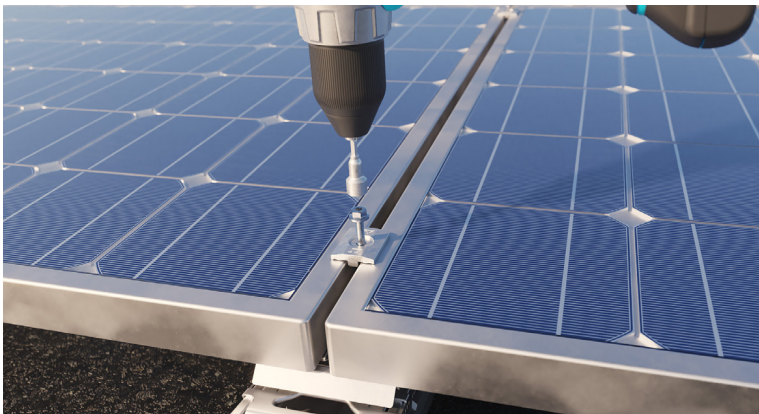
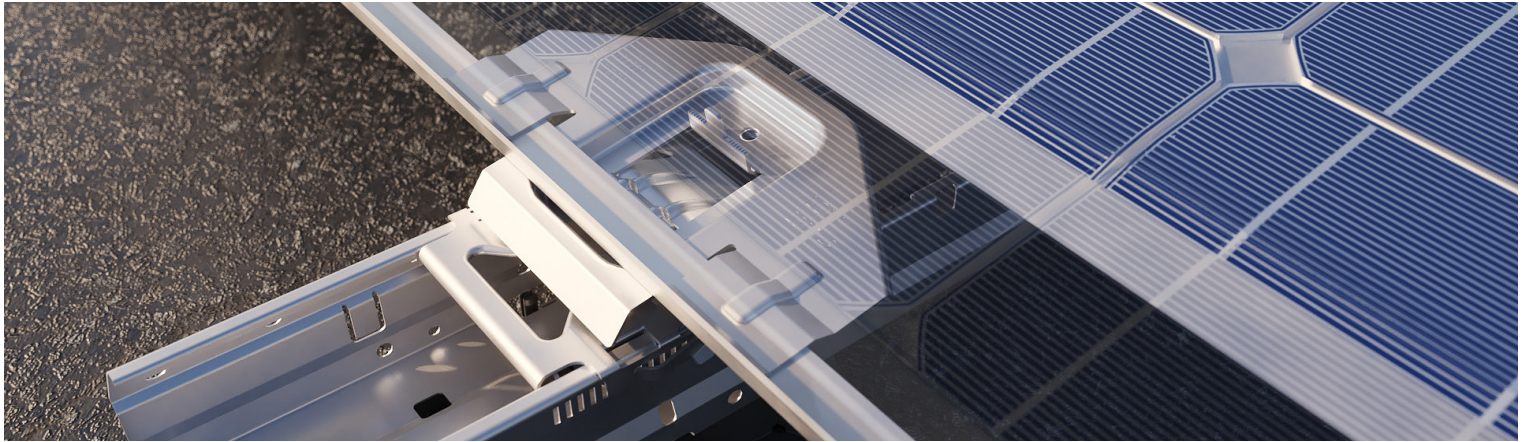
WAVE  
ENTRY

**ESDEC**  
INNOVATIVE MOUNTING SYSTEMS

[www.esdec.com](http://www.esdec.com)



# THE ADVANTAGES OF FLATFIX WAVE ENTRY



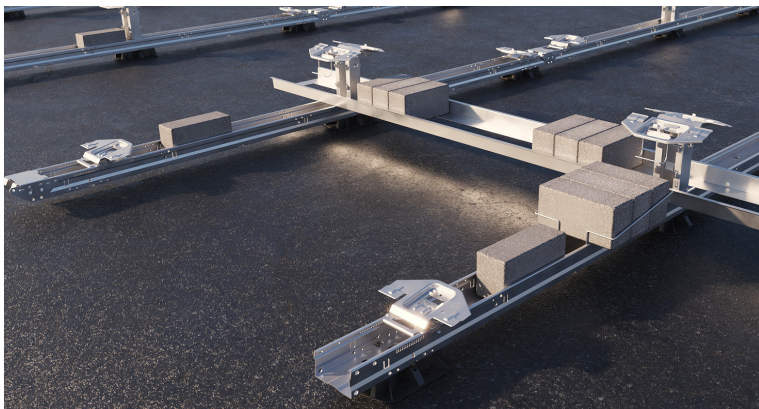
## QUICK AND EASY

- Quick, easy installation:
  - Pre-assembled base units
  - 1 tool approach
  - Minimal number of components
- Integrated cable management with cable bracket
- Easy to disassemble for maintenance



## ENTRY-LEVEL PROFESSIONAL MOUNTING SYSTEM

- For small & medium sized commercial projects
- Suitable for solar panels up to 1800mm (width up to 1150mm)
- Dual setup (east-west)
- Pitch length of 2300 mm
- Angle of inclination 10°



## SAFE & ROBUST

- Roof support with movable connectors
- Unique thermal decoupling prevents damage to roof material
- Integrated bonding
- Multiple ballast options for optimal weight distribution and maximum safety
- High coupling factor due to clamping on both panel sides





## PROFESSIONAL ENTRY-LEVEL MOUNTING SYSTEM FOR SMALL & MEDIUM COMMERCIAL PROJECTS

### Quick & easy installation

FlatFix Wave Entry can be installed easy and quickly thanks to the limited number of mounting steps and components. Align and extend the pre-assembled base units, click high base element into place, attach the adapter brackets to the high and low base, optionally place the ballast container and then mount the solar panel, using the unique panel clamping on the long side of the panel. Finalize the installation by attaching the module clamp to the high and low base so the panel is also clamped on the short side. This ensures that the system is not only bonded, but also produces a much better coupling factor which is beneficial for ballasting.

### Entry-level professional mounting system

FlatFix Wave Entry is a professional entry-level mounting system using unique pre-assembled base units. FlatFix Wave Plus, the other member in the Wave family, has coupled base units that can support 4 panels (4P). Wave Entry has a single base unit that can support 2 panels (2P), which is ideal for small & medium sized commercial projects. Panels up to 1800mm (width 1150mm) can be placed in dual set up.

### Safe & robust

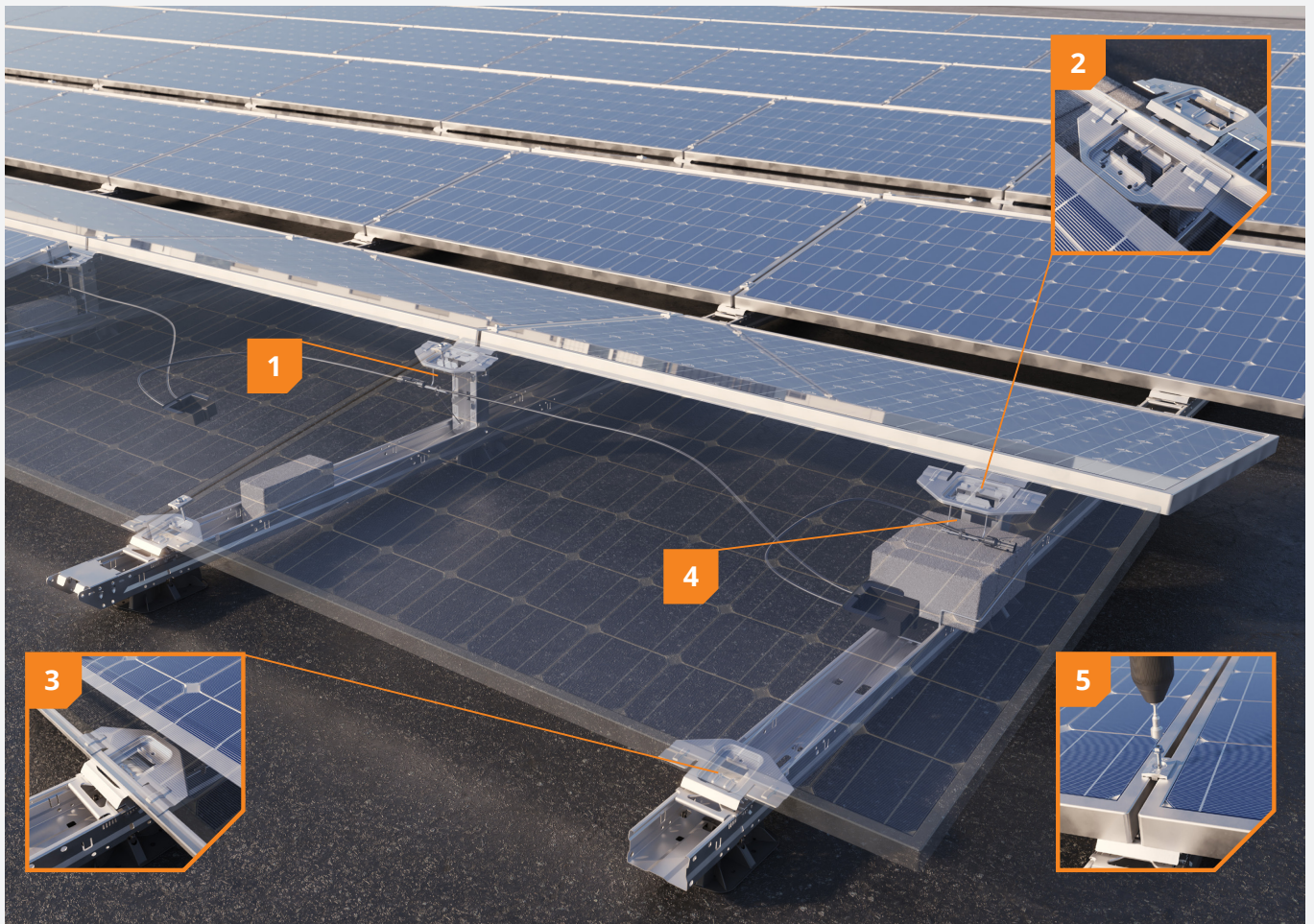
FlatFix Wave Entry has been tested extensively and it meets the strictest corrosion requirements. FlatFix Wave Entry is a high-quality mounting solution. It complies with the strictest international standards and comes with a 20-year warranty. A perfect system aimed at the professional installer who is looking for a price-competitive solution.

#### ADVANTAGES FOR THE INSTALLER

- ✓ Quick & easy installation
- ✓ Partly pre-assembled for reduced risk of installation errors
- ✓ High-quality mounting system
- ✓ Optimized for small to medium sized projects

#### BENEFITS FOR THE END USER

- ✓ Optimal efficiency with east-west arrangement and inclination angle of 10°
- ✓ No damage to roof material
- ✓ Tested and certified for reliability
- ✓ 20-year warranty



- 1** Pre-assembled units
- 2** Integrated bonding
- 3** Robust system
- 4** Cable management
- 5** Only 1 tool needed

Pre-assembled base units for 2 panels: easy to handle on the roof

Adapter bracket: Integrated bonding

Clamping on both the long and the short side of the solar panel

Quick and easy feeding and stowing of cables using the cable rack

Multi head screw T30 and SW10

## FlatFix Family

Within our family of flat roof mounting systems we have FlatFix Fusion, FlatFix Wave Entry and FlatFix Wave Plus.



FlatFix Fusion is focused on the benefits that installers and end-users are looking for in the residential sector, ideally suited for roofs with obstacles where flexibility and aesthetics are required.



FlatFix Wave Entry gives the smaller solar professional the opportunity to enter the commercial and industrial market: a high-quality system, optimized for small to medium sized projects.



FlatFix Wave Plus has been designed with the commercial and industrial sector in mind. FlatFix Wave Plus is suitable for large-scale, high-compliance projects with large, next-generation solar panels.



## BASE UNIT



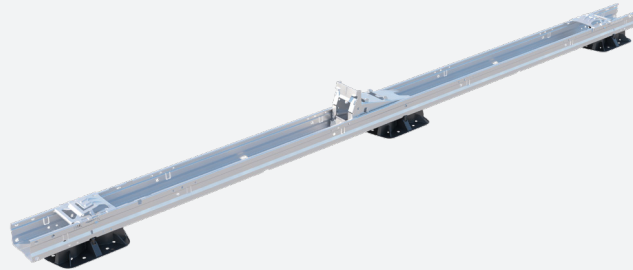
FlatFix Wave Dual Start Unit 2P DR1  
1009106



FlatFix Wave Adapter set  
1009104



FlatFix Wave Dual unit 2P DR1  
1009107



## ACCESSORIES



FlatFix Wave Wave Base plate  
1009120



FlatFix Wave Ballast bracket  
1009123



FlatFix Wave Cable bracket high base  
1009125



FlatFix Wave Ballast Holder set  
1009128



Esdec mounting screw M6 x 70mm  
1000670



FlatFix Wave Measuring bar  
1009141



Flatfix universal module clamp with bonding  
1003022



FlatFix Wave Module unlock tool  
1009142



FlatFix end clamp  
10043XX Available for frame thicknesses 30 to 50 mm  
Last two digits of article code correspond to  
frame thickness in mm

## Calculator

In the Esdec calculator you can manage and calculate all your projects, for both pitched and flat roofs. One platform with all Esdec mounting systems for the most reliable calculation of your project.

- Save time: manage all your projects on one platform
- One calculator for projects on pitched and flat roofs
- All calculations are based on extensive testing and the latest safety standards

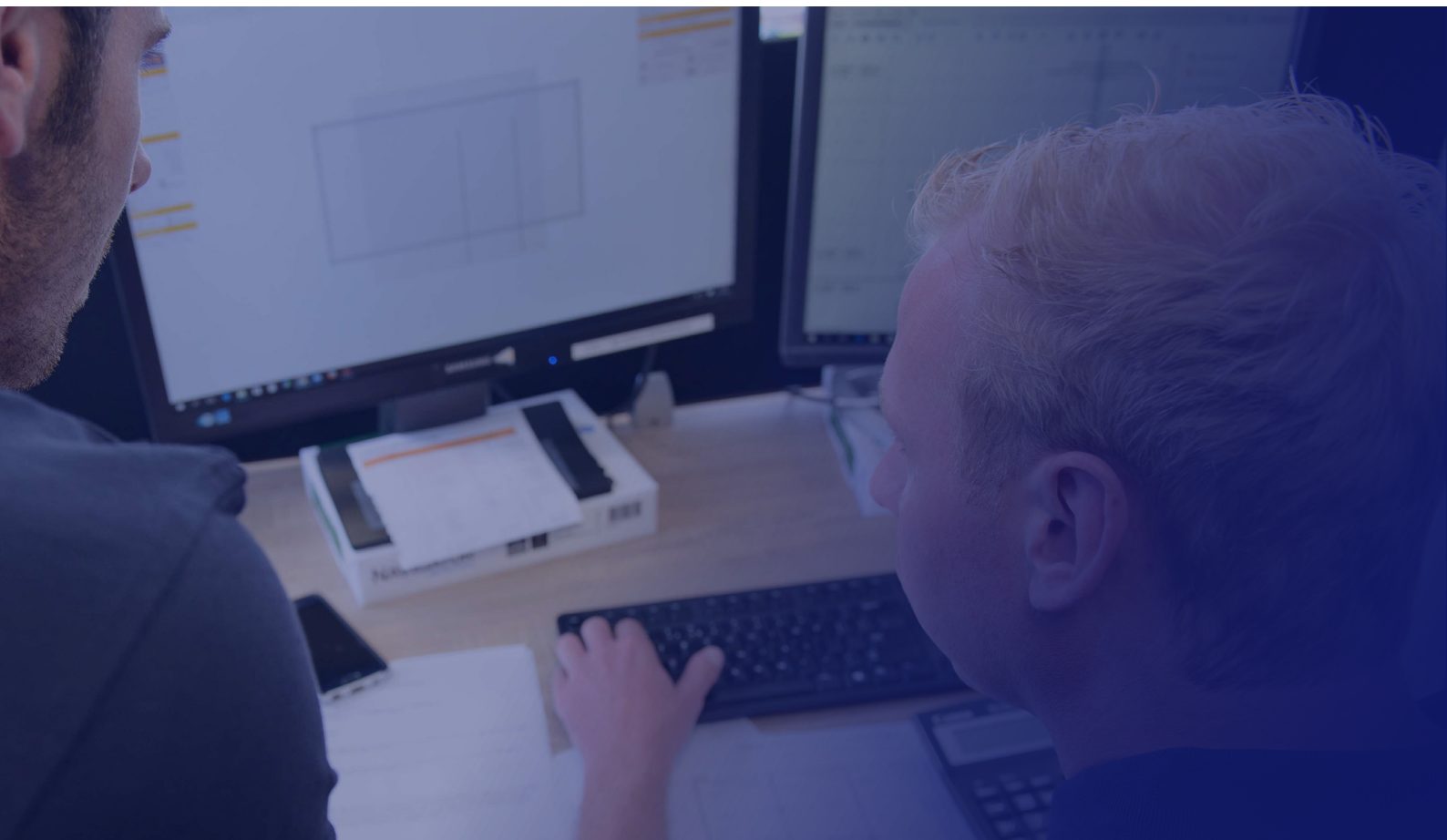


Go to [eu.esdec.com/en/calculator](http://eu.esdec.com/en/calculator)

## Warranty

- In accordance with latest insurance requirements
- Meets specifications of panel suppliers
- Complies with strictest corrosion requirements
- Extensively tested
- 20-year warranty





**QUICK  
RELIABLE  
INNOVATIVE**

Esdec has been developing, producing and supplying professional roof-mounting systems for solar panels since 2004. ClickFit and FlatFix are inspired by all installers who regularly install solar panels. Easy, quick, reliable installation using innovative, high-quality, durable mounting systems: Esdec makes it possible.

**Esdec**

Londenstraat 16  
7418 EE Deventer  
The Netherlands

☎ +31 850 702 000

✉ [info@esdec.com](mailto:info@esdec.com)

[www.esdec.com](http://www.esdec.com)