

**Our service  
starts today**

**&**

**Never ends,  
actually**



your foundation  
for solar progress



040723

---

# Your foundation for solar progress

CPX stands for **C**ommercial **P**roject **X**perts and is a European supplier of solar mounting systems. CPX is part of the Esdec Solar Group: the global leading provider of rooftop solar mounting systems. At CPX we believe in a smooth project process and thus provide support, assistance and help to you and your stakeholders. Whether it concerns a feasibility check, smart designs for complex situations or the supply of technical documentation. We see our company as your foundation for solar projects. Because only a good foundation is a guarantee for success. Before, during & long after the realisation of your project. When we start with our service, it never ends, actually. We create continuous value for your solar projects.

**Solar success, now and in the future!**

## Looking for a partner for your solar projects?

Get in touch with us to find out how we can be the foundation for your solar progress.

**1600000+**

Panels installed

**20+**

Countries in Europe

**750+**

MWp

**20+**

FTE Europe

### **Your partner, locally & globally**

We offer a smart and solid product: Wave. A well thought mounting system that can be used in various configurations. With our mounting systems we are flexible and can quickly adapt to new situations. And so robust they outlive your solar panels and your roof. Extensively tested so we give you a 20-year product warranty with confidence. At CPX we love to simplify things.

Developers and installers in more than 20 countries therefore rely on our Wave mounting systems. CPX has a mounting system for every situation, specific location and unique configuration.

### **Our service starts today & never ends, actually**

You need a partner that is bankable, certified & reliable, ofcourse. That's exactly what we bring to the table. But we don't stop there. We're also all about sustainability and flexibility. Sustainable as we prioritise sustainable operations and are committed to run things in an eco-friendly way. Flexible as we are aware that circumstances can change, we are quick on our feet to adapt and respond. And that's why we see ourselves as your foundation for solar projects.

You can rely on our service, from project start till the very end. Actually, it never ends. Our service goes on and on. From design support to installation training, from technical documentation to providing all the answers to all the questions you might have. Our team of technical Xperts is always there to rely on.

### **Minimise risks & maximise revenues**

We understand you want a quick insight into the possibilities on your roof. What about the roof load? But also in further elaborations of a design. How do you optimise the design on the roof, in terms of safety, efficiency and yield? We support you, with various scenarios, so you can pick the best option for your investment. For today and the days to come.

That's why, before getting started, it is important to carefully inspect the roof to minimise risks and maximise revenues. Every parameter, such as roof height, parapet height, roofing material, height differences, orientation to the north and much more must be accurately determined. Only then, detailed and smart project designs can be made. Precise and accurate. With the guarantee that everything is delivered on location. On time.



## Maximum efficiency on the roof comes in Wave

### Easy & fast to install

Our mountain system Wave is quick and error-free to install due to the small number of assembly steps. As we said before, we love to simplify things. Align and unfold the assembled base units. Click the high base element and stabilisers into place, and mount the solar panel using the unique panel lock. The entire assembly, including the solar panel, can be carried out without the need for tools.

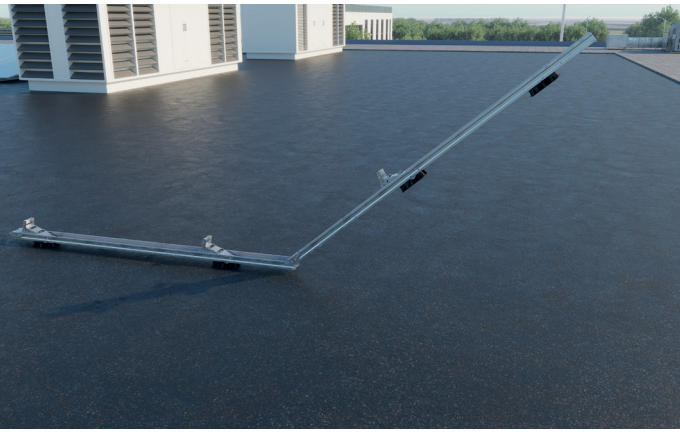
### Immediate results & continuous performance

Maximum efficiency on the roof; one of the starting points of Wave. Wave can be installed either dual or single, with the dual arrangement ensuring a balanced energy yield during the day and the single for maximum yield in the afternoon hours. In this way, Wave enables us to fill the roof

area as efficiently as possible. Today and tomorrow. This configuration is specially designed for large-scale projects and for the use of the latest solar panels. Due to the rigidity of the system, fields up to 40 by 40 metres can easily be laid.

### Minimisation risks & maximisation revenues

Each panel is optimally supported by two basic units. Because the panels are clamped on the long side, as prescribed by most panel manufacturers, we minimise the risk of panel damage. Our patented Wave system has been tested extensively. And it meets the strictest corrosion requirements and international standards. Because you need a partner that is reliable. Therefore, our high-quality mountain system comes with a 20-year warranty. That is what we call solar progress. It starts today and goes on and on...



## WE STRIVE FOR

# speed and convenience

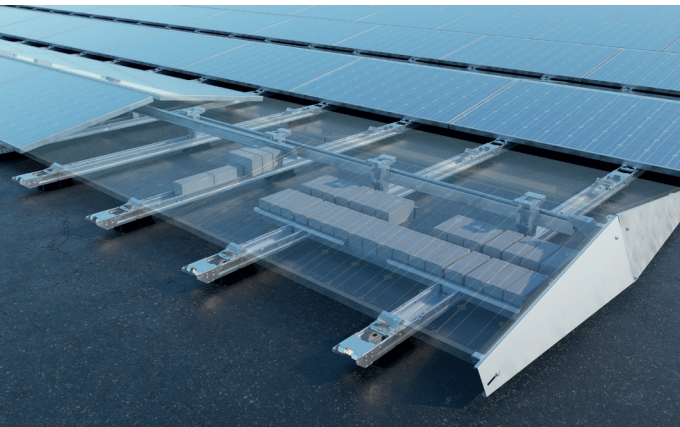
- Fast and easy installation
- Clickable assembled units
- No tools required
- Minimum number of components
- Maximum efficiency
- Integrated cable management
- Easily disassembled for maintenance and inspection



## WE BELIEVE IN

# maximum efficiency

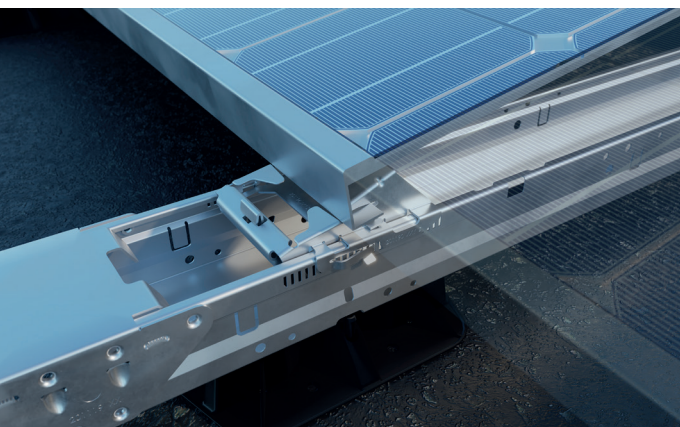
- Ideal for large-scale commercial projects
- Suitable for new generation larger ones solar panels
- Large panel fields (max. 40x40m / 1600m<sup>2</sup>)
- Suitable for panels up to 1150 mm wide
- Pitch of 2300 mm or 2460 mm
- Angle of inclination of panels 10 degrees
- For roof material concrete, bitumen, EPDM, PVC and TPO



## WE ARE

# reliable

- Easy installation by assembled units without screws
- Aerodynamic design
- Strong system due to horizontal and vertical clutch
- Best possible panel support, two units per panel
- Tested according to international standards



## WE LOVE

# minimising risks

- Roof supports with movable coupling
- Unique thermal decoupling prevents damage to roofing
- Integrated settlement
- Low point load
- Panel clamped on the long side, acc panel supplier specifications, minimises chance on panel damage
- Panels are relieved and don't form part of the carrying system
- Meets strictest corrosion requirements

## DUAL UNIT



### Wave Dual Unit 4P

1009100 Max. panel width: 990 - 1070mm  
1009150 Max. panel width: 1070 - 1150mm



### Wave Dual Start Unit 4P

1009101 Max. panel width: 990 - 1070mm  
1009151 Max. panel width: 1070 - 1150mm



### Wave Dual Unit 2P

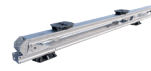
1009102 Max. panel width: 990 - 1070mm  
1009152 Max. panel width: 1070 - 1150mm



### Wave Stabilizer

1009110 2900mm  
1009111 3530mm  
1009114 4000mm

## SINGLE UNIT



### Wave Single Unit 3P

1009160 Max. panel width: 1070 - 1150mm



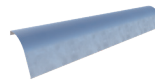
### Wave Single Unit 1P

1009161 Max. panel width: 1070 - 1150mm



### Wave Single Rear Deflector Clip

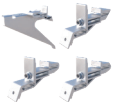
1009170



### Wave Single Rear Deflector

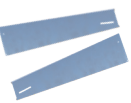
1009171 1525mm  
1009172 1700mm  
1009173 1875mm  
1009174 2075mm  
1009175 2225mm

## SYSTEM COMPONENTS



### Wave Wind Deflector Clamps

1009153



### Wave Wind Deflector Set

1009148 Max. panel width: 990 - 1070mm  
1009158 Max. panel width: 1070 - 1150mm



### Wave Base plate (extra)

1009120



### Wave Cable Bracket Stabilizer

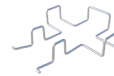
1009124

## BALLAST OPTIONS



### Wave Ballast Bracket

1009123



### Wave Ballast Bracket Perimeter

1009126



### Wave Ballast Tray

1009129



### Wave Ballast Tray Extender

1009130

## ACCESSORIES



### Wave Module unlock tool

1009142



### Wave Measuring bar 2500mm

1009143



### Wave Spacer Tool

1009144



[www.cpx.eu](http://www.cpx.eu)