




DO NOT  
SCALE FROM  
THIS PRINT

1.  REPRESENTS A CRITICAL DIMENSION.
2. MINIMUM PUSHOUT FORCE: 5 LB.
3.  COPLANARITY: .004[0.10] = POS 02 THRU 26  
.006[0.15] = POS 27 THRU 50
4. TUBE PACKAGE ONLY POSITIONS -04 THRU -50;  
LAYER PACKAGE POSITIONS -02 THRU -03.
5. MAXIMUM CUT FLASH TO BE: .010 (NO FLASH EXTENDING BELOW  
LEADS OR IN HOLES OF BODY).
6.  MAXIMUM PIN HEIGHT VARIATION: .003[0.08]  
FROM PIN TO PIN AND ROW TO ROW, MUST BE  
MEASURED BETWEEN ADJACENT PINS.
7. PINS CAN BE ORIENTED IN ANY DIRECTION;  
BOTH ROWS MUST FACE SAME WAY.
8. DIMENSION TO BE MEASURED AT BEND.
9. MIXED PIN ORIENTATION ACCEPTABLE.

SFMC-1XX-XX-XX-D-XX

No OF POSITIONS

ALL POSITIONS AVAILABLE  
-02 THRU -50  
(USE BODY: SFMC-50-D)

## — OPTIONS

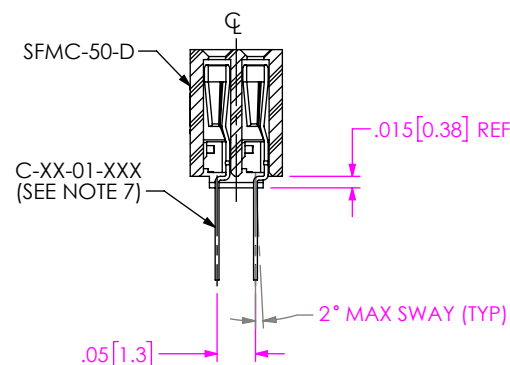
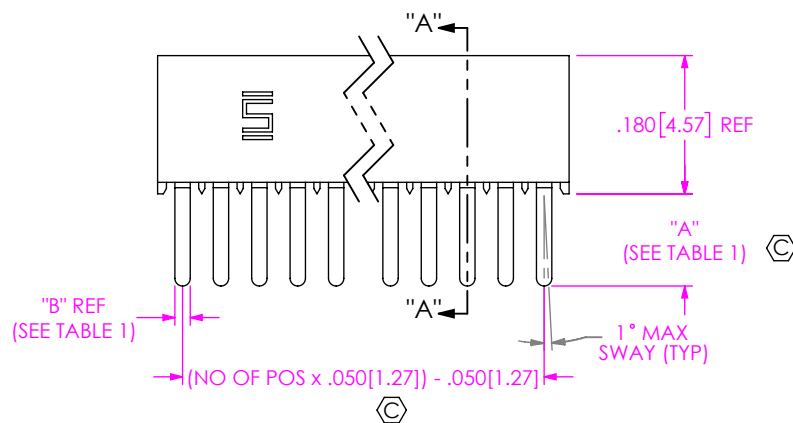
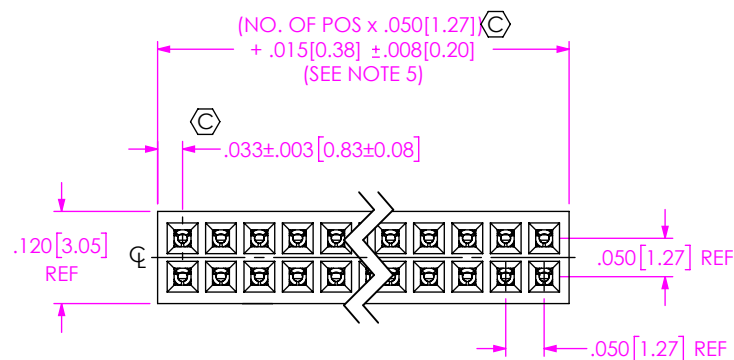
(LEAVE BLANK FOR STANDARD  
-P: PICK AND PLACE PAD (SEE FIG 3, SHT 2)  
(USE PPP-02) (5 POSITION MINIMUM)  
-K: POLYIMIDE FILM PAD (.005[0.13] THICKNESS)  
(SEE FIG 4, SHT 2) (USE K-DOT-.157-.250-.005)  
(4 POSITION MINIMUM)  
-TR: TAPE & REEL (SEE SHT 3)

## BODY SPECIFICATION

-D: DOUBLE ROW

## — PLATING SPECIFICATION

- S: 30µ" SELECTIVE GOLD IN CONTACT AREA,  
MATTE TIN ON TAIL
- F: 3µ" SELECTIVE GOLD IN CONTACT AREA,  
MATTE TIN ON TAIL
- H: 30µ" GOLD IN CONTACT AREA, 3µ" GOLD ON TAIL  
(ONLY AVAILABLE ON -02, -L2 & -T2 LEAD STYLE)
- L: 10µ" SELECTIVE GOLD IN CONTACT AREA,  
MATTE TIN ON TAIL
- SM: 30µ" SELECTIVE GOLD IN CONTACT AREA,  
MATTE TIN ON TAIL
- FM: 3µ" SELECTIVE GOLD IN CONTACT AREA,  
MATTE TIN ON TAIL



SECTION "A"-"A"

FIG 1  
-X1: THROUGH HOLE

TABLE 1		
SUFFIX	TAIL LENGTH "A"	TAIL WIDTH "B"
-X1	.120[3.05]	.020[0.51]
-X3	.075[1.91]	.016[0.41]

UNLESS OTHERWISE SPECIFIED,  
DIMENSIONS ARE IN INCHES.

TOLERANCES ARE:

DECIMALS	ANGLES
----------	--------

XX: +.01 [.3]

.XXX:  $\pm .005$  [.13]

.XXX:  $\pm 0.0020$  [.051]

---

PROPRIETARY NOTE

THIS DOCUMENT CONTAINS CONFIDENTIAL AND PROPRIETARY INFORMATION AND ALL DESIGN, MANUFACTURING, REPRODUCTION, USE, PATENT RIGHTS AND SALES RIGHTS ARE EXPRESSLY RESERVED BY SAMTEC, INC. THIS DOCUMENT SHALL NOT BE DISCLOSED, IN WHOLE OR PART, TO ANY UNAUTHORIZED PERSON OR ENTITY NOR REPRODUCED, TRANSFERRED OR INCORPORATED IN ANY OTHER PROJECT IN ANY MANNER WITHOUT THE EXPRESS WRITTEN CONSENT OF SAMTEC, INC.

**MATERIAL:**

DO NOT SCALE DRAWING

SHEET SCALE: 4:1

BODY: LCP UL 94V-O, COLOR: BLACK  
CONTACTS: C-44 & C-61: #25 BeCu, 1/2 HARD  
C-119: PHOSPHOR BRONZE 521

DESCRIPTION:

520 PARK EAST BLVD, NEW ALBANY, IN 47150  
PHONE: 812-944-6733 FAX: 812-948-5047  
e-Mail [info@SAMTEC.com](mailto:info@SAMTEC.com) code 55322

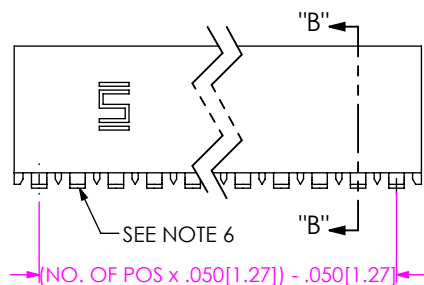
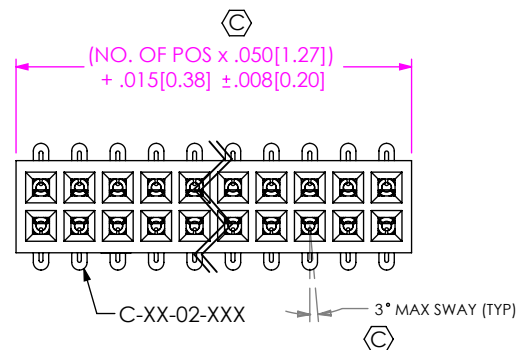
DESCRIPTION:  
.050 x .050 CUTTABLE SOCKET STRIP DOUBLE ROW ASSEMBLY

DWG. NO.

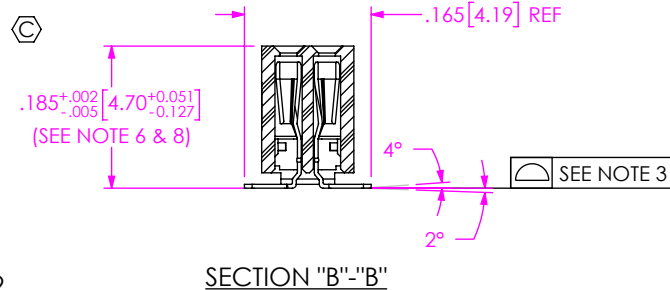
SFMC-1XX-XX-XX-D-XX

BY: BRATCHER 10/5/94

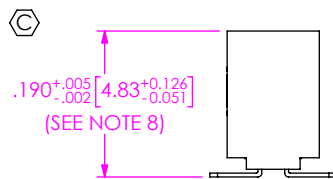
SHEET 1 OF 3



**FIG 2**  
-X2: SURFACE MOUNT  
(SAME AS FIG 1, DIFFERENT AS SHOWN)



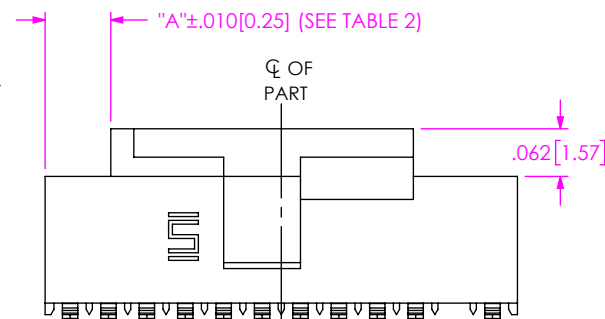
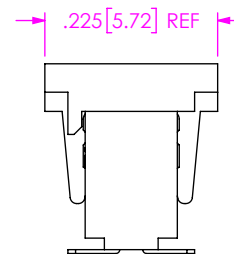
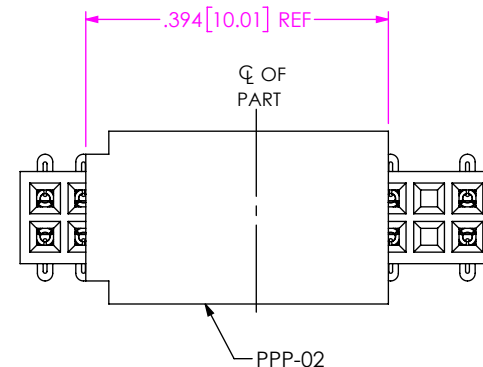
**SECTION "B"-"B"**



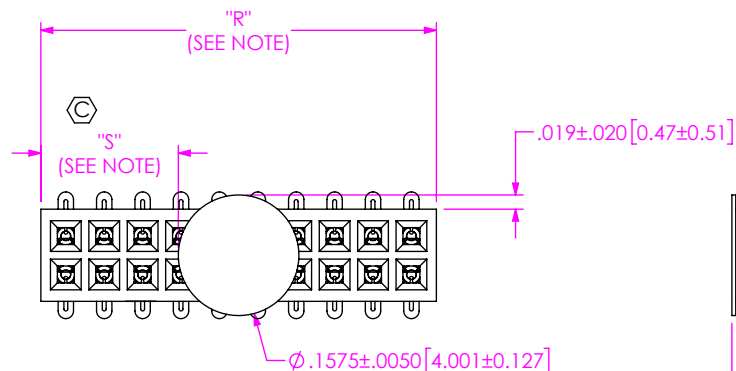
**IN-PROCESS**  
-X2

NOTE: DIMENSION APPLIES PRIOR TO RE-PRESS, SEE SECTION "B"-"B" FOR FINISHED DIMENSION

TABLE 2	
POS.	"A"
ODD	{(No. OF POS x .050[1.27])/2} - .1895[4.813]
EVEN	{(No. OF POS x .050[1.27])/2} - .2145[5.448]

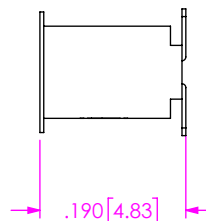


**FIG 3**  
-P: PICK AND PLACE PAD  
( 5 POSITION MINIMUM)  
( PAD MAY BE ORIENTED IN EITHER DIRECTION)  
(SAME AS FIG 1, DIFFERENT AS SHOWN)



**FIG 4**  
-K: POLYIMIDE FILM PAD  
(SAME AS FIG 1, DIFFERENT AS SHOWN)

NOTE: "R" = USED MEASURED DIMENSION REF  
"S" = {"R" - .1575[4.000]}/2±.020[0.51]



**PROPRIETARY NOTE**  
THIS DOCUMENT CONTAINS CONFIDENTIAL AND PROPRIETARY INFORMATION AND ALL DESIGN, MANUFACTURING, REPRODUCTION, USE, PATENT RIGHTS AND SALES RIGHTS ARE EXPRESSLY RESERVED BY SAMTEC, INC. THIS DOCUMENT SHALL NOT BE DISCLOSED, IN WHOLE OR PART, TO ANY UNAUTHORIZED PERSON OR ENTITY NOR REPRODUCED, TRANSFERRED OR INCORPORATED IN ANY OTHER PROJECT IN ANY MANNER WITHOUT THE EXPRESS WRITTEN CONSENT OF SAMTEC, INC.

DO NOT SCALE DRAWING

SHEET SCALE: 4:1

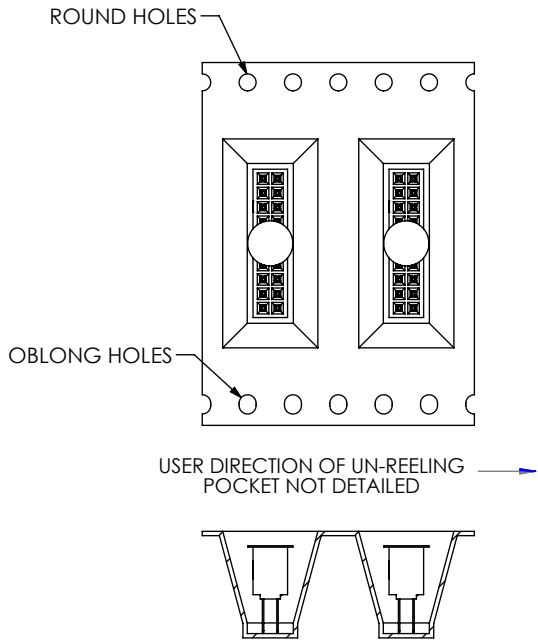
**samtec**

520 PARK EAST BLVD, NEW ALBANY, IN 47150  
PHONE: 812-944-6733 FAX: 812-948-5047  
e-Mail: info@SAMTEC.com code 55322

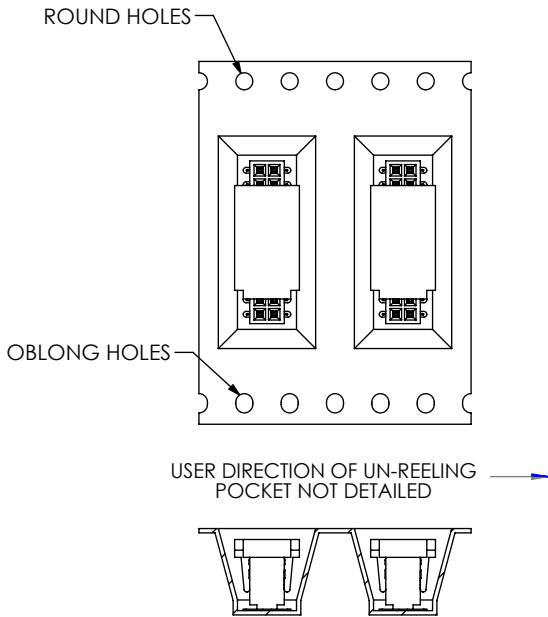
DESCRIPTION:  
.050 x .050 CUTTABLE SOCKET STRIP DOUBLE ROW ASSEMBLY

DWG. NO.  
**SFMC-1XX-XX-XX-D-XX**

BY: BRATCHER 10/5/94 SHEET 2 OF 3

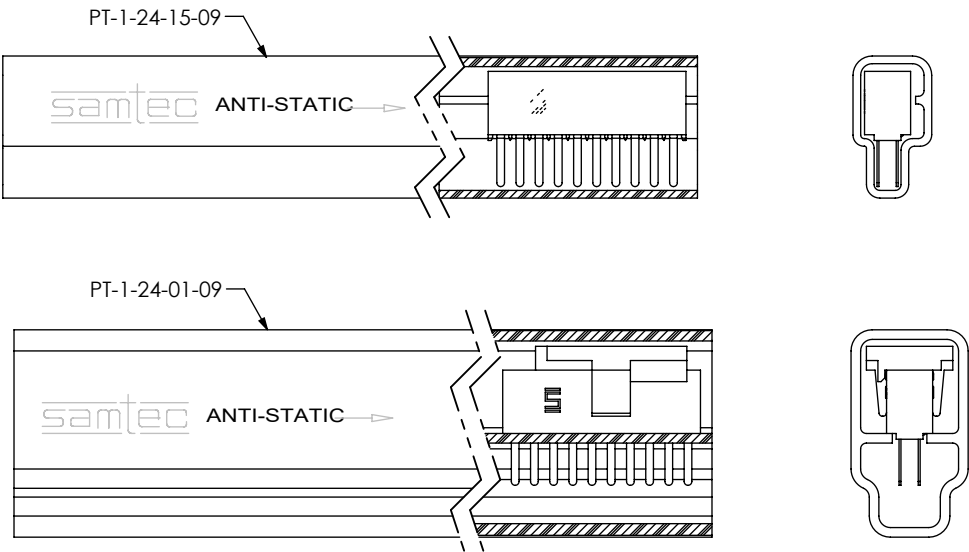


PACKAGING VIEW  
-TR: TAPE AND REEL THROUGH HOLE



PACKAGING VIEW  
-TR: TAPE AND REEL SURFACE MOUNT

PACKAGING VIEW  
PACKAGE PARTS IN TUBES AS SHOWN



NOTES:  
1. MIXED PIN ORIENTATION ACCEPTABLE.

TABLE 3 (SEE NOTE 4)		
LEAD STYLE	PACKAGING TUBE	PLUG
-X1, -X3, -X3-K	PT-1-24-15-09	TP-12
-X2	PT-1-24-14-09	TP-24-02
-X2-K	PT-1-24-14-09	TP-24-02
-X2-P	PT-1-24-01-38	TP-24
-X1-K	PT-1-24-15-09	TP-12
-X1-P, -X3-P	PT-1-24-01-09	TP-24

c:\enterprisevault\DWG\MISC\MKTG\SFMC-1XX-XX-XX-D-XX-MKT.SLDDRW

**PROPRIETARY NOTE**  
THIS DOCUMENT CONTAINS CONFIDENTIAL AND PROPRIETARY INFORMATION AND ALL DESIGN, MANUFACTURING, REPRODUCTION, USE, PATENT RIGHTS AND SALES RIGHTS ARE EXPRESSLY RESERVED BY SAMTEC, INC. THIS DOCUMENT SHALL NOT BE DISCLOSED, IN WHOLE OR PART, TO ANY UNAUTHORIZED PERSON OR ENTITY NOR REPRODUCED, TRANSFERRED OR INCORPORATED IN ANY OTHER PROJECT IN ANY MANNER WITHOUT THE EXPRESS WRITTEN CONSENT OF SAMTEC, INC.

DO NOT SCALE DRAWING

SHEET SCALE: 1.5:1

**samtec**

520 PARK EAST BLVD, NEW ALBANY, IN 47150  
PHONE: 812-944-6733 FAX: 812-948-5047  
e-Mail info@SAMTEC.com code 55322

DESCRIPTION:  
.050 x .050 CUTTABLE SOCKET STRIP DOUBLE ROW ASSEMBLY

DWG. NO.  
**SFMC-1XX-XX-XX-D-XX**

BY: BRATCHER 10/5/94 SHEET 3 OF 3