








Roslyn

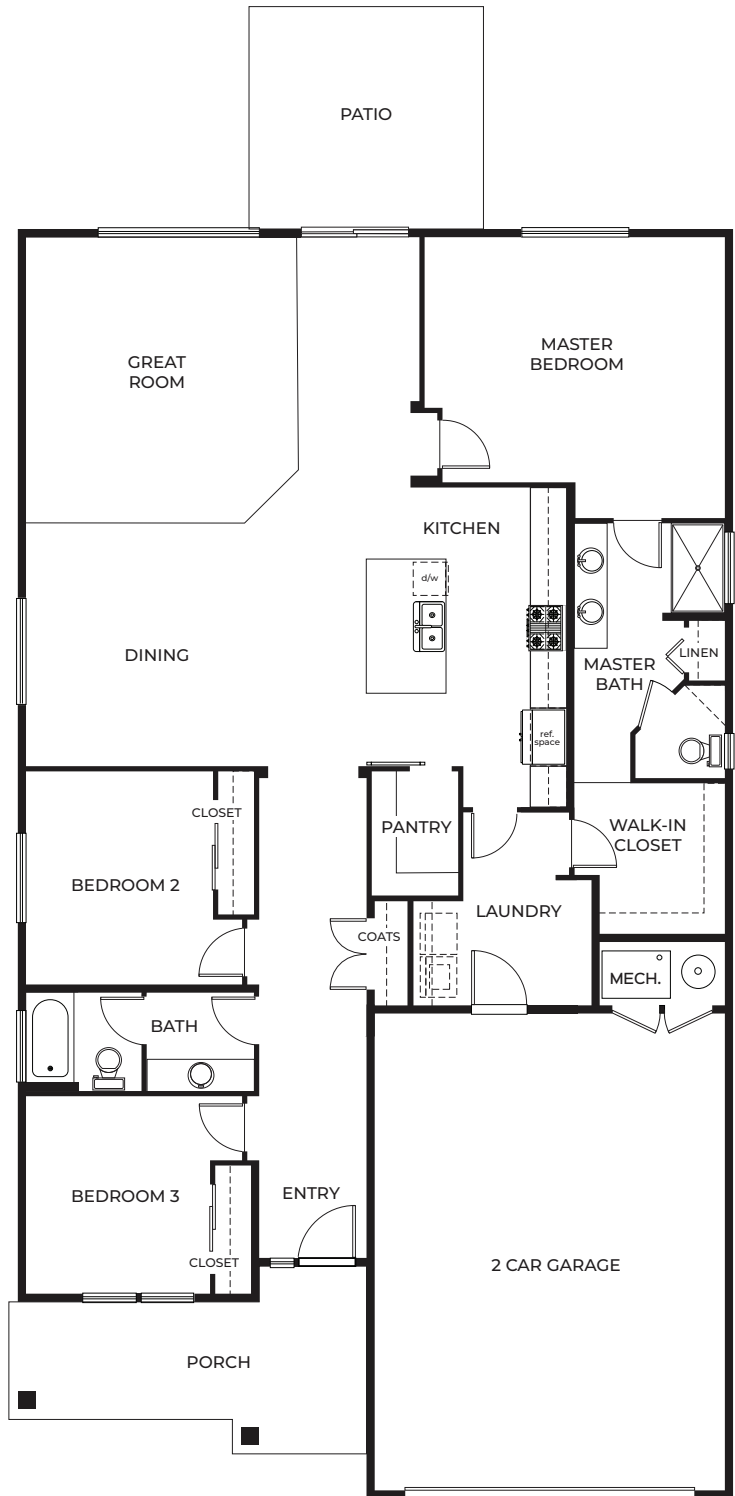
Plan Specifications

-  2,033 SQ FT
-  1 Story
-  3 Beds
-  2 Bath
-  2 Car, Front Entry Garage

Specific Area Dimensions

- Great Room ----- 22' x 16'
- Dining Room ----- 13'-6" x 13'-7"
- Kitchen ----- 11'-3" x 17'-11"
- Master Bedroom ---- 16'-10" x 15'-9"
- Bedroom 2 ----- 10'-6" x 12'
- Bedroom 3 ----- 11'-1" x 12'-1"
- Garage ----- 20'-6" x 28'-1"

*These measurements are for informational purposes only. See blueprints for specific details.



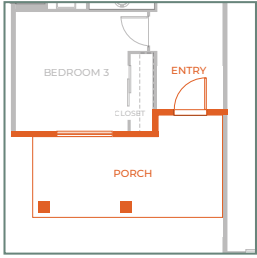
info@greenstonehomes.com | greenstonehomes.com

Greenstone™ reserves the right to make changes or modifications to plans, elevations, specifications, materials, features, colors, and other guidelines without notice. Prices and product availability are subject to change. All maps, images, and renderings are conceptual and are not to scale.

CS-HPF-0512.26



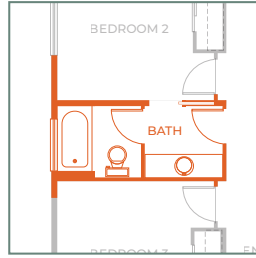
Additional Options



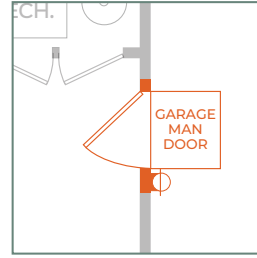
Roslyn B



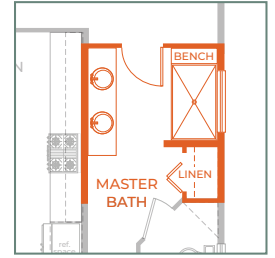
Appliance Pantry



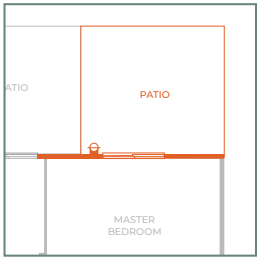
Pocket Door at Guest Bath



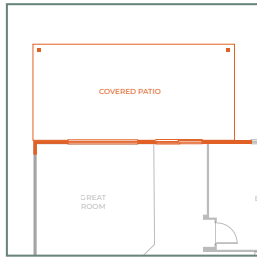
Garage Man Door



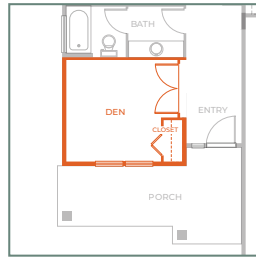
6' Master Shower with Bench Seat



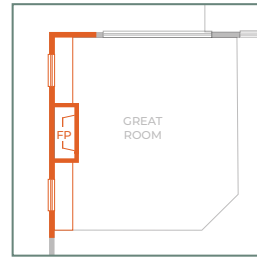
Master Slider with Patio



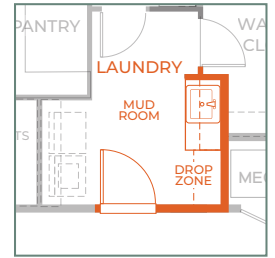
Covered Back Patio (24' X 12')



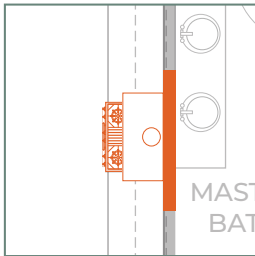
Den with French Door



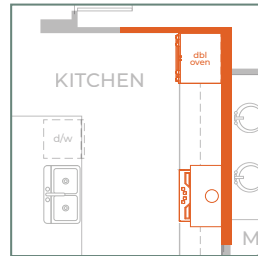
Fireplace with Built-ins



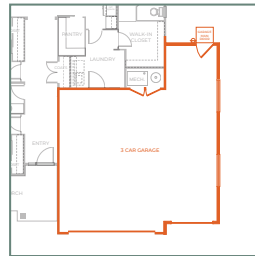
Laundry Sink, Cabinets and Bench



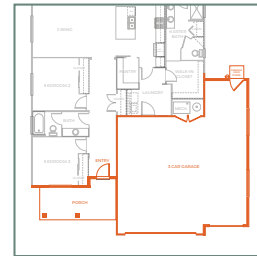
Kitchen with Range hood



Kitchen with Wall Oven, Range hood and Cook-top



3 Car Garage



Contemporary Elevation with 3 Car Garage



3 Car Garage Craftsman Elevation



2 Car Garage Farmhouse Elevation



3 Car Garage Farmhouse Elevation

Limited Color Schemes Available

Limited Color Schemes Available