






# Roslyn

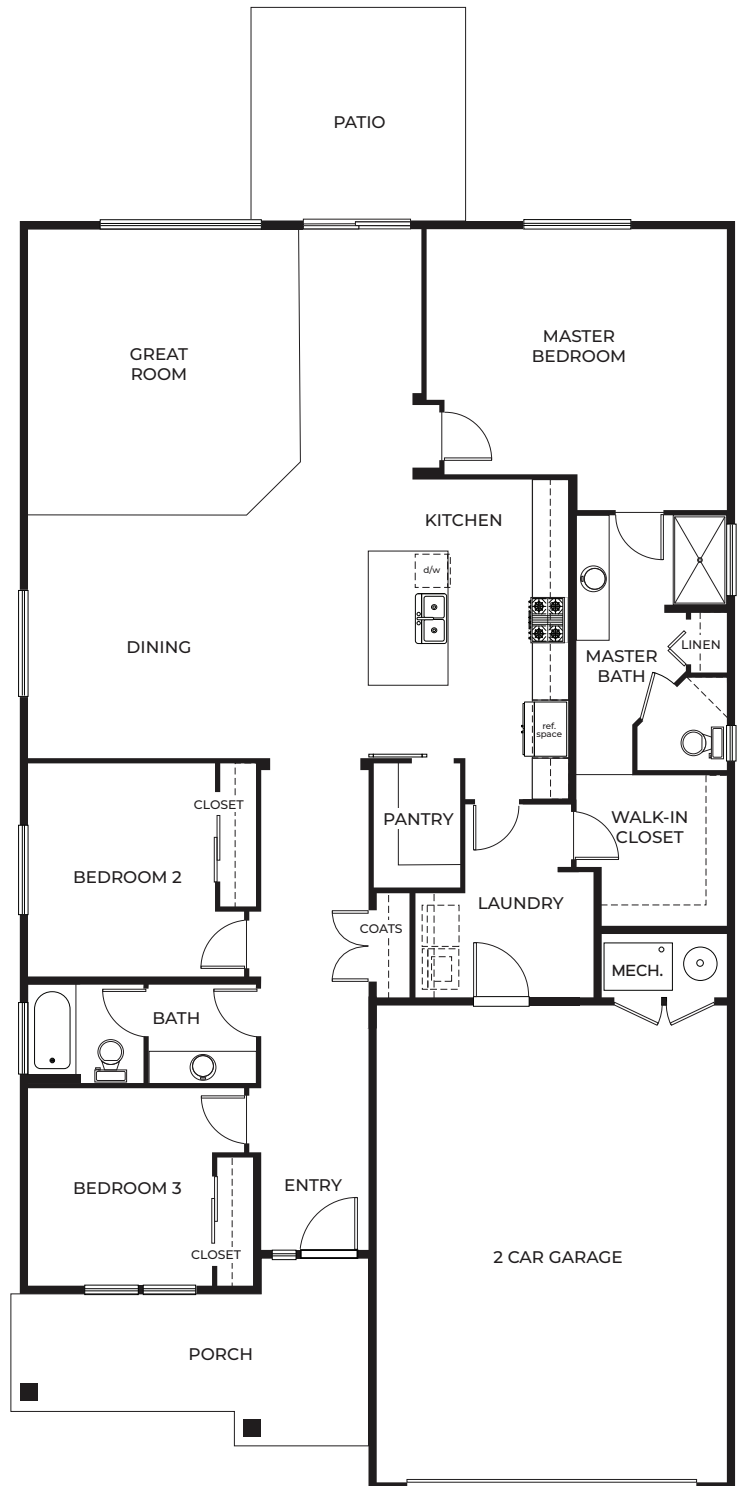
## Plan Specifications

-  2,033 SQ FT
-  1 Story
-  3 Beds
-  2 Bath
-  2 Car, Front Entry Garage

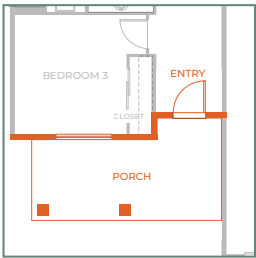
## Specific Area Dimensions

- Great Room ----- 22' x 16'
- Dining Room ----- 13'-6" x 13'-7"
- Kitchen ----- 11'-3" x 17'-11"
- Master Bedroom ----- 16'-10" x 15'-9"
- Bedroom 2 ----- 10'-6" x 12'
- Bedroom 3 ----- 11'-1" x 12'-1"
- Garage ----- 20'-6" x 28'-1"

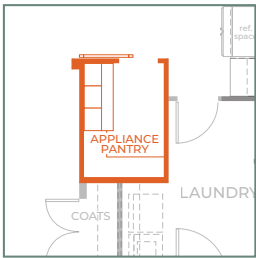
•These measurements are for informational purposes only. See blueprints for specific details.



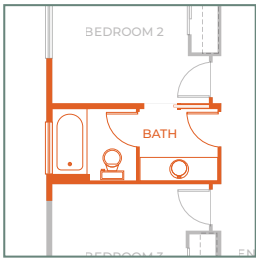
Additional Options



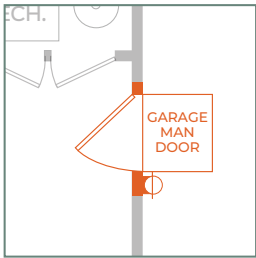
Roslyn B



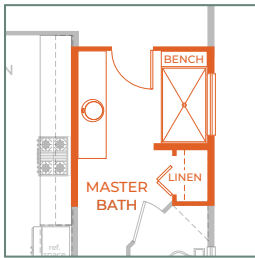
Appliance Pantry



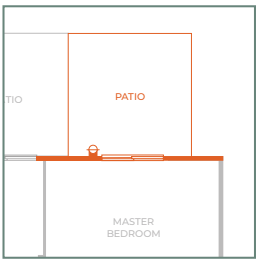
Pocket Door at Guest Bath



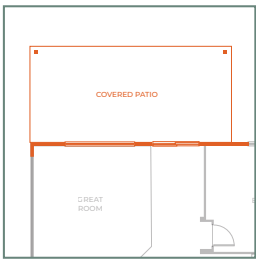
Garage Man Door



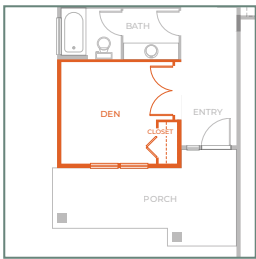
6' Master Shower with Bench Seat



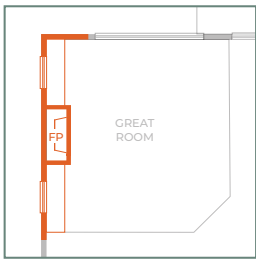
Master Slider with Patio



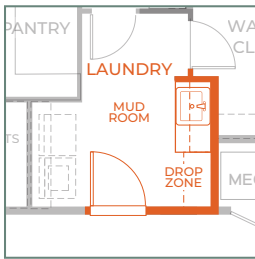
Covered Back Patio (24' X 12')



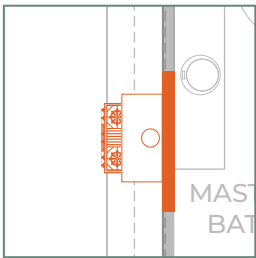
Den with French Door



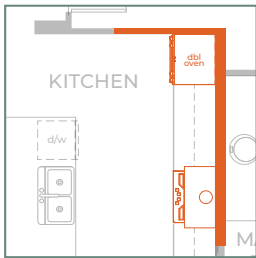
Fireplace with Built-ins



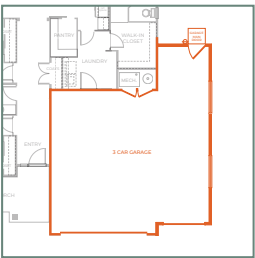
Laundry Sink, Cabinets and Bench



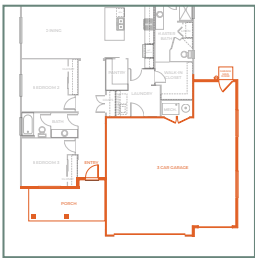
Kitchen with Range hood



Kitchen with Wall Oven Range hood and Cook-top



3 Car Garage



Roslyn B with 3 Car Garage



3 Car Garage Elevation



Roslyn B Elevation

Limited Color Schemes Available