



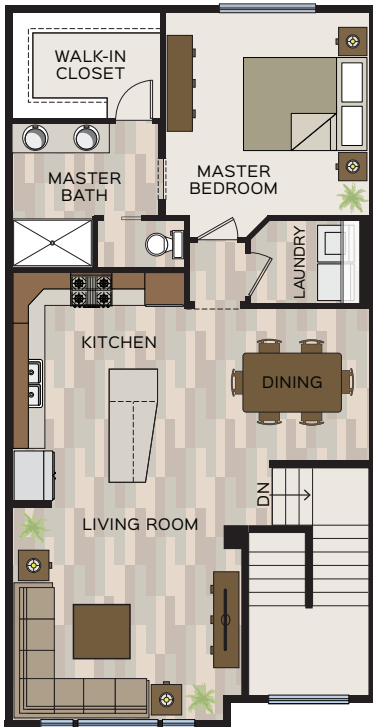
Unit A

River Crossing East Townhomes

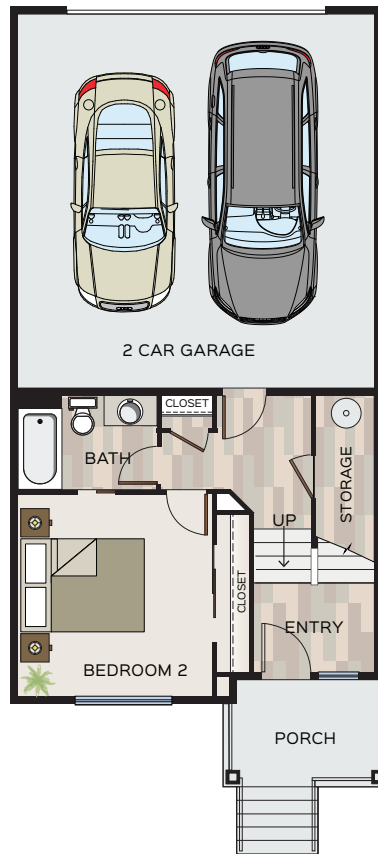
1,362 SF 2 Bed 2 Bath 2 Car Garage

1816 N. Harvest Parkway
in the River District Community

TBD



MAIN LEVEL



ENTRY LEVEL

Included in this Home

- Beautiful views overlooking Orchard Park
- Steps from the all new retail commercial
- Trail access to 3 miles of Centennial Trail frontage
- Full duct system with a gas forced air furnace
- Energy Recovery Ventilator (ERV)
- Air conditioning rough-in (coil and line set)
- Quartz countertops in the kitchen and master bath
- Upgraded group B plank flooring
- Full height kitchen back splash
- Tiled shower walls in master bath
- Upgraded to hickory cabinets
- Double sink in master bath



Jeremy Nichols

509.939.5579 | riverdistrict@greenstonehomes.com



Greenstone

ENRICHED LIVING. LASTING VALUE.

RCK-SH-09.24.20