



Springfield B

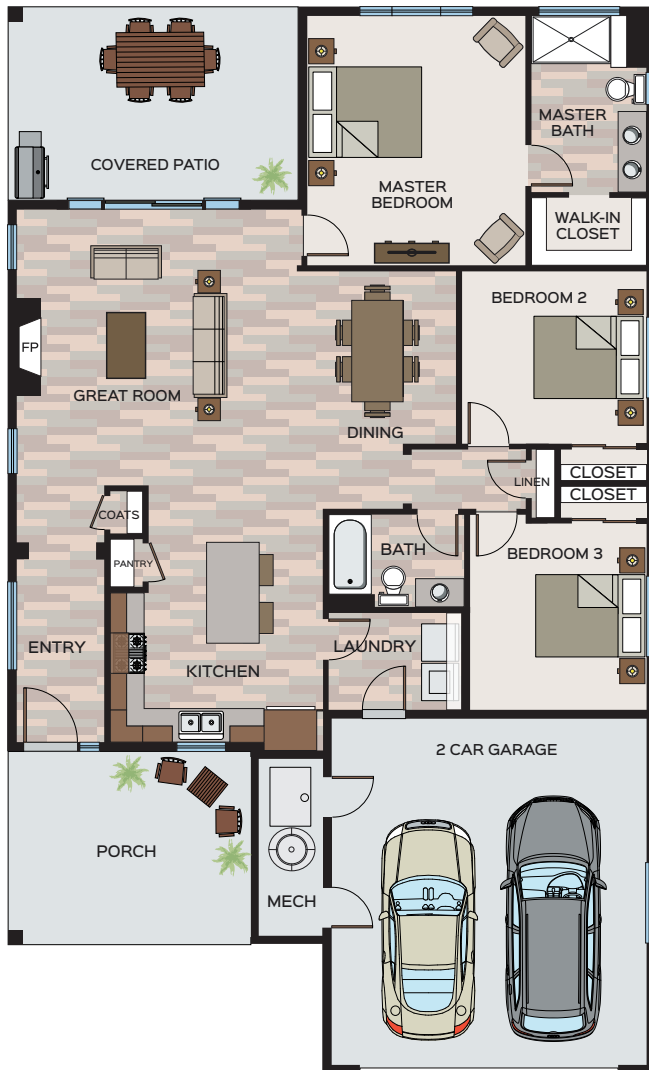
1,586 SF 3 Bed 2 Bath 2 Car Garage

20911 E. Thompson Ave
in the River District Community

\$537,000

Included in this Home

- 3 miles of Centennial Trail frontage
- Walkable to NoLL Town Center - restaurants, coffee and retail
- Nearly 20 acres of community parks
- Smart home technology with video doorbell
- B.I.B. insulation with solar panels on every home
- E.R.V. air circulation system
- Covered back patio on corner lot
- Gas furnace with gas tankless water heater
- Quartz countertops with 42" upgraded hickory cabinets
- Upgraded appliance package with gas stove
- Gas fireplace with tile surround



MAIN FLOOR



Jeremy Nichols

509.939.5579 | riverdistrict@greenstonehomes.com



Greenstone ENRICHED LIVING. LASTING VALUE.

ROX-R-0123