








Roslyn

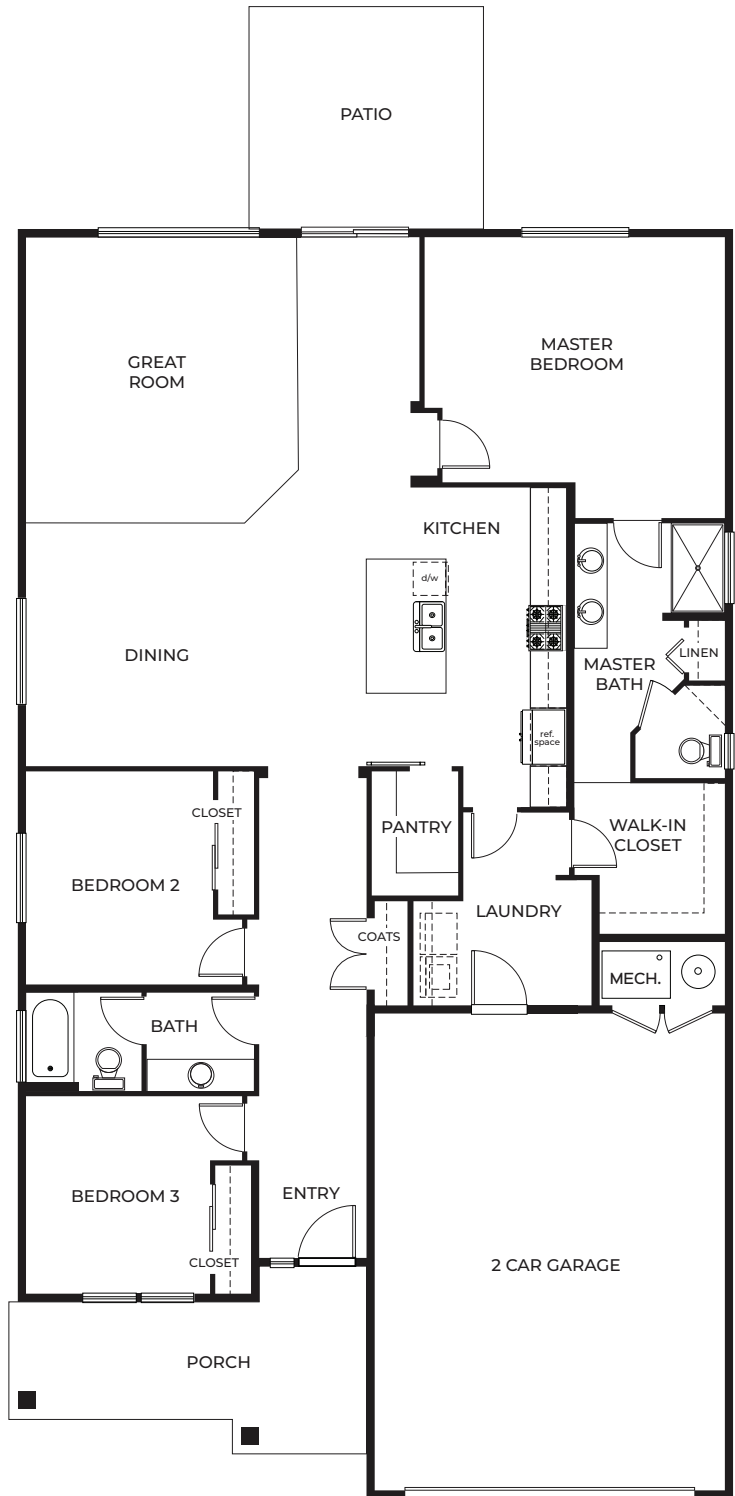
Plan Specifications

-  2,033 SQ FT
-  1 Story
-  3 Beds
-  2 Bath
-  2 Car, Front Entry Garage

Specific Area Dimensions

- Great Room ----- 22' x 16'
- Dining Room ----- 13'-6" x 13'-7"
- Kitchen ----- 11'-3" x 17'-11"
- Master Bedroom ---- 16'-10" x 15'-9"
- Bedroom 2 ----- 10'-6" x 12'
- Bedroom 3 ----- 11'-1" x 12'-1"
- Garage ----- 20'-6" x 28'-1"

*These measurements are for informational purposes only. See blueprints for specific details.



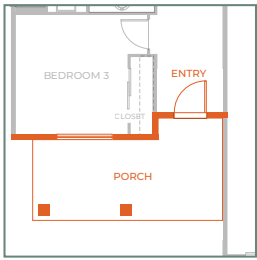
info@greenstonehomes.com | greenstonehomes.com

CS-HPF-02.23.26

Greenstone™ reserves the right to make changes or modifications to plans, elevations, specifications, materials, features, colors, and other guidelines without notice. Prices and product availability are subject to change. All maps, images, and renderings are conceptual and are not to scale.



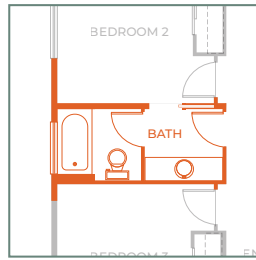
Additional Options



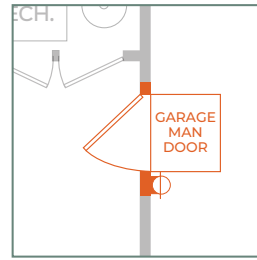
Roslyn B



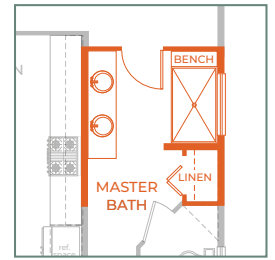
Appliance Pantry



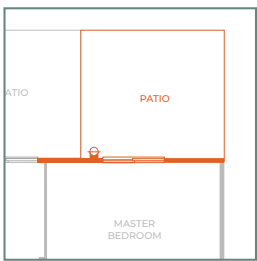
Pocket Door at Guest Bath



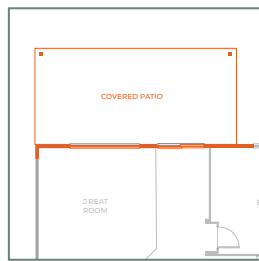
Garage Man Door



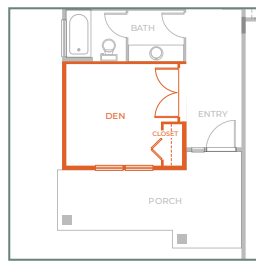
6' Master Shower with Bench Seat



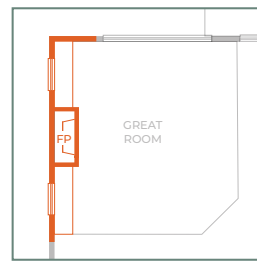
Master Slider with Patio



Covered Back Patio (24' X 12')



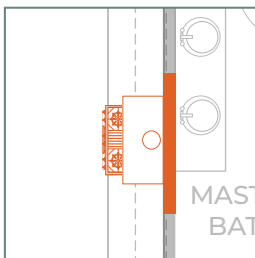
Den with French Door



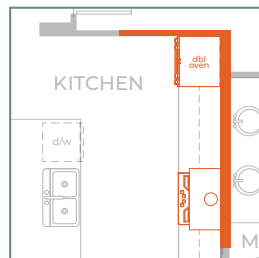
Fireplace with Built-ins



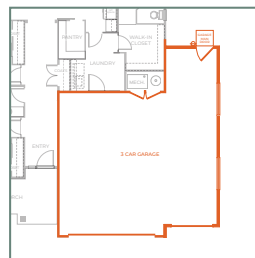
Laundry Sink, Cabinets and Bench



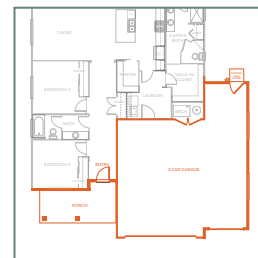
Kitchen with Range hood



Kitchen with Wall Oven Range hood and Cook-top



3 Car Garage



Roslyn B with 3 Car Garage



3 Car Garage Elevation



Limited Color Schemes Available

Roslyn B Elevation