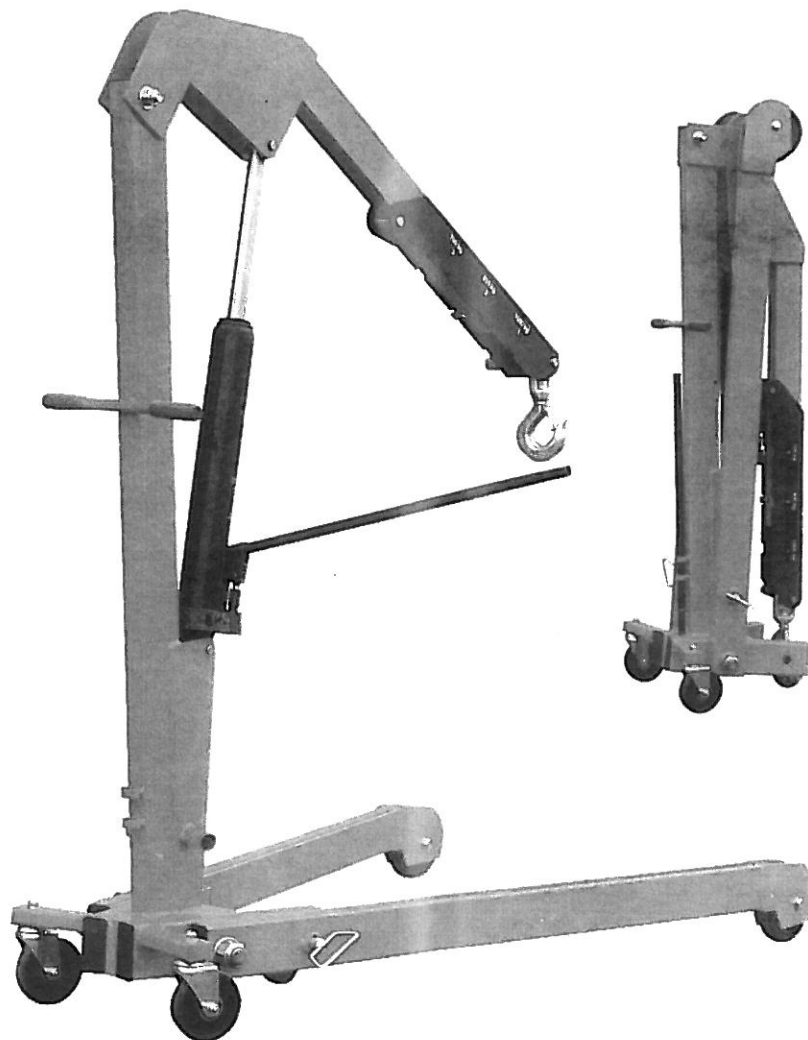


# 1 Ton Folding Engine Hoist

## OWNER'S MANUAL



### **FOR YOUR SAFETY.**

Please read these instructions carefully and retain them for future use.

## SPECIFICATIONS

Max. Capacity:.....2,000 lbs  
Base length.....70-1/16"  
Base Width:.....42-1/2"  
Max. Height:(2 ton).....50"  
Max. Height:(2 ton).....61-13/16"

Specifications are subject to change  
without notice

## IMPORTANT SAFETY INFORMATION

Read all safety warnings before operation.

### Warning!

Failure to obey these warnings may result in loss of load, damage to engine hoist , and/or engine hoist failure resulting in personal or property damage.

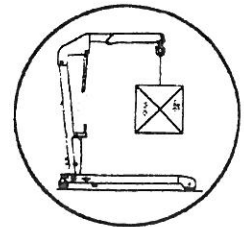
### WARNING!

Do not overload engine crane beyond rated capacity of each specified boom position. Overloading can cause damage to or failure, of the crane.

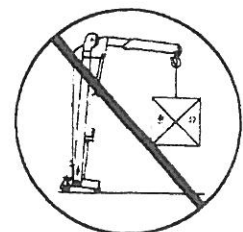
Always use crane on hard, level surface capable of sustaining the load. Use of crane other than hard level surfaces can result in crane instability and possible loss of load.

Boom are loading must be in lowest possible position before moving. Move load slowly and smoothly to avoid uncontrolled swinging and possible of loss load.

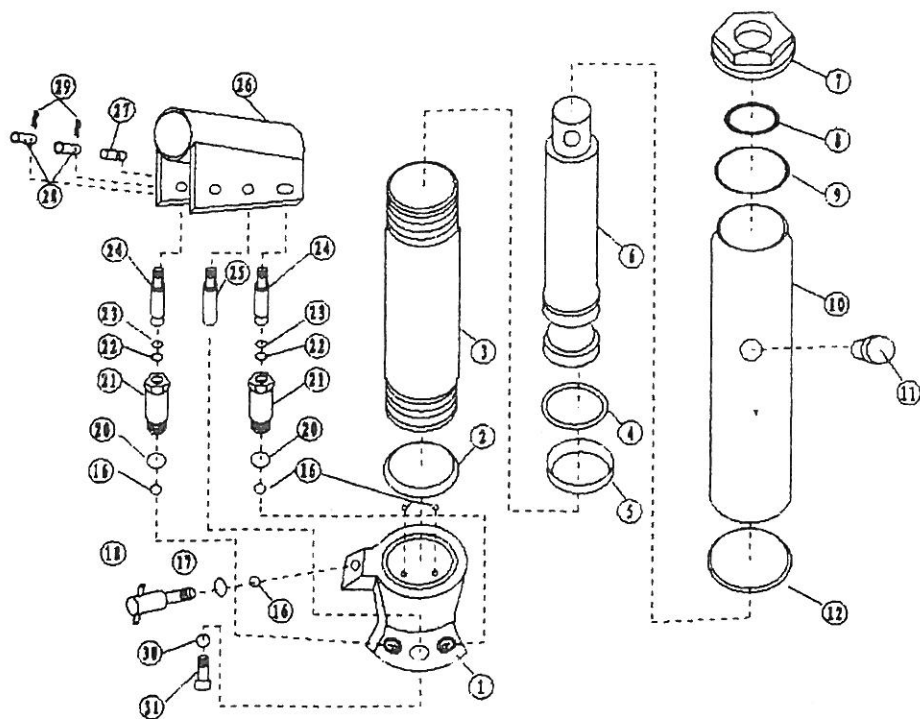
FRONT LEGS MUST ALWAYS BE LOCKED  
IN DOWN POSLTION BEFORE APPLYING  
LOAD AND/OR RAISING BOOM



BOOM MUST BE IN FULLY LOWERED POSITION BEFORE  
RALISING LEGS.LEGS MUST NEVER BE  
RAISED WHENCRAINE IS CARRYING LOAD.LEGS MUST  
BE LOCKED IN PLCE WHEN RAISED



NEVER WORK UNDER LOAD

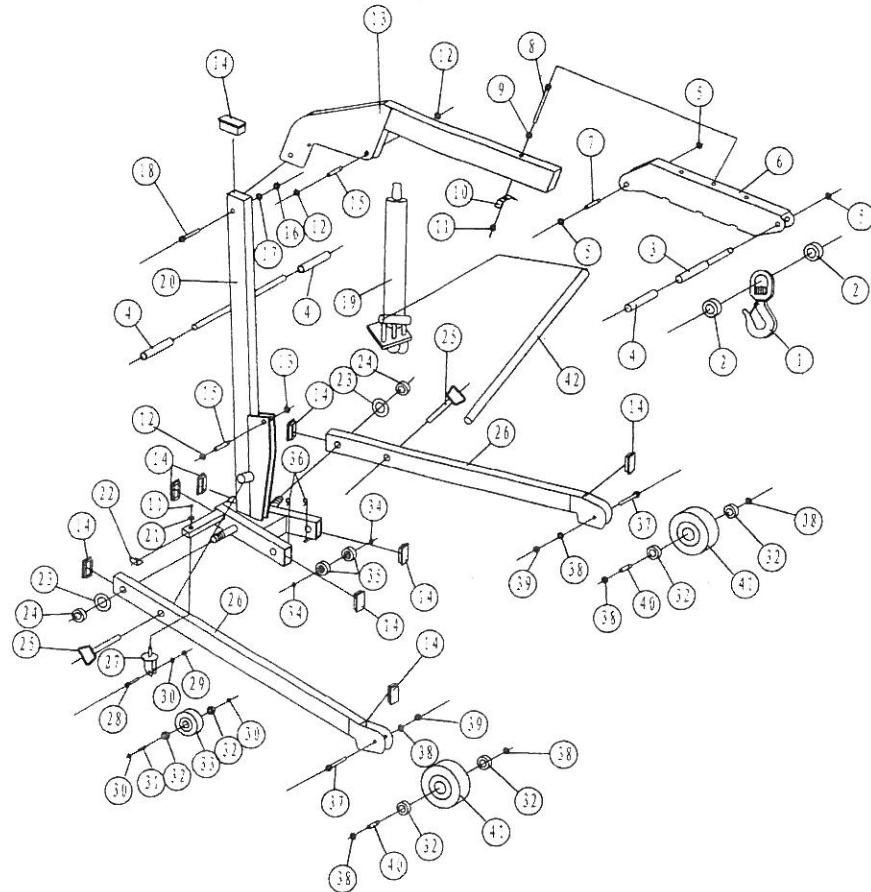


NO	Description	Qty	NO	Description	Qty	NO	Description	Qty
1	Valve Body	1	11	Oil Plug	1	25	Pin	1
2	Copper Gasket	1	12	Seal Ring	1	26	Handle Socket	1
3	Cylinder	1	16	Steel Ball	5	27	Axes	1
4	O-ring	1	17	Seal Ring	1	28	Connecting Pin	2
5	O-ring Retainer	1	18	Release Valve	1	29	Cotter Pi	2
6	Ram	1	20	Copper Gasket	2	30	Nut M10X15	1
7	Top Nut	1	21	Pump Cylinder	2	31	Gasket	1
8	O-Ring	1	22	O-ring	2			
9	Sealing Gasket	1	23	Back-up Ring	2			
10	Oil Chamber	1	24	Plunger	2			

### MAINTENANCE AND INSPECTION

1. Visual inspection must be made before each use of the hoist, checking for cracks, cracked welds and missing and/or damaged parts. Any hoist that appears to be damaged in any way must be removed from service immediately.
2. BECAUSE OF THE POTENTIAL HAZARDS ASSOCIATED WITH THE MISUSE OF EQUIPMENT OF THIS TYPE, NO MOSIFICATIONS SHALL BE MADE TO THE PRODUCT.

## ASSEMBLY DIAGRAM



## LIST OF CRANE FRAME

NO	Description	Qty	NO	Description	Qty	NO	Description	Qty
1	Hook Assembly	1	15	Shaft $\Phi 16$	2	29	Nut M10	2
2	Iron Lining	2	16	Nut M18	1	30	Gasket $\Phi 10$	6
3	Handle Pin	1	17	Gasket $\Phi 18$	1	31	Liner Bushing	2
4	Handle Cover	3	18	Bolt M18 $\times$ 90	1	32	Bearing	8
5	Retaining Ring	3	19	Hydraulic Ram	1	33	Back Wheel	2
6	Beam Extension	1	20	Body of Crane	1	34	Retaining Ring	2
7	Shaft $\Phi 18$	2	21	Gasket $\Phi 12$	2	35	Small Wheel	2
8	Bolt M12 $\times$ 130	1	22	Leg Cover	2	36	Split Pin	2
9	Sheath	1	23	Gasket $\Phi 30$	2	37	Bolt M14 $\times$ 80	2
10	Grip Block	1	24	Nut M30	2	38	Gasket $\Phi 14$	2
11	Nut M12	3	25	Inserted Pin	2	39	Nut M14	2
12	Retaining Ring	4	26	Front Leg	2	40	Liner Bushing	2
13	Beam	1	27	Frame of Roller	2	41	Front Wheel	2
14	Lid	7	28	Blot M10 $\times$ 60	2	42	Pump Handle	1

## HYSRAULICRAM ASSEMBLY