

8. Warranties.

All parts in stainless steel are covered by a 10-year warranty running from the date on the delivery note. The warranty will only be provided if:

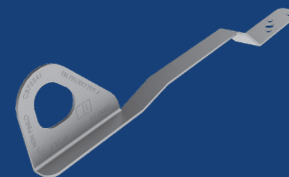
- The price of the supplied products has been fully paid;
- The product has been installed and used in compliance with the assembly instructions and technical instructions
- **The warranty will not be provided if:**
- **our safety products include parts or accessories of out-sourced origin.**
- Interventions or modifications to the original system performed without written authorization from the manufacturer/dealer

- Abnormal use differing from the purpose for which the equipment is intended;
- Defective installation that fails to conform to the drawings or the rules of the art
- Failure of the the customer to notify special conditions (pollution, temperature, number of users, etc.) of use of the equipment;
- Breakage of the supporting surface that houses the anchor device;
- By parts produced by the purchaser or obtained from sources other other than Genesi Italia added to our systems.

By unforeseen circumstances (force majeure) or by any event beyond the seller's control, such as warfare, lightning, etc. In all cases, our warranty is limited to the replacement or repair of the parts or equipment formally recognized as defective by our technical service. If the repairs are entrusted to third parties, they may only be performed after acceptance by SOMAIN ITALIA of the cost estimate for the repairs themselves. The warranty only applies to returned items and does not cover the cost of removing or re-installing the equipment from/into the system in which it is built. Repairs, replacements or modifications to parts or equipment during the warranty period may extend the warranty itself.

9. Website.

www.somainitalia.it - Manufacturer's official website



1. Technical information.

Dimension: 455 x 35 x 13 mm
Fixing hole: Ø13mm
Material: AISI 304
Finish: Natural
Weight: 0,412 Kg.

Only one single operator may connect to the anchor device.

It is used for creating safe conditions on sloping tiled roofs and is able to adapt to all types of tiles. The shape and size do not alter the most common roof laying methods and the anchor point is easily reached by the operator.

2. Manufacturer.

Somain Italia Srl
via Donizetti, 109/111
24030 - Brembate di Sopra - Bg

T. 035.620380
F. 035.6220438

M. acquisti@fisa.it

3. Approval.

The anchoring device has been tested and approved by:

Apave Sudeurope Sas (N°0082) - Cs60193 - 13322 Marseille Cedex 16 – France

The device has passed the tests required by the EN795: 2012 standards for type **devicest A**.

4. Maintenance.

Work directions.



The anchoring device can be mounted on any type of support capable of supporting the static loads required by the EN795: 2012 standard (**12 kN in the direction of application of the load**). The device stops the fall only if the installation is carried out correctly and if the fall occurs in the direction indicated or in any case within an angle of + -15 ° with respect to that direction.

It can be fixed to concrete/wooden supports as described alongside:

- Make a **Ø14 mm** hole in the concrete/wood, down to depth of **100 mm**;
- Clean the hole by turning the relative hole-cleaner around inside it, then blow it clean with a hand pump so as to eliminate all dust residues from the sides (repeat the operation several times);
- Dispense bi-component vinylester resin slowly so as to prevent air pockets from forming;
- Now insert the **M12 threaded bar** by exercising a twisting movement;
- Position the anchor point and allow the resin to harden for the time indicated on the package;
- Insert the flat washers and nuts on the threaded bar;
- Tighten the nuts by applying 40 Nm tightening torque.

Proceed as described below to install the anchor device on steel structures:

- Make a **Ø14 mm hole** in the supporting surface;
- Position the anchor point;
- Insert the **M12 threaded bar**;
- Insert the flat washers and nuts at the top and bottom of the threaded bar;

- The installer completes the installation by posting the mandatory identification sign Art. CA00. The sign must compulsorily be placed in correspondence with each access to the secured area and must be completed in its entirety.

The device is equipped with an anchor point to which one single operator can connect using a snap ring conforming to EN362.

Vertical clearance must be less than free fall distance so as to prevent the user from colliding with obstacles. Operators who use this type of system must be trained in view of the need to use appropriate Category III PPE. The use of this anchoring device is allowed only to operators equipped with specific Personal Protective Equipment (PPE) designed to **limit the maximum force on the operator in the event of a fall to 6 kN.**

1. Harness compliant with EN361
2. Double lanyard with energy absorber
3. Carabiners compliant with EN362
4. If necessary, retractable device compliant with EN360

- Rescue procedures must be drawn up so that emergency situations that occur during work can be dealt with.
- Take care when using PPE or any other safety device. You are advised to read the operating instructions of any other safety device used to prevent interference between devices and to comply with all the instructions concerning preliminary inspections before using any device.
- Do not use the device if you have doubts about how to use it. The devices have already been subjected to stress during a fall and have not been examined by a competent person who has certified their fitness for reuse;
- The structure where the device is positioned must be able to withstand the mechanical stress generated by a fall;
- Carefully read the instructions describing how to connect to the device;
- Always check the free fall distance so as to avoid colliding with the ground or with any other obstacle;
- The device can be installed at any latitude and its use is not influenced by the outdoor temperature. However, it is inadvisable to work on roofs in cold weather: the risk of falling increases if the surface is slippery owing to ice;
- CE inspection is performed by: Apave Sudeurope Sas (N°0082) Cs60193 13322 Marseille Cedex 16 – France;
- If the product is sold beyond the borders of Italy, the seller must provide instructions for use, maintenance, routine inspections and repairs in the language of the destination country;
- The anchor device must only be used to protect against the risk of falling and not as a means for lifting materials and objects;
- When the operator reaches the point of access, he must check the date of the last inspection as indicated in the obligatory identification notice (art.CA00) and on the “inspection/maintenance registration form”. If the last inspection dates back more than 12 months, the device must not be used until it has been inspected by a competent person.

- ## 7. Inspection/Maintenance registration form

- Visual and mechanical inspection
- Check the condition of the device (absence of permanent deformation, corrosion). Use a torque wrench to make sure that the tightening torque is correct.

It is obligatory to record annual maintenance/inspection, supplementary maintenance and uses of the device on the registration form provided here; this to assure future users that the system has been used correctly and periodically serviced.

Use- Maintenance/Inspection – Supplementary maintenance:

[illegible]