

DISAPPEARING MINI-BRACKET - ABS SCREW MOUNTING

INSTALLATION INSTRUCTIONS

FOR ENGINEERING

Fixture Installation Instructions:

To be ADA compliant, mount so the bottle pump is 48" from finished floor.

Mount using provided ANCHORS and SCREWS.

INSTALLATION KIT INCLUDES:

Installation templates, anchors, screws & key.

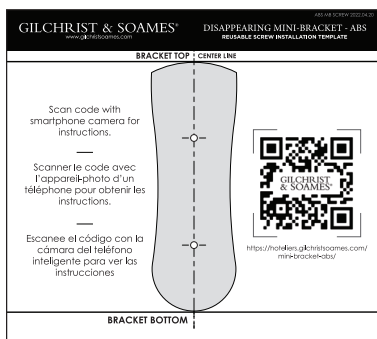
SUPPLIES NEEDED:

Universal cleaner/detergent, isopropyl alcohol, silicone sealant, clean/dry cloths, drill, screwdriver, level, pencil, tape & gloves.

*Note: Anchors provided are designed for use with 3/8 inch drywall thickness.

- **Step 1** - Review Installation Template and instructions for dispenser bracket placement.
- **Step 2** - Locate a flat, leveled area for mounting bracket, away from a direct continuous stream of water. Leave at least 4" clearance from any walls or fixtures.
- **Step 3** - Clean surface with detergent to remove all soap film and dirt.
- **Step 4** - Wipe surface with a 50/50 mixture of isopropyl alcohol/water and pat dry.
- **Step 5** - Use Installation Template (Illustration 1) to identify bracket placement. Use a level to align, then place tape on all 4 corners to hold the Template to the wall in the desired position.
- **Step 6** - Carefully mark the position of each screw hole with a pencil (Illustration 2). If installing more than 1 bracket, place 2 templates side-by-side for correct spacing (Illustration 3)
- **Step 7** - Carefully remove the template for reuse.
- **Step 8** - Drill the holes and install the provided anchors to secure the screws.
- **Step 9** - Place the bracket(s) against the wall and secure using the screws provided. Be sure the screw heads are flush and do not stick out into the bracket slot.
- **Step 10** - Using a silicone tube with a small nozzle, apply a thin bead of silicone around the perimeter of bracket.
- **Step 11** - Allow 24 hours for silicone to cure before bottle installation.

Illustration 1: Reusable Installation Template (included)



Please note bracket center lines and bracket top edge are included to help align brackets to the wall.

← Leave 4" from any bathroom wall or any bathroom fixture. →

Illustration 2:

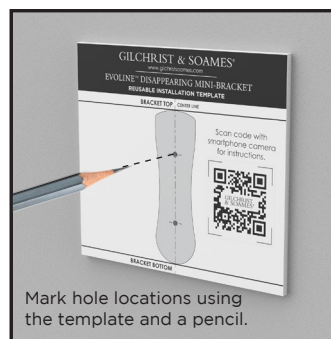
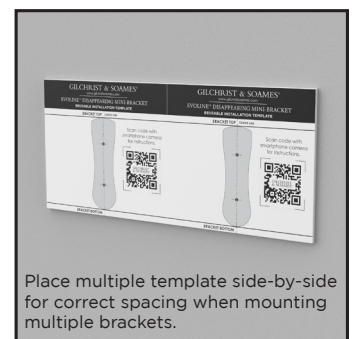


Illustration 3:



“IMPORTANT INFORMATION BEFORE INSTALLING DISPENSER BRACKET SYSTEM”

Please review all operation and installation instructions with your hotel engineering department and tile and shower wall supplier/manufacturer before installing dispenser bracket system.

In no event shall Guest Supply be liable for any damages of any sort arising out of the installation of the dispenser bracket system, whether direct, indirect, special, incidental, consequential or otherwise.

DISAPPEARING MINI-BRACKET - ABS

OPERATION INSTRUCTIONS

FOR HOUSEKEEPING

Bottle Installation & Replacement:

*Wait at least 24 hours after bracket installation before installing bottles.

IMPORTANT

DO NOT USE abrasive cleaning chemicals, abrasive acidic cleaning chemicals or abrasive cleaning sponge or cloth.

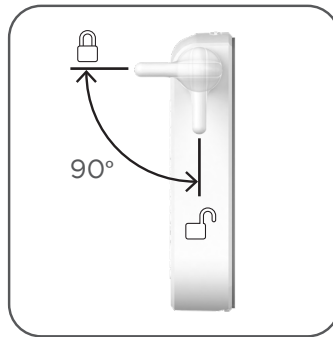
Bracket Operation

STEP 1



Unlock the bracket by inserting the key and rotating to the COUNTERCLOCKWISE position.

NOTE!



Note: The key rotates 90° between the locked and unlocked positions. Do not force the key to turn beyond this range.

STEP 2



Open the bottle pump by turning the spout COUNTERCLOCKWISE until it pops up.

STEP 3



Align the rib on the back of the bottle with the open channel of the bracket.

STEP 4



Slide the bottle downward into the bracket channel.

STEP 5



Lock the bracket by inserting the key and turning CLOCKWISE 90°.

STEP 6



The bottle is now securely locked inside the bracket.

DISAPPEARING MINI-BRACKET - ABS

CARE INSTRUCTIONS

These guest room accessories are handcrafted and require special care for long term enjoyment.

CAUTION: DO NOT USE

Abrasive cleaning chemicals

Acidic cleaning chemicals

Abrasive cleaning sponge / cloth

RECOMMENDED CLEANING INSTRUCTIONS

Use clean damp cloth with mild soap to gently wipe down the bracket, bottles & pump spouts.

Wipe with clean damp cloth to remove soap.

With a dry clean cloth, wipe off all cleaned areas to remove water spots.