

DISAPPEARING MINI-BRACKET SCREW MOUNTING

INSTALLATION INSTRUCTIONS

FOR ENGINEERING

Fixture Installation Instructions:

To be ADA compliant, mount so the bottle pump is 48" from finished floor.

INSTALLATION KIT INCLUDES:

Installation templates, anchors, screws & key.

SUPPLIES NEEDED:

Universal cleaner/detergent, isopropyl alcohol, silicone sealant, clean/dry cloths, drill, screwdriver, level, pencil, tape & gloves.

Mount using provided ANCHORS and SCREWS.

*Note: Anchors provided are designed for use with 3/8 inch drywall thickness.

*Please check the locking function of bracket by repeating Step 11 & Step 12 prior to installation.

*Refer to illustrations on page 2.

- **Step 1** - Review Installation Template and instructions for dispenser bracket placement.
- **Step 2** - Locate a flat, leveled area for mounting bracket, away from a direct continuous stream of water. Leave at least 4" clearance from any walls or fixtures.
- **Step 3** - Clean surface with detergent to remove all soap film and dirt.
- **Step 4** - Wipe surface with a 50/50 mixture of isopropyl alcohol/water and pat dry.
- **Step 5** - Use Installation Template to identify bracket placement. Use center lines & top marks or top edge of template with a level to align and assure straightness (Illustration 1).
- **Step 6** - Using tape on all 4 corners, tape the Installation Template to the wall in the desired position.
- **Step 7** - Carefully mark the position of each screw hole with a pencil (Illustration 2). If installing more than 1 bracket, place 2 templates side-by-side for correct spacing (Illustration 3)
- **Step 8** - Carefully remove the template for reuse.
- **Step 9** - Drill the holes and install the provided anchors to secure the screws.
- **Step 10** - Place the bracket(s) against the wall and secure using the screws provided. Be sure the screw heads are flush and do not stick out into the bracket slot.
- **Step 11** - Locate the lock slot opening on right side of bracket (Illustration 4).
- **Step 12** - Insert Key into lock slot opening and push inward to open the lid (Illustration 5).
- **Step 13** - Using a silicone tube with a small nozzle, apply a thin bead of silicone around the perimeter of bracket. Leave locking lid open.
- **Step 14** - Allow 24 hours for silicone to cure before bottle installation.

"IMPORTANT INFORMATION BEFORE INSTALLING DISPENSER BRACKET SYSTEM"

Please review all operation and installation instructions with your hotel engineering department and tile and shower wall supplier/manufacturer before installing dispenser bracket system.

In no event shall Guest Supply be liable for any damages of any sort arising out of the installation of the dispenser bracket system, whether direct, indirect, special, incidental, consequential or otherwise.

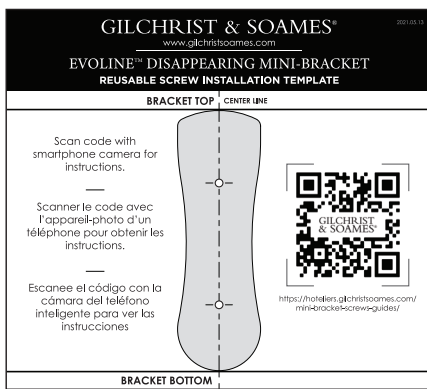
DISAPPEARING MINI-BRACKET SCREW MOUNTING

INSTALLATION INSTRUCTIONS

FOR ENGINEERING

Fixture Installation Instructions: (CONTINUED)

Illustration 1: Reusable Installation Template (included)



Please note bracket center lines and bracket top edge are included to help align brackets to the wall.

← Leave 4" from any bathroom wall or any bathroom fixture. →

Illustration 2:

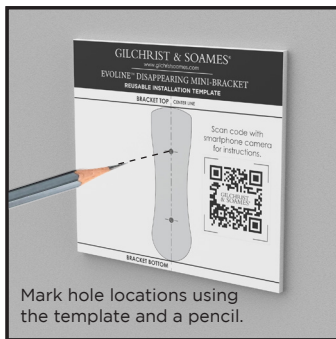


Illustration 3:

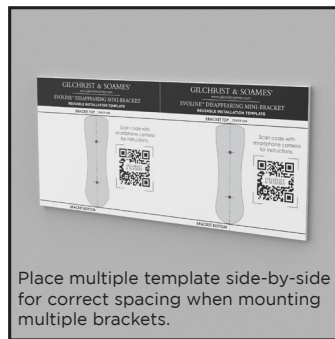


Illustration 4:

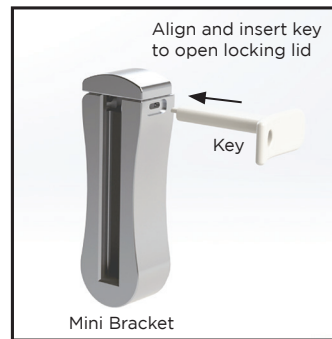


Illustration 5:



DISAPPEARING MINI-BRACKET

OPERATION INSTRUCTIONS

FOR HOUSEKEEPING Bottle Installation & Replacement:

IMPORTANT

DO NOT USE abrasive cleaning chemicals, abrasive acidic cleaning chemicals or abrasive cleaning sponge or cloth.

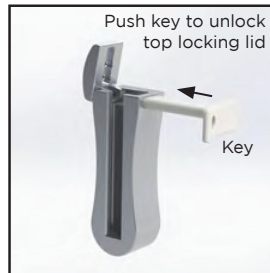
Step A:



Step B:



Step C:



Step D:



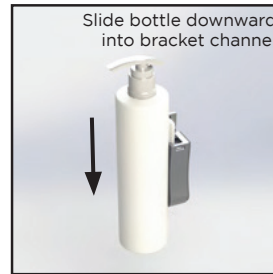
Step E:



Step F:



Step G:



Step H:



Step I:



*Wait at least 24 hours after bracket installation before loading pump bottles.

- **Step A** - Locate the lock slot opening on right side of bracket.
- **Step B** - Align and insert key into lock slot opening.
- **Step C** - Push key inward to open top locking lid.
- **Step D** - Review the bottle and locate the locking back rib.
- **Step E** - Open bottle pump by turning spout counterclockwise.
- **Step F** - Align locking back rib to the bracket channel.
- **Step G** - Slide bottle downward fully into the bracket for a secure fit.
- **Step H** - Push locking lid down until it clicks to lock bottle in bracket.
- **Step I** - Align pump spouts to front position.

DISAPPEARING MINI-BRACKET

CARE INSTRUCTIONS

These guest room accessories are handcrafted and require special care for long term enjoyment.

CAUTION: DO NOT USE

Abrasive cleaning chemicals

Acidic cleaning chemicals

Abrasive cleaning sponge / cloth

RECOMMENDED CLEANING INSTRUCTIONS

Use clean damp cloth with mild soap to gently wipe down the bracket, bottles & pump spouts.

Wipe with clean damp cloth to remove soap.

With a dry clean cloth, wipe off all cleaned areas to remove water spots.