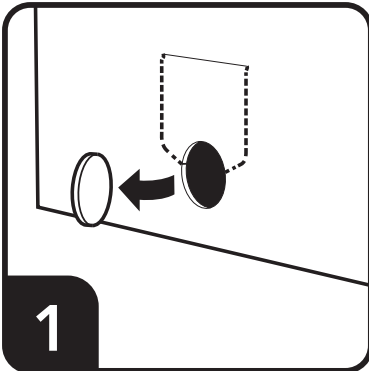


# BAG-IN-A-BOX

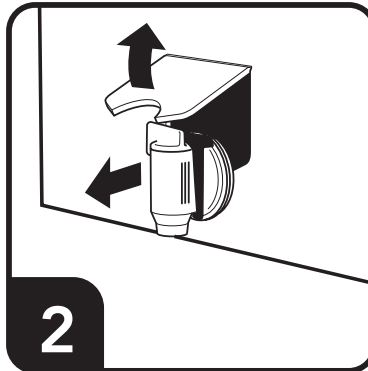
## OPERATION INSTRUCTIONS

**IMPORTANT:** Do not use sharp or pointy tools to open perforations.  
This will puncture the inner bladder.

### Instructions



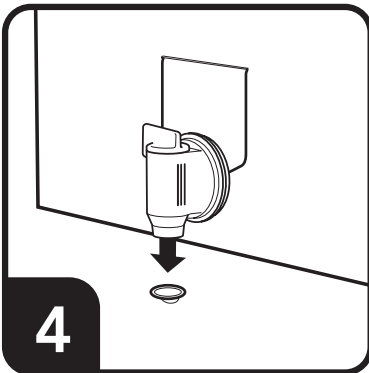
**1**  
Carefully tear along the perforations on the front of the box. Remove the round portion to create a hole for the spigot.



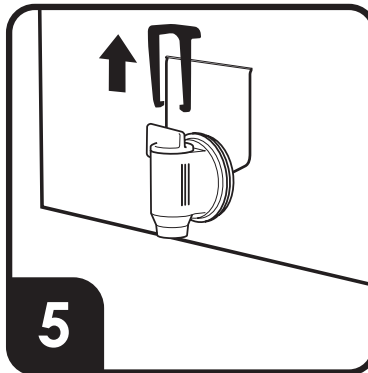
**2**  
Lift up the flap and pull the spigot through the hole.



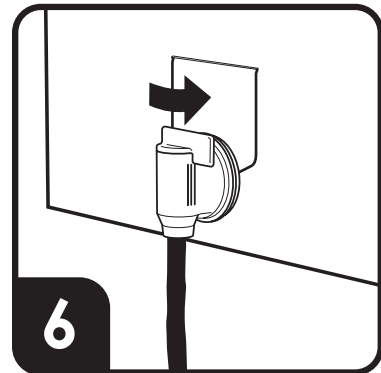
**3**  
Close the flap behind the spigot to lock the spigot in place.



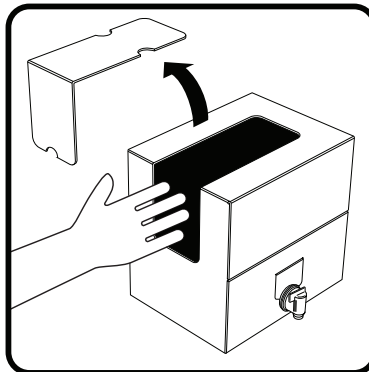
**4**  
Remove the safety seal from the spigot opening.



**5**  
Remove the retaining clip from the valve.



**6**  
Bag-in-a-Box is now ready! Just rotate the valve to open.



As the bag becomes empty, product flow may slow down.

To increase flow, remove the perforated panel from the top of the box to access and gently squeeze the bag.

Corrugate box breaks down flat for easy recycling. Contents may be recyclable subject to your local recycling center capabilities.