

withcodeexample.com



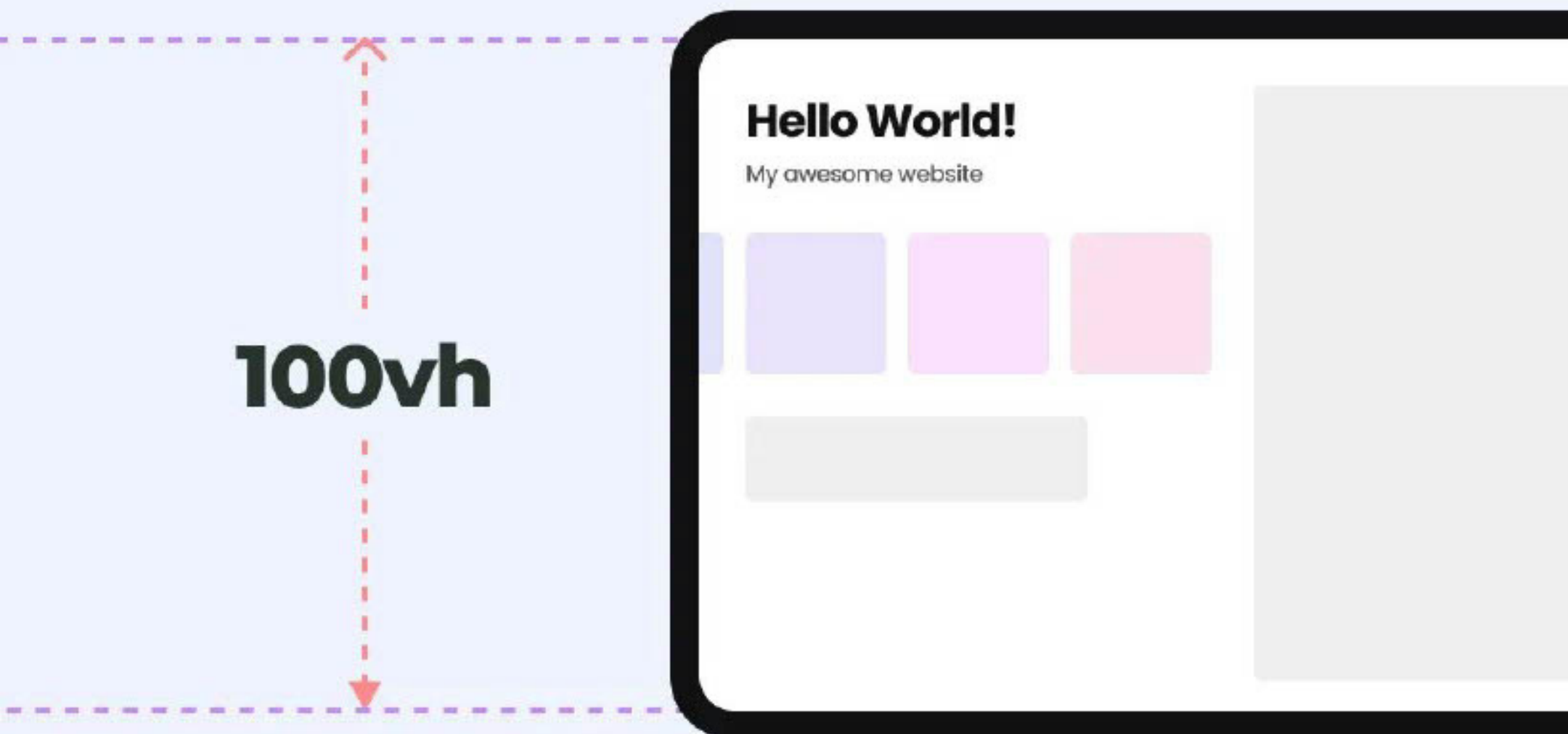
**What are these
new units in CSS?**



vh unit

You may already know about the **vh** unit (viewport height) in CSS, which is 1% of the height of the visible area.

100vh is the total viewport height.

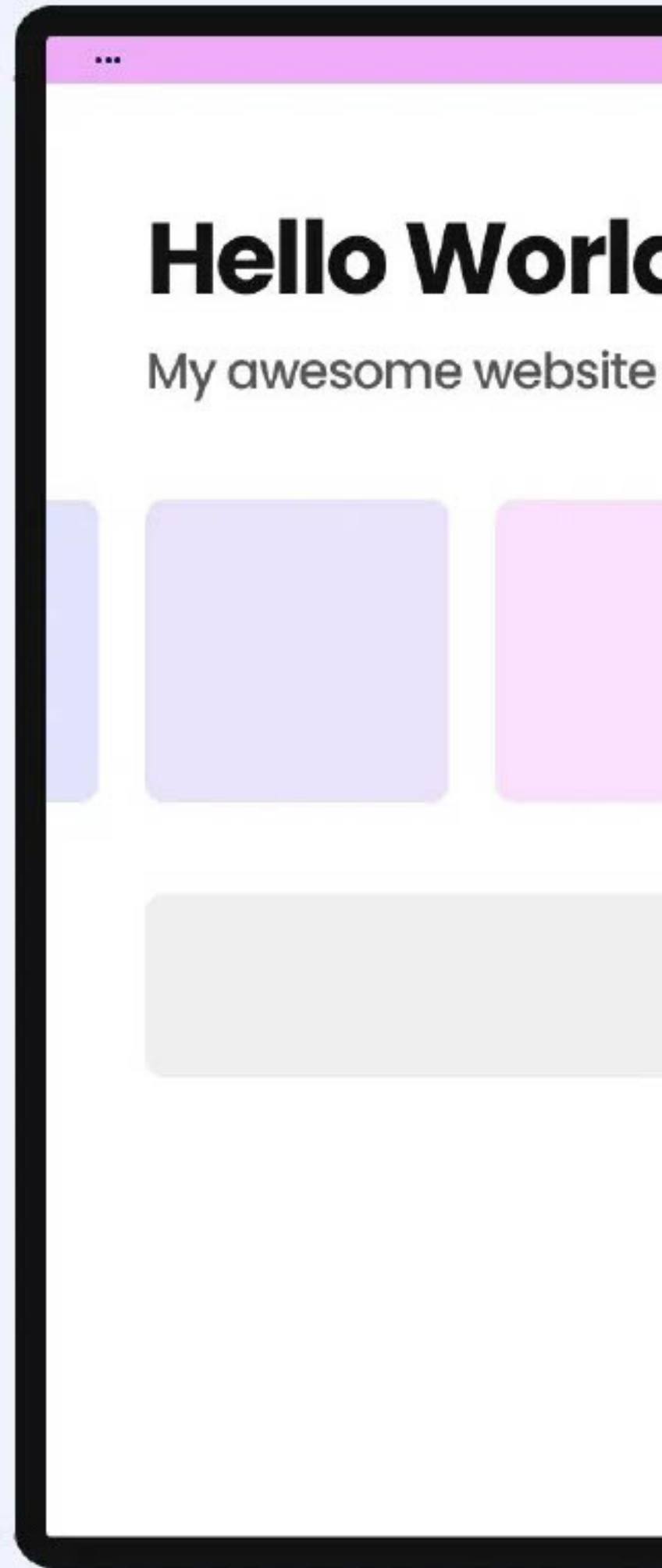


But there is
a problem
with the
vh unit for
mobile devices.



withcodeexample.com

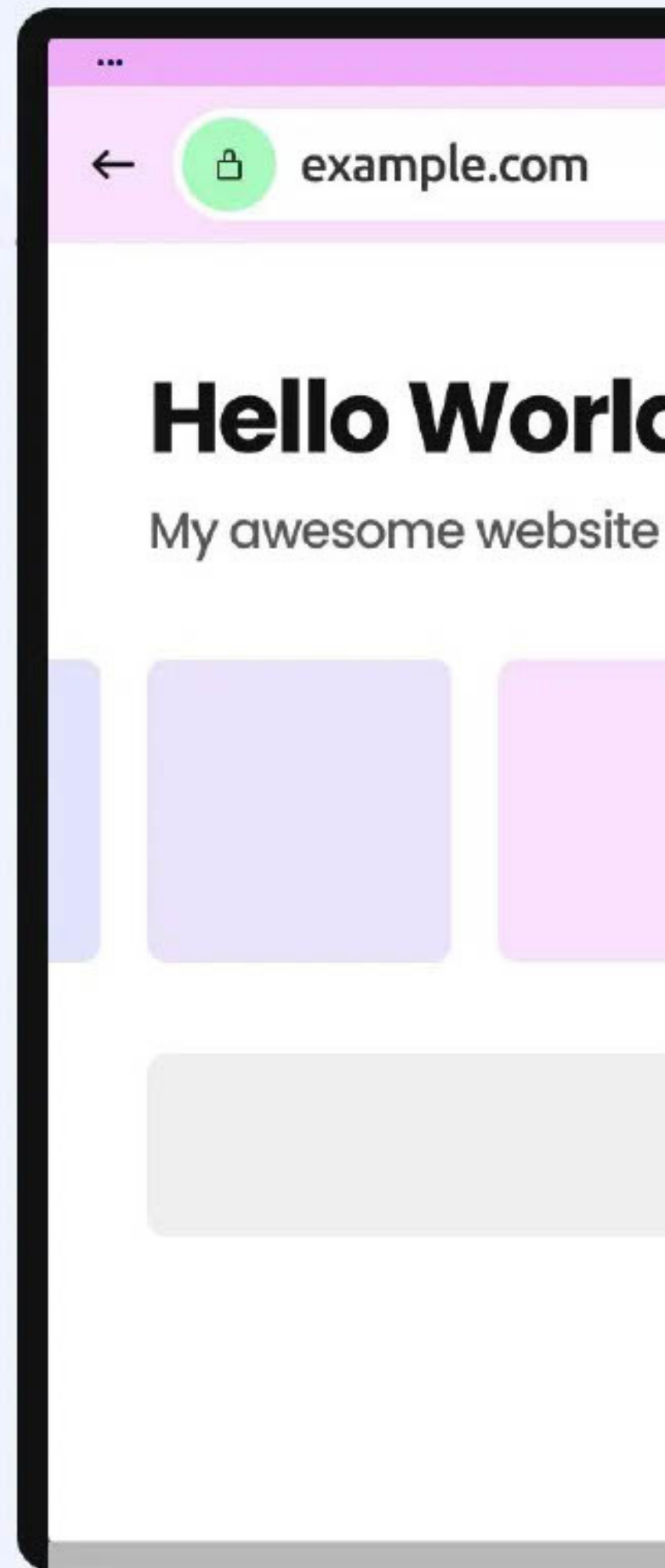
100vh gives
the maximum
viewable
height



withcodeexample.com

ADDRESS BAR

But when the browser controls are visible, it causes any element with **100vh height** to **overflow**



3 new CSS properties have been introduced to solve this problem

svh	small viewport height
lvh	large viewport height
dvh	dynamic viewport height



withcodeexample.com

lvh

equals to 1% of the height of the visible area when the **controls are hidden**

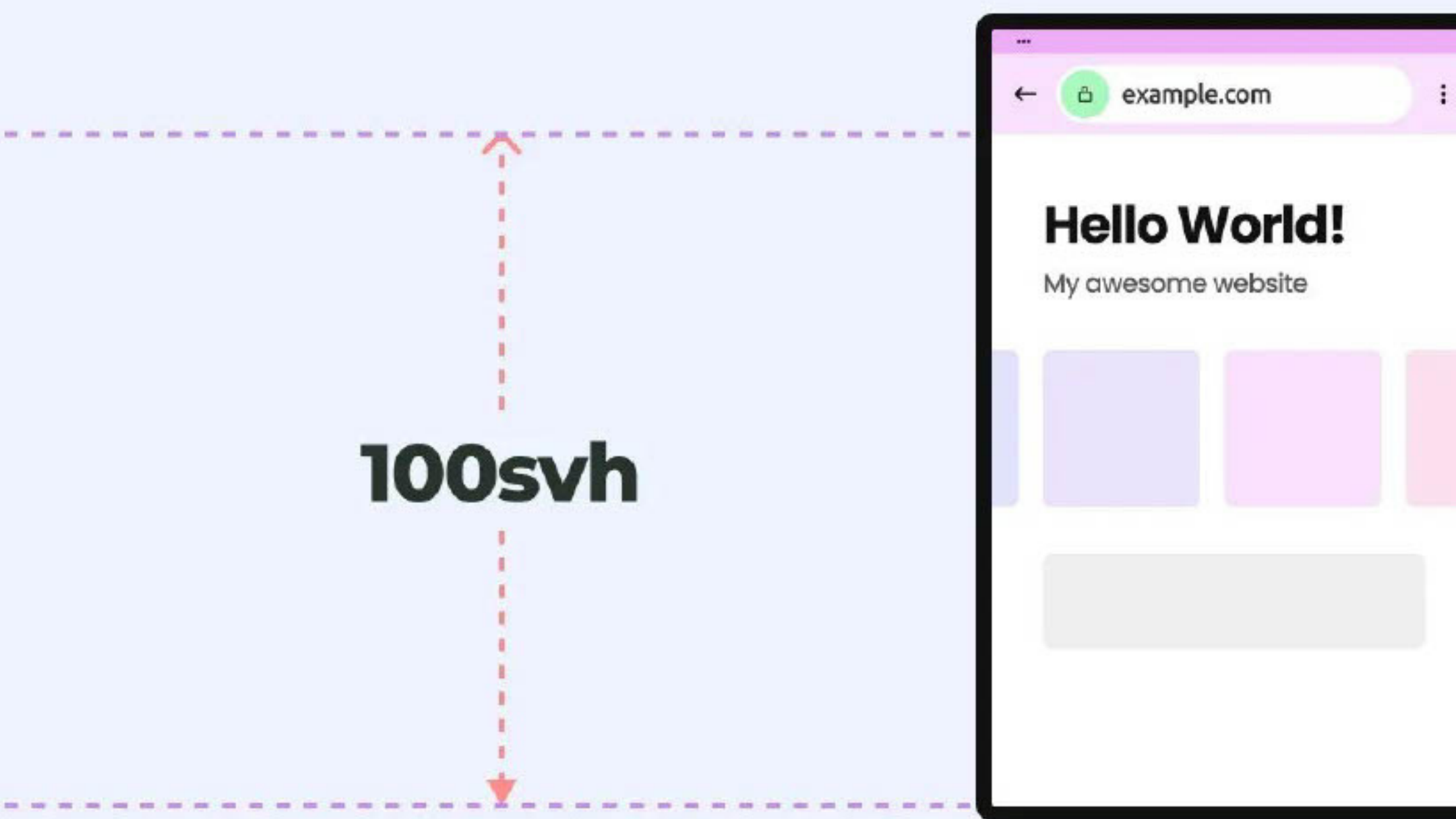
100lvh



withcodeexample.com
→

svh

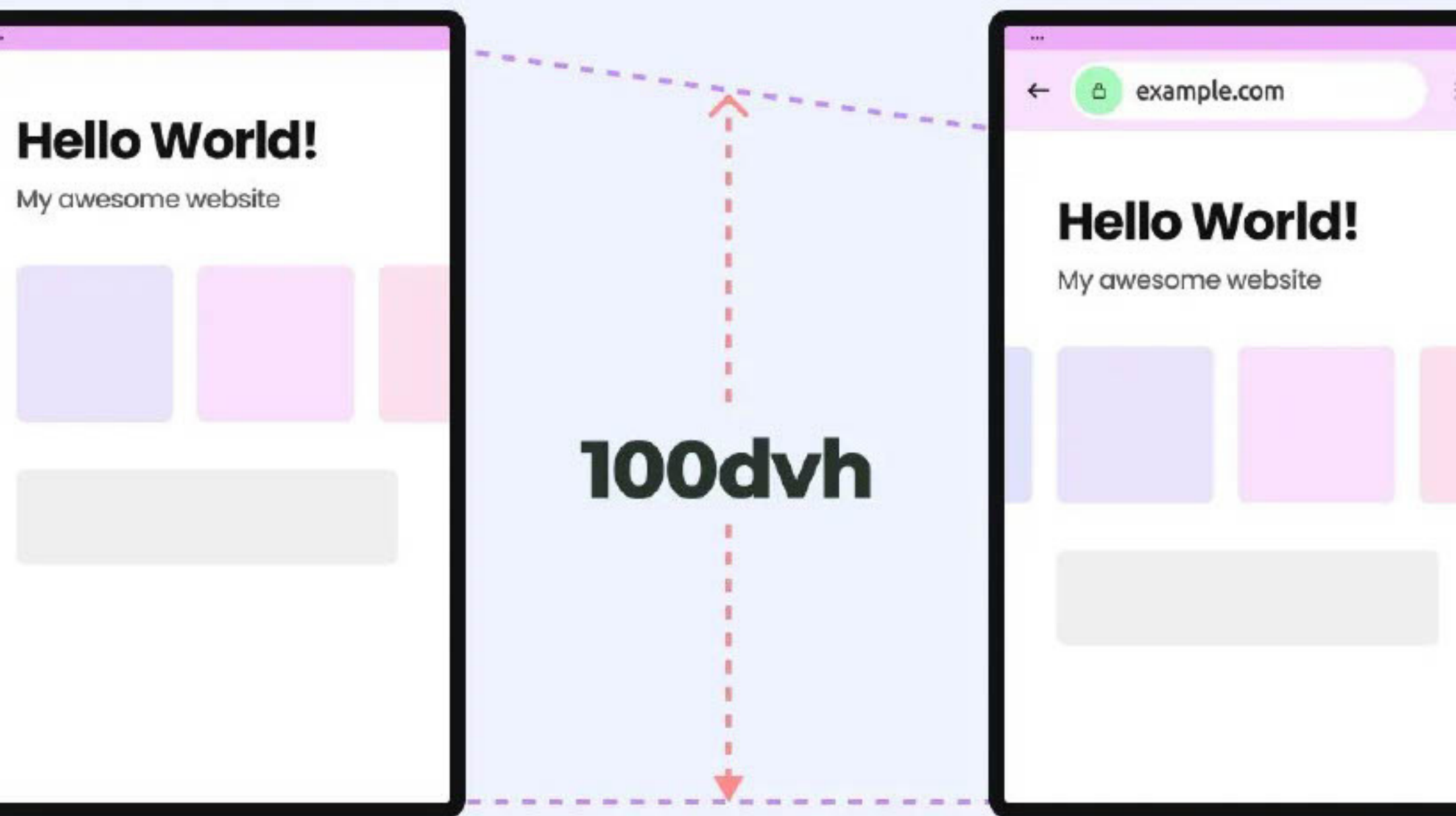
equals to 1% of the height of the visible area when the **controls are visible**



withcodeexample.com

dvh

switches dynamically between lvh and svh depending on the visibility of controls



withcodeexample.com

Thanks for reading!

🗨️ SHARE YOUR
THOUGHTS

