



419110
Total Defense
Mailbox Shield™

For assistance or replacement parts please contact Simplay3®
Pour de l'assistance ou des pièces de rechange, veuillez communiquer avec Simplay3MD
Para recibir asistencia o conseguir piezas de repuesto, póngase en contacto con Simplay3®

The Simplay3 Company
9450 Rosemont Drive
Streetsboro, OH 44241

| 1-866-855-0100
 | www.simplay3.com



ENGLISH

OBSERVE THE FOLLOWING STATEMENTS AND WARNINGS TO
REDUCE THE LIKELIHOOD OF SERIOUS OR FATAL INJURY.
SAVE THIS SHEET FOR FUTURE REFERENCE.

WARNING:

- **Choking Hazard:** Small parts. Sharp points. Adult assembly required.

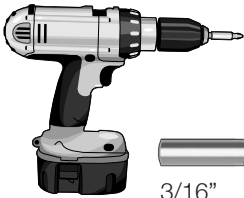
- **Required for Installation (choose one method from below):**
- (1) Two T-post fence posts to match height of mailbox (not included)
- (2) Two Standard 4"x4" posts to match height of mailbox (not included)
- (3) Two Standard 2"x4" posts to match height of mailbox (not included)
- (4) One Standard 4"x4" post to match height of mailbox (not included)
- Wooden posts are recommended to be installed 18"-24" deep in the ground.
- **Decal Application:**
Clean and dry area thoroughly. Center decal in area. Apply pressure from center to outer edge.
- **To minimize risks posed by drill shavings**, screws are designed to pierce the plastic and form their own threads. Use caution not to over-tighten screws or they will not hold parts together appropriately.
- **Cleaning Instructions:**
General cleaning: Use mild soapy water.
- **Disposal Instructions:**
Please recycle when possible. Disposal must be in compliance with all government regulations.

RECOMMENDED TOOLS

For Metal Posts



For Wood Posts



3/16"

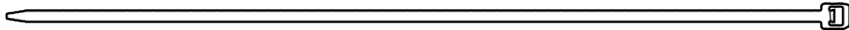
PARTS LIST A

A x2

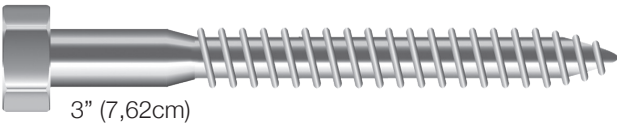


PARTS LIST B

B x8

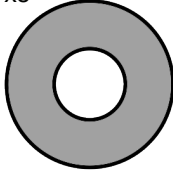


C x8

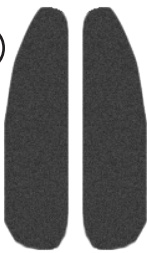


3" (7,62cm)

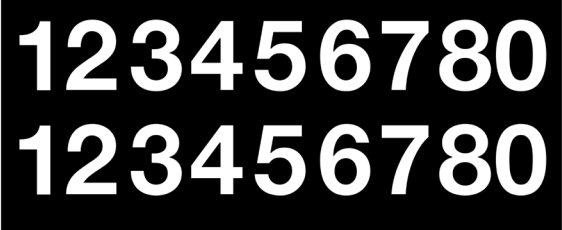
D x8



E



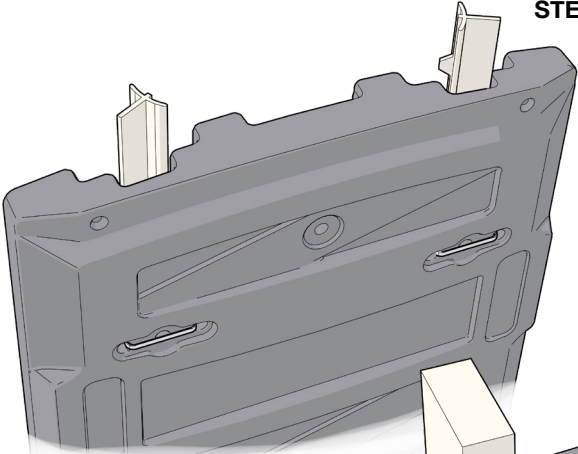
F



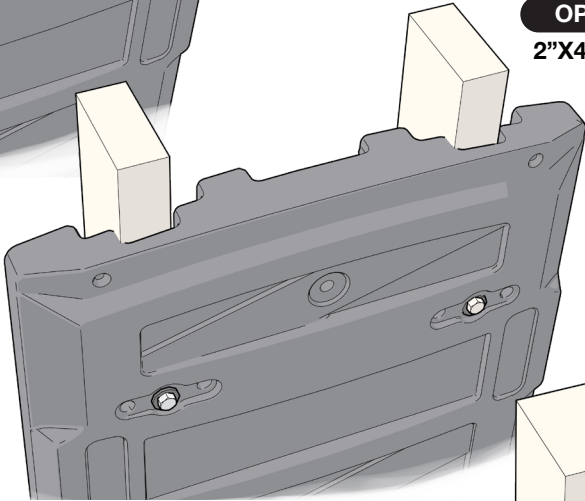
CHOOSE YOUR INSTALLATION METHOD

MEDIUM DUTY APPLICATION

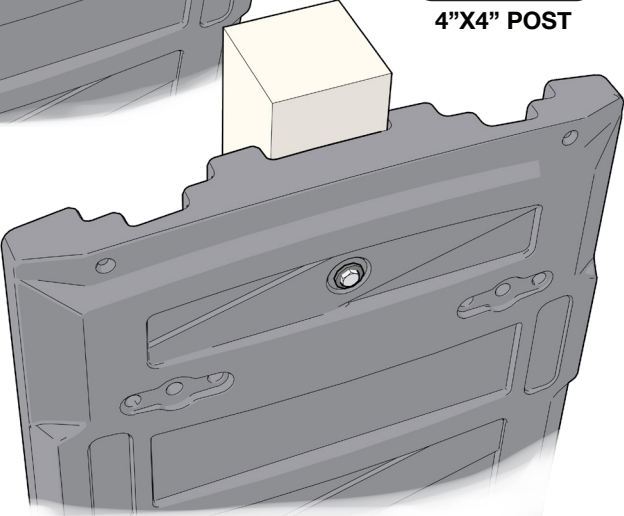
OPTION 1
STEEL T-POSTS



OPTION 2
2"X4" POSTS

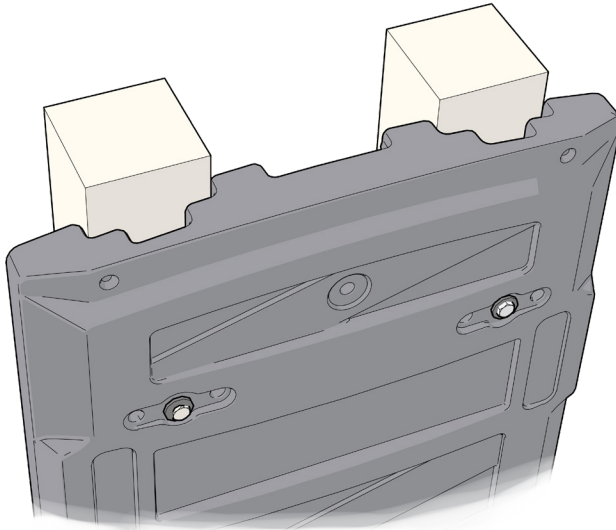


OPTION 3
4"X4" POST

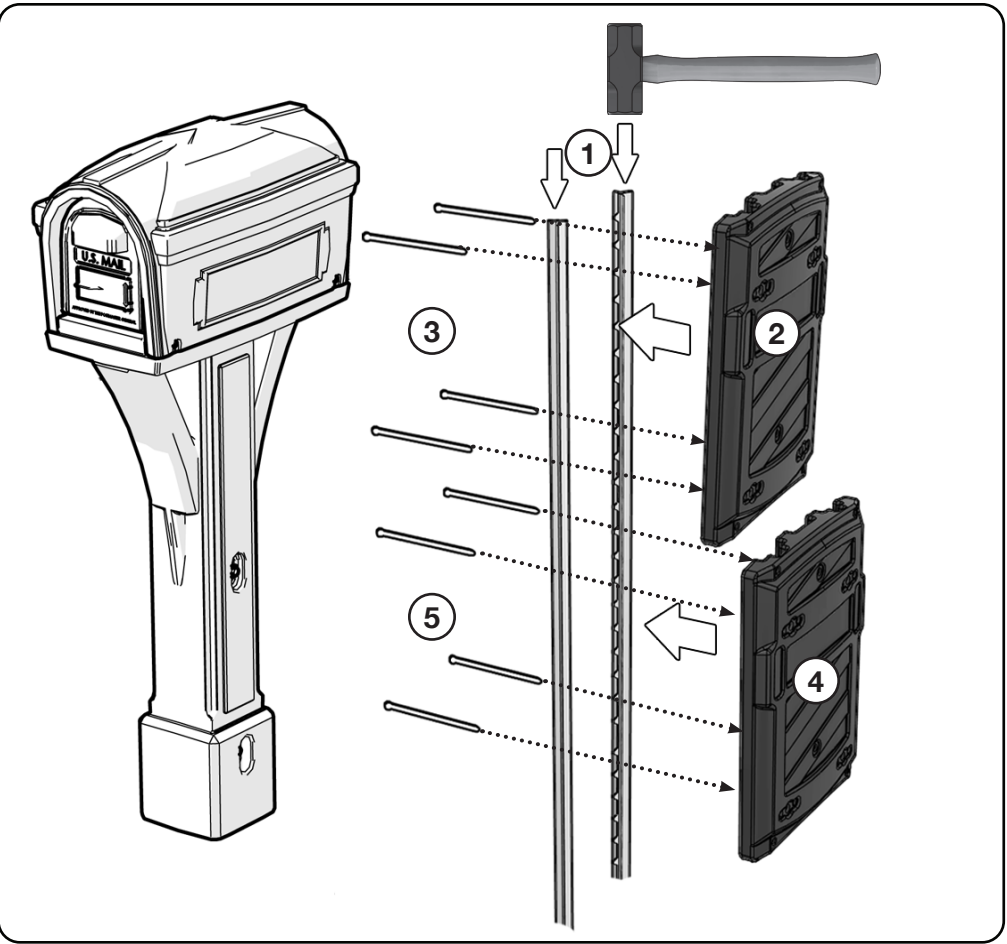
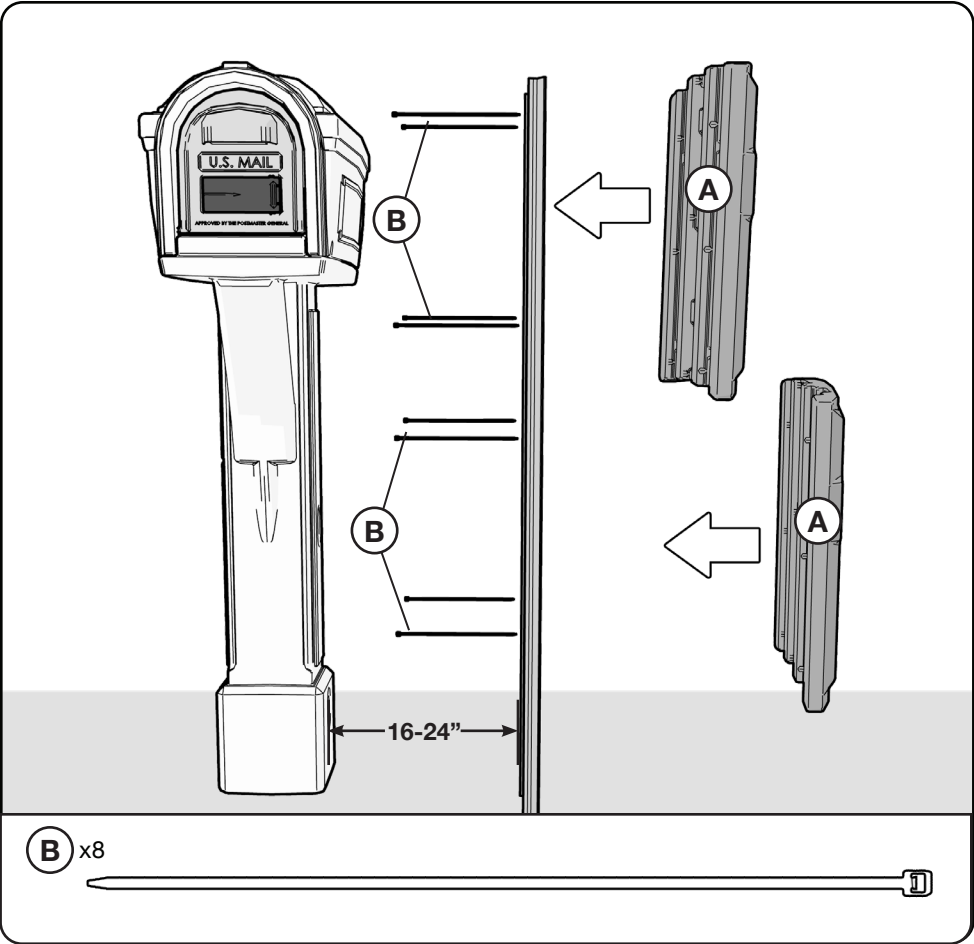


HEAVY DUTY APPLICATION

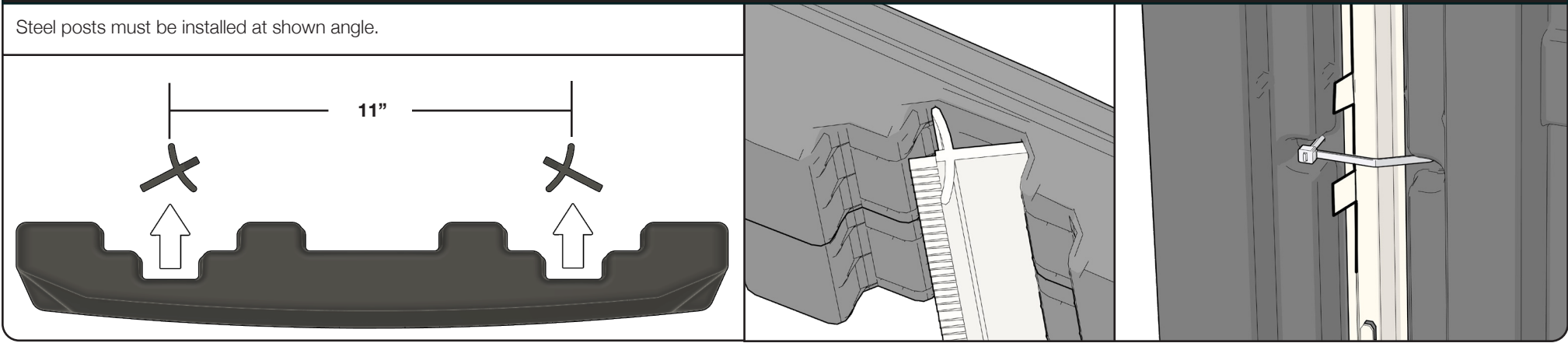
OPTION 4
4"X4" POSTS



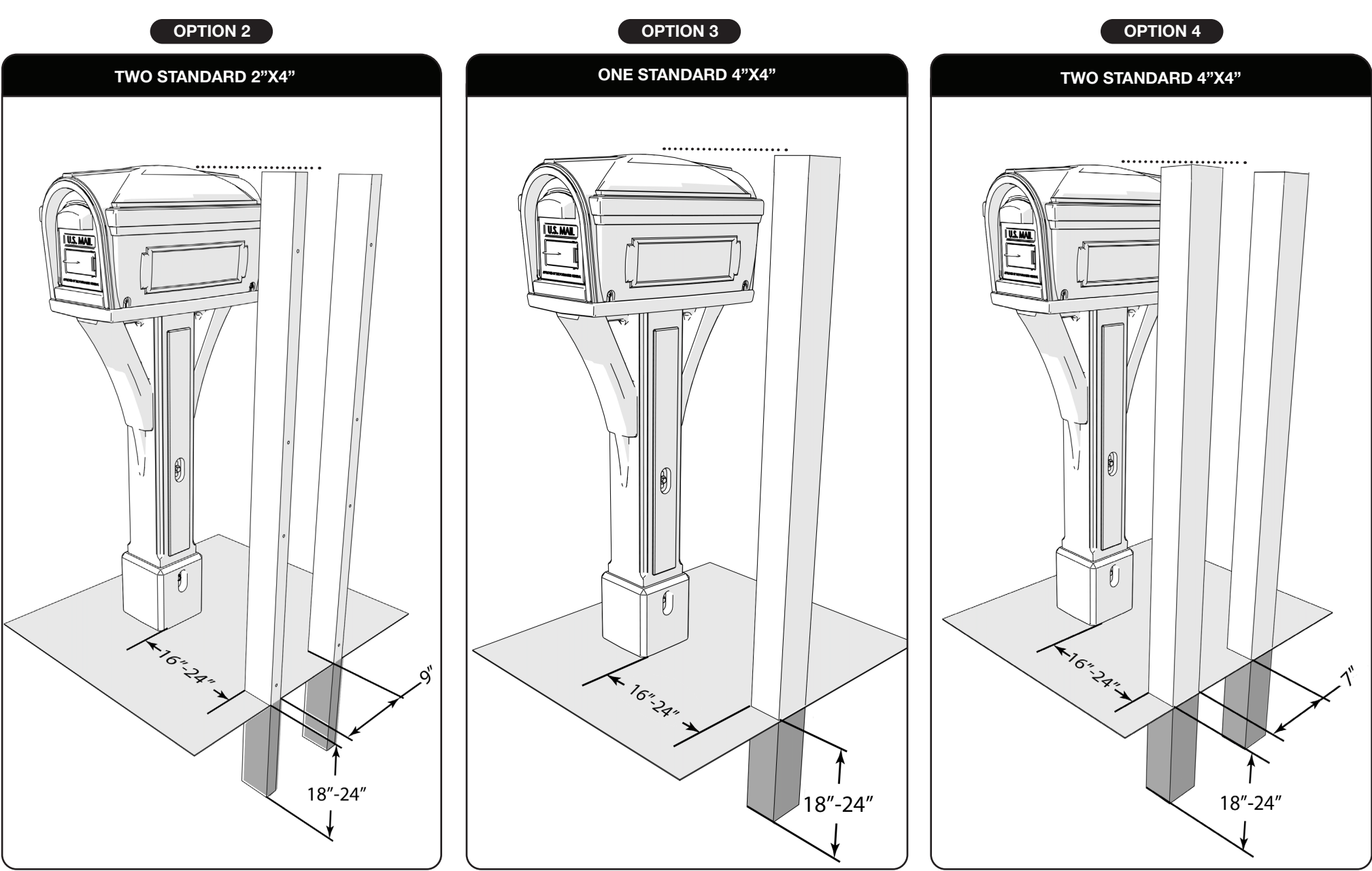
OPTION 1: MEDIUM DUTY APPLICATION - TWO STEEL T-POST FENCE POSTS TO MATCH HEIGHT OF MAILBOX (NOT INCLUDED)



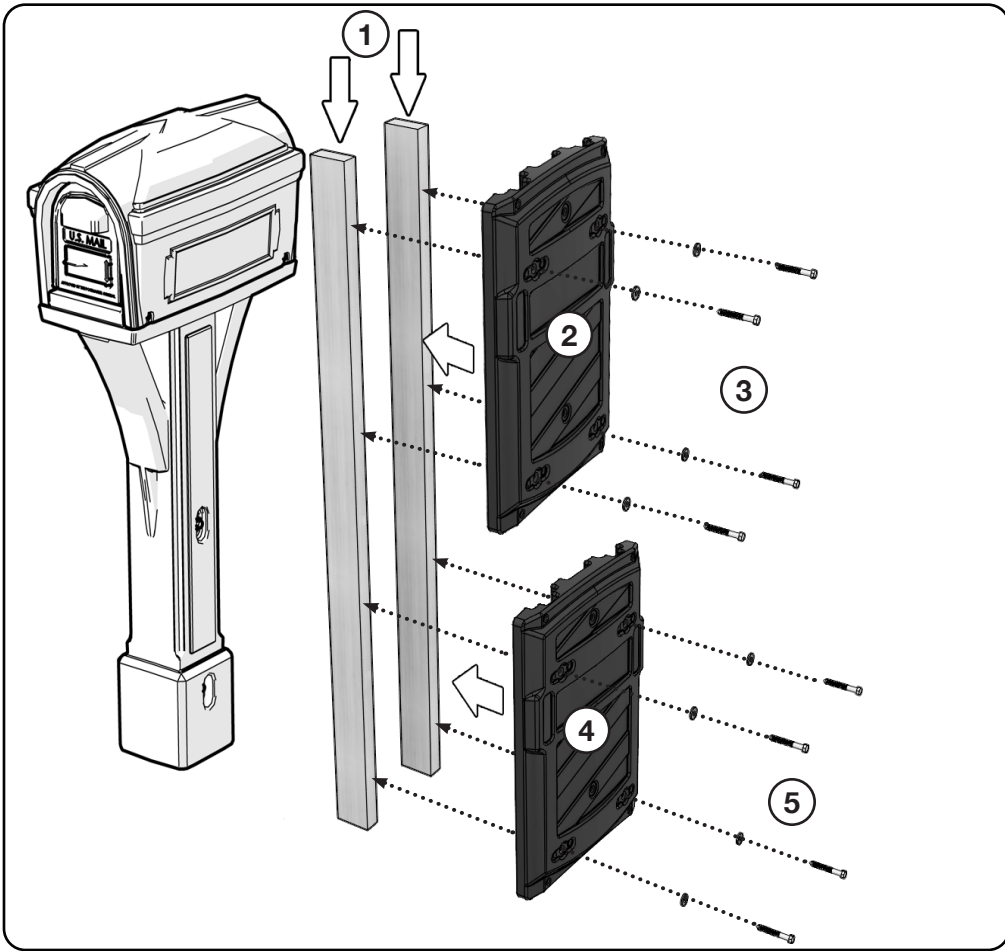
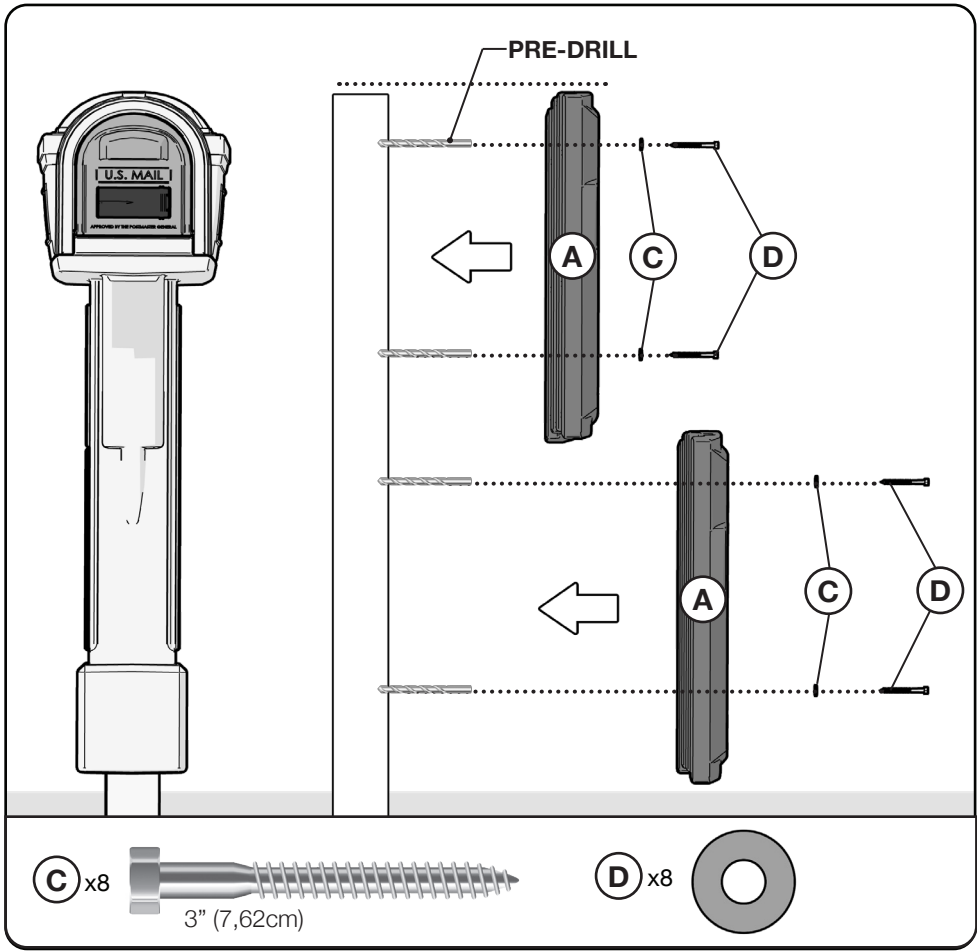
IMPORTANT: MOUNT FLUSH WITH STEEL POSTS



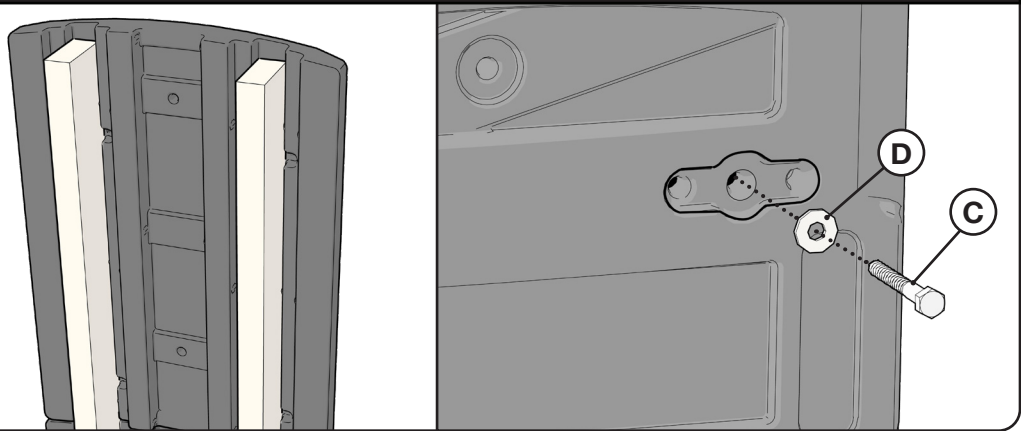
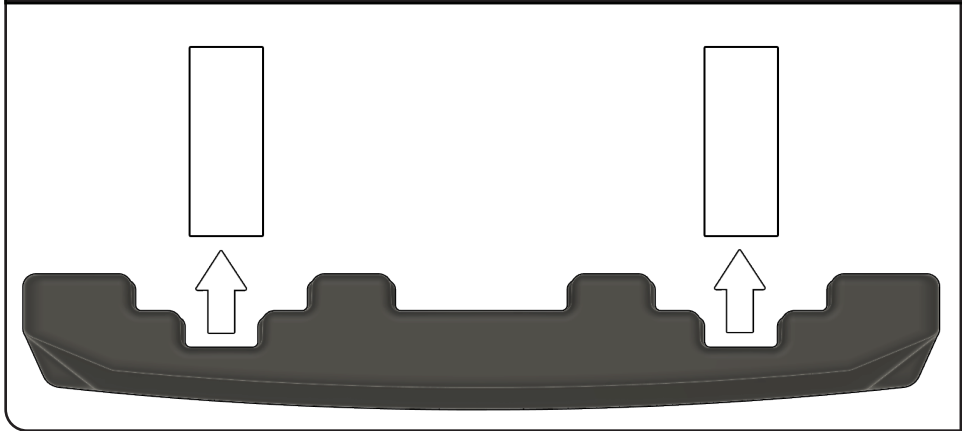
DIGGING PROCEDURE FOR WOODEN POSTS



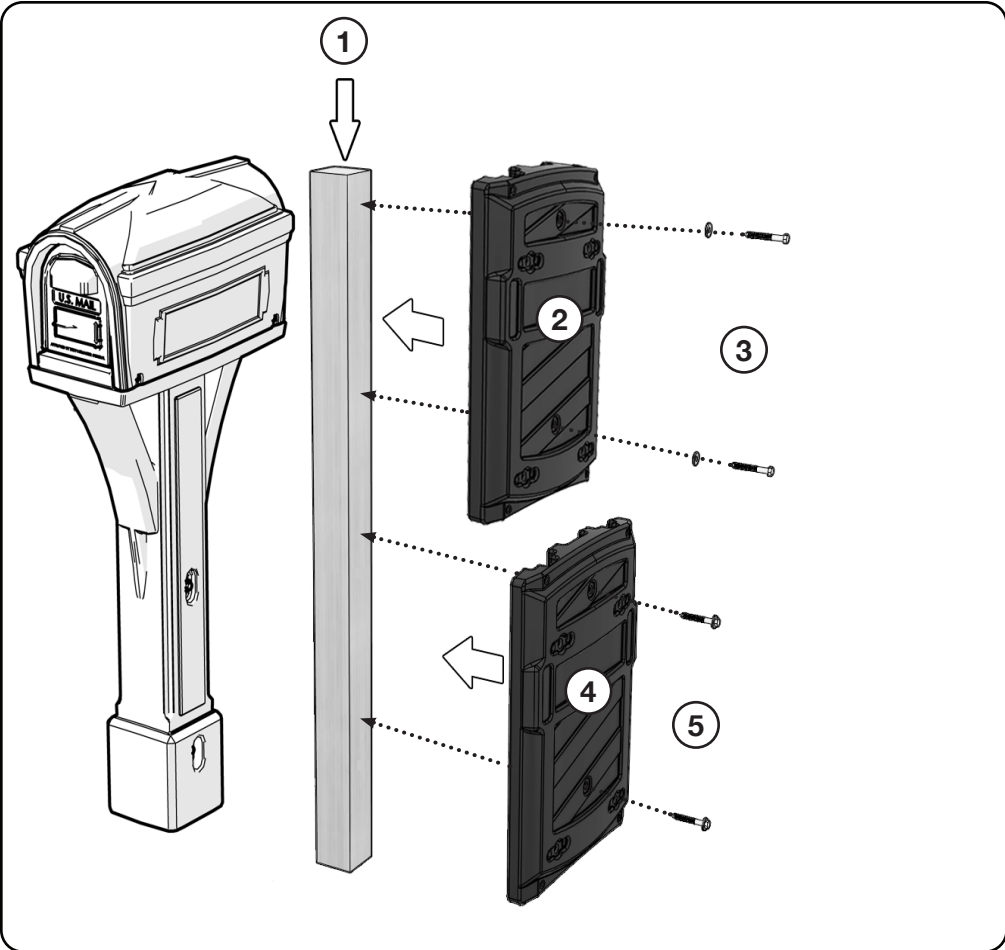
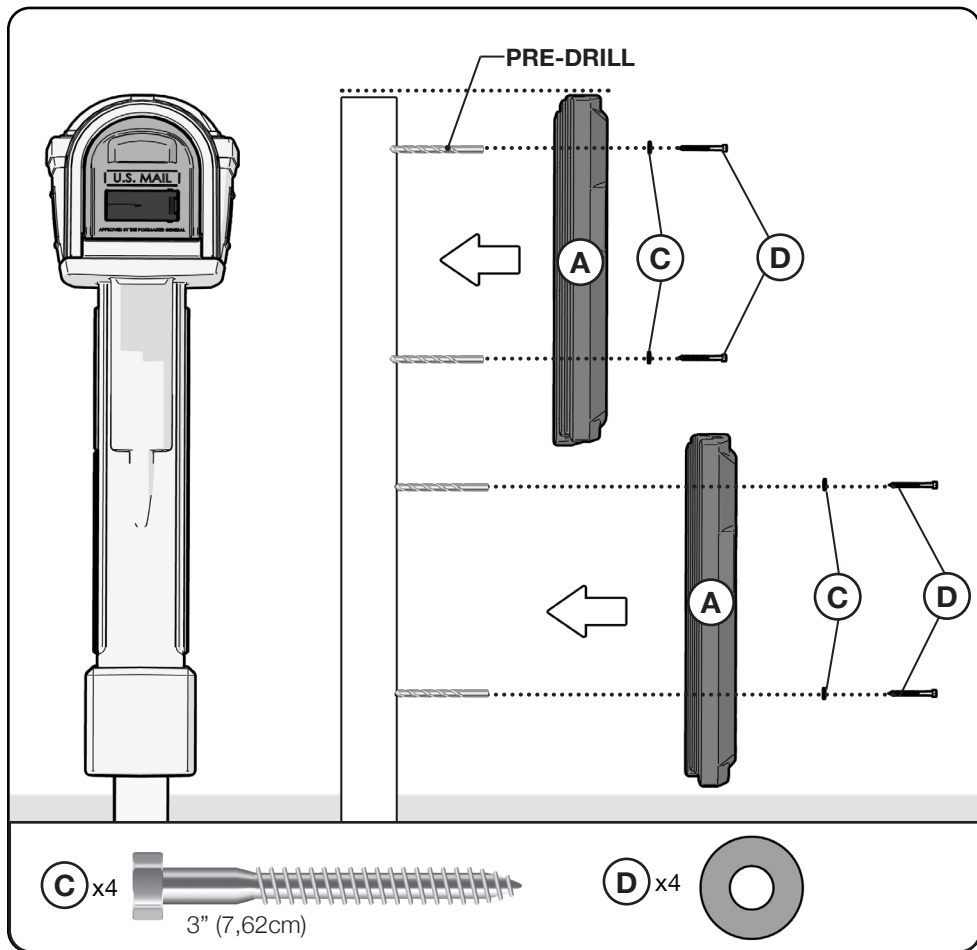
OPTION 2: MEDIUM DUTY APPLICATION - TWO STANDARD 2"X4" POSTS CUT TO MATCH HEIGHT OF MAILBOX (NOT INCLUDED)



IMPORTANT: MOUNT FLUSH WITH 2"X4" POSTS.



OPTION 3: MEDIUM DUTY APPLICATION - ONE STANDARD 4"X4" POST CUT TO MATCH HEIGHT OF MAILBOX (NOT INCLUDED)



IMPORTANT: MOUNT FLUSH WITH 4"X4" POST.

