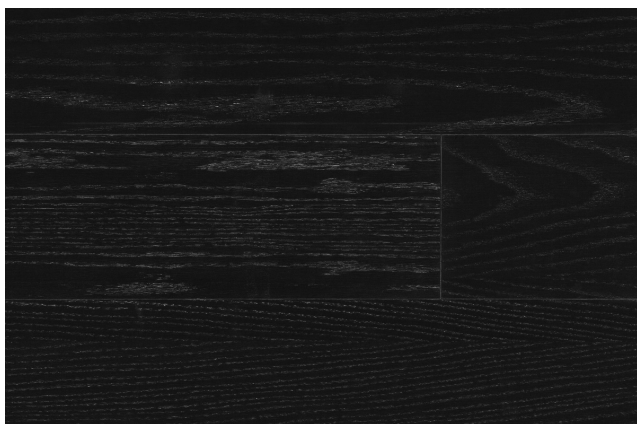


Technical Data Sheet

HW2900 Castres PurePlank

Usage: See Havwoods quick reference guide to choosing the correct floor



Installation Methods

| | |
|-------------------------|---|
| Fully Bonded | No |
| Nailed | No |
| Floated on underlay | Yes* (no underlay required) |
| Over Underfloor Heating | Yes*# (Please ask for our technical guidelines) |

Grading Criteria

Typically, prime grade has few, if any knots, and these will be of minimal size. There will also be a minimal amount of sapwood and filler, if any at all. Where filler is used its colour is selected to complement the wood rather than to match it exactly and the colour of the filler may vary from batch to batch. There will be a relatively small amount of colour variation in the timber itself.

N.B. The product grading criteria is inspected at each mill visually and should be taken as an approximation only. Please ask for further details

Product Details

| | |
|---------------|--|
| Product Code | HW2900 |
| Product Range | PurePlank |
| Construction | HDF Engineered |
| Specie | European Oak (Quercus Robur) |
| Pattern | 1-Strip |
| Process | Brushed |
| Finish | Matt Lacquered |
| Profile | Click System |
| Edge Profile | 4-Sided Bevelled Edge |
| Top Layer | 0.6mm European Oak (Quercus Robur) |
| Backing | Integral Cork backing (Cork) |
| Thickness | 9mm |
| Width | 190mm |
| Length | 1203mm (Fixed length) |
| Pack Size | 2.057m ² |
| Grade | Prime |
| Maintenance | Comprehensive maintenance instructions and materials are available from Havwoods for all floors. |

Technical Criteria

| | |
|--------------------------------|-------------------------------|
| Origin | Europe |
| Responsible Certification | FSC® Certified (FSC-C009500) |
| Janka Hardness Rating | 1,120 lbf (4,980N) |
| Formaldehyde Emission | E1 (EN 717-1:2006) |
| Pentachlorophenol Emission | < 5ppm (CEN/TR 14823) |
| Slip testing | 91/28 PTV (CEN/TS 15676:2007) |
| Reaction to Fire Certification | Cfl-s1 (EN 13501-1) |
| Thermal Conductivity | λ 0.20 W/m K (EN 12664) |



The mark of responsible forestry

* Please note that this is a smoked/fumed product. This reactive process will typically generate a wider range of colour variation in the product.

** Subject to compatible subfloor and correct installation (see Installation Guidelines) including sensors.

** This product may require on-site sanding prior to applying a suitable finish

Temperature of top-face must never be allowed to exceed 27°C. UFH protocol to control temperature conditions is recommended.

‡ Pack lengths will either 1950mm or 2400mm dependant upon stock availability.

Installation and Warranty: All Havwoods floor must be installed by a competent installer who will have the necessary skills and take individual site circumstances into account. Havwoods warranty will apply only to floors which have been installed by a competent flooring installer comparable to BS8201 in the UK or equivalent standards worldwide.

This technical data sheet was written by Havwoods International. At the time of writing and publication of the sheet, all information is specified correctly. The company reserves the right to change the specifications of this product at any time without prior notice to third parties. The photographs use in the sheet are intended only as illustrations. No rights can be derived from them.



Havwoods Limited, Carnforth Business Park, Oakwood Way,
Carnforth, Lancashire LA5 9FD

Tel: +44 (0)1524 737 000; Fax: +44 (0)1524 737 001
info@havwoods.com
www.havwoods.com