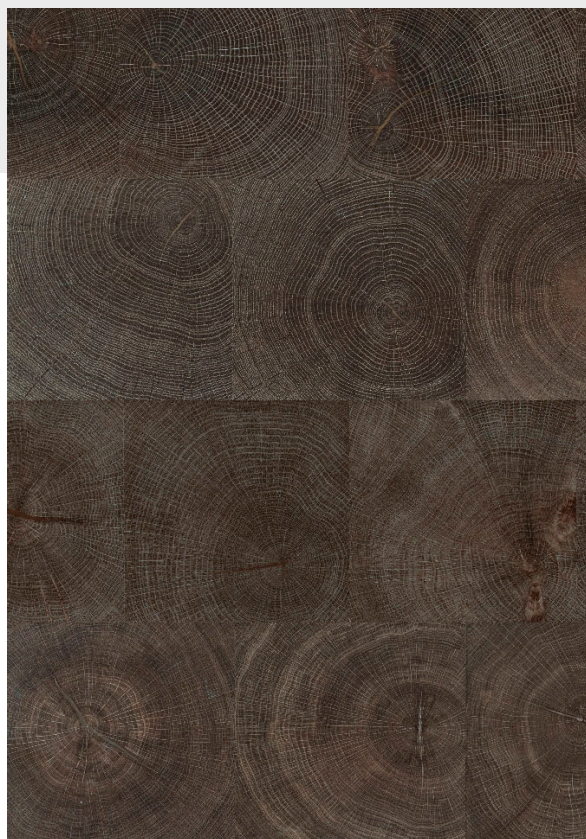


# Technical Data Sheet

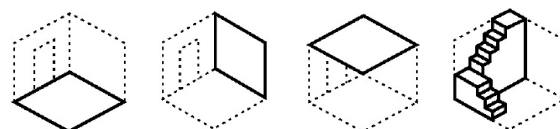
Version 1.0



HW2695

## Hifin

### Henley



#### Specification

Pattern	End Grain Plank
Construction	4-Layered Engineered
Top Layer Specie	European Oak ( <i>Quercus robur</i> )
Surface Process	Sanded
Finish	UV Oiled
Connection System	Tongue & Groove
Edge Profile	Square Edge
Backing	Softwood Veneer ( <i>Picea</i> spp.)
Wear Layer Thickness	4.2mm
Total Thickness	16mm
Width	180mm
Length	2200mm (May include up to 25% shorter boards)
Pack Size	2.77m <sup>2</sup>
Grade	Nature



#### Key:

^ Please note that this is a smoked/ fumed product. This reactive process will typically generate a wider range of colour variation in the product.

\*\* This product may require on-site sanding prior to applying a suitable finish

‡ Pack lengths will vary between the specified minimum and maximum lengths depending upon stock availability.

\* Subject to compatible subfloor and correct installation (see Installation Guidelines) including sensors.

# Temperature of top-face must never be allowed to exceed 27°C. UFH protocol to control temperature conditions is recommended.

## Installation Methods

Fully Bonded	Yes* (recommended)
Nailed/Screwed	Yes*
Floated on Underlay	Yes*
Over Underfloor Heating	Yes* # (Please ask for our technical guidelines)

All Havwoods floor must be installed by a competent installer who will have the necessary skills and take individual site circumstances into account. Havwoods warranty will apply only to floors which have been installed by a competent flooring installer comparable to BS8201 in the UK or equivalent standards worldwide.

## Grading Criteria

Sound Knots	Up to 60mm Øallowed
Broken Knots	Up to 30mm Øallowed
Filled Defects	Allowed
Heart/Pith	Trace
Sapwood	Max 10% of boards / Max 10% width
End Checks	Up to width of board (Max 2mm open)
Insect Damage	Not allowed
Filler	Allowed
Colour Variation	Allowed
Small Cracks	Allowed
Inner Bark	Not allowed

**N.B.** The product grading criteria is inspected at each mill visually and should be taken as an approximation only.

## Technical Criteria

Origin	Europe
Certification	PEFC™ Certified (PEFC/16-37-1417)
Janka Hardness Rating	1,120 lbf (4,980N)
Formaldehyde Emissions	E1 (EN717-1)
Pentachlorophenol Emissions	< 5ppm (CEN/TR 14823)
Slip Testing	86/23 PTV (CEN/TS 15676)
Reaction to Fire Classification	Dfl-s1 (EN 13501-1:2007)
Thermal Resistance	0.23 W/m K (EN 12664)



# HAVWOODS

For More Information  
Contact Our Experienced Team:

Tel: +44 (0)1524 737 000 | Fax: +44 (0)1524 737 001  
Email: [info@havwoods.com](mailto:info@havwoods.com)

Comprehensive maintenance instructions and materials are available from Havwoods for all floors.



This technical data sheet was written by Havwoods International. At the time of writing and publication, all information is specified correctly. The company reserves the right to change the specifications of this product at any time without prior notice to third parties. The photographs used in this document are intended only as illustrations. No rights can be derived from them.

