



Stripping, Scrubbing, Polishing

Machine operators will appreciate the performance, versatility and value of the Hawk Mighty. The 1.0 HP TEFC AC motor and XHD gears deliver huge power in a small and manageable machine. Use the 17" or 20" Mighty for the big jobs.

The 48" Hawk Mighty machine handle is built with a 4-position pin-lock design.

Power

- 1.0 HP, 56C frame, dual capacitor, AC motor
- 115-230V, 50/60 Hz power
- 50 ft. 2-piece 14-3 power cord with molded plug

Drive System

- Triple-planetary severe-duty 11:1 helical-cut industrial gears, case hardened with steel coupler
- Gears drive brushes and pads at 165 RPM

Engineered Design

- All steel construction with welded, powder-coated frame
- 17" and 20" steel brush covers with wraparound bumper
- One piece powder-coated, heavy duty steel handle with 4-position pin lock. Comfortable vinyl-dipped foam handle grips.
- Thumb-operated safety switch
- Negative pressure on/off switch.
- Dual steel operating triggers
- 1" x 5" non-marking ball bearing wheels

Safety Features

- Quiet 64 dB operation. Meets GS42 standard.
- Built with UL Listed components



Hawk Mighty



Specifications

	Mighty 17	Mighty 20
Model	Mighty 17	Mighty 20
Part #	F60-17	F60-20
Size	17"	20"
Pad Size	16"	19"
Speed	165 RPM	165 RPM
Amp Draw	7 Amp	8 Amp
Weight	90 lbs.	93 lbs.

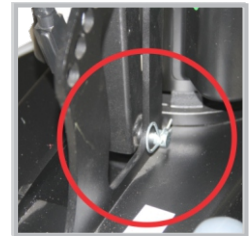
All Models

Motor	1.0 HP, 56 frame, dual capacitor AC motor
Power Source	115-230V, 50/60 Hz power
Power Cord	50 ft. 14-3 SJT power cord w/molded plug
Driver System	Triple-planetary XHD 11:1 helical-cut industrial gears
dB Rating	64 dB - Meets GS42 standard

Subject to Change Without Notice



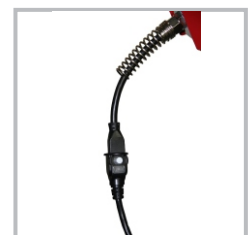
Handle with 4-Position Pin Lock



Remove the Handle Mounting Pin w/o Tools



Optional 2.5-Gallon Solution Tank



Two Piece 14-3 Pig-Tail Power Cord



HAWK Mighty Accessories



Splash Guard
#SPLASH17 - 17"
#SPLASH20 - 20"



Private Branded Machines
7 stock colors plus chrome



4 Gallon Solution Tank



Osprey Sprayer Kit
Motor Mounted Solution Sprayer Pump, 4 Gallon Solution Tank
#TH1010-BRUTE



Tampico Polishing / Scrubbing Brush
#A0004 - 17"
#A0005 - 20"



Stiff Poly Scrub Brush
For general scrubbing
#A0002 - 17"
#A0003 - 20"



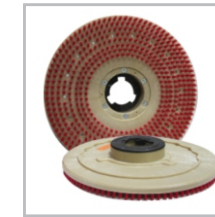
Lite Grit Brush
Scrub with flexible blue 150 grit bristles
#A0008-1 - 17"
#A0009-1 - 20"



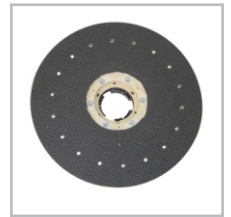
Grit Brush
Strip/scrub with stiff black 80 grit bristles
#A0018 - 17"
#A0038 - 20"



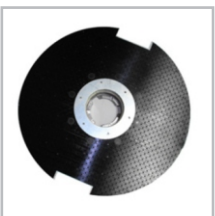
Nylon Carpet Brush
Scrub with soft & stiff nylon bristle mix
#A0006 - 17"
#A0007 - 20"



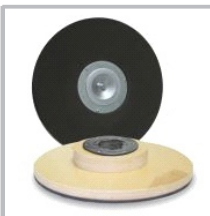
Tufted Stiff Poly Bristle Pad Driver
3/4" long bristles, 3/4" riser
#A0010-4 - 17"
#A0011-3 - 20"



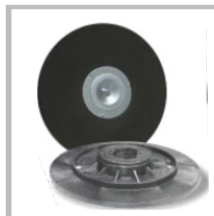
Diamond Pad Driver
#A0010DPD - 17"
#A0011DPD - 20"



Weighted Diamond Pad Driver
Steel block & clutch plate
#A0010WTDPD - 17" (46#)
#A0011WTDPD - 20" (64#)



Premium Sandpaper Driver
Plywood block, cushion pad, 1" riser
#A0014-HD - 17"
#A0014-1HD - 20"



Economy Sandpaper Driver
Molded plastic block, cushion pad, 1" riser
#A0014 - 17"
#A0014-1 - 20"



Surface Prep Scraper
(6) Tungsten steel blades, steel clutch plate
#HP0033 - 17"
#HP0035 - 20"



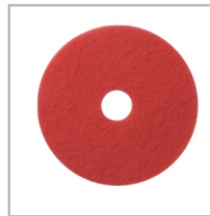
Orbitec Diamond Driver
(6) cups hold 3" diamond tools, steel clutch plate
#HP0017 - 17"
#HP0020 - 20"



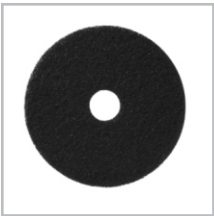
HAWK Claw Diamond Disc Driver
#CLAW17 - 17"
#CLAW20 - 20"



Pad Centering Clamp
Pad mount - 2 piece design
#KIT2013 - Screw lock
#KIT2014 - Spring lock



Red Buffing Pad (5 Pack)
Use at 175-600 RPM for everyday cleaning and light scrubbing.
#A0026-17R-CS - 17"
#A0026-20R-CS - 20"



Black Stripping Pad (5 Pack)
Heavy-duty scrubbing and for removal of 2-4 coats of finish/sealer
#A0026-17BK-CS - 17"
#A0026-20BK-CS - 20"

*Rotary brush blocks are 2" smaller than machine size. Rotary pad driver blocks are 1" smaller than machine size. All have Universal clutch plate.