

### Hawk Enterprises Limited Warranty

Hawk Enterprises Inc. equipment has been manufactured, tested and inspected with carefully engineered requirements. Hawk warrants each new machine, part and accessory to be free of defects in materials and workmanship for a time specified in the table below. Repair or replacement of defective parts or service must be conducted by a Hawk authorized service provider.

**Warranty Start Date:** Warranty coverage starts on the date the machine is installed at the end user's site, or six months from the ship date from the factory, whichever comes first. The distributor who sold you the machine is responsible for completing the registration form at [www.hawkenterprises.com/service\\_registration](http://www.hawkenterprises.com/service_registration).

[www.hawkenterprises.com/service\\_registration](http://www.hawkenterprises.com/service_registration).

This form identifies the machine and records warranty state date.

#### Warranty Coverage - Hawk Air Movers

**Motor and Gearbox** - 1 year

**Non-Wear Items** - 6 months

**Repair Parts** - 90 days

**Service Labor** - 6 months

#### Exceptions and Exclusions from the Limited Warranty

This warranty does not cover repairs resulting from accident, abuse, misuse, damage in transit, or lack of proper maintenance. Equipment must be used with electric current noted on the data plate.

Damages from operation at other voltages or currents will void the warranty.

Certain normal wear parts are consumed in use of this machine, and are not covered by this warranty. These parts include, but are not limited to, cords, switches, bumpers, bearings, isolators, carbon motor brushes, compensators, brushes, pad drivers, bulbs, bags, v-belts and filters. No other warranties extend beyond the terms of this Hawk Limited Warranty, including implied warranty of merchantability or fitness of this machine for a particular use.

#### How to Set Up Warranty Repair

Equipment must be repaired by a Hawk approved service provider; the dealer who sold the new equipment or any Hawk distributor service department in the US. Repairs or alterations made by anyone other than the Hawk factory or a certified repair station, will void the warranty.

The distributor who sold you the machine is responsible for registration of the machine with the factory. With this registration, Hawk will have all of the records required for warranty claim, including records of ownership, date of delivery and resulting warranty dates and terms, distributor's location, machine model, type and serial number. To find the closest service provider, contact Hawk Customer Service at 1-574-294-1910 or [customerservice@hawkenterprises.com](mailto:customerservice@hawkenterprises.com). Warranty claims must be submitted within 30 days of service request.

#### Replacement

In the event of a malfunction resulting in a warranty claim, Hawk, may at its sole option, replace the equipment or warranted part with another new part of equal quality instead of repairing that part.

#### No Refund of Purchase Price

Hawk will not, as a matter of this warranty agreement, refund the end user's purchase price.



V20  
Wet/Dry  
Tank Vacuum



Includes:  
Wet/Dry Tool Kit  
#HPVA002

15' Flexible  
Vacuum Hose

SPECIFICATIONS	
<b>Model</b>	V20
<b>Capacity</b>	20 gallon
<b>Wet Pick Up</b>	16 gallons
<b>Dry Pick Up</b>	1.5 bushel (14 gallons)
<b>Motor</b>	2 HP DC, 2 Stage
<b>Power</b>	115V, 50/60 Hz
<b>Amperes</b>	10.7 Amp
<b>Power Cord</b>	35 ft., 2-Part, 16/3 cord
<b>Water Lift</b>	117 inch
<b>Air Flow</b>	112 CF
<b>Wheels</b>	(2) 6" rear, (2) 3" front
<b>Weight</b>	62 lbs.
<b>Drain Valve</b>	1.5 inch
<b>Dimensions (HxDxW)</b>	37" x 24.25" x 24"
<b>Sound Levels</b>	68 dB

Subject to Change Without Notice



### Cleaning

**WARNING:** To reduce the risk of injury from the tank vacuum accidentally starting, unplug power cord before cleaning. The outside of the unit may be cleaned with a damp cloth to remove any dust or residue.



### User Servicing Instructions

**WARNING:** Be sure to disconnect power supply before attempting to service or remove any components. Do not attempt to service your tank vacuum beyond what is described in the user manual. For all other servicing, follow instructions in the Warranty section.

### Storage & Transportation

1. Unplug the V20 from the outlet when not in use.
2. Unplug when servicing
- 3 Connect to a properly grounded outlet only. See Grounding Instructions.
4. Store indoors. Keep the motor dry.
5. Do not use as a toy.
6. Use only V20 tank vac recommended tools.
7. Do not use with a damaged cord or plug.
8. If the V20 is not working, or has been dropped or becomes wet, contact HAWK for help.
9. Never move by pulling the cord. Move by holding the tank or the handle on top of the motor assembly.
10. Protect the cord from sharp surfaces. Never drive over the power cords. Keep the cord away from hot surfaces.
11. Do not handle plug or vacuum switch with wet hands.
12. Do not pick up smoking or burning debris. Do not collect flammable liquids like gasoline.
13. Do not pick up spilled paints or varnishes. This plugs the motor and violates the warranty.
  14. Do not pick up hazardous debris like asbestos.
  15. Do not use to pick up lead paint debris. This can send fine lead dust into the air. The V20 is not designed for this task.
16. Always use with dust bag and/or filters in place.
17. Do not pick up cement, plaster or drywall dust.
18. Use caution when emptying heavily loaded tanks.
19. Empty tank after each use to prevent spontaneous combustion.
20. Protect your eyes when using this tank vacuum



### Lubrication

NO LUBRICATION IS NECESSARY. The motor is equipped with lifetime lubricated bearings.

### Storage & Transportation

1. Before storing your tank vacuum, it should be cleaned. Rinse the tank, flexible hose and wands. NEVER store the tank vacuum before cleaning. Soils and bacteria can grow and create smells and bacterial wastes.
2. The tank vacuum includes a washable vacuum bag. Inspect for rips or tears. If the bag is wet, rinse and then hang to dry.
3. If your tank vacuum includes optional front-mounted squeegee, rinse the squeegee blade and allow to dry. Keeping the blade clean increases the blade life.
4. Wrap the power cord in the cap provided. Do not coil the cord in a tight loop. Hang the tank vacuum in a dry, well-ventilated area.

HAWK ENTERPRISES - 2902 Park Six Court, Elkhart, IN 46514  
 (574) 294-1910 - www.hawkenterprises.com  
**THE V20 TANK VACUUM SHOULD BE STORED INDOORS.**

### Motor Specifications & Electrical Requirements

This BVP50 has a 2-speed, 115-volt, 60 Hz induction motor with a grounding conductor. Thermally protected, it will automatically shut down if overheated. The motor will restart automatically once cooled, for as long as it is plugged into a power source. In the event of a malfunction or breakdown, grounding provides a path of least resistance for electric current to reduce the risk of electric shock.

This tank vacuum is equipped with an electric cord having an equipment grounding conductor and a grounding plug. The plug must be plugged into a matching outlet that is properly installed and grounded in accordance with all local codes and ordinances. Do not modify the plug provided. If it will not fit the outlet, have the proper outlet installed by a qualified electrician.

### Power Cords

- Use three-pronged adapters that are UL and CE approved and with Ground Fault Circuit Interrupter (G.F.C.I.).
- Do not use cords that show any kind of wear or damage.
- Cords are not covered by warranty



**WARNING!** The Total amperage of the BVP25D Air Mover plus all other devices plugged into the receptacle must not exceed 12 amps.

### Grounding Instructions

The V20 must be grounded. Should it malfunction or break down, grounding provides a path of least resistance for electric current and reduces the risk of electric shock. This appliance is equipped with a cord that has an equipment-grounding conductor and a grounding plug. The plug must be inserted into a properly installed and grounded outlet, in accordance with all local



**WARNING!** Improper connection of the equipment-grounding conductor can result in the risk of an electric shock.



**Use with 115V  
3-Prong Grounded  
Connection**



**DO NOT  
Use with a 3-Prong to  
2-Prong Adapter**

Check with a qualified electrician or service person if you are in doubt as to whether the outlet is properly grounded. Do not modify the plug provided with the appliance. If plug does not fit the outlet, have a proper outlet installed by a qualified electrician.

**NOTE:** In Canada, the use of a temporary adapter is not permitted by the Canadian Electrical Code

**ATTENTION!**

Read all safety rules carefully before attempting to operate the BVP50H. Please retain this manual for future reference.

NEVER operate this unit when flammable materials or vapors are present -- electrical devices produce arcs or sparks which may cause a fire or an explosion..

NEVER operate this unit unattended.



**WARNING:** Be sure to disconnect power supply before attempting to service or remove any components. Do not attempt to service your tank vacuum beyond what is described in the user manual. For all other servicing, follow instructions in the Warranty section.

**USE INSTRUCTION**

- Unplug the V20 from the outlet when not in use.
- Unplug when servicing and cleaning
- Connect to a properly grounded outlet only. See Grounding Instructions.
- Store indoors. Keep the motor dry.
- Do not use as a toy.
- Use only V20 tank vac recommended tools.
- Do not use with a damaged cord or plug.
- If the V20 is not working, or has been dropped or becomes wet, contact HAWK Customer Service for instruction.
- Never move by pulling the cord. Move by holding the tank or the handle on top of the motor assembly.
- Protect the cord from sharp surfaces. Never drive over the power cords. Keep the cord away from hot surfaces.
- Do not handle plug or vacuum switch with wet hands.
- Do not pick up smoking or burning debris. Do not collect flammable liquids like gasoline.
- Do not pick up spilled paints or varnishes. This plugs the motor and violates the warranty.
- Do not pick up hazardous debris like asbestos.
- Do not use to pick up lead paint debris. This can send fine lead dust into the air. The V20 is not designed for this task.
- Always use with dust bag and/or filters in place.
- Do not pick up cement, plaster or drywall dust.
- Use caution when emptying heavily loaded tanks.
- Empty tank after each use to prevent spontaneous combustion.
- Protect your eyes when using this tank vacuum

**WARNING!**

- To reduce the risk of electric shock, connect only to a GFCI protected outlet. Do not expose to water

**CAUTION**

- This air mover has an automatic motor shutoff device. It may restart without notice.
- To reduce the risk of injury, unplug before servicing.

**USE INSTRUCTION**

- **NO LUBRICATION IS NECESSARY.** The motor is equipped with lifetime lubricated bearings.
- Before storing your tank vacuum, it should be cleaned. Rinse the tank, flexible hose and wands. NEVER store the tank vacuum before cleaning. Soils and bacteria can grow and create smells and bacterial wastes.
- The tank vacuum includes a washable vacuum bag. Inspect for rips or tears. If the bag is wet, rinse and then hang to dry.
- If your tank vacuum includes optional front-mounted squeegee, rinse the squeegee blade and allow to dry. Keeping the blade clean increases the blade life.
- Wrap the power cord around the carry handle on top of the unit to keep it untangled.
- **THE V20 TANK VACUUM SHOULD BE STORED INDOORS. NEVER WASH THE MOTOR HEAD ASSEMBLY WITH WATER HOSE**

**SERVICING**

- In order to receive service or replacement parts under warranty, you must Call (574) 294-1910 for an RMA (Return Merchandise Authorization Number)
- Upon inspection, we will advise you of the repairs needed and the cost (if applicable). Hawk will issue repair or replacement parts depending on warranty.

## Problem Solving

### Tools or Accessories Missing

These may be packed or stored in the tank. Check the tank.

### Vacuum Will Not Start

No power at the wall plug. Check for power.

Broken on/off switch. Replace switch.

Damaged motor. Contact Hawk Customer Service for directions

### Motor "Hums" or Sparks When Switched On

Blocked or damaged motor. Contact Hawk Customer Service.

### Dust Comes Out of Exhaust

No filter or filter is incorrectly installed. Correct filter installation

Filter is damaged. Inspect for rips or tears. Replace.

If the bag is ripped, order replacement **#HPWDH0001ASSY**.

Filter is clogged. Wash, rinse, dry.

### No Suction / Poor Suction

Loose flexible vacuum hose. Tighten.

Leaking hose mount on tank. Tighten or replace.

Clogged filter. Wash, rinse, dry.

Tank is full. Empty.

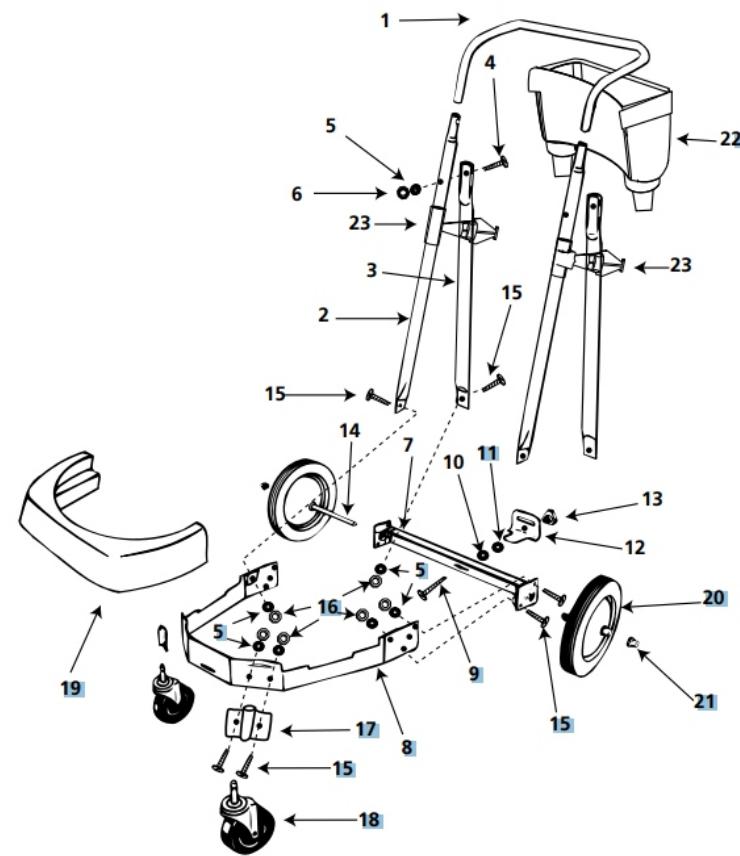
## V20 Tools



15' Flexible  
Vacuum Hose  
**#HPVT1060**

Wet/Dry Tool Kit  
**#HPVA002**

Washable Cloth  
Vacuum Bags  
**#HPWDH0001ASSY**



- |  |  |
|--|--|
| 1. Handle  | 12. Tank retainer bracket                  |
| 2. Handle upright                                  | 13. Threaded knob                          |
| 3. Handle brace                                    | 14. Axle                                   |
| 4. 1/4 - 20 x 11/4" Hex head machine screw (Black) | 15. 1/4 - 20 x 5/8" Hex head machine screw |
| 5. 1/4" External tooth lockwasher                  | 16. 1/4 - 20 Hex nut                       |
| 6. 1/4 - 20 Hex nut (Black)                        | 17. Caster socket                          |
| 7. Rear dolly frame                                | 18. Caster                                 |
| 8. Main dolly frame                                | 19. Bumper                                 |
| 9. 5/16 - 18 x 21/2" Hex head bolt                 | 20. 10" Wheel (25.4cm)                     |
| 10. 5/16" Split lockwash                           | 21. Cap nut                                |
| 11. 5/16 - 18 Hex nut                              | 22. Accessory basket                       |
|  | 23. Basket adapter                         |