

English
Français
Español
Português



AirFit™ F30i

USER GUIDE



Device setting

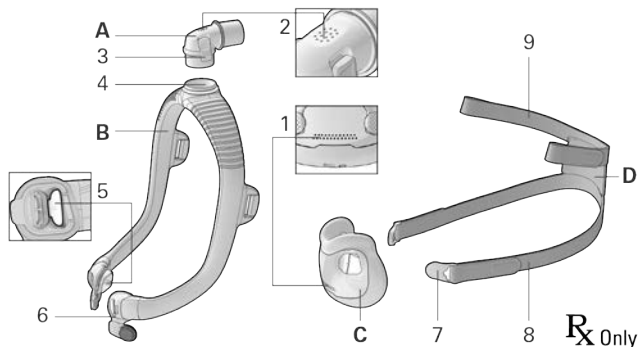
Full face



Full face
mask

ENGLISH

Thank you for choosing the AirFit™ F30i full face mask. This mask uses a cushion that seals under the nose and around the mouth, and a frame with a tube connection above the head. To breathe fresh air, this mask features vent holes in the cushion and elbow, and valves in the frame.



- | | | | |
|---|----------------------|---|--------------------------------------------------------------------|
| A | Elbow | 4 | Elbow ring |
| B | Frame | 5 | Anti-Asphyxia valve (inside the left and right of frame connector) |
| C | Cushion | 6 | Frame connector |
| D | Headgear | 7 | Magnetic clip |
| 1 | Vent holes (cushion) | 8 | Lower headgear strap |
| 2 | Vent holes (elbow) | 9 | Upper headgear strap |
| 3 | Side button | | |

Intended Use

The AirFit F30i mask is intended to be used by patients weighing more than 66 lb (30 kg) who have been prescribed non-invasive positive airway pressure (PAP) therapy such as CPAP or bi-level therapy. The mask is intended for single patient re-use in the home and multi-patient re-use in the hospital/institutional environment.

Contraindications

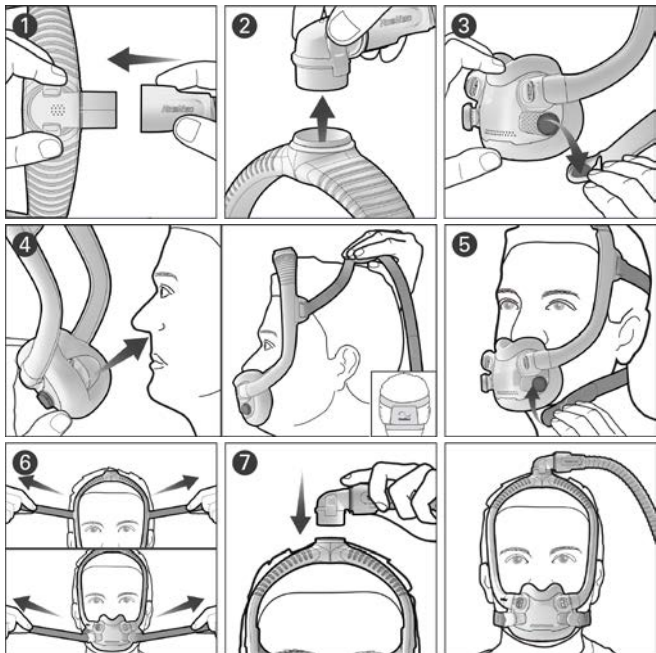
Use of masks with magnetic components is contraindicated in patients with the following pre-existing conditions:

- a metallic hemostatic clip implanted in your head to repair an aneurysm
- metallic splinters in one or both eyes.

Before using your mask

Remove all packaging and inspect each mask component for visible deterioration.

Fitting your mask



1. Connect the air tubing from your device to the elbow.
2. Squeeze the side buttons on the elbow and pull from the frame. Put the elbow and air tubing aside for now.
3. Twist and pull both magnetic clips away from the frame connectors.
4. Place the cushion under your nose and ensure it sits comfortably against your face. With the ResMed logo on the headgear facing up, pull the headgear and frame over your head.
5. Bring the lower headgear straps under your ears and attach the magnetic clips to the frame connectors.
6. Undo the fastening tabs on the upper headgear straps and pull evenly. Repeat with the lower headgear straps.
7. Attach the elbow to the top of the frame. Your mask should now be positioned as shown.

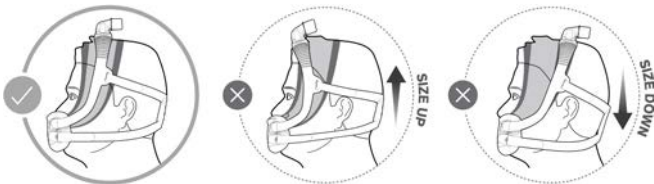
Adjusting your mask

- With the device turned on and blowing air, adjust the position of the cushion for the most comfortable seal under your nose. Ensure that the cushion is not creased and the headgear is not twisted.
- To fix any mask leaks, adjust the upper or lower headgear straps. Adjust only enough for a comfortable seal and do not overtighten.

Sizing the mask

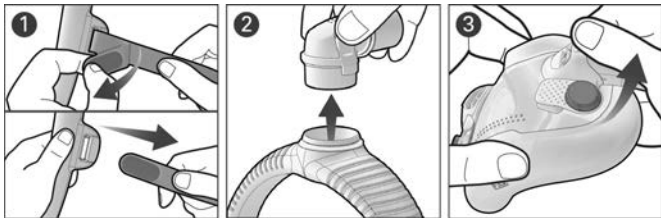
Use the fitting template to assist in selecting the right size cushion.

If the mask frame falls back over your head or sits too close to your ears, try a smaller frame size. If the mask falls forward on your head or sits too close to your eyes, try a bigger frame size.



Disassembling your mask for cleaning

If your mask is connected to a device, disconnect the device air tubing from the mask elbow.



1. Undo the fastening tabs on the upper headgear straps and pull from the frame. Keep the magnetic clips attached to the lower headgear straps.
2. Squeeze the side buttons on the elbow and detach from the frame.
3. Grip the frame connector and lift to unclip from the cushion. Repeat on the other side.

Cleaning your mask

If there is any visible deterioration of a mask component (cracking, crazing, tears etc.) the component should be discarded and replaced.

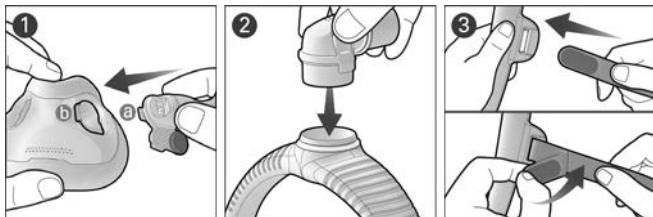
Daily/After each use: Cushion

Weekly: Headgear, frame and elbow

1. Soak the components in warm water with a mild liquid detergent.
2. Hand wash the components with a soft bristle brush. Pay particular attention to the vent holes in both cushion and elbow.
3. Thoroughly rinse the components under running water.
4. Leave the components to air dry out of direct sunlight.

If the mask components are not visibly clean, repeat the cleaning steps. Make sure that the vent holes and anti-asphyxia valves are clean and clear.

Reassembling your mask



1. Align and insert the frame connector tab (a) into the cushion slot (b) and press down until it clicks. Repeat on the other side.
2. Attach the elbow to the top of the frame until it clicks.
3. With the ResMed logo facing outwards and up, insert the upper headgear straps into the frame from the inside and fold the fastening tabs over to secure.

Note: If the elbow ring detaches, re-insert into the top of the frame.

WARNING

- Magnets are used in the lower headgear straps and the frame of the mask. Ensure the headgear and frame is kept at least 2" (50 mm) away from any active medical implant (eg, pacemaker or defibrillator) to avoid possible effects from localized magnetic fields. The magnetic field strength is less than 400 mT.
- The mask contains safety features, the exhaust vent holes and anti-asphyxia valves, to enable normal breathing and exhaust exhaled breath. Occlusion of the exhaust vent holes or anti-asphyxia valves needs to be prevented to avoid having an adverse effect on the safety and quality of the therapy. Regularly inspect the vent holes and anti-asphyxia valves to ensure they are kept clean, clear of blockages and are not damaged.
- Only use compatible CPAP or bi-level therapy devices or accessories. The technical specifications of the mask are provided for healthcare professionals to determine compatible devices. Use in combination with incompatible medical devices can decrease the safety or alter the performance of the mask.
- The mask is not suitable for patients requiring life support ventilation.
- Regularly clean your mask and its components to maintain the quality of your mask and to prevent the growth of germs that can adversely affect your health.

WARNING

- The mask must be used under qualified supervision for patients who are unable to remove the mask by themselves. The mask may not be suitable for those prone to aspiration.
- The mask should not be used unless the device is turned on. Once the mask is fitted, ensure the device is blowing air to reduce risk of rebreathing exhaled air.
- Discontinue using or replace this mask if the patient has ANY adverse reaction to the use of the mask. Consult your physician or sleep therapist.
- The mask is not intended to be used simultaneously with nebulizer medications that are in the air path of the mask/tube.
- If there is any visible deterioration of a mask component (cracking, crazing, tears etc.) the component should be discarded and replaced.

CAUTION

- Always follow cleaning instructions and only use a mild liquid detergent. Some cleaning products may damage the mask, its parts and their function, or leave harmful residual vapours. Do not use a dish washer or washing machine to clean the mask.
- When fitting the mask, do not overtighten the headgear as this may lead to skin redness or sores around the mask cushion.
- As with all masks, some rebreathing may occur at low pressures.
- Using a mask may cause tooth, gum or jaw soreness or aggravate an existing dental condition. If symptoms occur, consult your physician or dentist.
- Do not iron the headgear as the material is heat sensitive and will be damaged.

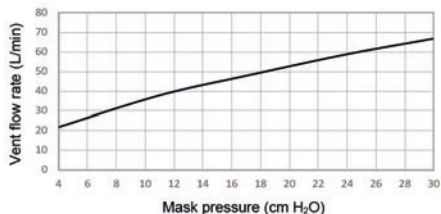
Technical specifications

Mask setting options: For AirSense, AirCurve or S9: Select 'Full Face'.

Compatible devices: For a full list of compatible devices for this mask, see the Mask/Device Compatibility List at ResMed.com/downloads/masks.

SmartStop may not operate effectively when using this mask with some CPAP or bi-level devices.

Pressure-flow curve



Pressure (cm H ₂ O)	Flow (L/min)
4	22
11	38
17	48
24	59
30	67

Therapy pressure: 4 to 30 cm H₂O

Resistance with Anti Asphyxia Valve closed to atmosphere

Drop in pressure measured (nominal) at 50 L/min: 0.2 cm H₂O

Drop in pressure measured (nominal) at 100 L/min: 1.0 cm H₂O

Resistance with Anti Asphyxia Valve open to atmosphere

Inspiration at 50 L/min: 0.2 cm H₂O

Expiration at 50 L/min: 0.4 cm H₂O

Anti-Asphyxia Valve open-to-atmosphere pressure: <4 cm H₂O

Anti-Asphyxia Valve closed-to-atmosphere pressure: <4 cm H₂O

Sound: Declared dual-number noise emission values in accordance with ISO4871:1996 and ISO3744:2010. A-weighted sound power level is 25 dBA, with uncertainty of 3 dBA. A-weighted pressure level at a distance of 1 m is 18 dBA, with uncertainty of 3 dBA.

Environmental conditions

Operating temperature: 41°F to 104°F (5°C to 40°C)

Operating humidity: 15% to 95% RH non-condensing

Storage and transport temperature: -4°F to 140°F (-20°C to +60°C)

Storage and transport humidity: up to 95% RH non-condensing

International Commission on Non-Ionizing Radiation Protection (ICNIRP)

Magnets used in this mask are within ICNIRP guidelines for general public use.

Service life: The service life of the mask system is dependent on the intensity of usage, maintenance, and environmental conditions to which the mask is used or stored. As this mask system and its components are modular in nature, it is recommended that the user maintain and inspect it on a regular basis, and replace the mask system or any

components if deemed necessary or according to the instructions in the 'Cleaning your mask' section of this guide.

Accessories: Soft sleeves are available as an accessory,

Storage

Ensure that the mask is thoroughly clean and dry before storing it for any length of time. Store the mask in a dry place out of direct sunlight.

Disposal

This mask does not contain any hazardous substances and may be disposed of with your normal household refuse.

Reprocessing the mask between patients

Only Sleep Lab Mask (SLM) variants of the mask system are intended for multi-patient re-use. When using between patients, these masks must be reprocessed according to instructions available on [ResMed.com/downloads/masks](https://www.resmed.com/downloads/masks).

Symbols

The following symbols may appear on your product or packaging:



Full Face Mask

Full face mask



Device Setting
Full Face

Device setting- Full face



Small frame

Small frame



Standard frame

Standard frame



Large frame

Large frame



Cushion size - small



Cushion size - medium



Cushion size - small wide



Cushion size - wide



Caution, consult accompanying documents.

Rx Only

Prescription only (In the US, Federal law restricts these devices to sale by or on the order of a physician.)

See symbols glossary at [ResMed.com/symbols](https://www.resmed.com/symbols).

Limited warranty

ResMed Ltd (hereafter 'ResMed') warrants that your ResMed mask system (including mask frame, cushion, headgear and tubing) shall be free from defects in material and workmanship from the date of purchase for the period of 90 days or in the case of disposable masks the maximum use period. This warranty is only available to the initial consumer. It is not transferable. If the product fails under conditions of normal use, ResMed will repair or replace, at its option, the defective product or any of its components. This limited warranty does not cover: a) any damage caused as a result of improper use, abuse, modification or alteration of the product; b) repairs carried out by any service organization that has not been expressly authorized by ResMed to perform such repairs; and c) any damage or contamination due to cigarette, pipe, cigar or other smoke. Warranty is void on product sold, or resold, outside the region of original purchase. Warranty claims on defective product must be made by the initial consumer at the point of purchase.

This warranty replaces all other expressed or implied warranties, including any implied warranty of merchantability or fitness for a particular purpose. Some regions or states do not allow limitations on how long an implied warranty lasts, so the above limitation may not apply to you.

ResMed shall not be responsible for any incidental or consequential damages claimed to have resulted from the sale, installation or use of any ResMed product. Some regions or states do not allow the exclusion or limitation of incidental or consequential damages, so the above limitation may not apply to you. This warranty gives you specific legal rights, and you may also have other rights which vary from region to region. For further information on your warranty rights, contact your local ResMed dealer or ResMed office.