

# RADIANCE PANELS

Superior Choice For a Premium Finish



Proudly Distributed By

**HARDWOODS**<sup>®</sup>  
HARDWOODS SPECIALTY PRODUCTS

# WHICH RADIANCE PANEL IS BEST FOR YOU

49" x 109" – ¾" thick

## HIGH GLOSS PANELS (PET) Polyester

Integral Color | Superior Scratch & Mar Resistance | UV Stability

- Available as G1S or G2S
- Fantastic depth of color
- Mirror like finish with a perfect 91% Gloss Level
- Economically create high end cabinet components
- Available in Super Scratch Resistant (SSR) hard coat finish
- Perfect for micro-living, single residence and multifamily cabinetry applications
- FSC® available on request
- Protected by a peel coat

49" x 109" – ¾" thick

## SUPER MATTE PANELS (PET) Polyester

Integral Color | Superior Scratch & Mar Resistance | Anti Finger Print Surface

- Features rich colors on a fine matte finish
- Provides a lustrous feel to create top flight cabinetry and millwork
- Available in hard coat finish with excellent scratch, mar, and stain resistance
- Premium surface with anti-finger print protection
- Perfect for micro-living, single residence and multifamily cabinetry applications
- FSC® available on request
- Protected by a peel coat

49" x 109" – ¾" thick

## MATTE PVC PANEL

Does not include peel coat – a low cost alternative to fit your needs

- Features rich color on a fine matte finish
- Provides a lustrous feel to create top flight cabinetry and millwork
- Perfect for micro-living, single residence and multifamily cabinetry applications

## UNFINISHED EDGE PANELS

- Available on G1S and G2S panels
- Matching edgebanding available
- Core: Premium MDF
- G1S back is colour matched TFL
- No minimum order size
- Minimum piece size 4" x 4"
- FSC® available on request

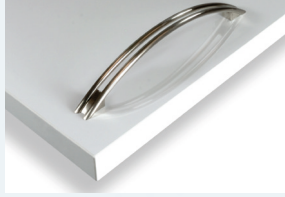
## FUSION EDGEBANDED PANELS OR COMPONENTS

- Available on G1S and G2S panels
- Ready-to-use
- No minimum order size
- Core: Premium MDF
- G1S back is matched TFL
- Matching edgebanding is available
- Minimum dimensions: 4" x 4"
- FSC® available on request
- Protected by peel coat on the face and fusion edgebanded items

# CHOOSE THE BEST AVAILABLE OPTION FOR YOU



Alaska White



Essential Grey



Gun Metal

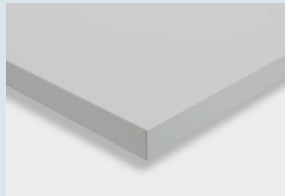


Black

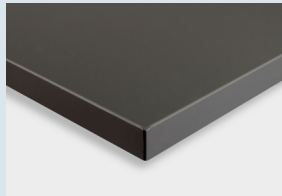
HIGH GLOSS



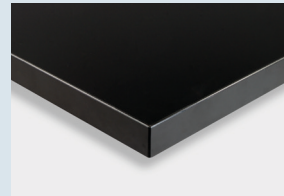
Bright White



Essential Grey



Gun Metal



Black

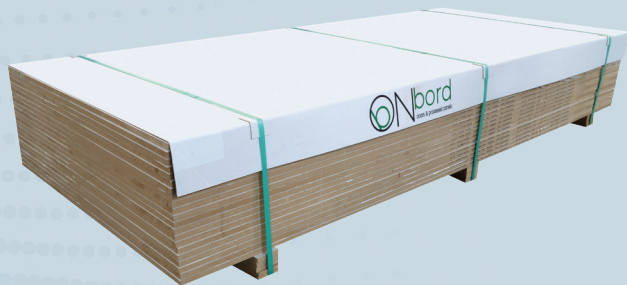
SUPER MATTE



Pure White PVC\*

PVC

\* No peel coat



**Radiance Panels  
Ready For Fabrication  
4' x 9'**



**CTS Radiance Panels  
Ready For Use**



# RADIANCE PANELS

IDEAL FOR:



Residential  
Furniture



Kitchen  
Cabinets  
& Wall Panels



Architectural  
Interiors



Store Fixture  
& Display  
Components



Proudly Distributed by

**HARDWOODS®**  
Materials That Inspire

888-826-5528  
hardwoods-inc.com | www.hardwoods.online

Specification Support by

**Design one Source®**  
*Where Inspiration and Design Meet Supply*

866-599-1433  
designonesource.com