

“The more difficult the victory, the greater the happiness in winning.”
Pele, Brazilian retired professional football player.

January 2021

RUGBY[®]
Architectural Building Products

855-650-3265

GREENLAM LAMINATES



Greenlam High Pressure Laminate

- Largest range of designs based on the latest trends.
- 35 different finishes to choose from.
- Tough and easy to look after surfaces with Anti Bacterial protection.

HD Gloss Advantages

Maintains the gloss level 3 times that of ordinary gloss laminate.

Custom Digital Laminate

Gives spaces your unique identity.

AFX Anti-Fingerprint Laminate Advantages

Luxurious, satin feel.

Lab Guardian

Designed to shield surfaces from harsh chemicals and cleansing agents.

Unicore

Laminate with color throughout to remove black lines from your edge.

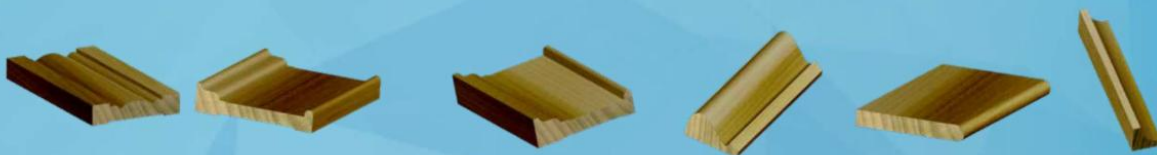
True Metals

Full line of Decorative Metal sheets. Flawlessly polished or brushed.



RUGBY HAS A WIDE SELECTION OF MOULDINGS

Over 3,000 Profiles Available For Any Task At Hand



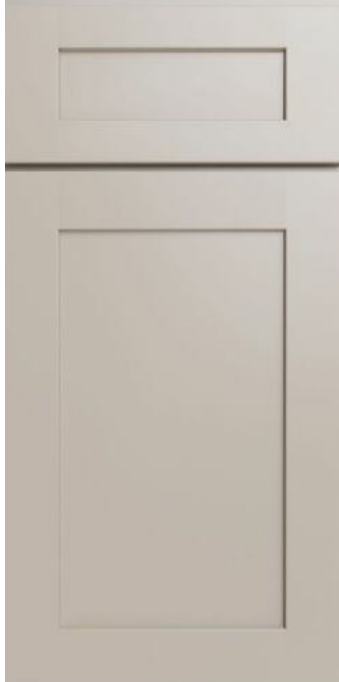
CHOICE ADHESIVES

Choice adhesives are a favorite with craftsman who want performance, speed, affordable assembly products that allows them to work at high production speeds and also offers labor and time savings. Choice adhesives have proven over time to exceed industry standards for performance in markets such as furniture, woodworking and flooring markets. The product array includes water and solvent base adhesives that are available in a variety of packaging.



NEW COLOR COMING THIS FEBRUARY!

Introducing Shaker Sand!



Shaker Sand's timeless design and neutral, warm paint color will remain a classic. It is a great complement for any designer's install plan.

Shaker Sand works with almost every color!



Rugby for Cabinets!

Quality

Our cabinets are manufactured to the highest industry standards.

Design

Offering a variety of styles, colors and accessories, our cabinets are built to fit any unique style.

Service

Consistent availability, on time delivery, and customer service that exceeds expectations.



MORE THAN WOOD



Cave-like wooden hotel features a thousand pieces of hand-cut spruce

More than 1,100 hand-cut spruce wood panels line the walls of Greece's Wooden Cave hotel, located 3,600 feet above sea level off the slopes of the country's Mount Kyllini. Each suite is split in half design-wise. The rear-half is primarily made of curved wood and is made to feel like a protective outer shell - similar to the walls of a cave. The other half is designed to be more inviting, featuring a more linear and traditional design.

Credit: Woodworking Network

[Read more](#)

INDUSTRY NEWS

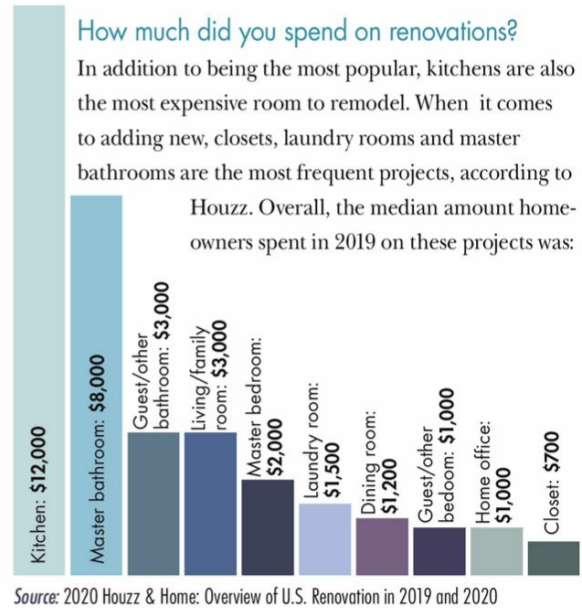
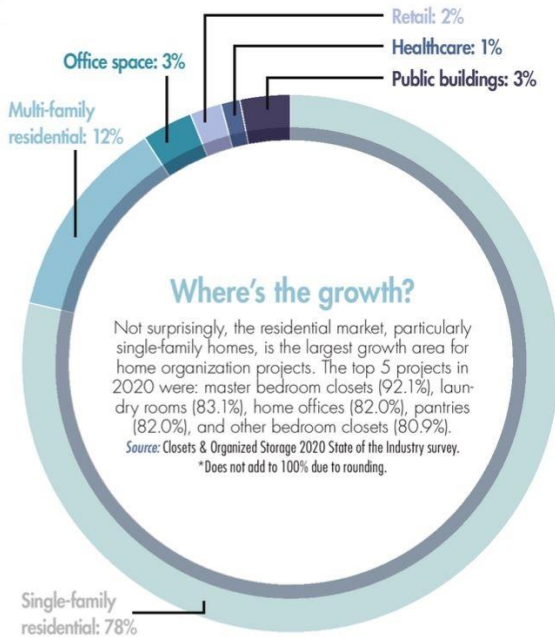
U.S. Kitchen and Bath Sales Mixed in November

U.S. kitchen and bath cabinet sales in November 2020 were 8.3% higher than the comparable month in 2019 but fell 9.2% from October, according to the Kitchen Cabinet Manufacturers Association's (KCMA) monthly Trend of Business member survey. Year-to-date cabinet sales rose 1.2% from the year-ago period. [read more](#)

5 Key Color Trends for 2021

With an emphasis on homes as sanctuaries comes a greater desire for living healthy and wellness — and color is a big contributor to interior ambience. Cultivating nature-inspired spaces with biophilic design elements, natural light and calmness resulted in 2021's color trends. [read more](#)

The Surge in Remodeling During the Pandemic Bodes well for the Home Organization Industry.



VIEW OUR INTERACTIVE BROCHURE



CONTACT OUR CUSTOMER SERVICE TEAM

Join the Conversation:

