



CINCINNATI

Paxton Estate Mouldings

GAIN THE PAXTON
ADVANTAGE!





Paxton's modern equipment and experienced mill staff create beautifully crafted mouldings quickly and cost effectively.

ARCHITECTURAL MOULDINGS

Custom millwork is our specialty. From traditional baseboard and casing to custom architectural profiles, our experienced personnel are able to produce mouldings in almost any hardwood or softwood species.

INVENTORY

We stock millions of dollars of product that is immediately available. Let our warehouse be an extension of your business.

SANDING

Custom or Stock Mouldings
Profile Sanding
Flat Sanding

PLANING

Our planer combines two machines and operations: a Facing Planer and a Surface Planer. This allows Paxton to plane both sides of lumber, reducing it to a uniform thickness while removing the warps and twist in most boards 10' and shorter.

GANG RIPPING

Customers with moulding capabilities can benefit from our gang rip service. Blanks ripped to width tolerance, with square clean edges are also an economical substitute when short runs of S4S are needed.



S4S for immediate shipment or pick-up

STOCKED SPECIES:

- ▶ Poplar
- ▶ Maple
- ▶ Red Oak



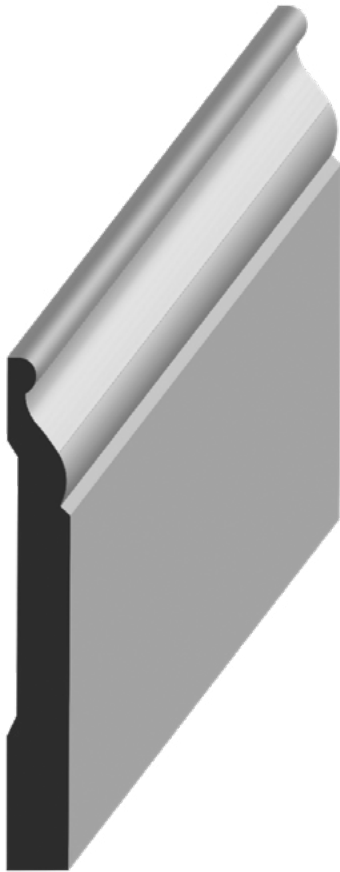
SIZES:

- | | | |
|-----------------|-----------------|------------------|
| ▶ 3/4" x 1-1/2" | ▶ 3/4" x 5-1/2" | ▶ 3/4" x 9-1/4" |
| ▶ 3/4" x 2-1/2" | ▶ 3/4" x 7-1/4" | ▶ 3/4" x 11-1/4" |
| ▶ 3/4" x 3-1/2" | | |

SIZES IN EACH SPECIE MAY VARY
ADDITIONAL THICKNESSES & WIDTHS AVAILABLE UPON REQUEST

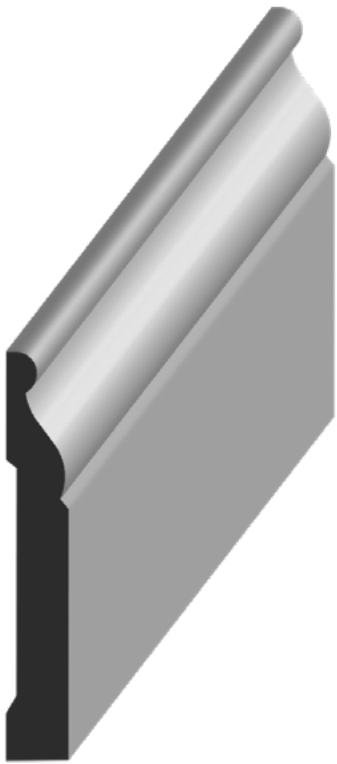
BASE

✓ MANY ADDITIONAL SPECIES AND GRADES AVAILABLE UPON REQUEST



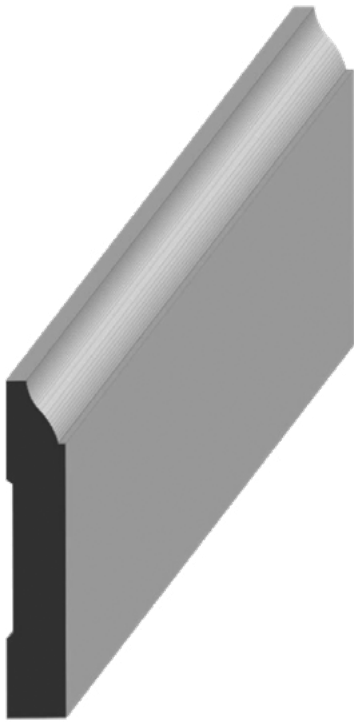
P-1235
5/8" x 5-1/4"
• Poplar • Red Oak

Not to scale



P-1235
5/8" x 5-1/4"
• Poplar • Red Oak

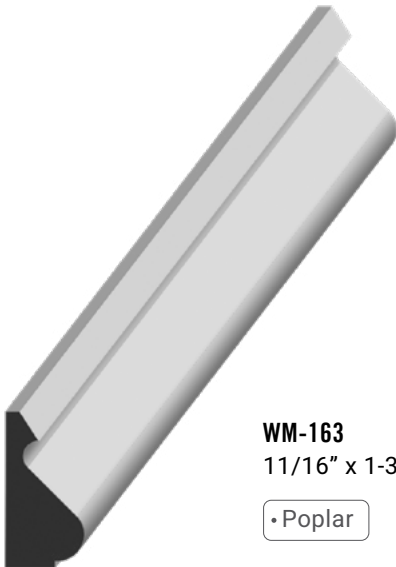
Not to scale



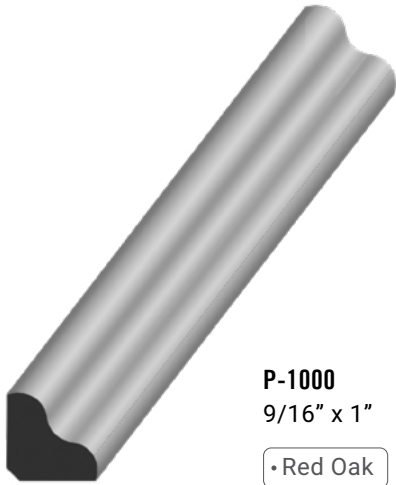
WM-623
9/16" x 3-1/4"
• Poplar • Red Oak

Not to scale

BASE CAP & SHOE



WM-163
11/16" x 1-3/8"
• Poplar



P-1000
9/16" x 1"
• Red Oak



WM-126
1/2" x 3/4"
• Poplar • Red Oak

STOCKED SPECIES

Wormy Maple

Rift White Oak

Cherry

Walnut

Q/S African Mahogany

Bubinga

Rustic Alder

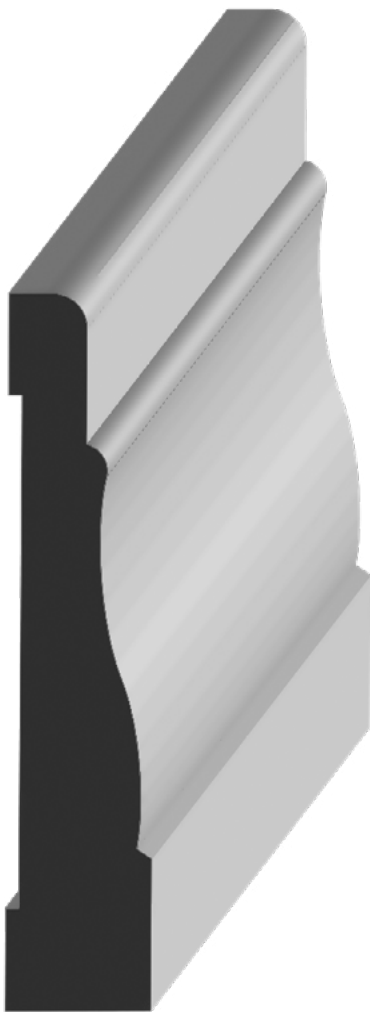
Quited Maple



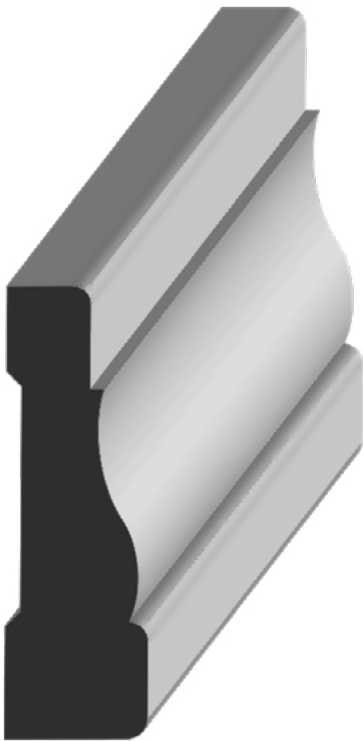
MORE THAN 4,000 CUSTOM MOULDINGS PROFILES ARE AVAILABLE. CONTACT OR VISIT US TO VIEW THEM!

CASING

✓ MANY ADDITIONAL SPECIES AND GRADES AVAILABLE UPON REQUEST

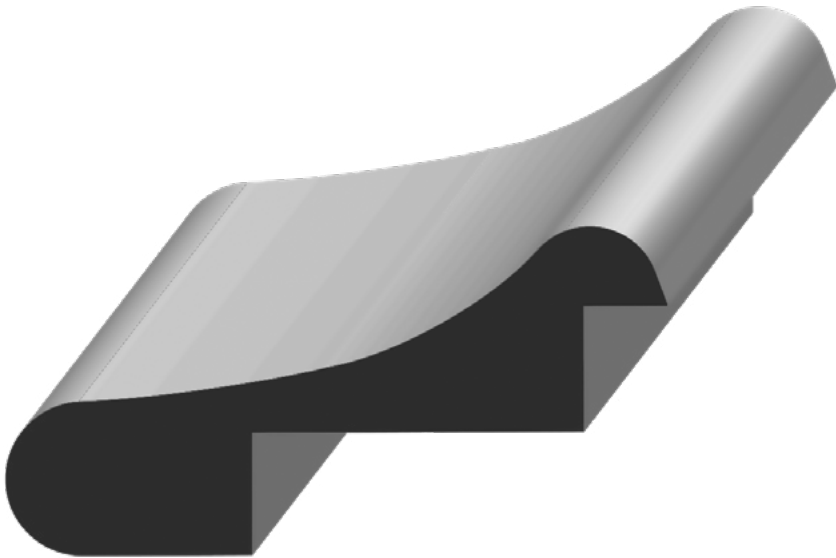


WM-444
11/16" x 3-1/2"
• Poplar • Red Oak

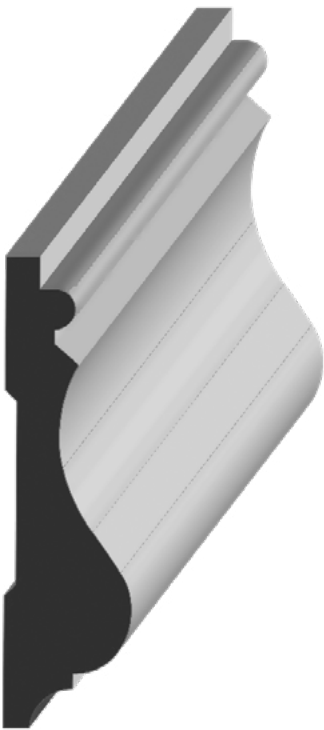


WM-356
11/16" x 2-1/4"
• Poplar • Red Oak

CHAIR RAIL
& BAR RAIL



P-2650
1-1/4" x 4-1/4"
• Poplar • Red Oak • Maple • Cherry

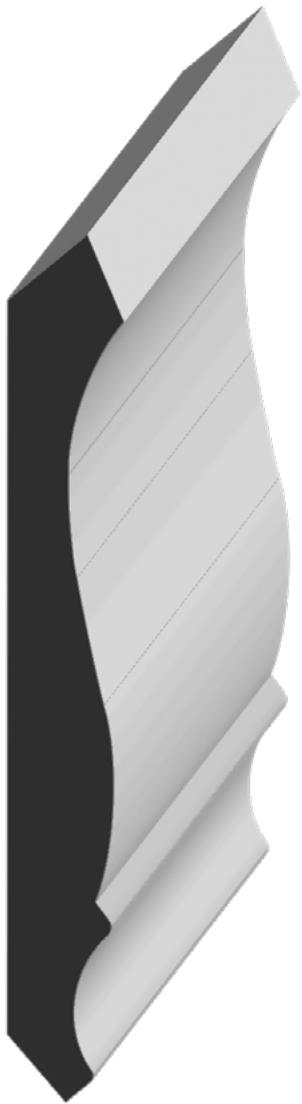


WM-390
11/16" x 2-5/8"
• Poplar

CROWN
& COVE

✓ MANY ADDITIONAL SPECIES AND GRADES AVAILABLE UPON REQUEST

CROWN
& COVE



WM-46
1 1/16" x 5-1/4"

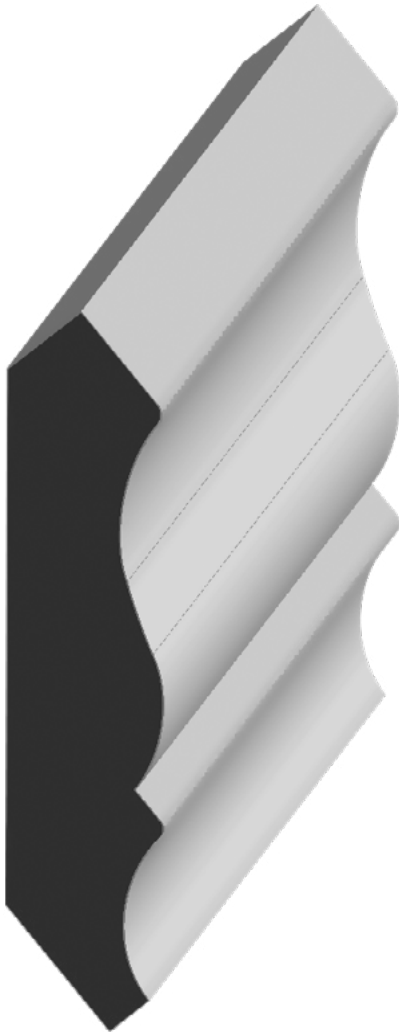
- Poplar

Not to scale



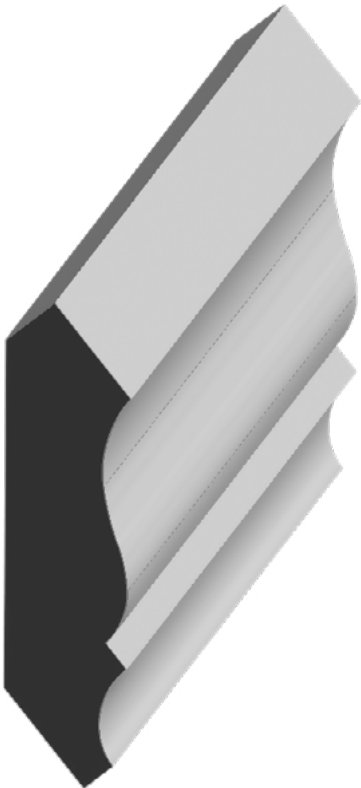
WM-48
1 1/16" x 4-1/4"

- Poplar
- Cherry



WM-51
1 1/16" x 3-1/4"

- Poplar
- Red Oak
- Maple
- Cherry
- Hickory

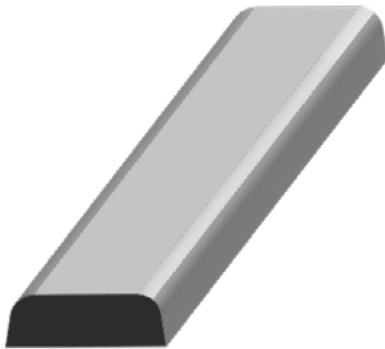


WM-54
9/16" x 2-1/4"

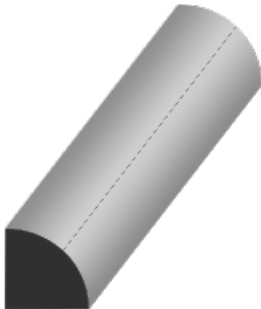
- Poplar
- Cherry

PANEL MOULD

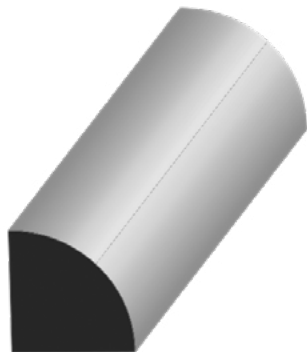
✓ MANY ADDITIONAL SPECIES AND GRADES AVAILABLE UPON REQUEST



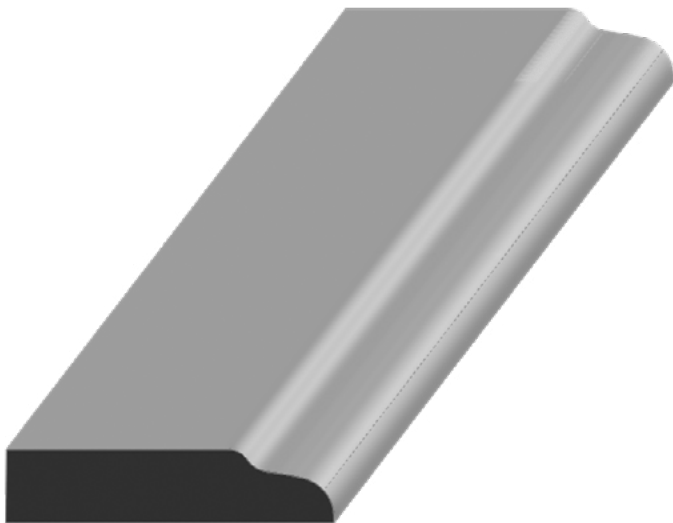
WM-142
1/4" x 3/4"
• Poplar



WM-108
1/2" x 1/2"
• Poplar

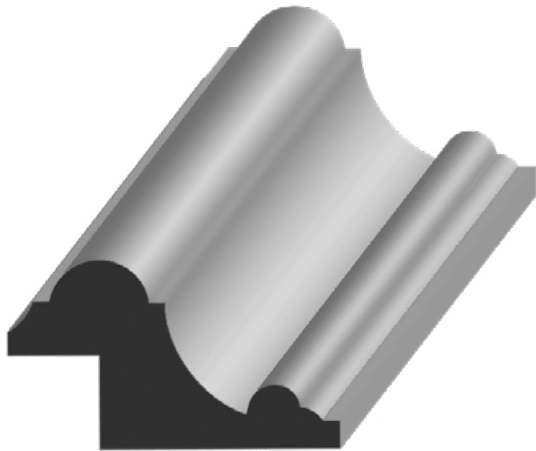


WM-105
3/4" x 3/4"
• Poplar

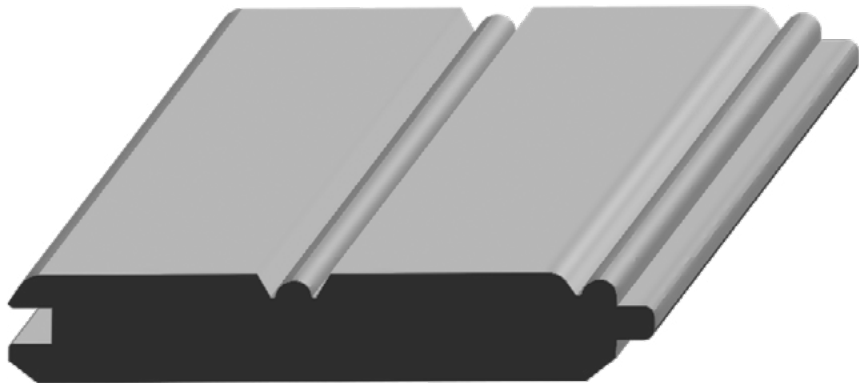


WM-915
WM-915
• Poplar

PANEL MOULD
AND T&G



26-2003
1" x 1-3/4"
• Poplar

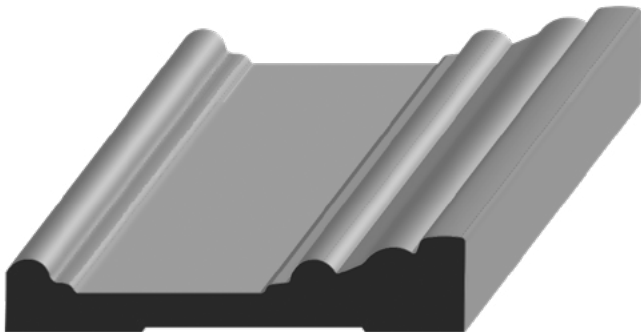


PAX14004
9/16" x 3-9/32"
• Poplar

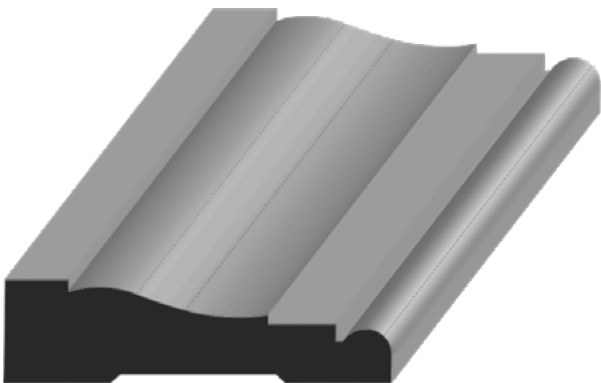
CUSTOM SAMPLING

✓ MANY ADDITIONAL SPECIES AND GRADES AVAILABLE UPON REQUEST

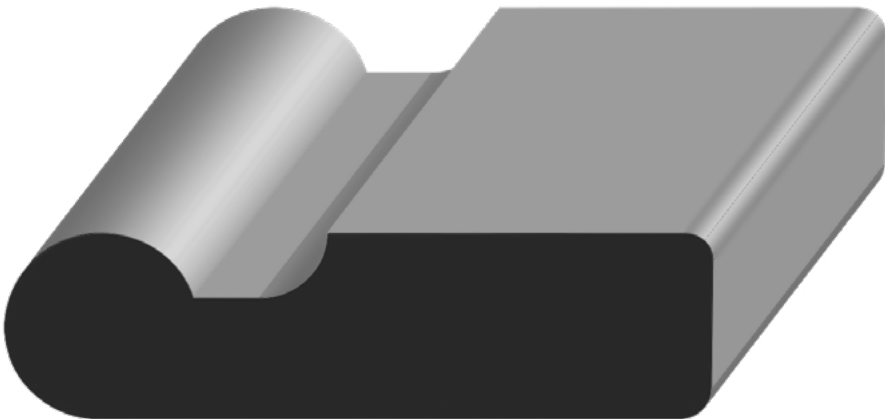
CUSTOM SAMPLING



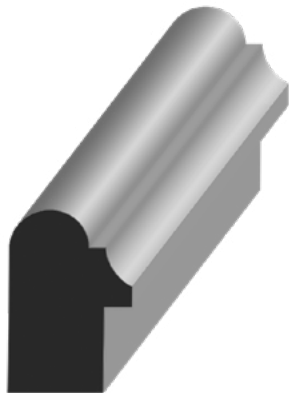
P-1503
3/4" x 3-1/2"



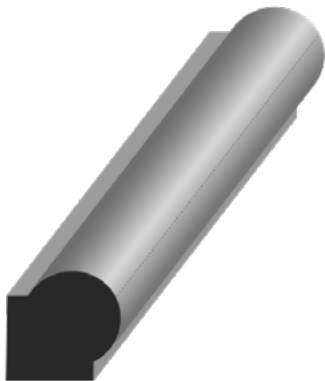
WM-371
11/16" x 2-1/2"



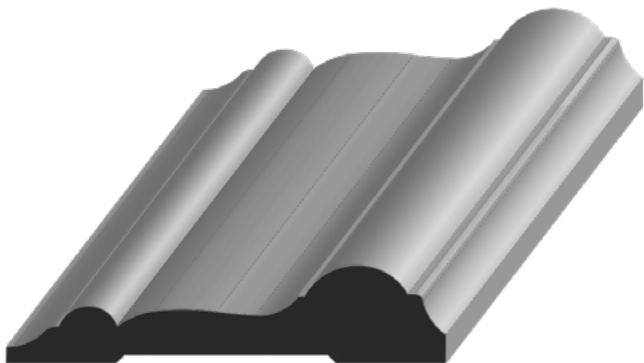
P-3535
1-1/2" x 5-1/2"
Not to scale



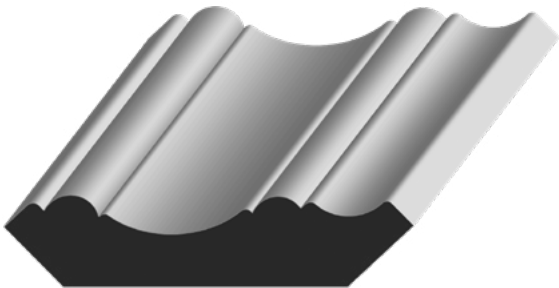
WM-288
1-1/16" x 1-5/8"



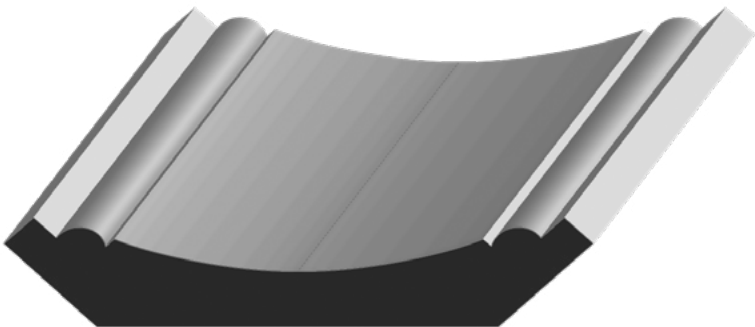
PAX71146
3/4" x 3/4"



WM-297
11/16" x 3"



PAX 10029
3/4" x 3-1/4"



P-1460
13/16" x 4-1/4"

THESE ARE JUST A FEW OF OUR STOCK KNIVES TO CHOOSE FROM.
CHECK WITH OUR STAFF FOR OTHER CUSTOM PROFILES.



**Readily Available
Across North America**



Cincinnati, OH
513-984-8200

Denver, CO
303-399-6810

Kansas City, MO
816-483-7000

San Antonio, TX
210-653-9663

GAIN THE PAXTON ADVANTAGE!

paxtonwood.com

888-826-5580

January 2024