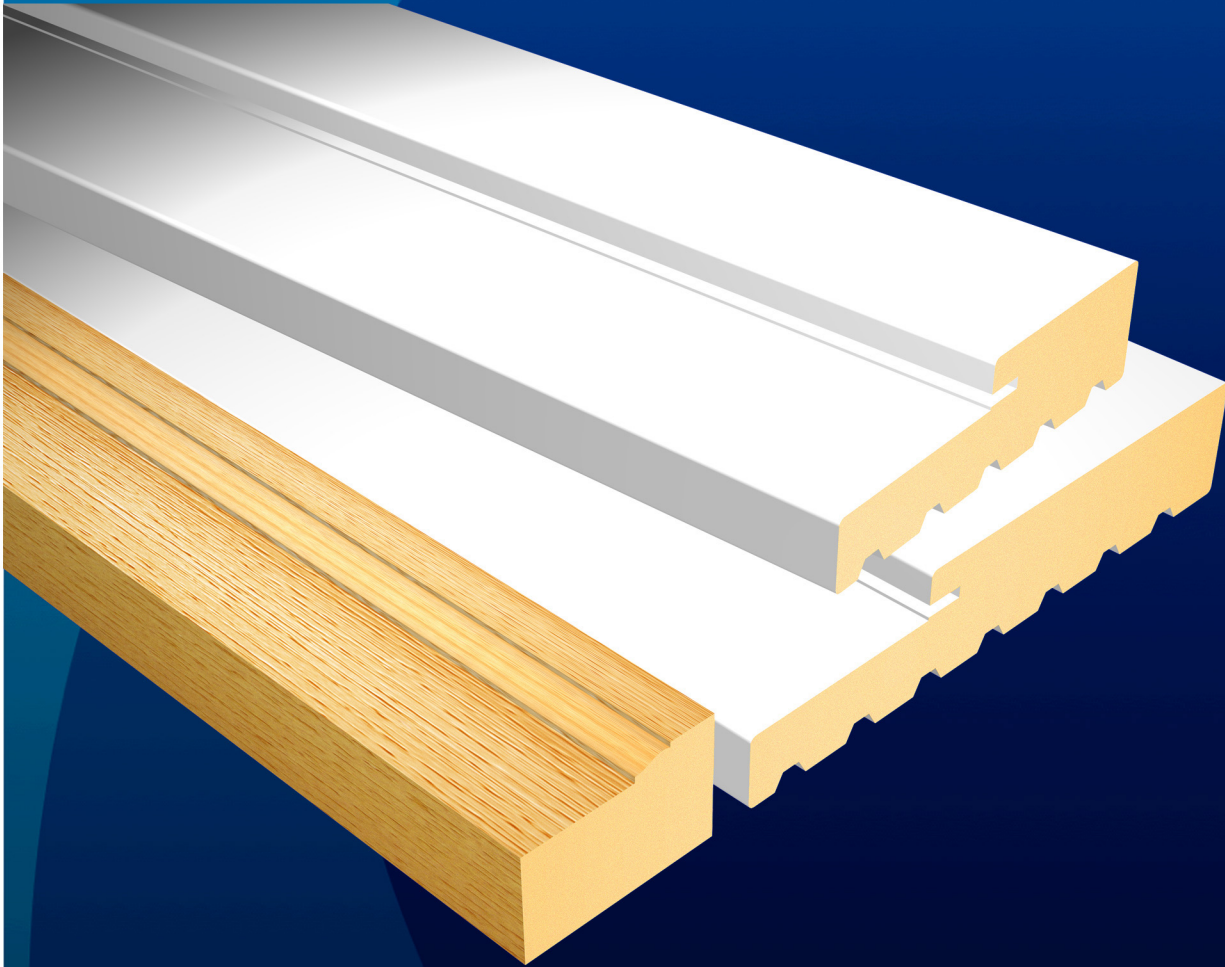




WORLDWIDE

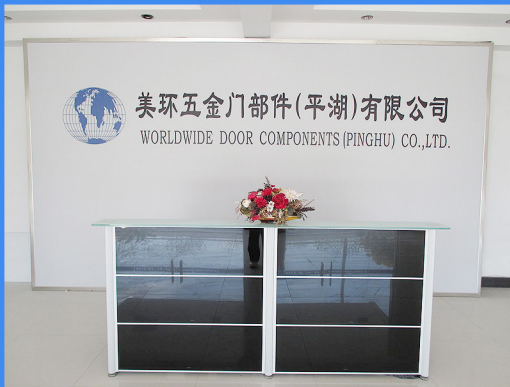
DOOR COMPONENTS, INC.



The 4Ever Frame

***Innovative, New Alternative to
Traditional Wood Door Jambs***

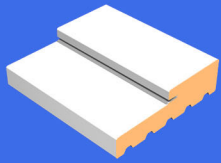




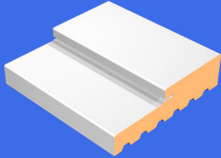
Since 1983, Worldwide Door Components has been manufacturing state-of-the-art door components. Serving domestic and international companies, we pride ourselves on providing exceptional customer service, on-time delivery, competitive pricing and new innovative product lines, like our "patent pending" Flip Lock Flush bolt. Our In-House Design Team and Testing Facility ensure that every component goes through a series of testing to meet specific market performance criteria. Just another example of our commitment to excellence! □

In 2004, the Chinese manufacturing base of Worldwide - USA Worldwide Door Components (Pinghu) Co., Ltd was founded in Pinghu Economic Development Zone, Zhejiang Province, the most developed region in China. We specialize in the production of thresholds, door sweeps, hinges, flushbolts, screws and much more. With the successful experience of our Headquarters and other US branches, we offer "first-class equipment and technology, scientific management mode, high quality and good credit" as the principle of Worldwide Pinghu. We sincerely hope that we can establish a long-term and good relationship with our customers all over the world .

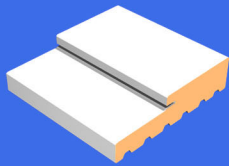




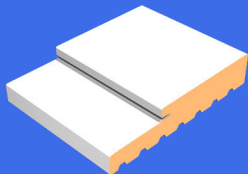
DRAWING	PART NO.	MATERIAL	LENGTH	PCS/PALLET
	J-P-4F	COMP WHITE CAP	83/99	360
	J-CP-4F	COMP PRIMED	83/99	
	J-CW-4F	COMP WOODGRAIN	83/99	



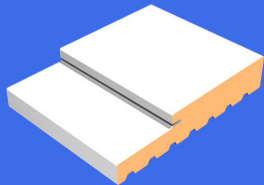
DRAWING	PART NO.	MATERIAL	LENGTH	PCS/PALLET
	J-P-478F	COMP WHITE CAP	83/99	280
	J-CP-478F	COMP PRIMED	83/99	
	J-CW-478F	COMP WOODGRAIN	83/99	



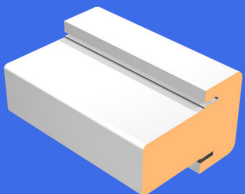
DRAWING	PART NO.	MATERIAL	LENGTH	PCS/PALLET
	J-P-5F	COMP WHITE CAP	83/99	240
	J-CP-5F	COMP PRIMED	83/99	
	J-CW-5F	COMP WOODGRAIN	83/99	



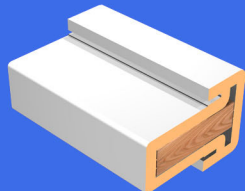
DRAWING	PART NO.	MATERIAL	LENGTH	PCS/PALLET
	J-P-6F	COMP WHITE CAP	83/99	180
	J-CP-6F	COMP PRIMED	83/99	
	J-CW-6F	COMP WOODGRAIN	83/99	



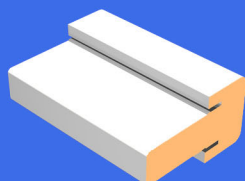
DRAWING	PART NO.	MATERIAL	LENGTH	PCS/PALLET
	J-P-7F	COMP WHITE CAP	83/99	180
	J-CP-7F	COMP PRIMED	83/99	
	J-CW-7F	COMP WOODGRAIN	83/99	



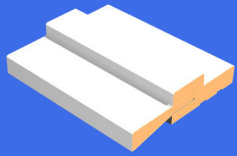
DRAWING	PART NO.	MATERIAL	LENGTH	PCS/PALLET
	J-CP-MP-212	COMP PRIMED	85/99	210
	J-CW-MP-212	COMP WOODGRAIN	85/99	



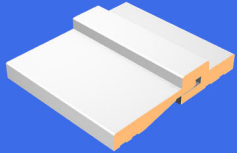
DRAWING	PART NO.	MATERIAL	LENGTH	PCS/PALLET
	J-CP-MP-212C	COMP PRIMED	85/99	210
	J-CW-MP-212C	COMP WOODGRAIN	85/99	



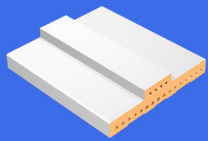
DRAWING	PART NO.	MATERIAL	LENGTH	PCS/PALLET
	J-CP-MP-2	COMP PRIMED	85/99	270
	J-CW-MP-2	COMP WOODGRAIN	85/99	



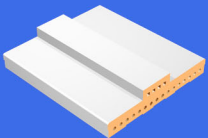
DRAWING	PART NO.	MATERIAL	LENGTH	PCS/PALLET
	J-CP-SP-458	COMP PRIMED	36/82	360



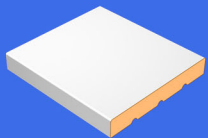
DRAWING	PART NO.	MATERIAL	LENGTH	PCS/PALLET
	J-CP-SP-576	COMP PRIMED	36/82	240



DRAWING	PART NO.	MATERIAL	LENGTH	PCS/PALLET
	J-CP-U1-458	COMP PRIMED	36/82	360



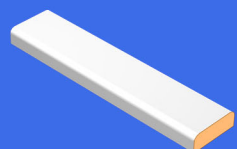
DRAWING	PART NO.	MATERIAL	LENGTH	PCS/PALLET
	J-CP-U1T-458	COMP PRIMED	83/99	360



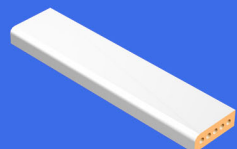
DRAWING	PART NO.	MATERIAL	LENGTH	PCS/PALLET
	J-CP-FL-458	COMP PRIMED	36/82	450



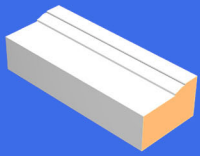
DRAWING	PART NO.	MATERIAL	LENGTH	PCS/PALLET
	CP-916	COMP PRIMED	83/99	2200



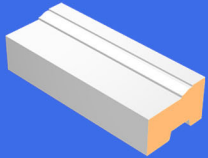
DRAWING	PART NO.	MATERIAL	LENGTH	PCS/PALLET
	CP-8540	COMP PRIMED	102/192	2100



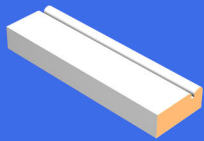
DRAWING	PART NO.	MATERIAL	LENGTH	PCS/PALLET
	CP-888	COMP PRIMED	36/85	2100



DRAWING	PART NO.	MATERIAL	LENGTH	PCS/PALLET
	J-P-180F	COMP WHITE CAP	85/102/204	630
	J-CP-180F	COMP PRIMED	85/102/204	
	J-CW-180F	COMP WOODGRAIN	85/102/204	



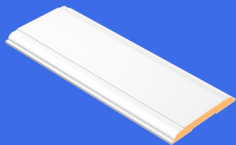
DRAWING	PART NO.	MATERIAL	LENGTH	PCS/PALLET
	J-P-180C	COMP WHITE CAP	85/102/204	630
	J-CP-180C	COMP PRIMED	85/102/204	
	J-CW-180C	COMP WOODGRAIN	85/102/204	



DRAWING	PART NO.	MATERIAL	LENGTH	PCS/PALLET
	J-CP-176	COMP PRIMED	85/102/204	1400
	J-CW-176	COMP WOODGRAIN	85/102/204	



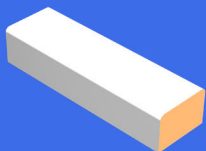
DRAWING	PART NO.	MATERIAL	LENGTH	PCS/PALLET
	J-CP-1X4	COMP PRIMED	85/102/204	539
	J-CW-1X4	COMP WOODGRAIN	85/102/204	



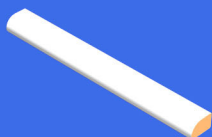
DRAWING	PART NO.	MATERIAL	LENGTH	PCS/PALLET
	CP-MCAS-2	COMP PRIMED	83/99	2800
	CW-MCAS-2	COMP WOODGRAIN	83/99	



DRAWING	PART NO.	MATERIAL	LENGTH	PCS/PALLET
	CP-MCAS-114	COMP PRIMED	83/99	2550
	CW-MCAS-114	COMP WOODGRAIN	83/99	



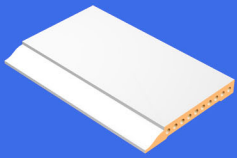
DRAWING	PART NO.	MATERIAL	LENGTH	PCS/PALLET
	J-CP-MPC	COMP PRIMED	85/99	980
	J-CW-MPC	COMP WOODGRAIN	85/99	



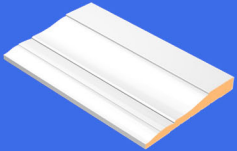
DRAWING	PART NO.	MATERIAL	LENGTH	PCS/BOX
	J-CP-SL	COMP PRIMED	83/99	175/100
	J-CW-SL	COMP WOODGRAIN		



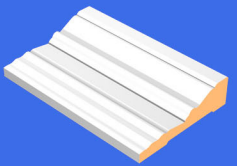
**4Ever
Frame**
www.4everframe.com



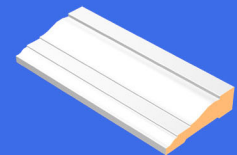
DRAWING	PART NO.	MATERIAL	LENGTH	PCS/PALLET
	CP-BAS-623	COMP PRIMED	83/99	1040



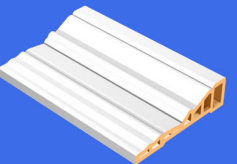
DRAWING	PART NO.	MATERIAL	LENGTH	PCS/PALLET
	CP-BAS-366	COMP PRIMED	102/192	1300/650



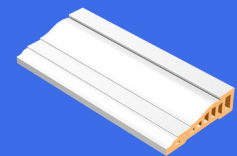
DRAWING	PART NO.	MATERIAL	LENGTH	PCS/PALLET
	CP-CAS-9E	COMP PRIMED	36/84	600



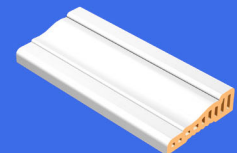
DRAWING	PART NO.	MATERIAL	LENGTH	PCS/PALLET
	CP-CAS-366	COMP PRIMED	36/84	1188



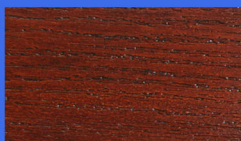
DRAWING	PART NO.	MATERIAL	LENGTH	PCS/PALLET
	CP-CAS-9EC	COMP PRIMED	36/84	600



DRAWING	PART NO.	MATERIAL	LENGTH	PCS/PALLET
	CP-CAS-366C	COMP PRIMED	36/84	1188



DRAWING	PART NO.	MATERIAL	LENGTH	PCS/PALLET
	CP-CAS-356	COMP PRIMED	36/85	1188



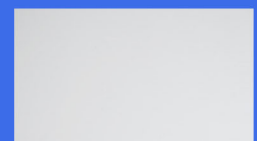
STAIN



OAK WOODGRAIN



SMOOTH



PRIMED

www.worldwidedoor.com

www.4everframe.com

Copyright in this material belongs to Worldwide Door Components, Inc.

CERTIFICATIONS

Architectural Testing

PERFORMANCE TEST REPORT

Rendered to:
WORLDWIDE DOOR COMPONENTS, INC.

PRODUCTS: PVC and Composite Door Jamb Material

Report No: B3162.01-106-31
Report Date: 10/24/11
Expiration Date: 09/27/15

130 Dry Court
York, PA 17406-8405
phone: 717-764-7200
fax: 717-764-4129
www.archtest.com

Intertek

REPORT NUMBER: 100719286COO-003
ORIGINAL ISSUE DATE: December 7, 2012

EVALUATION CENTER
Intertek Testing Services NA Ltd.
1500 Brigantine Drive
Coquitlam, B.C. V3K 7C1
Canada

RENDERED TO
Worldwide Door Components Inc.
5017 North Coolidge
Tampa, FL 33614
USA

PRODUCTS EVALUATED: 4-1/2" Wide Composite Frame - 4Ever Frame, J-CP-4F
EVALUATION PROPERTY: 20-Minute Fire Resistance

Report of testing a 4-1/2" wide composite frame for compliance with a 20-minute rating in accordance with: UL 10C (2009) - Positive Pressure Fire Tests of Door Assemblies, and CANULC S104-10 - Standard Method for Fire Tests of Door Assemblies.

WORLDWIDE Door Components, Inc.

LIMITED LIFETIME WARRANTY
WORLDWIDE DOOR 4EVER FRAMES

Terms and Conditions

Worldwide Door Components, 4Ever Frames, as sold directly by Worldwide Door Components, Inc. are guaranteed to be free of defects in material and workmanship that might reasonably affect its performance. The terms of this Limited Lifetime Warranty relate to the face plate of the frame for the life of the product.

This warranty is for the original owner of the product and is non-transferable.

The terms of this Limited Lifetime Warranty exclude failures, which are the result of or involve:

1. Accidents, negligence, abuse or improper use or installation in unusual, abnormal or extreme locations or situations.
2. Issues caused by local conditions of climate, movement of building or building components, or expansion/contraction of building or building components.
3. Damage caused by freight carriers, customer carriers, job site transportation, or any other means of transportation or handling, occurring after shipping from Worldwide Door Components, Inc.
4. Damage caused by fire, excessive forces, stains, contact with flammable materials, including solvents, contact with corrosive materials, contact with corrosive elements, use of Glue and/or any other material not authorized by Worldwide Door Components, Inc.
5. Damage done deliberately by employees, subcontractors, or others in violation of the terms of this Limited Lifetime Warranty, including, but not limited to, what is considered normal wear and tear.
6. Issues caused by fire, theft, or other circumstances not specified in the Warrant.
7. Issues caused by other factors.
8. Damage or insufficient handling, storage, installation, maintenance, or service.
9. All components, parts, and labor supplied by parties other than Worldwide Door Components, Inc. or its agents.

Worldwide Door Components, Inc. warrants the 4EVER Frame Product(s) free of defects in materials and workmanship and free of rot and decay during the warranty period for reasons covered by this warranty.

If the 4EVER FRAME PRODUCT THAT IS THE SUBJECT OF THIS LIMITED LIFETIME WARRANTY FAILS DURING THE WARRANTY PERIOD FOR REASONS COVERED BY THE LIMITED LIFETIME WARRANTY AND THE ORIGINAL PURCHASER SUBMITS THE WRITTEN SERVICE REQUEST REQUIRED UNDER THIS LIMITED LIFETIME WARRANTY, WORLDWIDE DOOR COMPONENTS, INC. WILL:

REPLACE THE 4EVER FRAME PRODUCT WITH A PRODUCT THAT IS FUNCTIONALLY AT LEAST EQUAL TO THE 4EVER FRAME PRODUCT BEING REPLACED, OR PROVIDE U.S. DOLLARS THE VALUE OF THE FRAME AS LISTED ON THE WORLDWIDE DOOR COMPONENTS PRICE LIST AT THE TIME OF FAILURE.

Warranty Claim Procedures -- To place a warranty claim, purchaser shall notify the Corporate Office of Worldwide Door Components, Inc. by providing the following information presented in writing:

1. Product ID and description of the Frame.
2. Proof of purchase (invoice and delivery ticket provided by Worldwide Door Components, Inc.) and:
3. Detailed description of defect(s).
4. A copy of this Limited Lifetime Warranty.

Claimed defective 4Ever Frame may be inspected by a Worldwide Door Components, Inc. representative, and customer must permit the inspection when requested by Worldwide Door Components, Inc., or any claims shall be deemed waived. All disputes regarding this Limited Lifetime Warranty will be exclusive venue and jurisdiction in Hillsborough County, in the state of Florida.

Page 1 of 2

Corporate Office
Worldwide Door Components, Inc.
5017 North Coolidge Ave. Tampa, FL 33614
Phone: (813) 870-0003 / Fax: (813) 877-4781

SGS

MSDS Report No. SHAML1206474301 Date: Jun. 20, 2012 Page 1 of 1

Worldwide Door Components Inc.
No.568 Xingping No.4 Road, Pinghu E.D.Z, Zhejiang, China 314200

SGS Ref. No. SC120402118-SH
Sample Name PVC Composite Door Jamb
End Uses Door jamb
Composition/ingredient of sample (as per client submission) See section 3 Composition/information on ingredients in the MSDS report
Job Receiving Date Apr. 27, 2012
Last Information Date Jun. 19, 2012
MSDS Preparation Date Apr. 27-Jun.19, 2012

Service Requested: Material Safety Data Sheet (MSDS) for the sample with submitted composition.

Summary: As per request, the contents and formats of the MSDS are prepared in accordance with US Regulations Relating to Labor 29 CFR 1910.1200 (g), and is provided per attached.

Signed for and on behalf of
SGS-CSTC Chemical Laboratory

Linyi Liu
Lab Manager

R W B C R W Building Consultants, Inc.
Consulting and Engineering Services for the Building Industry
P.O. Box 236 Valrico, FL 33595 Phone 813.683.9197
Florida Board of Professional Engineers Certificate of Authorization No. 9613

Product Evaluation Report Report No: FL-14969.1
Date: November 7, 2011

Product Category	Sub-Category	Manufacturer	Product Name
Exterior Doors	Exterior Doors Components	Worldwide Door Components, Inc. 5017 N. Coolidge Ave. Tampa, FL 33614 Phone 813.877.8863	"4EVER JAMB" Composite Door Jamb Insulating/Overlaid Trimmed

Scope: Product Evaluation report issued by R W Building Consultants, Inc. and Lyndon F. Schmidt, P.E. (System ID # 1998) for Worldwide Door Components, Inc. based on Rule Chapter No. 900.3, Method 1 of the State of Florida Product Approval, Dept. of Community Affairs - Florida Building Commission.

R W Building Consultants and Lyndon F. Schmidt, P.E. do not have nor will acquire financial interest in the company manufacturing or distributing the product or in any other entity involved in the approval process of the product named herein.

Limitations:

1. This product has been evaluated and is in compliance with the 2010 Florida Building Code (FBC) structural requirements excluding the "High Velocity Hurricane Zone".
2. Product anchors shall be as tested and spaced as shown on details. Anchor embedment to base material shall be beyond wall finishing or stucco.
3. When used in areas requiring wood borne debris protection, this product complies with Section 1609.1.2 of the FBC and does not require an impact resistant covering. The product meets impact level "2" and includes Wind Zone 4 as defined in ASTM E1596.
4. This "IMPACT" door jamb, as a component, is to be used as a substitute to a similar door jamb in an impact approved (complies with Section 1609.1.2 of the FBC) door system possessing a current Florida Statewide Product Approval.
5. The design pressure of the assembly shall be the lesser of the design pressure for the door jamb shown in this approval or the design pressure of the door assembly used in conjunction with this approval.
6. The maximum frame size of the door assembly shall be the lesser of the maximum frame size stated in this approval or the maximum frame size of the door assembly approved used in conjunction with this approval.
7. Site conditions that deviate from the details of drawing FL-14969.1 require further engineering analysis by a licensed engineer or registered architect.
8. See drawing FL-14969.1 for size and design pressure limitations.

Supporting Documents:

Test Report No.	Test Standard	Tested By	Signed By
TEL 01700413	ASTM E 250-02	Testing Evaluation Laboratory	Lyndon F. Schmidt, P.E.
TEL 01700388A	ASTM E 1965-01/969-09	Testing Evaluation Laboratory	Lyndon F. Schmidt, P.E.
TEL 01700388B	ASTM D 653-03	Testing Evaluation Laboratory	Lyndon F. Schmidt, P.E.
TEL 01700388C	ASTM D 2643-06(2004)	Testing Evaluation Laboratory	Lyndon F. Schmidt, P.E.
TEL 01700388C	ASTM D 1629-06(2005)	Testing Evaluation Laboratory	Lyndon F. Schmidt, P.E.

Prepared by: R W Building Consultants, Inc. (CA #9813)
Signed & Sealed by: Lyndon F. Schmidt, P.E.

Quality Assurance
Certificate of Participation issued by National Accreditation and Management Institute, certifying that Worldwide Door Components, Inc. in manufacturing products with a quality assurance program that complies with ISO9001:2000 and Guide 53

Lyndon F. Schmidt, P.E.
FL PE No. 33400
10/20/11

PF 1632 Sheet 1 of 1

4EVERframe®

Installation Care and Finishing Instructions
Read and understand these entire instructions before installation

The 4EVERframe door frame system is an innovative alternative to the traditional wood door frame systems. This poly-fiber door frame system is a step above the normal wooden door frame. Improved strength, vastly improved screw holding strength and enhanced properties that make it moisture, rot and insect resistant. All this and the 4EVERframe can be installed much the same way as a wood door frame.

The following Installation, Finishing, and Care Instructions are intended for:

any primed ready to paint 4EVERframe system.

1. Store in a dry clean location; never store outdoors with concrete, damp surfaces, or in extreme humidity.
2. The Rough Opening (RO) dimensions to be 1/2" wider (1/2" shim to side) and 1/2" taller than the outside dimensions of the doorframe (not including the brickmold trim) and sides flush to within 1/8" top to bottom.
3. The sill or sub-door should be level within 1/8" of the width of the opening, and not dipping to the interior. If the sill is not level, a good method is to lay and track a sticky-backed wafer-grade membrane to bring the sill to level. This also allows caulking steps #8 and #9.
4. Never install in direct contact with concrete; use a sill pan or a waterproof membrane between the sill and sub-door.
5. We recommend applying a sticky-backed waterproof membrane around the entire RO per manufacturer specifications.
6. Prepping for the sill, first add any support needed to support 100% of the sill extending past the wall framing. Always use an array of flashing system over the sub-door. We suggest starting with a waterproof sticky-backed membrane. Follow the manufacturer's specs, while tracking the membrane under the entire sill and high down over the face of the wall to base of, then extend 6" on the side and under any membrane used on the side walls of the RO. Adding a sill pan provides additional protection from moisture finding a way under to door unit.
7. Apply 3 large beads of caulk or mastic to the top of the sub-door and the underside of the door unit sill for positive and continuous seal under the door sill.
8. Then apply caulking on three faces of the RO, both sides and the top which provides seal behind the exterior trim.
9. Lean the bottom of the door in the opening and center it. Then lean the door up and into the opening, ensuring the caulking under the sill and behind the exterior trim make a good seal. Once you are ready to shim and square the door.
10. Never attach the frame system by the trim only; shim the door square in the RO then attach it through both the face of the frame and the trim.
11. A minimum of 3-screws/straps are applied to each side (6 for an "F" door) - one behind or onto each face and two between each hinge, and then attach the same shim location on the lock side jamb, and then bolted or just above the lock edge. Fasten through the shim to keep them in place, and use a 1/4" screw in each hinge a table plate to set minimum the RO framing saving maximum strength to the frame system.
12. Never shim above the top horizontal head frame, except directly above any small joint which adds strength and stability to the door unit.
13. Once the door is set and the entire in the frame connection of the trim to the wall to appear no moisture can penetrate behind the trim, repeat this after the siding is attached providing a tight wall/door frame fit.
14. Install Z flashing along the top of the frame's exterior bottom end trim. Flashing must cover the top of the trim, top over the face and ends of the trim 1/4", and extend 1/2" above the trim, which is then covered by the house wrap and/or waterproof membrane and fast by the house siding.
15. Fill all gaps between the frame and the RO wall cavity with closed cell foam that will not absorb water.

SGS

Test Report No. SHAMLP1400031701 Date: 07 Jan 2014 Page 1 of 3

USA Worldwide Door Components (Pinghu) Co. Ltd.
No.568 Xingping No.4 Road, Pinghu Economic Development Zone, Zhejiang 314200

The following sample(s) was/were submitted and identified on behalf of the clients as: Composite Door Jamb

SGS Job No.: SHN140100003PC(E) SHN140100004PC(C) - SH
Lot No.: 4Ever Frames

Manufacturer: USA Worldwide Door Components (Pinghu) Co. Ltd.

Date of Sample Received: 02 Jan 2014
Testing Period: 02 Jan 2014 - 07 Jan 2014

Test Requested: As specified by client, selected parts of the submitted sample(s) for compliance with Public Law 110-314 (Consumer Product Safety Improvement Act of 2008, CPSIA):
- CPSIA section 101(a)(2) - Lead in accessible substrate materials (including Children's Metal Jewelry)
- CPSIA section 108 - Phthalates

Test Method: Please refer to next page(s).
Test Results: Please refer to next page(s).

Result Summary:

Test Parameter	Conclusion
CPSIA section 101(a)(2) - Lead in accessible substrate materials (including Children's Metal Jewelry)	PASS
CPSIA section 108 - Phthalates	PASS

Signed for and on behalf of
SGS-CSTC Ltd.

JJ Fan
Approved Signatory

TEL Testing Evaluation Laboratories, Inc.
2002 Wood Court Suite 1 - Plant City, FL 33563
Phone: 813-754-9887

Test Report Issued To
Worldwide Door Corporation
5017 North Coolidge Avenue
Tampa, FL 33614

Test Report Number
TEL 01700390D

Date of Sample Notification Number
TEL 12-486

Date Certification Number
11-1213.01

Date Report Issued
April 28, 2014

Test Dates
July 27, 2012 through February 17, 2013

Model Designation
Composite Material for Door Jamb

Reference Specifications
ASTM G155-06
ASTM D3683-04

PF 408 TEL 01700390D Page 1 of 4

William B. Shollen
PE No. 26686
1505 Nassau Avenue
Tampa, FL 33605

SGS

Member of the SGS Group (SGS SA)



WORLDWIDE DOOR COMPONENTS, INC.

Address: 5017 N. Coolidge Tampa, FL 33614 Phone: 813-870-0003

The 4Ever Frame is an innovative, new alternative to traditional wood door jambs. After extensive research and development, Worldwide Door Components has formulated a poly-fiber Door Frame System that combines all the strength and stability of wood without the rotting, warping and splitting. The 4Ever Frame is resistant to mold, mildew, fungus, salt, chemicals, insects and pollutants. The 4Ever Frame System is the long-lasting alternative to a maintenance free entryway. This unique formulation means that the 4Ever Frame can be machined the same way traditional wood jambs are but with no added hassles!

The 4Ever Frame will maintain its integrity for years to come.

When compared to wood frames, the 4Ever Frame can be painted and nailed, easily machined, provide the same use and functionality and has the same shape design as a wood moulding product's solid material.

Features

- ☞ Closed cellular structure
- ☞ Rigid Poly-Fiber Formulation
- ☞ 2X Screw Holding Power
- ☞ Top-notch Impact & Skin
- ☞ Cut to size

Benefits

- ☞ Will not absorb moisture
- ☞ No aluminum support channel needed
- ☞ Stronger than wood door frames
- ☞ More durable
- ☞ More size options

www.worldwidedoor.com

www.4everframe.com

Proudly Supplied By

p m d PACIFIC MUTUAL
DOOR AND WINDOW

816-531-0161 | www.pacificmutualdoor.com