



**POCKET DOOR  
HARDWARE**



**WALL MOUNT DOOR  
HARDWARE**



**BYPASS DOOR  
HARDWARE**



**MULTI-PASS DOOR  
HARDWARE**



**BIFOLD DOOR  
HARDWARE**



**MULTI-FOLD DOOR  
HARDWARE**

# Designed to last a Lifetime. Guaranteed.



*Engineered Excellence*



Proudly Supplied By



815-965-9439 | [www.rivercitymillwork.com](http://www.rivercitymillwork.com)



# POCKET DOOR HARDWARE

## 2060 SERIES



### For 1 1/8" to 2 1/4" thick doors up to 400 lbs.

For use in 2x6 stud walls, this is a deluxe commercial grade pocket door frame. It utilizes all-steel, stiff studs to resist bending and warping. Heavy duty extruded aluminum I-beam track, four wheel ball bearing hangers with machine turned 1" wheels.

.125 6063T6 Aluminum track, 11-13 gauge steel parts

## 2000 SERIES



### For 1 1/8" to 1 3/4" thick doors up to 400 lbs.

For use in 2x4 stud walls, this is a deluxe commercial grade pocket door frame. Utilizes wood studs wrapped in steel. Heavy duty extruded aluminum I-beam track, four wheel ball bearing hangers with machine turned 1" wheels.

.125 6063T6 Aluminum track, 11-18 gauge steel parts

## 1560 SERIES



### For 1" to 3" thick doors up to 200 lbs.

For use in 2x6 stud walls, this is a commercial grade pocket door frame. Utilizes a "jump proof" aluminum box track and heavy gauge steel wrapped split studs. Trouble free tricycle hangers with machine turned 1" wheels on convex rails.

.055 6063T6 Aluminum track, 14-18 gauge steel parts

## 1500 SERIES



### For 1" to 1 3/4" thick doors up to 200 lbs.

For use in 2x4 stud walls, this is a commercial grade pocket door frame. Utilizes a "jump proof" aluminum box track and heavy gauge steel wrapped split studs. Trouble free tricycle hangers with machine turned 1" wheels on convex rails.

.055 6063T6 Aluminum track, 14-18 gauge steel parts

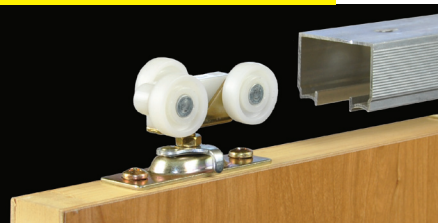
## 200PD SERIES



### For 1 1/8" or thicker doors up to 400 lbs.

A deluxe commercial grade hardware set. Heavy duty extruded aluminum I-Beam track, four wheel ball bearing hangers with machine turned 1" wheels. The 200PD hardware set is used in the 2060 and 2000 Series pocket door frames.

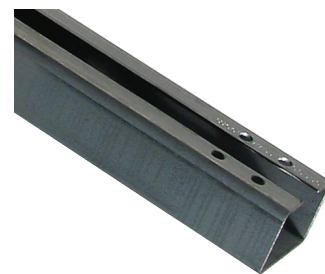
## 100PD SERIES



### For 1" or thicker doors up to 200 lbs.

Trouble free tricycle hangers with machine turned 1" wheels that ride on jump proof convex track rails. Ball bearing hangers available for doors up to 200 lbs. The 100PD hardware set is used in the 1560 and 1500 Series pocket door frames.

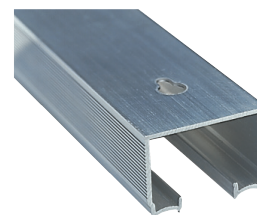
## POCKET DOOR HARDWARE



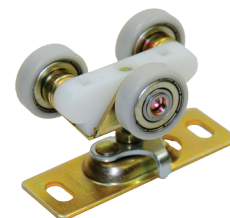
Heavy-Duty all steel studs, used in the 2060, have a comparable flex to a standard stud wall. No warping.



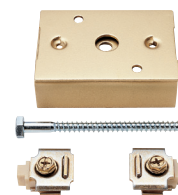
Steel encased wood nailer studs and jambs. Steel protects the pocket from protruding nails.



Removable, heavy-gauge extruded aluminum box track. Has key-hole slots for removal.

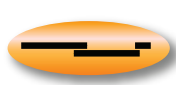


Tricycle hangers with 1" machine-turned wheels for box track. Ball-bearing available for 200 lbs doors.



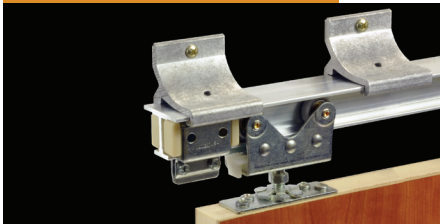
Pocket Door Converging Door Kit. Includes track stops so that the doors stop where needed.





# WALL-MOUNTED DOOR HARDWARE

## 200WM SERIES



### For 1½" thick or thicker doors up to 400 lbs.

A commercial grade wall mounted sliding door hardware system designed to carry heavy doors. The 200WM features heavy-duty extruded aluminum I-beam track, track mounting brackets, and four wheel adjustable hangers with machine turned ball bearing wheels.



Anodized, aluminum snap on fascia available in Dark Bronze or Satin finish.

## 2610F SERIES

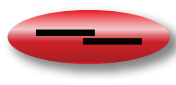


### For 1" to 1¾" thick doors up to 200 lbs.

The easy to install 2610F commercial grade wall mount sliding door hardware is designed to carry heavy doors up to 200 lbs. Precision extruded aluminum box track features a built in fascia that hides the sliding hardware from view. Strong 3 wheel hangers are adjustable and machine turned.



Anodized, aluminum finish available in Dark Bronze.



# SLIDING DOOR HARDWARE

## 200SD SERIES



### For 1½" thick or thicker doors up to 400 lbs.

A deluxe commercial grade wall mounted sliding door hardware system designed to carry heavy doors. The 200SD features heavy-duty extruded aluminum I-beam track, track mounting brackets, and four wheel adjustable hangers with machine turned ball bearing wheels.

## 100SD SERIES



### For 1" or thicker doors up to 200 lbs.

Trouble free tricycle hangers with machine turned 1" wheels that ride on jump proof convex track rails. Ball bearing hangers included in the set for doors up to 200 lbs. Hangers are easily adjustable with included wrench.

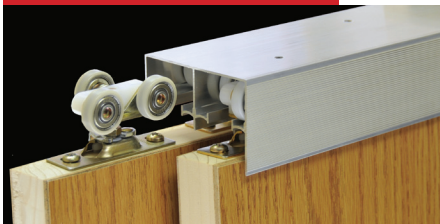


1 3/8" Plate

1 3/4" Plate

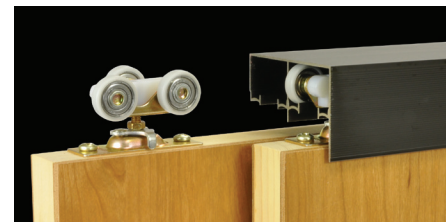
Side Mount Door Plates available for the 100SD, 138F, and 134F.

## 138F/134F SERIES



### For 1" or thicker doors up to 200 lbs.

Trouble free tricycle hangers with machine turned 1" wheels that ride on jump proof convex track rails. Ball bearing hangers available for doors up to 200 lbs. Precision extruded aluminum box track features a built in fascia that hides the sliding hardware from view.



Anodized, aluminum finish available in Dark Bronze for the 138F.

## 111SD SERIES



### For ¾" or thicker doors up to 150 lbs.

Trouble free tricycle hangers with machine turned ¾" wheels that ride on jump proof convex track rails. Ball bearing hangers included in the set for doors up to 150 lbs. Hangers are easily adjustable with included wrench.



1023 Saddle Bracket available for ¾" thick doors.

# FOLDING DOOR HARDWARE

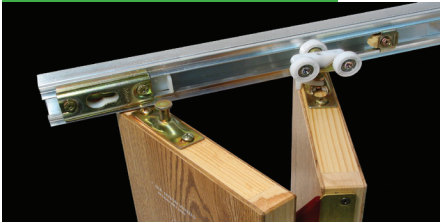
## 200FD SERIES



**For 1½" to 1¾" thick panels up to 125 lbs/each**  
A deluxe bifold hardware set for 12" to 48" panels up to 108" tall. Top hung, heavy duty I-beam track, four wheel (1" dia.) ball bearing hangers, heavy duty bottom pivot set.

.125 6063T6 Aluminum track, 11-13 gauge steel parts

## 100FD SERIES



**For 1" to 1¾" thick panels up to 75 lbs/each**  
An excellent bifold hardware set for 12"-24" panels up to 108" tall. Convex rail track, top hung, three wheel (1" dia.) ball bearing hangers, non-mortise lift off hinges.

.055 6063T6 Aluminum track, 14-16 gauge steel parts

## 111FD SERIES



**For ¾" to 1¾" thick panels up to 50 lbs/each**  
A superior light commercial bifold hardware set for 12"-24" panels up to 108" tall. Convex rail track, top hung, three wheel (¾" dia.) hangers, self locating, shock absorbing hinges.

.052 6063T6 Aluminum track, 14-16 gauge steel parts



1½" Plate



1¾" Plate



1¾" Plate

Side Mount Door Plates available for the 100FD.

# MULTIPLE DOOR HARDWARE

## 200MD SERIES



**For 1½" or thicker doors up to 400 lbs/each**  
A deluxe, commercial Multi-Slide hardware set. Bottom track and guides used to allow full left to right operation. Top hung, heavy duty I-beam track, four wheel (1" dia.) ball bearing hangers.

.125 6063T6 Aluminum track, 11-13 gauge steel parts

## 100MD SERIES



**For 1" or thicker doors up to 200 lbs/each**  
A heavy duty commercial Multi-Slide hardware set. Bottom track and guides used to allow full left to right operation. Convex rail track, top hung, three wheel (1" dia.) ball bearing hangers.

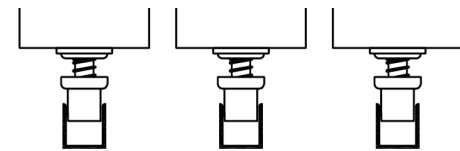
.055 6063T6 Aluminum track, 14-16 gauge steel parts

## 111MD SERIES



**For ¾" or thicker panels up to 150 lbs/each**  
A superior light commercial Multi-Slide hardware set. Bottom track and guides used to allow full left to right operation. Convex rail track, top hung, three wheel (¾" dia.) hangers.

.052 6063T6 Aluminum track, 14-16 gauge steel parts



Standard Guide Track Installation



Side mount guide posts can be used to allow for a setup that does not require bottom guide tracks. Individual guide posts are used and travel inside a groove in the bottom of each door to make for a clean floor in the opening.