



**WORLDWIDE**  
Door Components, Inc.



# HARDWARE & ACCESSORIES



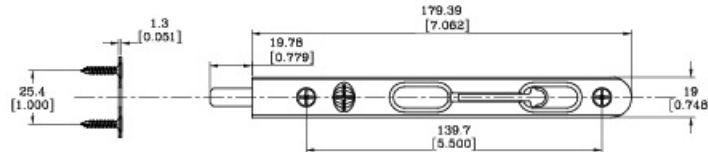


## 15-FL7 SERIES

Flip Lock Flushbolt for Wood T-Astragal



**15-FL7-15**  
**US15 Satin Nickel**



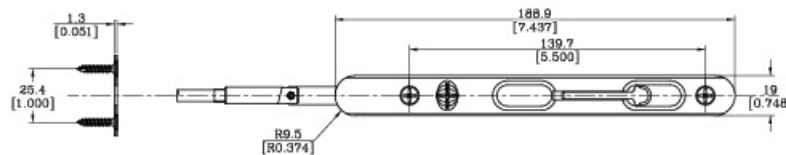
Item Number	Finished Code	Description	Material	PC/BOX	PC/Pallet	Weight/PC(kg)	Weight /Pallet(kg)
15-FL7-1D	US1D	Flat Black	Zinc Alloy	25	4200	0.18	796
15-FL7-3	US3	Polished Brass	Zinc Alloy	25	4200	0.18	796
15-FL7-5	US5	Antique Brass	Zinc Alloy	25	4200	0.18	796
15-FL7-10C	US10C	Oil Rubbed Bronze	Zinc Alloy	25	4200	0.18	796
15-FL7-15	US15	Satin Nickel	Zinc Alloy	25	4200	0.18	796
15-FL7-15A	US15A	Antique Nickel	Zinc Alloy	25	4200	0.18	796
15-FL7-26	US26	Polished Chrome	Zinc Alloy	25	4200	0.18	796
15-FL7-26D	US26D	Brushed Chrome	Zinc Alloy	25	4200	0.18	796

## 15-FLE7 SERIES

Flip Lock Extension Flushbolt for Wood T-Astragal



**15-FLE7-5**  
**US5 Antique Brass**



Item Number	Finished Code	Description	Material	PC/BOX	PC/Pallet	Weight/PC(kg)	Weight /Pallet(kg)
15-FLE7-1D	US1D	Flat Black	Zinc Alloy	25	2100	0.27	591
15-FLE7-3	US3	Polished Brass	Zinc Alloy	25	2100	0.27	591
15-FLE7-5	US5	Antique Brass	Zinc Alloy	25	2100	0.27	591
15-FLE7-10C	US10C	Oil Rubbed Bronze	Zinc Alloy	25	2100	0.27	591
15-FLE7-15	US15	Satin Nickel	Zinc Alloy	25	2100	0.27	591
15-FLE7-15A	US15A	Antique Nickel	Zinc Alloy	25	2100	0.27	591
15-FLE7-26	US26	Polished Chrome	Zinc Alloy	25	2100	0.27	591
15-FLE7-26D	US26D	Brushed Chrome	Zinc Alloy	25	2100	0.27	591

IMPORTANT! NOT ALL PRODUCTS STOCKED IN THE U.S. HD-01

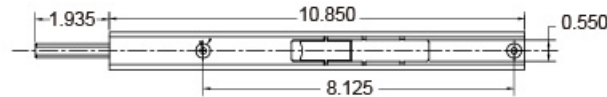


## 15-ASL10-PC

Slide Lock Flushbolt for Aluminum T-Astragal



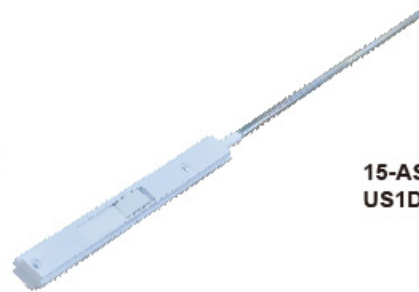
**15-ASL10-PC**  
USPC White Primed.



Item Number	Finished Code	Description	Material	PC/BOX	PC/Pallet	Weight/PC(kg)	Weight /Pallet(kg)
15-ASL10-PC	USPC	White Primed	Zinc Alloy	64	3072	0.34	1066
15-ASL10-1D	US1D	Flat Black	Zinc Alloy	64	3072	0.34	1066
15-ASL10-10B	US10C	Oil Rubbed Bronze	Zinc Alloy	64	3072	0.34	1066
15-ASL10-26D	US26D	Brushed Chrome	Zinc Alloy	64	3072	0.34	1066

## 15-ASEL10-PC

Slide Lock Flushbolt With Extension for Aluminum T-Astragal



**15-ASEL10-PC**  
US1D White Primed

				<b>For Aluminum T-Astragal</b>			
Item Number	Finished Code	Description	Material	PC/BOX	PC/Pallet	Weight/PC(kg)	Weight /Pallet(kg)
15-ASEL10-PC	US1D	White Primed	Zinc Alloy	30	2520	0.45	1154
15-ASEL10-1D	US1D	Flat Black	Zinc Alloy	30	2520	0.45	1154
15-ASEL10-10B	US10C	Oil Rubbed Bronze	Zinc Alloy	30	2520	0.45	1154
15-ASEL10-26D	US26D	Brushed Chrome	Zinc Alloy	30	2520	0.45	1154





## 05-9002 SERIES

Strike Plate for Flushbolts with Screws



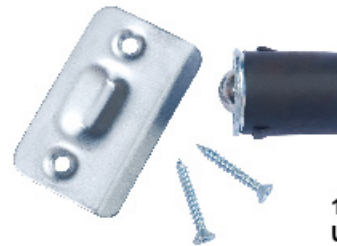
**05-9002-26D**  
**US26D Brushed Chrome**

**For Wood T-Astragal**

Item Number	Long Screw	Short Screw	Finished Code	Description	Material	PC/BOX	PC/Pallet	Weight/PC(kg)	Weight /Pallet(kg)
05-9002-PC	#6*3/4	#8*1-1/2"	USPC	White Primed	Steel	500	24000	0.011	304
05-9002-1D	#6*3/4	#8*1-1/2"	US1D	Flat Black	Steel	500	24000	0.011	304
05-9002-3	#6*3/4	#8*1-1/2"	US3	Polished Brass	Steel	500	24000	0.011	304
05-9002-5	#6*3/4	#8*1-1/2"	US5	Antique Brass	Steel	500	24000	0.011	304
05-9002-10C	#6*3/4	#8*1-1/2"	US10C	Oil Rubbed Bronze	Steel	500	24000	0.011	304
05-9002-15	#6*3/4	#8*1-1/2"	US15	Satin Nickel	Steel	500	24000	0.011	304
05-9002-15A	#6*3/4	#8*1-1/2"	US15A	Antique Nickel	Steel	500	24000	0.011	304
05-9002-26	#6*3/4	#8*1-1/2"	US26	Polished Chrome	Steel	500	24000	0.011	304
05-9002-26D	#6*3/4	#8*1-1/2"	US26D	Brushed Chrome	Steel	500	24000	0.011	304

## 10-1070 SERIES

Drive-In Ball Catch with Strike Plate and Screws



**10-1070-26D**  
**US26D Brushed Chrome**

Item Number	Finished Code	Description	Material	PC/BOX	PC/Pallet	Weight/PC(kg)	Weight /Pallet(kg)
10-1070-1D	US1D	Flat Black	Zinc Alloy	100	4800	0.06875	330
10-1070-3	US3	Polished Brass	Zinc Alloy	100	4800	0.06875	330
10-1070-5	US5	Antique Brass	Zinc Alloy	100	4800	0.06875	330
10-1070-10B	US10C	Oil Rubbed Bronze	Zinc Alloy	100	4800	0.06875	330
10-1070-15	US15	Satin Nickel	Zinc Alloy	100	4800	0.06875	330
10-1070-15A	US15A	Antique Nickel	Zinc Alloy	100	4800	0.06875	330
10-1070-26	US26	Polished Chrome	Zinc Alloy	100	4800	0.06875	330
10-1070-26D	US26D	Brushed Chrome	Zinc Alloy	100	4800	0.06875	330

IMPORTANT! NOT ALL PRODUCTS STOCKED IN THE U.S. HD-03



## 10-1090 SERIES

### Ball Catch Only



**10-1090-2D**  
US2D Yellow Zinc Chromed

Item Number	Finished Code	Description	Material	PC/BOX	PC/Pallet	Weight/PC(kg)	Weight /Pallet(kg)
10-1090-2D	US2D	Yellow Zinc Chrome	Zinc Alloy	200	9600	0.0515625	495

## 10-1080 SERIES

### Ball Catch Strike Plate with Screws



**10-1080-15**  
US15 Satin Nickel

Item Number	Finished Code	Description	Material	PC/BOX	PC/Pallet	Weight/PC(kg)	Weight /Pallet(kg)
10-1080-1D	US1D	Flat Black	Steel	200	9600	0.0275	264
10-1080-3	US3	Polished Brass	Steel	200	9600	0.0275	264
10-1080-5	US5	Antique Brass	Steel	200	9600	0.0275	264
10-1080-10B	US10C	Oil Rubbed Bronze	Steel	200	9600	0.0275	264
10-1080-15	US15	Satin Nickel	Steel	200	9600	0.0275	264
10-1080-15A	US15A	Antique Nickel	Steel	200	9600	0.0275	264
10-1080-26	US26	Polished Chrome	Steel	200	9600	0.0275	264
10-1080-26D	US26D	Brushed Chrome	Steel	200	9600	0.0275	264

IMPORTANT! NOT ALL PRODUCTS STOCKED IN THE U.S. HD-04



## 10-5000 SERIES

**3" Spring Door Stop with Fixed Screw and Plastic Tip**



**10-5000-5**  
**US5 Antique Brass**

Item Number	Finished Code	Description	Material	PC/BOX	PC/Pallet	Weight/PC(kg)	Weight /Pallet(kg)
10-5000-3/4	US3/4	Bright Brass	Zinc Alloy	500	120000	0.04	4415
10-5000-5	US5	Antique Brass	Zinc Alloy	500	120000	0.04	4415
10-5000-10B	US10B	Oil Rubbed Bronze	Zinc Alloy	500	120000	0.04	4415
10-5000-15	US15	Satin Nickel	Zinc Alloy	500	120000	0.04	4415
10-5000-15A	US15A	Antique Nickel	Zinc Alloy	500	120000	0.04	4415
10-5000-26D	US26D	Brushed Chrome	Zinc Alloy	500	120000	0.04	4415

## 10-5010 SERIES

**3-1/8" Heavy Duty Spring Door Stop with Metal Base and Plastic Tip**



**10-5010-26D**  
**US26D Brushed Chrome**

Item Number	Finished Code	Description	Material	PC/BOX	PC/Pallet	Weight/PC(kg)	Weight /Pallet(kg)
10-5010-3/4	US3/4	Bright Brass	Zinc Alloy	500	120000	0.06	2330
10-5010-5	US5	Antique Brass	Zinc Alloy	500	120000	0.06	2330
10-5010-10B	US10B	Oil Rubbed Bronze	Zinc Alloy	500	120000	0.06	2330
10-5010-15	US15	Satin Nickel	Zinc Alloy	500	120000	0.06	2330
10-5010-15A	US15A	Antique Nickel	Zinc Alloy	500	120000	0.06	2330
10-5010-26D	US26D	Brushed Chrome	Zinc Alloy	500	120000	0.06	2330

**IMPORTANT! NOT ALL PRODUCTS STOCKED IN THE U.S. HD-05**



## 10-5020 SERIES

**3-3/4" Heavy Duty Extra Long Spring Door Stop with Fixed Screw and Plastic Tip**



**10-5020-3/4**  
**US3/4 Bright Brass**

Item Number	Finished Code	Description	Material	PC/BOX	PC/Pallet	Weight/PC(kg)	Weight /Pallet(kg)
10-5020-3/4	US3/4	Bright Brass	Zinc Alloy	500	36000	0.07	2614
10-5020-5	US5	Antique Brass	Zinc Alloy	500	36000	0.07	2614
10-5020-10B	US10B	Oil Rubbed Bronze	Zinc Alloy	500	36000	0.07	2614
10-5020-15	US15	Satin Nickel	Zinc Alloy	500	36000	0.07	2614
10-5020-15A	US15A	Antique Nickel	Zinc Alloy	500	36000	0.07	2614
10-5020-26D	US26D	Brushed Chrome	Zinc Alloy	500	36000	0.07	2614

## 10-5100 SERIES

**Heavy Duty Handrail Bracket, Individually Polybagged Complete with 4 Screws**



**10-5100-15**  
**US Satin Nickel**

Item Number	Finished Code	Description	Material	PC/BOX	PC/Pallet	Weight/PC(kg)	Weight /Pallet(kg)
10-5100-3/4	US3/4	Bright Brass	Zinc Alloy	200	4800	0.29	1463
10-5100-10B	US10B	Oil Rubbed Bronze	Zinc Alloy	200	4800	0.29	1463
10-5100-15	US15	Satin Nickel	Zinc Alloy	200	4800	0.29	1463

IMPORTANT! NOT ALL PRODUCTS STOCKED IN THE U.S. HD-06





## 10-5110 SERIES

**Standard Handrail Bracket, Individually Polybagged Complete with 4 Screws**



**10-5110-15**  
**US15 Satin Nickel**

Item Number	Finished Code	Description	Material	PC/BOX	PC/Pallet	Weight/PC(kg)	Weight /Pallet(kg)
10-5110-3/4	US3/4	Bright Brass	Zinc Alloy	250	5000	0.07	829
10-5110-10B	US10B	Oil Rubbed Bronze	Zinc Alloy	250	5000	0.07	829
10-5110-15	US15	Satin Nickel	Zinc Alloy	250	5000	0.07	829

## 10-5120 SERIES

**Hinge Pin Stop, Complete with Rubber Stops and Plastic Spacer**



**10-5120-15**  
**US15 Satin Nickel**

Item Number	Finished Code	Description	Material	PC/BOX	PC/Pallet	Weight/PC(kg)	Weight /Pallet(kg)
10-5120-3/4	US3/4	Bright Brass	Zinc Alloy	500	10000	0.09	565
10-5120-10B	US10B	Oil Rubbed Bronze	Zinc Alloy	500	10000	0.09	565
10-5120-15	US15	Satin Nickel	Zinc Alloy	500	10000	0.09	565

**IMPORTANT! NOT ALL PRODUCTS STOCKED IN THE U.S. HD-07**





## 10-5030 SERIES

2-9/10" Long Screw Door Stop with Square Plastic



**10-5030-15**  
**US15 Satin Nickel**

Item Number	Finished Code	Description	Material	PC/BOX	PC/Pallet	Weight/PC(kg)	Weight /Pallet(kg)
10-5030-3/4	US3/4	Bright Brass	Zinc Alloy	500	12000	0.04	4415
10-5030-5	US5	Antique Brass	Zinc Alloy	500	12000	0.04	4415
10-5030-10B	US10B	Oil Rubbed Bronze	Zinc Alloy	500	12000	0.04	4415
10-5030-15	US15	Satin Nickel	Zinc Alloy	500	12000	0.04	4415
10-5030-15A	US15A	Antique Nickel	Zinc Alloy	500	12000	0.04	4415
10-5030-26D	US26D	Brushed Chrome	Zinc Alloy	500	12000	0.04	4415



**10-5040-10B**  
**US10B Oil Rubbed Bronze**

## 10-5040 SERIES

2-9/10" Heavy Duty Square Bar Upright Door Stop with Screw

Item Number	Finished Code	Description	Material	PC/BOX	PC/Pallet	Weight/PC(kg)	Weight /Pallet(kg)
10-5040-3/4	US3/4	Bright Brass	Zinc Alloy	500	36000	0.06	2330
10-5040-5	US5	Antique Brass	Zinc Alloy	500	36000	0.06	2330
10-5040-10B	US10B	Oil Rubbed Bronze	Zinc Alloy	500	36000	0.06	2330
10-5040-15	US15	Satin Nickel	Zinc Alloy	500	36000	0.06	2330
10-5040-15A	US15A	Antique Nickel	Zinc Alloy	500	36000	0.06	2330
10-5040-26D	US26D	Brushed Chrome	Zinc Alloy	500	36000	0.06	2330

IMPORTANT! NOT ALL PRODUCTS STOCKED IN THE U.S. HD-08



## 10-5130 SERIES

**Hinge Pin Middle-Sized Door Stop Complete with Rubber**



**10-5140-3/4**  
**US3/4 Bright Brass**

Item Number	Finished Code	Description	Material	PC/BOX	PC/Pallet	Weight/PC(kg)	Weight /Pallet(kg)
10-5130-3/4	US3/4	Bright Brass	Zinc Alloy	500	12000	0.06	4415
10-5130-5	US5	Antique Brass	Zinc Alloy	500	12000	0.06	4415
10-5130-10B	US10B	Oil Rubbed Bronze	Zinc Alloy	500	12000	0.06	4415
10-5130-15	US15	Satin Nickel	Zinc Alloy	500	12000	0.06	4415
10-5130-15A	US15A	Antique Nickel	Zinc Alloy	500	12000	0.06	4415
10-5130-26D	US26D	Brushed Chrome	Zinc Alloy	500	12000	0.06	4415

## 10-5140 SERIES

**Light Hinge Pin K Door Stop Complete with Rubber Stops**



**10-5140-3/4**  
**US3/4 Bright Brass**

Item Number	Finished Code	Description	Material	PC/BOX	PC/Pallet	Weight/PC(kg)	Weight /Pallet(kg)
10-5140-3/4	US3/4	Bright Brass	Zinc Alloy	500	36000	0.06	2330
10-5140-5	US5	Antique Brass	Zinc Alloy	500	36000	0.06	2330
10-5140-10B	US10B	Oil Rubbed Bronze	Zinc Alloy	500	36000	0.06	2330
10-5140-15	US15	Satin Nickel	Zinc Alloy	500	36000	0.06	2330
10-5140-15A	US15A	Antique Nickel	Zinc Alloy	500	36000	0.06	2330
10-5140-26D	US26D	Brushed Chrome	Zinc Alloy	500	36000	0.06	2330

IMPORTANT! NOT ALL PRODUCTS STOCKED IN THE U.S. HD-09



## 10-5150 SERIES

### Light Triangle Base Door Stop



**10-5150-3/4**  
**US3/4 Bright Brass**

Item Number	Finished Code	Description	Material	PC/BOX	PC/Pallet	Weight/PC(kg)	Weight /Pallet(kg)
10-5150-3/4	US3/4	Bright Brass	Zinc Alloy	500	12000	0.04	4415
10-5150-5	US5	Antique Brass	Zinc Alloy	500	12000	0.04	4415
10-5150-10B	US10B	Oil Rubbed Bronze	Zinc Alloy	500	12000	0.04	4415
10-5150-15	US15	Satin Nickel	Zinc Alloy	500	12000	0.04	4415
10-5150-15A	US15A	Antique Nickel	Zinc Alloy	500	12000	0.04	4415
10-5150-26D	US26D	Brushed Chrome	Zinc Alloy	500	12000	0.04	4415

## 10-5160 SERIES

### Heavy Triangle Base Door Stop



**10-5160-10B**  
**US10B Oil Rubbed Bronze**

Item Number	Finished Code	Description	Material	PC/BOX	PC/Pallet	Weight/PC(kg)	Weight /Pallet(kg)
10-5160-3/4	US3/4	Bright Brass	Zinc Alloy	500	36000	0.06	2330
10-5160-5	US5	Antique Brass	Zinc Alloy	500	36000	0.06	2330
10-5160-10B	US10B	Oil Rubbed Bronze	Zinc Alloy	500	36000	0.06	2330
10-5160-15	US15	Satin Nickel	Zinc Alloy	500	36000	0.06	2330
10-5160-15A	US15A	Antique Nickel	Zinc Alloy	500	36000	0.06	2330
10-5160-26D	US26D	Brushed Chrome	Zinc Alloy	500	36000	0.06	2330

**IMPORTANT! NOT ALL PRODUCTS STOCKED IN THE U.S. HD-10**





**10-5200-26D**  
**US26D Brushed Chrome**



## 10-5200 SERIES

**Concave Door Stop Complete With Zinc Alloy and Rubber**

Item Number	Finished Code	Description	Material	PC/BOX	PC/Pallet	Weight/PC(kg)	Weight /Pallet(kg)
10-5200-3/4	US3/4	Bright Brass	Zinc Alloy	500	12000	0.04	4415
10-5200-5	US5	Antique Brass	Zinc Alloy	500	12000	0.04	4415
10-5200-10B	US10B	Oil Rubbed Bronze	Zinc Alloy	500	12000	0.04	4415
10-5200-15	US15	Satin Nickel	Zinc Alloy	500	12000	0.04	4415
10-5200-15A	US15A	Antique Nickel	Zinc Alloy	500	12000	0.04	4415
10-5200-26D	US26D	Brushed Chrome	Zinc Alloy	500	12000	0.04	4415

## 10-5300 SERIES

**Convex Door Stop Complete With Zinc Alloy and Rubber**

**10-5300-3/4**  
**US3/4 Bright Brass**



Item Number	Finished Code	Description	Material	PC/BOX	PC/Pallet	Weight/PC(kg)	Weight /Pallet(kg)
10-5300-3/4	US3/4	Bright Brass	Zinc Alloy	500	36000	0.06	2330
10-5300-5	US5	Antique Brass	Zinc Alloy	500	36000	0.06	2330
10-5300-10B	US10B	Oil Rubbed Bronze	Zinc Alloy	500	36000	0.06	2330
10-5300-15	US15	Satin Nickel	Zinc Alloy	500	36000	0.06	2330
10-5300-15A	US15A	Antique Nickel	Zinc Alloy	500	36000	0.06	2330
10-5300-26D	US26D	Brushed Chrome	Zinc Alloy	500	36000	0.06	2330

IMPORTANT! NOT ALL PRODUCTS STOCKED IN THE U.S. HD-11



**10-5400-26**  
**US26 Bright Chrome**



## 10-5400 SERIES

**Short Cap Type Door Stop Complete With Zinc Alloy and Rubber**

Item Number	Finished Code	Description	Material	PC/BOX	PC/Pallet	Weight/PC(kg)	Weight /Pallet(kg)
10-5400-3/4	US3/4	Bright Brass	Zinc Alloy	200	10000	0.18	1840
10-5400-5	US5	Antique Brass	Zinc Alloy	200	10000	0.18	1840
10-5400-10B	US10B	Oil Rubbed Bronze	Zinc Alloy	200	10000	0.18	1840
10-5400-15	US15	Satin Nickel	Zinc Alloy	200	10000	0.18	1840
10-5400-15A	US15A	Antique Nickel	Zinc Alloy	200	10000	0.18	1840
10-5400-26D	US26D	Brushed Chrome	Zinc Alloy	200	10000	0.18	1840



**10-5400-26**  
**US26 Bright Chrome**

## 10-5410 SERIES

**Short Cap Type Door Stop Complete With Zinc Alloy and Rubber**

Item Number	Finished Code	Description	Material	PC/BOX	PC/Pallet	Weight/PC(kg)	Weight /Pallet(kg)
10-5410-3/4	US3/4	Bright Brass	Zinc Alloy	200	10000	0.23	2340
10-5410-5	US5	Antique Brass	Zinc Alloy	200	10000	0.23	2340
10-5410-10B	US10B	Oil Rubbed Bronze	Zinc Alloy	200	10000	0.23	2340
10-5410-15	US15	Satin Nickel	Zinc Alloy	200	10000	0.23	2340
10-5410-15A	US15A	Antique Nickel	Zinc Alloy	200	10000	0.23	2340
10-5410-26D	US26D	Brushed Chrome	Zinc Alloy	200	10000	0.23	2340

**IMPORTANT! NOT ALL PRODUCTS STOCKED IN THE U.S. HD-12**



## 10-5500 SERIES

### Stair Handrail Complete with Zinc Alloy



**10-5500-15**  
**US15 Satin Nickel**

Item Number	Finished Code	Description	Material	PC/BOX	PC/Pallet	Weight/PC(kg)	Weight /Pallet(kg)
10-5500-3/4	US3/4	Bright Brass	Zinc Alloy	100	5000	0.38	1940
10-5500-5	US5	Antique Brass	Zinc Alloy	100	5000	0.38	1940
10-5500-10B	US10B	Oil Rubbed Bronze	Zinc Alloy	100	5000	0.38	1940
10-5500-15	US15	Satin Nickel	Zinc Alloy	100	5000	0.38	1940
10-5500-15A	US15A	Antique Nickel	Zinc Alloy	100	5000	0.38	1940
10-5500-26D	US26D	Brushed Chrome	Zinc Alloy	100	5000	0.38	1940

## 10-5600 SERIES

### 5.5" Aluminum Die-casted Hook



**10-5600-15**  
**US15 Satin Nickel**

Item Number	Finished Code	Description	Material	PC/BOX	PC/Pallet	Weight/PC(kg)	Weight /Pallet(kg)
10-5600-3/4	US3/4	Bright Brass	Zinc Alloy	150	7500	0.29	2215
10-5600-5	US5	Antique Brass	Zinc Alloy	150	7500	0.29	2215
10-5600-10B	US10B	Oil Rubbed Bronze	Zinc Alloy	150	7500	0.29	2215
10-5600-15	US15	Satin Nickel	Zinc Alloy	150	7500	0.29	2215
10-5600-15A	US15A	Antique Nickel	Zinc Alloy	150	7500	0.29	2215
10-5600-26D	US26D	Brushed Chrome	Zinc Alloy	150	7500	0.29	2215

**IMPORTANT! NOT ALL PRODUCTS STOCKED IN THE U.S. HD-13**





## 10-5700 SERIES

With Palin door Bolt Complete with Zinc Alloy



**10-5700-26**  
**US15 Satin Nickel**

Item Number	Finished Code	Description	Material	PC/BOX	PC/Pallet	Weight/PC(kg)	Weight /Pallet(kg)
10-5700-3/4	US3/4	Bright Brass	Zinc Alloy	120	6000	0.38	2320
10-5700-5	US5	Antique Brass	Zinc Alloy	120	6000	0.38	2320
10-5700-10B	US10B	Oil Rubbed Bronze	Zinc Alloy	120	6000	0.38	2320
10-5700-15	US15	Satin Nickel	Zinc Alloy	120	6000	0.38	2320
10-5700-15A	US15A	Antique Nickel	Zinc Alloy	120	6000	0.38	2320
10-5700-26D	US26D	Brushed Chrome	Zinc Alloy	120	6000	0.38	2320

## 10-5800 SERIES

Without Palin door Bolt Complete with Zinc Alloy



**10-5800-3/4**  
**US3/4 Bright Brass**

Item Number	Finished Code	Description	Material	PC/BOX	PC/Pallet	Weight/PC(kg)	Weight /Pallet(kg)
10-5800-3/4	US3/4	Bright Brass	Zinc Alloy	120	6000	0.38	2320
10-5800-5	US5	Antique Brass	Zinc Alloy	120	6000	0.38	2320
10-5800-10B	US10B	Oil Rubbed Bronze	Zinc Alloy	120	6000	0.38	2320
10-5800-15	US15	Satin Nickel	Zinc Alloy	120	6000	0.38	2320
10-5800-15A	US15A	Antique Nickel	Zinc Alloy	120	6000	0.38	2320
10-5800-26D	US26D	Brushed Chrome	Zinc Alloy	120	6000	0.38	2320

IMPORTANT! NOT ALL PRODUCTS STOCKED IN THE U.S. HD-14



## 10-5900 SERIES

Strong magnetic door stopper



**10-5900-2G**  
**US2G Galvanize**

Item Number	Finished Code	Description	Material	PC/BOX	PC/Pallet	Weight/PC(kg)	Weight /Pallet(kg)
10-5900-3/4	US3/4	Bright Brass	Zinc Alloy	100	5000	0.6	3040
10-5900-5	US5	Antique Brass	Zinc Alloy	100	5000	0.6	3040
10-5900-10B	US10B	Oil Rubbed Bronze	Zinc Alloy	100	5000	0.6	3040
10-5900-15	US15	Satin Nickel	Zinc Alloy	100	5000	0.6	3040
10-5900-15A	US15A	Antique Nickel	Zinc Alloy	100	5000	0.6	3040
10-5900-26D	US26D	Brushed Chrome	Zinc Alloy	100	5000	0.6	3040

## 10-6000 SERIES

67 Magnetic door stoppers



**10-600-10B**  
**US10B oil rubbed bronze**

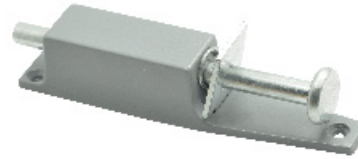
Item Number	Finished Code	Description	Material	PC/BOX	PC/Pallet	Weight/PC(kg)	Weight /Pallet(kg)
10-6000-3/4	US3/4	Bright Brass	Zinc Alloy	100	5000	0.45	2290
10-6000-5	US5	Antique Brass	Zinc Alloy	100	5000	0.45	2290
10-6000-10B	US10B	Oil Rubbed Bronze	Zinc Alloy	100	5000	0.45	2290
10-6000-15	US15	Satin Nickel	Zinc Alloy	100	5000	0.45	2290
10-6000-15A	US15A	Antique Nickel	Zinc Alloy	100	5000	0.45	2290
10-6000-26D	US26D	Brushed Chrome	Zinc Alloy	100	5000	0.45	2290

IMPORTANT! NOT ALL PRODUCTS STOCKED IN THE U.S. HD-15



## 10-7000 SERIES

Light Gateway Top with Spring

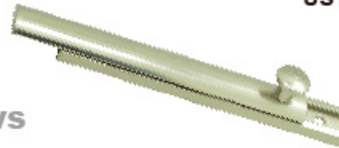


**10-5900-G**  
Gray

Item Number	Finished Code	Description	Material	PC/BOX	PC/Pallet	Weight/PC(kg)	Weight /Pallet(kg)
10-7000-3/4	US3/4	Bright Brass	Zinc Alloy	100	5000	0.65	3290
10-7000-5	US5	Antique Brass	Zinc Alloy	100	5000	0.65	3290
10-7000-10B	US10B	Oil Rubbed Bronze	Zinc Alloy	100	5000	0.65	3290
10-7000-15	US15	Satin Nickel	Zinc Alloy	100	5000	0.65	3290
10-7000-15A	US15A	Antique Nickel	Zinc Alloy	100	5000	0.65	3290
10-7000-26D	US26D	Brushed Chrome	Zinc Alloy	100	5000	0.65	3290

## 10-8000 SERIES

392 Aluminum Bolt With Plate and 6 Screws



**10-8000-15**  
US15 Satin Nickel

Item Number	Finished Code	Description	Material	PC/BOX	PC/Pallet	Weight/PC(kg)	Weight /Pallet(kg)
10-8000-3/4	US3/4	Bright Brass	Zinc Alloy	200	10000	0.35	3540
10-8000-5	US5	Antique Brass	Zinc Alloy	200	10000	0.35	3540
10-8000-10B	US10B	Oil Rubbed Bronze	Zinc Alloy	200	10000	0.35	3540
10-8000-15	US15	Satin Nickel	Zinc Alloy	200	10000	0.35	3540
10-8000-15A	US15A	Antique Nickel	Zinc Alloy	200	10000	0.35	3540
10-8000-26D	US26D	Brushed Chrome	Zinc Alloy	200	10000	0.35	3540

Proudly Supplied By

