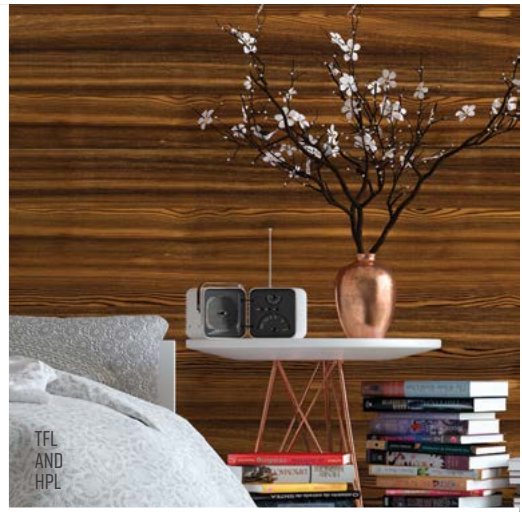




HIGH GLOSS
AND
MATTE PANELS



SINKS
AND
BOWLS



TFL
AND
HPL



EDGEBANDING

CATALOG
Los Angeles
· 2025 ·



VENEERS



COUNTERTOPS



PANELS



SOLID
SURFACE

RUGBY[®]
Architectural Building Products



America's Leading Distributor

For over 20 years Rugby Architectural Building Products has been a market leader in Los Angeles, California, where we are the primary source for hardwood plywood, lumber, TFL, solid surface and composite panel products.

Why make Rugby your supplier?

Rugby is proven reliability. Rugby is committed to fulfilling its promise to supply high quality products, competitively priced and delivered in a timely manner by industry professionals who know the value of exceptional service.



The mark of responsible forestry

Look for
FSC® Certified
Products



Table of Contents

iShopRugby.com	4
Staron: Acrylic Solid Surface.....	6
Staron: Sinks and Bowls	7
Shinnoki: Prefinished Wood Panels.....	8
Querkus: Textured European White Oak & Reclaimed Panels	9
StyleLite: High Gloss and Matte Panels.....	10
Lustrolite: Gloss and Matte Panels	11
EGR Decor PETLite: Polyethelene Terephthalate	12
GlacierGreen: High Density Machining Grade.....	13
American Laminates: Premium TFL Panels	14
Melaminetex: TFL	15
Tafisa: Karisma, Door Mouldings	16
Tafisa: Prelude Series.	17
EGGER: TFL, PerfectSense	18
EGGER: Stock Options	19
AraucoPly: Sanded Panels.....	20
Garnica: Plywood	21
John Boos: Countertops	22
Veneer Tech: Premium Hardwood Sheet Veneer & Edgebanding	23
Döllken: PVC Edgebanding.....	24
Integra Adhesives	25
Domestic Species: Hardwood Lumber	26
Domestic Species: Softwood Lumber.....	26
ADENTRA Imports	27

Shop quickly and easily on

iShop *RUGBY*.com



+125,000

products online at
iShopRugby.com



SHOP

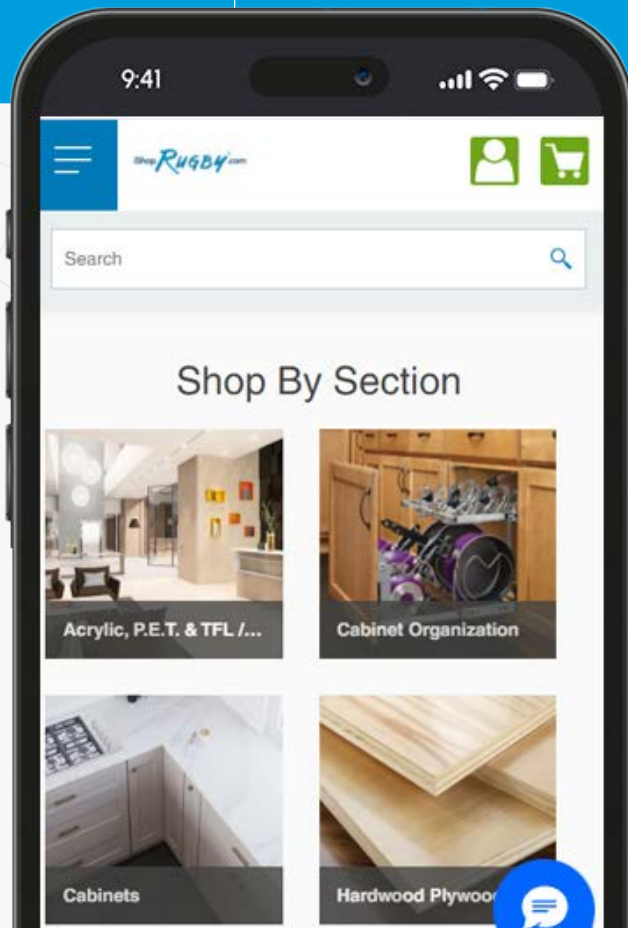
when it's most
convenient for
you 24/7



MANAGE

your account

- ✓ Place orders
- ✓ Check order status
- ✓ Research products
- ✓ ...and more!

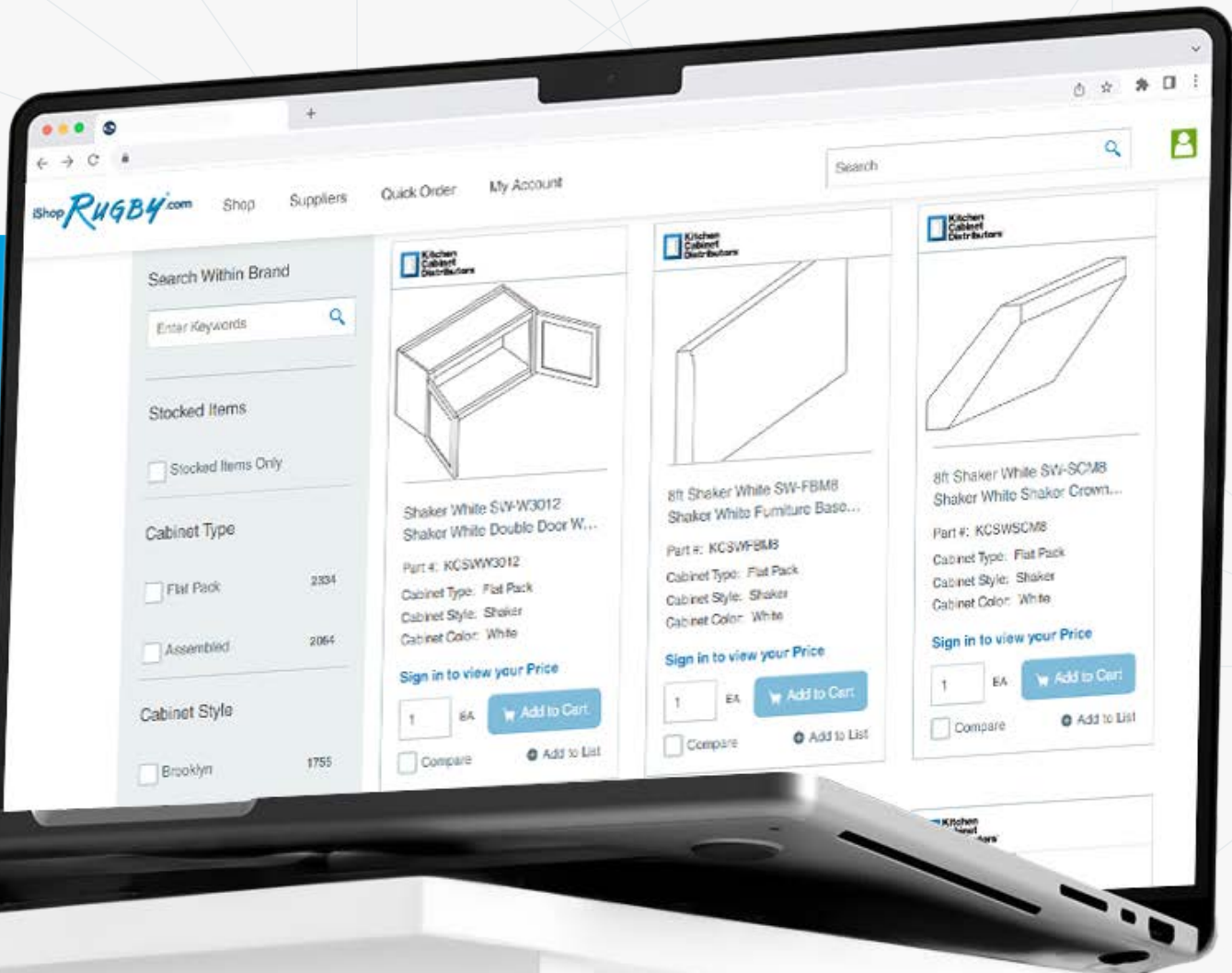


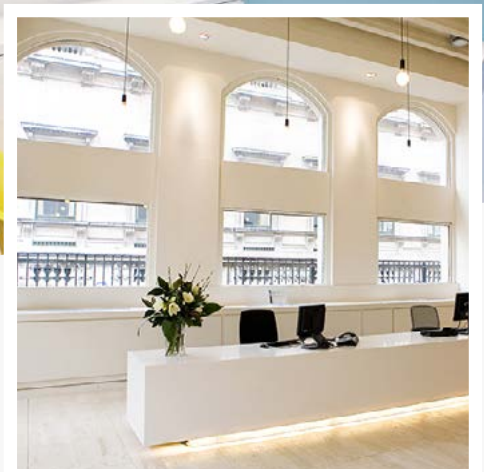
SCAN

THE QR CODE
with your tablet or phone
to see KCD Products



Experience iShop **RUGBY**.com today!



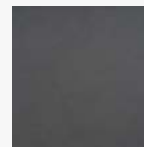


100% Acrylic Solid Surface

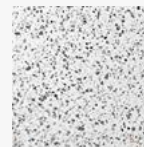
Staron high-performance acrylic solid surface is known for excellent workability and easy maintenance. Its homogenous, color-through composition is nonporous and ultra-hygienic, making Staron an ideal surfacing option for a wide range of commercial interior applications and residential spaces.

- ➔ 10-year limited commercial warranty
- ➔ Ultra hygienic / non-porous
- ➔ Thermo-formable
- ➔ 90 design inspired color options available
- ➔ Integrated sinks and bowls available. All ADA compliant
- ➔ Sample sets of Staron are available along with individual color samples

12 OF 90 COLORS STOCKED BY RUGBY



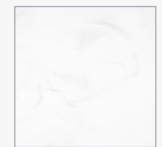
Griogio Concrete



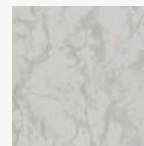
Venezia



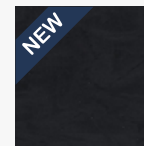
Downy Grey



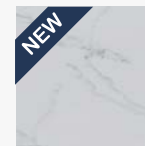
Downy White



Dawn



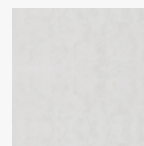
Premiere Gravita



Premiere Legato



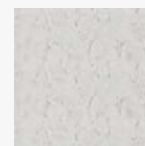
Premiere Largo



Cloudbank



Loam



Ocean View



Urban Grey



[CLICK TO VIEW BROCHURE](#)



[SAMPLE BINDER AVAILABLE](#)





Sinks and Bowls

An integral sink will improve the efficiency and hygienic qualities of a kitchen or bath area and, particularly, interior commercial applications. Staron all-acrylic sinks and bowls are installed in combination with Staron sheet materials as part of a continuous surface featuring imperceptible seams for a perfect, uninterrupted fit. That also means there are no gaps or crevices for bacteria or mold to accumulate and grow. Whichever style you choose, Staron's non-porous, hygienic surfaces will always be easy to clean and maintain.

Choose from three coordinated sink color options from a collection of popular models.

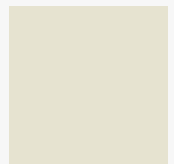
AVAILABLE COLORS



Bright White



Pearl



Ivory



Sink A1121



Sink A1181



Sink A1231



Sink A2311



Bowl A3181



Bowl A3211



[CLICK TO VIEW BROCHURE](#)

SHINNOKI® PREFINISHED WOOD PANELS



Enhanced Shinnoki Collection For 2024

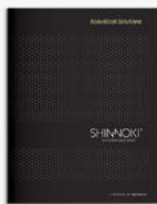
- Prefinished wood panels – 5% sheen matte finish
- Mixmatching technique gives a natural look of solid wood
- Europe’s top designers put together range of selections
- Protective coat guards against marks and scratches
- 3/4” 4’ x 9’ NAF MDF – 2 sided
- Prefinished 0.6mm edgeband and 1mm ABS edgeband available
- FSC® certified available on request
- TSCA Title VI compliant

18 DESIGNS STOCKED BY RUGBY

Bondi Oak	Milk Oak	Pebble Triba	Ivory Oak
Ivory Infinite Oak	Natural Oak	Frozen Walnut	Manhattan Oak
Desert Oak	Sahara Oak	Terra Sapele	Cinnamon Triba
Smoked Walnut	Pure Walnut	Shadow Eucalyptus	Raven Oak
Burley Oak	Stardust Walnut		



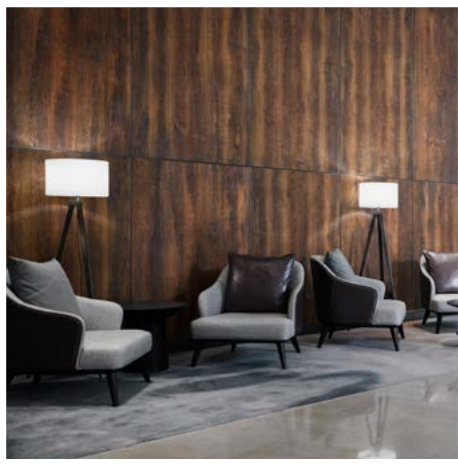
CLICK TO VIEW BROCHURE



CLICK TO VIEW BROCHURE



EDGEBANDING



Textured European White Oak & Reclaimed Panels

- ➔ Wire brushed & patented “saw effect” scratching
- ➔ Mixmatch technique to give natural appearance of solid wood
- ➔ Thick cut veneer for deep brushing and scratching
- ➔ European white oak – matched for color consistency
- ➔ Reclaimed veneer from railways in Europe
- ➔ 20mm 48.8” x 98.4” on MDF
- ➔ 0.8mm and 1mm edgeband available, brushed and scratched

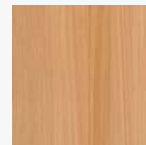


[CLICK TO VIEW BROCHURE](#)

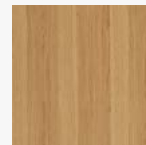


EDGEBANDING

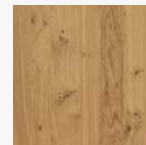
15 AVAILABLE DESIGNS



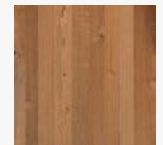
Adagio



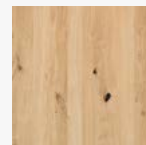
Allegro



Vivace



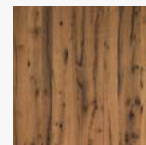
Retro Hoboken



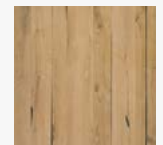
Retro Harlem



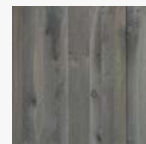
Retro Baltimore



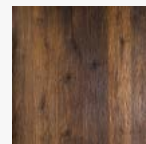
Original Hoboken



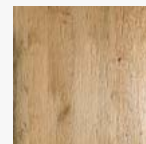
Original Harlem



Original Baltimore



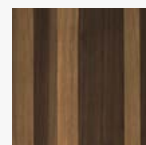
Intense Hoboken



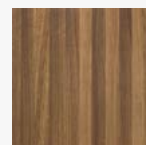
Intense Harlem



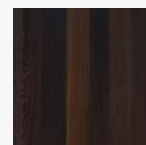
Intense Baltimore



Smoked Havana



Smoked Arabica



Smoked Robusta



10 OF 44 AVAILABLE PATTERNS

The Ultimate High Gloss and Matte Panel System

Manufactured using world class co-extrusion technology and polyurethane reactive resins, Stylelite possess an optical grade finish suitable for any residential, retail, commercial, cultural or institutional project where a ripple free, highly durable and easy to maintain contemporary finish is desired.

EGR are opening first U.S. production facility in Southern California in Q1, 2024.

- Won't chip, crack, peel, flake or delaminate
- Perfectly balanced
- Highest workability in category
- Easily thermoformable for near-seamless installation
- Robust color range available in different cores, lengths & thicknesses
- UV & color change protected
- 7-10 Year Warranty
- Generally repairable if lightly of moderately scratched saving time, money and inconvenience



Alabaster



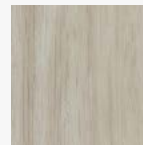
Arctic



Ash



Carbon



Lavato Oak



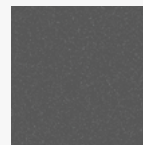
Mocha



Ruby



Sand



Graphite



Slate



LAMINATED SAMPLES AVAILABLE



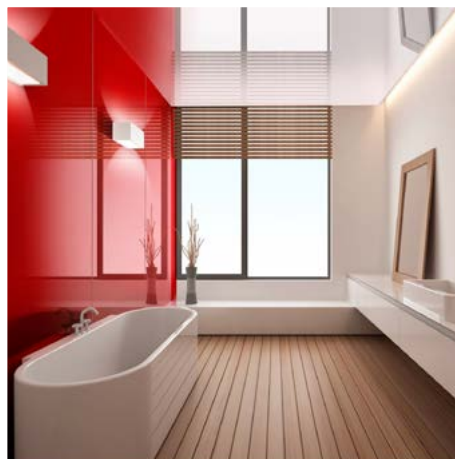
CLICK TO VIEW BROCHURE



SAMPLE BINDER AVAILABLE



EDGEBANDING



Versatile High Gloss Polymer Panels

Combining its beautiful ripple free, highly scratch resistant surface with magnificent panel depth and light weight, Lustrolite® is a vastly superior alternative to tiles, glass and other materials.

Lustrolite's impressive list of features includes:

- Brilliant mirror reflection and high gloss finish
- Significantly less expensive than equivalent glass products
- Effortless to clean due to its advanced scratch and chemical resistant hard coating
- Can be cut, drilled, filed and planed with standard woodworking tools (e.g. circular saws, jigsaws, files and planers)
- Half the weight of equivalent glass panels yet up to 25 times stronger making handling, installation and longevity vastly superior
- Fantastic for hygiene as Lustrolite's smooth surface does not harbor mold or bacteria



[CLICK TO VIEW BROCHURE](#)



P.E.T. (Polyethelene Terephthalate)

Economical P.E.T. panels ideal for the manufacture of commercial and residential cabinetry, closets, furniture and fixtures.

Features:

- ➔ Made in the USA
- ➔ Manufactured from recyclable P.E.T. (polyethelene terephthalate) polymer films
- ➔ Ultra high gloss and anti-finger print supermatte finishes and colors
- ➔ Perfectly balanced 2S panels
- ➔ PUR laminated for increased durability
- ➔ Excellent scratch resistance
- ➔ EPA TSCA TVI compliant
- ➔ Matching edge band
- ➔ Unrivalled technical support
- ➔ Available throughout North America

COLOR RANGE



Bright White High Gloss



Bright White Supermatte



Light Gray Supermatte



Dark Gray Supermatte



Soft White High Gloss



Soft White Supermatte



Black Supermatte



Dark Blue Supermatte



[CLICK TO VIEW BROCHURE](#)



GLACIERGREEN™
LOW EMISSION MDF/HDF

When it comes to value, what really counts is not how much the MDF costs, but how much it costs to use.

Weyerhaeuser Glacier Green™ High Density Machining Grade is ideal

- ➔ Thermo-Foil Lamination
- ➔ Heat/UV-Cured Dry Coatings
- ➔ Water & Solvent-Based Paints
- ➔ Thickness 0.375" – 1.00"



**CLICK TO VIEW
BROCHURE**



AMERICAN LAMINATES
PREMIUM TFL PANELS



American Laminates Premium TFL Panels

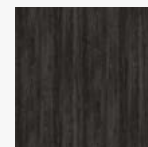
American Laminates, Inc. manufactures and markets melamine panels in the United States. It markets its products through a distribution network in California, Arizona, Nevada, and Utah. The company was founded in 1989 and is based in Riverbank, California.

- Standard wood edgebanding
- 500' rolls, fleeced and sanded
- 250' rolls, preglued EVA hotmelt
- UV prefinished, preglued or fleece backed
- Widths ½" to 2"
- Custom widths and lengths available

AVAILABLE COLORS (4X8)



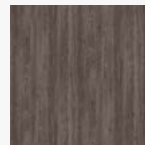
Black Walnut



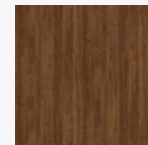
Bleached
Blackwood



Butternut



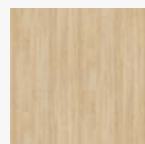
Ebony Oak



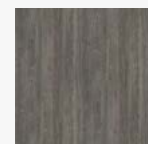
English Walnut



Greywashed
Ash



Natural Ash



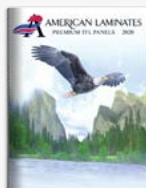
Pepperwood



Whitewashed
Ash



SAMPLE BINDER
AVAILABLE



CLICK TO VIEW
BROCHURE



PVC Edgebanding



Laminated Samples
Available



MELAMINETEX
DECORATIVE BOARD



Traditional line

Designed to provide a mixture of warm colors of wood and solid colors, to dress warmly and design the environments according to the taste of each client. All our traditional line can be applied to any of our textures, obtaining a wide variety of melamine models.

Textures

All our textures complement our traditional portfolio (wood and solid), generating new appearances and aesthetics to each one of its environments, kitchens, offices and other areas, guaranteeing spaces adapted to the most avant-garde decoration trends.

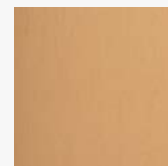


CLICK TO VIEW
BROCHURE

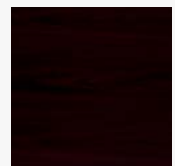
WOODGRAIN COLORS



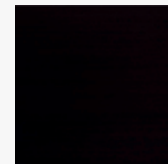
Sweet Maple



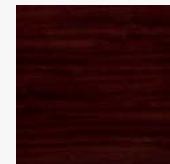
Solid Maple



Fresh Walnut



Mambo Pine

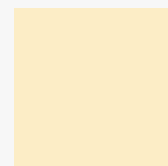


Mahogany Tex

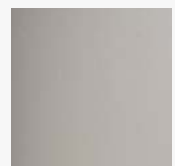
SOLID COLORS



White Tex



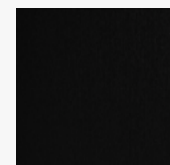
Almond Light



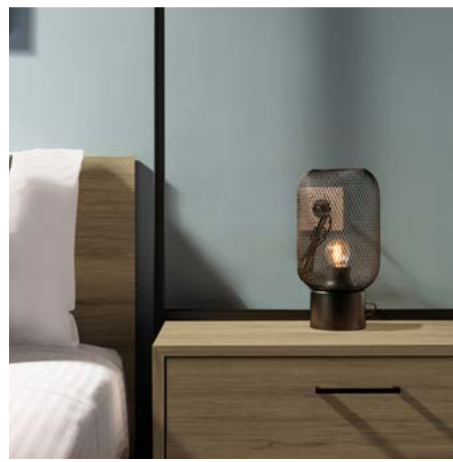
Soft Grey



Dark Grey



Black Tex



karisma

Karisma, the new milestone of the Prelude Series, is a new texture that perfectly reproduces a wirebrushed effect. Karisma's magnetism has made it a go-to industry staple. Its random mix of brushstroked embossing and matteinfused accents give it a natural, authentic look.

Ask us about our **Karisma Moulding Program**



79 matching colors from Prelude and Sommet series available for cabinet door mouldings.

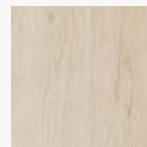


CLICK TO VIEW BROCHURE



SCAN OR CLICK TO WATCH KARISMA PRODUCT VIDEO

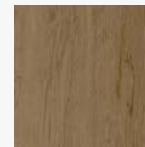
SPALTED MAPLE



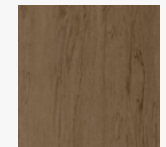
L586(K)
Natural Affinity



L587(K)
Sugar Rush

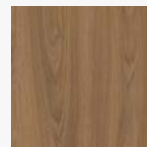


L588(K)
Sweet & Savory

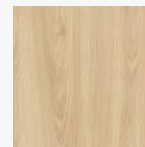


L589(K)
Salt of the Earth

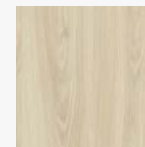
ACACIA BRAZILIAN



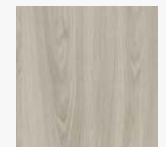
L592(K)
Kiss Curl



L591(K)
Acacia Honey



L590(K)
Love at First Sight



L593(K)
Mastermind

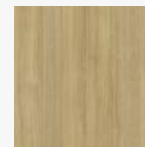
OAK



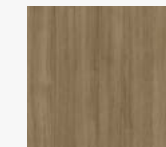
L580(K)
Free Spirit



L581(K)
Sheer Beauty



L585(K)
Rhapsodie



L582(K)
Fashionista

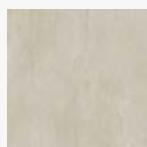


L584(K)
The Chameleon

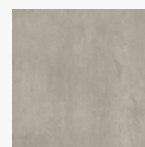


L583(K)
First Class

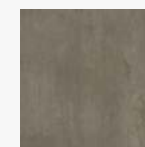
CONCRETE



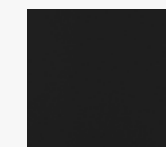
L830(K)
Force of Nature



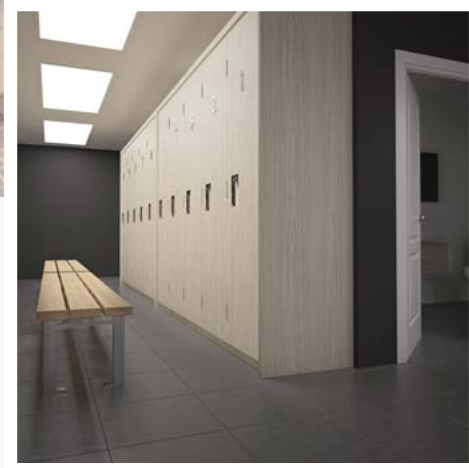
L831(K)
Rock Solid



L832(K)
Urban Vibe



L203(K)
Black



PRELUDE[®]

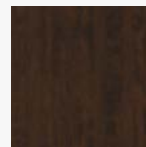
SERIES

Some of the most desirable decorative designs ever introduced in the marketplace, readily available in 1/4, 3/4, HPL and 1mm banding. Great colors that you know and love, as well as soon to be new favorites in the exciting firebrushed Karisma texture. Karisma features 3 concretelike patterns as well as 6 rift white oak patterns.

AVAILABLE COLORS



L421C
Candlelight



L444C
Chocolate
Pear Tree



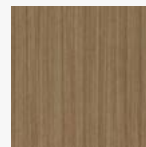
L420C
Summer
Flame



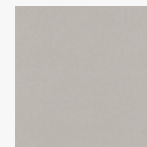
L535A
Southwester



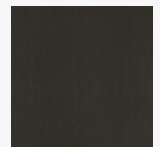
L544A
Niagara



L556R
Laurentian
Path



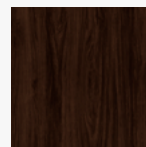
L474
Brushed
Aluminum



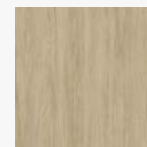
L532A
Latitude West



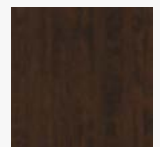
L543A
Spring Blossom



L552
Appalachia



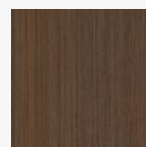
L546A
Mojave



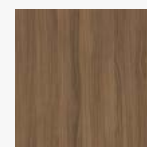
L544A
Chocolate Pear
Tree



L492R
White
Chocolate



L493R
Milk
Chocolate



L481S
Nutmeg

NEW
COLLECTION



Introducing EGGER Decorative Collection 24+

This highly anticipated collection is packed full of luxurious textures, tactile material decors, and contemporary solid colors. The Decorative Collection is well known in the industry for its strong sustainability credentials, exceptional customer service, and market leading product innovation.

Feelwood synchronized pore (EIR) on TFL

EGGER's Feelwood range of decors specially designed with multi-layers of papers to create a depth of texture often seen with solid wood. These decors represent the premium category among the 86 TFL decors in the EGGER North American Collection.

The Decorative Collection 24+

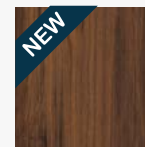
(Many Other Decors Available)



H1367 ST40
Light Natural
Casella Oak



H1223 ST19
Sevilla Ash



H1307 ST19
Brown Warmia
Walnut



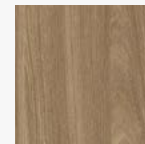
H1180 ST37
Natural
Halifax Oak



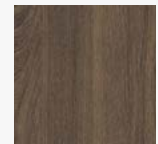
H1181 ST37
Tobacco
Halifax Oak



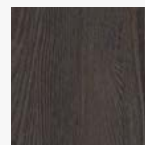
H1210 ST33
Grey-Beige
Tossini Elm



H1212 ST33
Brown Tossini
Elm



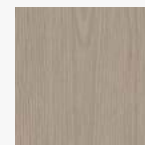
H1220 ST33
Hazelnut
Tossini Elm



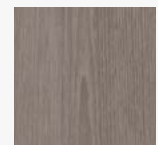
H1221 ST33
Espresso
Tossini Elm



H1222 ST33
Fox Grey
Tossini Elm



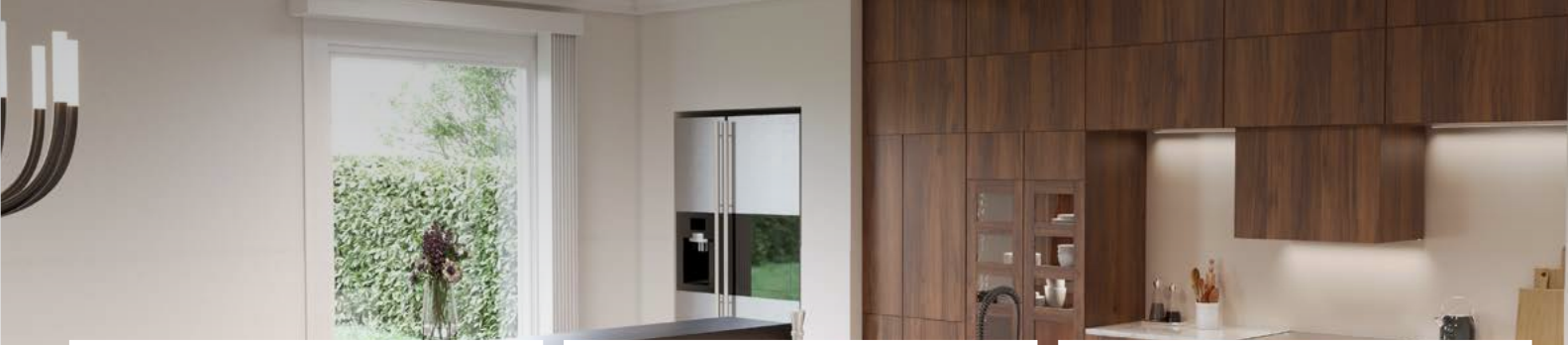
H1288 ST19
Stone Grey
Frozen Wood



H1291 ST19
Grey Frozen
Wood



All Available Decors Can Be Ordered On Request.
Please Contact Your Local Rugby Branch For More Details.



PerfectSense Lacquered Boards

The future has arrived. PerfectSense lacquered boards are much more than a conventional melamine-faced MDF board. They epitomise the next generation of matte or gloss textures and represent a new premium standard of board.

Manufactured using a sophisticated lacquering process that is applied with precision to the surface, PerfectSense Gloss offers an exceptional reflective effect and smooth finish. PerfectSense Matt, by contrast, feels warm and velvety. Compared to many other lacquered boards, they are both scratch resistant and robust.

Benefits:

- ➔ High depth effect with mirror gloss or velvety finish
- ➔ Large board format of 110" x 81.5" supports economic manufacturing supports economic manufacturing
- ➔ High resistance to micro-scratches ensures long lasting brilliant surface
- ➔ Antibacterial surface property according to ISO 22196

Stock Options

Exact matching TFL, HPL and Edgebanding are available through Hardwoods as your one stop shop. Exact match edgebanding and laminates eliminates the need to source a close match.

In-stock colors are available on your next delivery, with the top decors stocked here in Midwest, and all 86 North American decors available within 3 - 4 weeks.



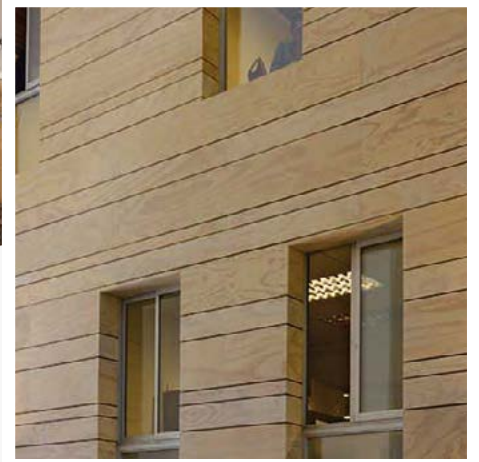
CLICK TO VIEW
BROCHURE



DECORATIVE
COLLECTION FOLDER



EDGEBANDING
AVAILABLE



Sanded Panels

AraucoPly® Sanded Panels are finished with 150-grit sandpaper on the face and 120-grit sandpaper on the back, facilitating easy finishing with excellent results. All gradestamped AraucoPly® Sanded Panels are manufactured in accordance with the US PS 1-09 product standard, and all ACX and BCX products are PS1-09 underlayment compliant and are edge stamped as such by TECO.

- 100% radiata pine
- Stable composed core with minimum voids
- High quality solid face
- Ideal for interior and exterior applications
- Pre-sanded and ready to finish
- Allows a variety of finishes



[CLICK TO VIEW BROCHURE](#)



Plywood

Garnica challenges the ordinary by exploring the limits of perfection to engineer the finest plywood for the most demanding clients. Their lightweight panels are notable for an array of exceptional properties including consistent quality, stability, and machinability.

Why Garnica?

- ➔ Products meet or surpass the level of performance customers demand
- ➔ Comply with the regulations of each market
- ➔ Outstanding stability, dimensional uniformity and high aesthetic and visual appearance
- ➔ Lightness, easy to machine and perfect finish
- ➔ Product range is comprised of seven families of plywood products; developed to meet specific market needs, such as resistance, performance and durability
- ➔ All Garnica products are sourced from sustainable woods plantations
- ➔ Outstanding finishes bring added value to our products, ensuring seamless integration on any projects

FINISHES



Varnish



HPL/CPL



Medium Density Overlay



Prime



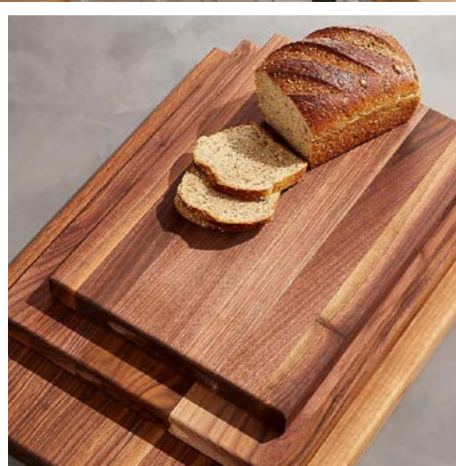
Tongue & Groove



Groove



**JOHN BOOS
& CO.**



Ultra-Premium Countertops

Built on a history of over 125 years of American craftsmanship, Boos® butcher block surfaces fill your kitchen with timeless tradition in countertop appearance while maintaining a natural food safe element for food preparation. Ultra premium countertops are manufactured with full length continuous rails from our choice selections of American hardwoods.

Ultra-Premium Countertops

Boos® Blended kitchen countertops are a full character offering of nature's design at its best. Manufactured with random lengths of finger-jointed interior rails, the Blended KCT series offers a harmonious blend of heartwood, sap, natural mineral, and grain.

End Grain Countertops

Easy on the eye, easy on the knife - Boos® end grain island tops are manufactured in a vertically glued "checkerboard" lay-up. This unique island top offering reveals the best of the natural elements in hardwood grain.



[CLICK TO VIEW
BROCHURE](#)



Premium Hardwood Sheet Veneer & Edgebanding

Veneer Technologies, Inc. manufactures high end decorative hardwood veneer faces. They carry most domestic species and have access to many exotic species from around the world. They currently operate ten continuous cross feed splicers, producing approximately 6.5 million finished square feet of face veneer per month.

Sheet Veneer

Manufactured with a select grade face veneer crosslinked to a variety of backers. Backers include 10 mil, 20 mil, 2-ply with cross-grain back, 3M peel-n-stick, polyback, true phenolic. Sizes are 4' x 8', 4' x 10', 4' x 12'.

Wood Edgebanding

- ➔ Standard wood edgebanding
- ➔ 500' rolls, fleeced and sanded
- ➔ 250' rolls, preglued EVA hotmelt
- ➔ UV prefinished, preglued or fleece backed
- ➔ Widths ½" to 2"
- ➔ Custom widths and lengths available

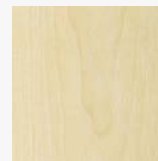
Melamine Edgebanding

- ➔ Standard colors
- ➔ 250' rolls
- ➔ Preglued

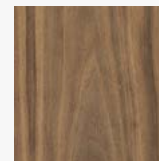
Thick Wood Edge Rolls

- ➔ 328' rolls. Thickness 1mm, 1.5mm, 2mm and 3mm

MANY DOMESTIC AND EXOTIC SPECIES AVAILABLE



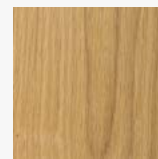
White Maple



Walnut



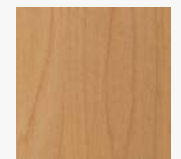
Cherry



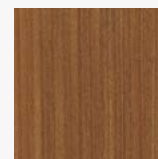
White Oak



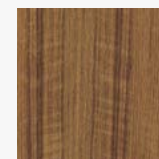
European Beech



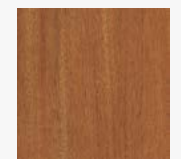
Alder



Sapele



Teak



Mahogany

ⓘ Please inquire about available widths and species



CLICK TO VIEW BROCHURE



PVC Edgebanding

Doellken PVC Edgebanding is the finest, most consistent product available on the market today. Typical applications of PVC Edgebanding include residential and office furniture, institutional case goods (laboratories, hospitals, medical offices, schools, etc.), store fixtures, kitchens, locker rooms and numerous others. Doellken Edgebanding comes in thicknesses of .018" (0.45 mm) to 3 mm and widths ranging from 5/8" (16mm) to 2-3/16" (55mm).

- ➔ The SpecLine and DoellkenFlex program are available from stock in 5 different sizes
- ➔ All edgebanding products are available in solid colors, designer patterns and woodgrains
- ➔ With 11 different embosses, your edgebands will have a natural appearance and a deep emboss feel



[CLICK TO VIEW BROCHURE](#)



Adhesives

Manufacturers of Innovative Adhesive Products for Solid Surface, Quartz Surfaces, Natural Stone and Composites. Surface Bonder. Epoxy/Methacrylate Adhesive for Quartz, Natural Stone, Ceramics and Solid Surface.

Surface Bonder

Epoxy/Methacrylate Adhesive for Quartz, Natural Stone, Ceramics and Solid Surface. Used for Lamination, Seaming, V-Grooving/Mitered Edges.

Rodding Bonder

Epoxy/Methacrylate Adhesive for secure embedding Reinforcing Rods into Natural Stone.

Component Bonder

Multipurpose adhesive great for attaching fasteners to Quartz, Natural Stone, Ceramics and more.

Substrate Bonder

Flexible, polyurethane that bonds to nearly anything. Faster and stronger than Silicone.

The Mitre System

Integra introduces the Mitre System. Three tools to achieve perfect miter edges.



[CLICK TO VIEW BROCHURE](#)

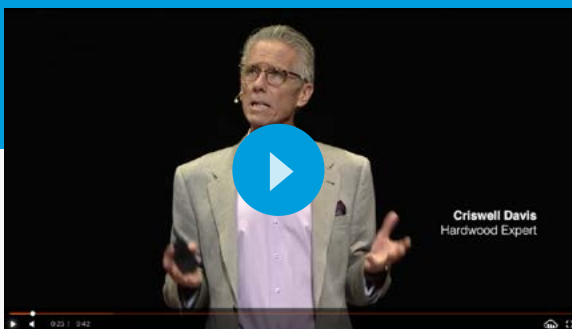
Hardwood Lumber

Domestic Species: Hardwood

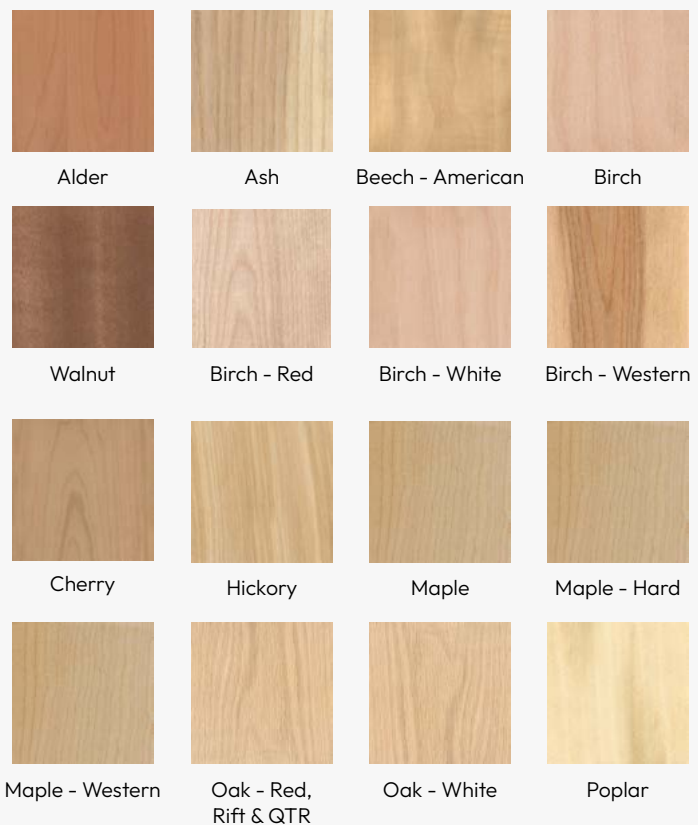
- ➔ 4/4 through 16/4. All lengths and grades
- ➔ S2S, SL1E and ripping available
- ➔ Width sorted Red Oak, Hard Maple, and Poplar
- ➔ S4S, Sanding and Custom millwork packages including custom knife grinding available

TED Talks: How Hardwood Lumber Improves Our Lives

– Criswell Davis | Hardwood Expert



 WATCH NOW



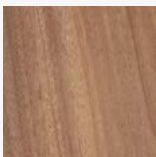
Domestic Softwood

A comprehensive assortment of Domestic and Imported Options



Imported Species

To ensure prompt supply of exotics and imports, Hardwoods import consolidation yard is located in Leland, North Carolina.



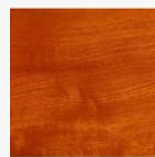
African Mahogany



Afronesia



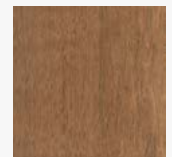
Anigre



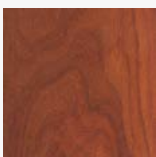
Genuine Mahogany



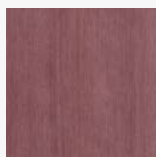
Iroko



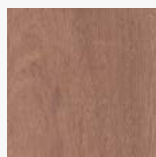
Jatoba



Padouk



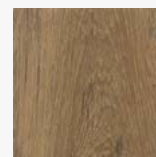
Purpleheart



Sapele



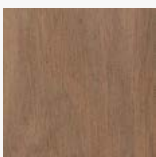
Spanish Cedar



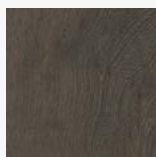
Teak



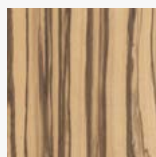
Tigerwood



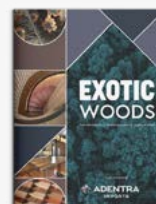
Utile (Sipo)



Wenge



Zebrawood



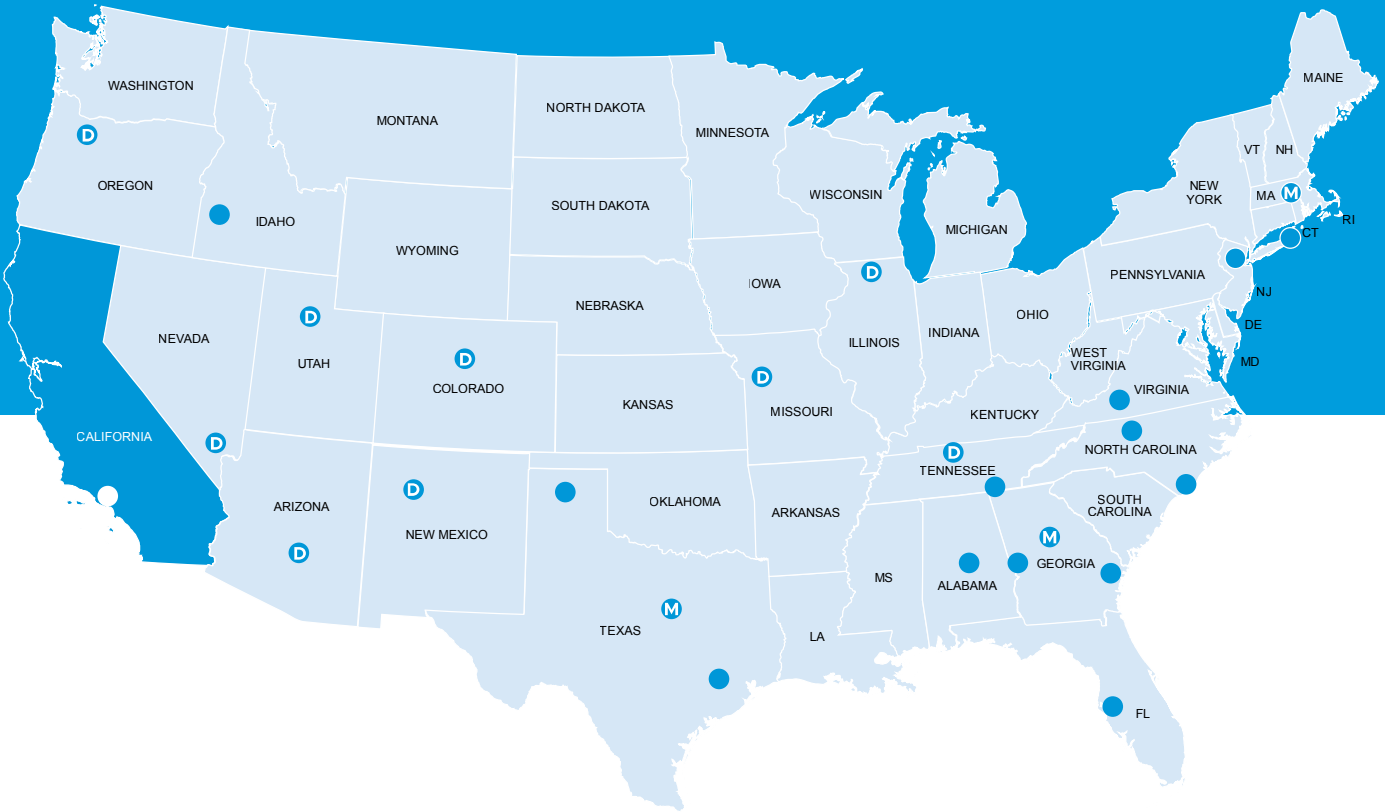
[CLICK TO VIEW BROCHURE](#)



[ADENTRA IMPORTS STOCK LIST](#)

[CLICK HERE TO SIGN UP SIGN UP](#)

Servicing America



D Door Manufacturing **M** Moulding and Millwork Manufacturing

Los Angeles, CA

909-466-7315

Albuquerque, NM	Boston Metro - Stoughton	Denver, CO	Olathe, KS	Salt Lake City, UT
505-924-2270	781-341-9255	303-296-7260	913-738-8074	801-972-9393
Atlanta, GA	Carlstadt, NJ	Houston, TX	Phoenix, AZ	Savannah, GA
404-699-3900	201-807-9701	713-692-3388	602-252-3696	912-965-1061
Amarillo, TX	Chattanooga, TN	Las Vegas	Portland, OR	Tampa, FL
806-352-2382	423-332-1377	702-248-0050	503-692-3322	813-888-6824
Birmingham, AL	Columbus, GA	Nashville, TN	Roanoke, VA	Wilmington, NC
404-792-2290	706-565-5337	615-885-0355	540-857-0425	910-794-7225
Boise, ID	Dallas, TX	NY Metro	Rockford, IL	Winston-Salem, NC
208-336-3911	214-638-5161	631-242-4369	815-965-9439	336-993-8686

