



# Kitchen Cabinet Distributors™



# Cabinet Product Catalog 2024

## SOUTHEAST

ATLANTA • BIRMINGHAM • CHARLOTTE • CHATTANOOGA • COLUMBUS • KERNERSVILLE • ROANOKE • SAVANNAH • TAMPA • WILMINGTON

Proudly Supplied By



**RUGBY**<sup>®</sup>  
Architectural Building Products

# Shop quickly and easily on

# iShop **RUGBY**.com



**+125,000**  
products online at  
iShopRugby.com



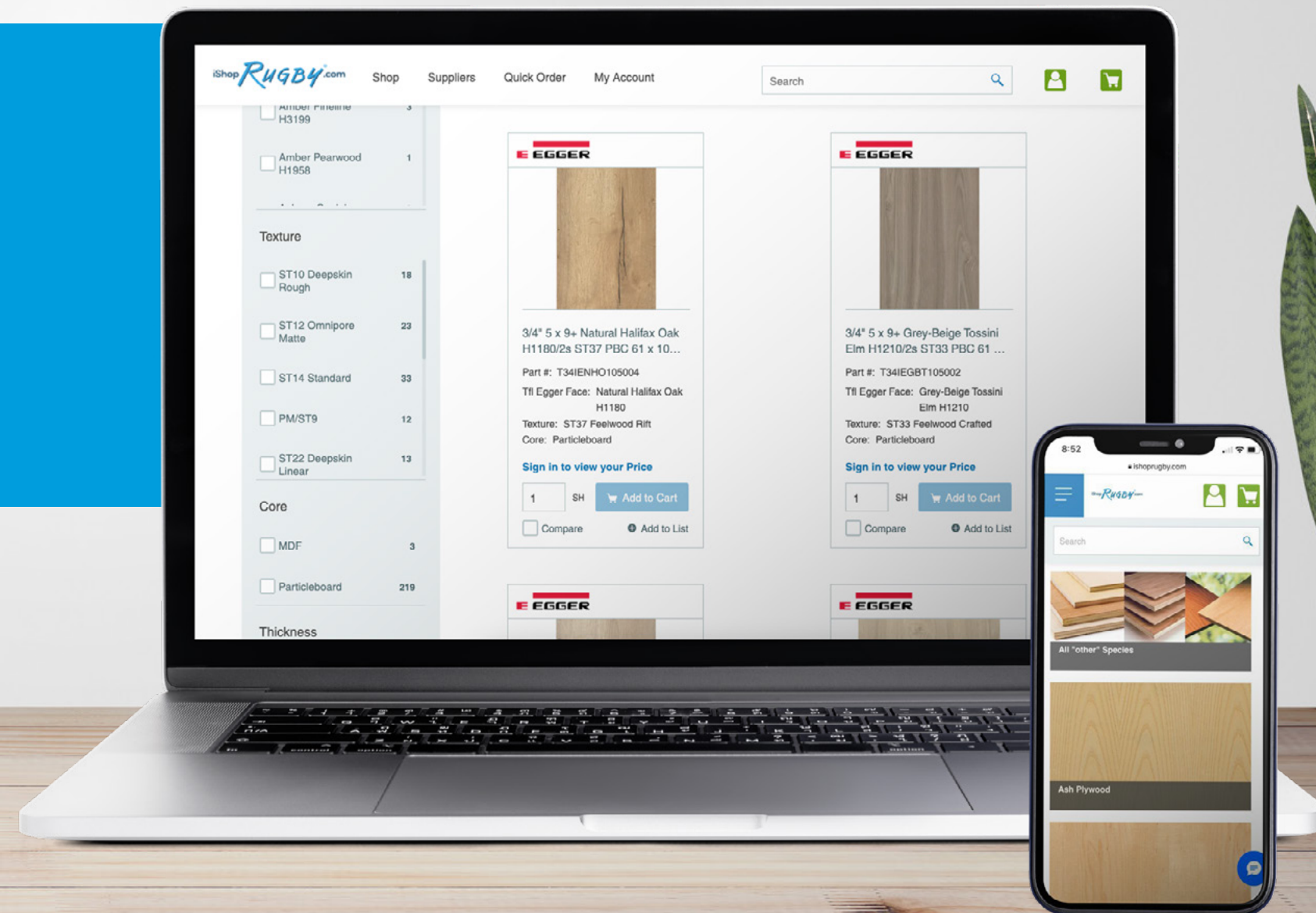
**SHOP**  
when it's most  
convenient for  
you 24/7



**MANAGE**  
your account

- ✓ Place orders
- ✓ Check order status
- ✓ Research products
- ✓ ...and more!

Experience iShop **RUGBY**.com today!



# Our Vision

We provide thoughtful products and exceptional service to inspire spaces where people love to live.

## Table of Contents

Cabinet Lines	4
Product Comparison	13
Product Specifications	15
Wall Cabinets	16
Base Cabinets	19
Tall Cabinets	23
Vanity Cabinets	24
Moldings & Trim	26
Fillers & Panels	27
Accessories	28
Decorative Hardware	31
Products By Line	37

# Cabinet Lines



Our **Premier Series** offers distinctive touches and superb craftsmanship, satisfying either the traditional or modern design palette with a look to fit any lifestyle.

Our **Builder Series** offers creative solutions for many design needs, all at an attractive price point. Bringing your space all together will create stylish rooms sure to become your favorite place, affordably!

## Premier Series



SHAKER SAND (SS)

SHAKER DESIGNER WHITE SLAB (SW)

SHAKER DESIGNER WHITE 5PC (SW)

SHAKER ESPRESSO (SE)

SHAKER KODIAK (SK)

BROOKLYN MODERN GRAY (BG)

BROOKLYN FAWN (BF)

## Builder Series



BROOKLYN SLATE (BS)

BROOKLYN MIDNIGHT (BM)

BROOKLYN BRIGHT WHITE (BW)

NAPA WHITE (NW)

ESSENTIAL WHITE (EW)

ESSENTIAL GRAY (EG)



AS SEEN ON  
PROPERTY BROTHERS  
BUYING+SELLING

# Shaker

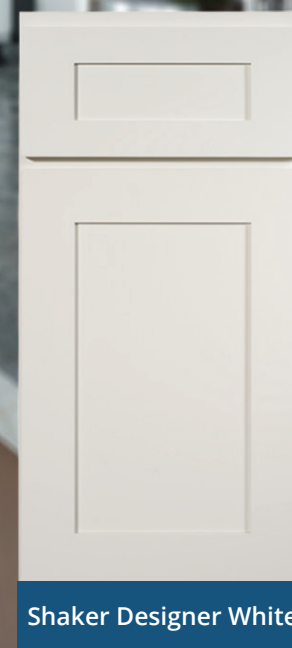
Classic, crisp, and modern, this cabinet has a versatile appeal. The design incorporates the architectural shaker style with pleasing proportions. Shaker White is available with a slab or 5-piece drawer front yielding a contemporary or classic display.

- Full overlay doors provide a seamless aesthetic
- Soft-close doors and drawers prevent slamming
- Dovetail drawer craftsman construction
- Full extension drawers ensure easy access
- Durable solid wood cabinet box and drawers
- Premium Sherwin-Williams® finish delivers a lifetime of beauty
- Full line of accessories and upgrades available



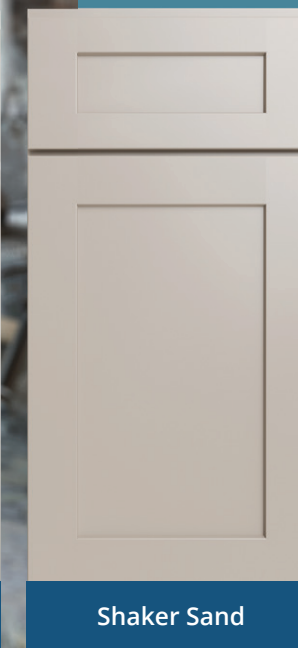
Shaker Designer White

\*Slab



Shaker Designer White

\*5 Piece



Shaker Sand



Shaker Kodiak



Shaker Espresso

# Brooklyn

This transitional door complements a range of style from modern to vintage to traditional. The selection of color options within the Brooklyn line offers a solution for many design needs. Find modern charm in Brooklyn Gray or install a Fawn, Slate or Midnight island for the perfect kitchen accent that your guests will love. Brooklyn's classic Bright White finish provides a timeless backdrop for a space that will become a gathering spot for years to come.

- Full overlay doors provide a seamless aesthetic
- Soft-close doors and drawers prevent slamming
- Dovetail drawer craftsman construction
- Full extension drawers ensure easy access
- Solid wood cabinet box and drawers provide exceptional durability
- Premium Sherwin-Williams® finish delivers a lifetime of beauty
- Available with a full line of accessories and upgrades



Brooklyn Bright White

Brooklyn Modern Gray

Brooklyn Midnight

Brooklyn Slate

Brooklyn Fawn

# Napa

The Napa White line is an adaptable option that adds dimension and elegance. The bright white finish and raised center panel provide a charming and traditional feel that is perfect for any home.

- Full overlay doors provide a seamless aesthetic
- Soft-close doors and drawers prevent slamming
- Dovetail drawer craftsman construction
- Full extension drawers ensure easy access
- Solid wood cabinet box and drawers provide exceptional durability
- Sherwin-Williams® finish delivers a lifetime of beauty
- Available with a full line of accessories and upgrades that add style and function



Napa White

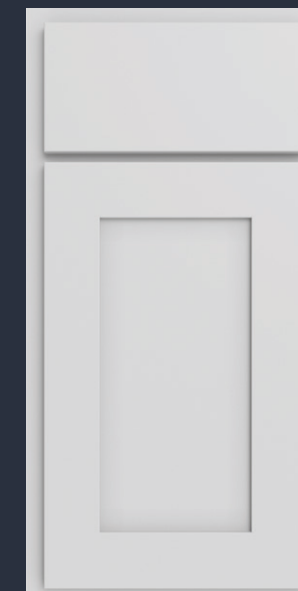




# Essential

If your design style includes a time-honored look or a contemporary touch then the Builder Series is a great choice for any room. Imagine, your new favorite space, affordably priced.

- Offered in Gray and White to complement many decors.
- Full or partial overlays give you the option to match your current style
- Broad selection of SKU's and moldings will give you functionality and unique touches
- Our Perfect Pairings Decorative Hardware brings it all together



Essential White

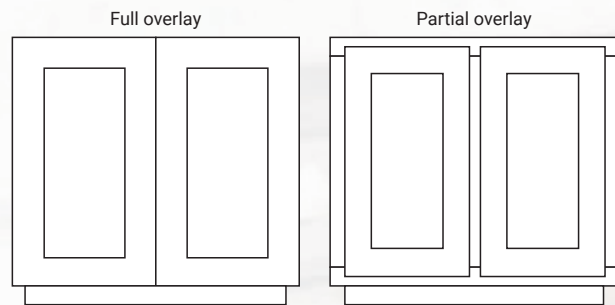


Essential Gray



	Premier Series
Cabinet Box	1/2", 7 Ply, Plywood
Drawer Box	5/8" Solid Wood, Dovetailed
Drawer Slides	Under Mount, Full Extension, Metal, Soft Close w/ Ball Bearings
Wood Species	Birch
Door Hinge	DTC 6 Way Adjustable, Soft Close
Shelves	Adjustable, 3/4" Plywood
Exterior Finish	Match Doors
Interior Finish	Natural
Face Frame	1 1/2" Rails and Stiles, Solid Wood
Full Overlay Door	5-Piece with Solid Center Panel; 2 3/4" Stiles and Rails
Certifications	TSCA VI, CARB, KCMA

	Builder Series
Cabinet Box	1/2", Particleboard, Plywood Back
Drawer Box	5/8" Solid Wood, Dovetailed
Drawer Slides	DTC Under Mount, 3/4" Extension, Non-Soft Close
Wood Species	MDF Door & Drawers, Rubberwood Face Frame
Door Hinge	DTC 6 Way Adjustable, Soft Close
Shelves	Adjustable, 3/4" Particleboard
Exterior Finish	Match Doors
Interior Finish	Natural Melamine
Partial Overlay	5-Piece HDF Door Rails and Stiles with MDF Center Panel, 2-3/4" Stiles and Rails
Face Frame	1 1/2" Rails and Stiles, Solid Wood
Certifications	TSCA VI, CARB, KCMA



# Product Specifications

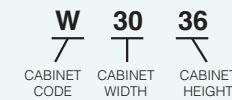
Wall Cabinets - Base Cabinets - Tall Cabinets - Vanity Cabinets  
Molding & Trim - Fillers & Panels - Decorative Accessories

- P** Premier Series
- B** Builder Series

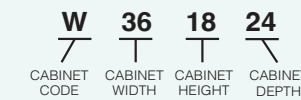
CREATIVE OPTIONS  
FOR ANY SPACE

## Wall Cabinet Coding

Standard (12" Deep)



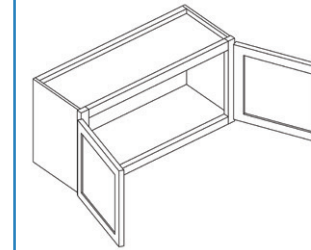
Refrigerator



Notes:

- Standard wall cabinets are 12" deep. Refrigerator cabinets are 24" deep.
- Add door thickness for total cabinet depth.
- Please refer to the Products by Cabinet Line chart to determine which products are carried for each cabinet line.

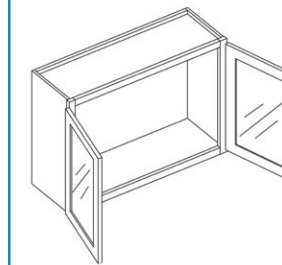
## 12" - 21" High Double Door Wall



Item Code	Outer Dimensions				
	W	H	D	P	B
W3012	30	12	12	•	•
W3612	36	12	12	•	•
W3015	30	15	12	•	•
W3312	33	12	12	•	-
W3315	33	15	12	•	•
W3615	36	15	12	•	•
W3018	30	18	12	•	•
W3318	33	18	12	•	-
W3618	36	18	12	•	•
W3021	30	21	12	•	-

\*Premier line drawing shown.  
Builder is a partial overlay.

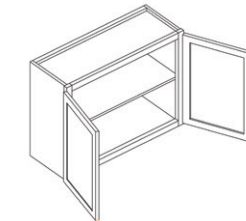
## 15" Wall Stacking Cabinets with Glass



Item Code	Outer Dimensions				
	W	H	D	P	B
WS2415-2	24	15	12	•	-
WS2715-2	27	15	12	•	-
WS3015-2	30	15	12	•	-
WS3315-2	33	15	12	•	-
WS3615-2	36	15	12	•	-

\*Door comes pre-routed with glass insert and finished interior

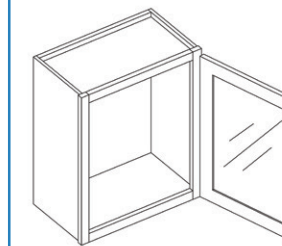
## 24" High Double Door Wall



Item Code	Outer Dimensions				
	W	H	D	P	B
W3024	30	24	12	•	•
W3324	33	24	12	•	-
W3624	36	24	12	•	•

\*Premier line drawing shown.  
Builder is a partial overlay.

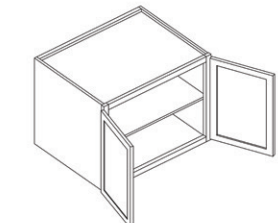
## 15" Wall Stacking Cabinets with Glass



Item Code	Outer Dimensions				
	W	H	D	P	B
WS1215	12	15	12	•	-
WS1515	15	15	12	•	-
WS1815	18	15	12	•	-
WS2115	21	15	12	•	-

\*Door comes pre-routed with glass insert and finished interior

## 24" Deep Wall (Refrigerator Cabinet)

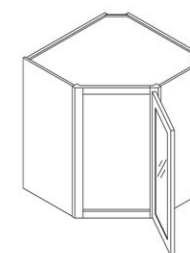


Item Code	Outer Dimensions				
	W	H	D	P	B
W331824	33	18	24	•	-
W332424	33	24	24	•	-
W361824	36	18	24	•	•
W362424	36	24	24	•	•

\*Premier line drawing shown.  
Builder is a partial overlay.

\*331824 and 361824 do not have a shelf

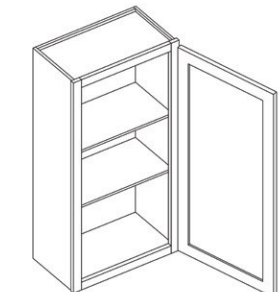
## 15" Corner Wall Stacking Cabinet with Glass



Item Code	Outer Dimensions				
	W	H	D	P	B
CWS2415	24	15	12	•	-
CWS2715	27	15	12	•	-

\*Door comes pre-routed with glass insert and finished interior

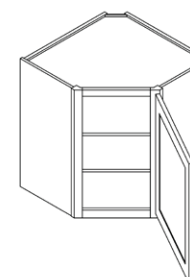
## 30" - 36" High Single Door Wall



Item Code	Outer Dimensions				
	W	H	D	P	B
W930	9	30	12	•	•
W1230	12	30	12	•	•
W1530	15	30	12	•	•
W1830	18	30	12	•	•
W2130	21	30	12	•	•
W936	9	36	12	•	•
W1236	12	36	12	•	•
W1536	15	36	12	•	•
W1836	18	36	12	•	•
W2136	21	36	12	•	•

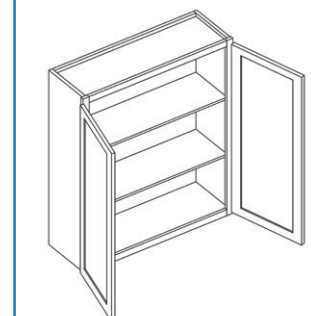
\*Premier line drawing shown.  
Builder is a partial overlay.

## Corner Wall Cabinet



Item Code	Outer Dimensions				
	W	H	D	P	B
CW2430	24	30	12	•	•
CW2436	24	36	12	•	•
CW2442	24	42	12	•	•
CW2736	27	36	12	•	•
CW2742	27	42	12	•	•

## 30" - 36" High Double Door Wall

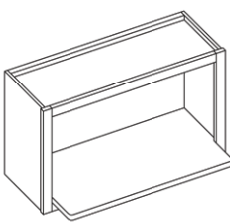


Item Code	Outer Dimensions				
	W	H	D	P	B
W2430-2	39	18	12	•	•
W2730	39	24	12	•	•
W2430-2	24	30	12	•	•
W2730	27	30	12	•	•
W3030	30	30	12	•	•
W3330	33	30	12	•	•
W3630	36	30	12	•	•
W3930	39	30	12	•	•
W2436-2	24	36	12	•	•
W2736	27	36	12	•	•
W3036	30	36	12	•	•
W3336	33	36	12	•	•
W3636	36	36	12	•	•
W3936	39	36	12	•	•

\*Premier line drawing shown.  
Builder is a partial overlay.



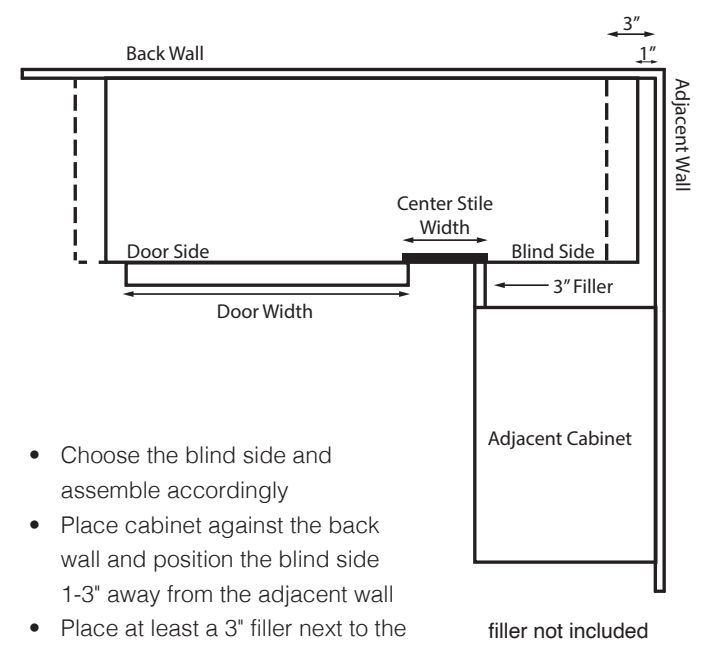
### 30" Microwave Wall Cabinet



Item Code	Outer Dimensions				
	W	H	D	P	B
MWC3018	30	18	12	•	-

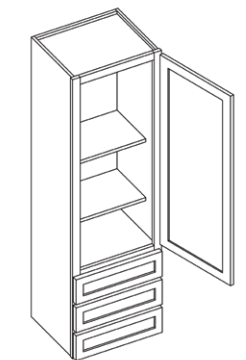
## Installing a Blind Wall Cabinet

Proper installation ensures that the doors will open and show correct reveal



- Choose the blind side and assemble accordingly
- Place cabinet against the back wall and position the blind side 1-3" away from the adjacent wall
- Place at least a 3" filler next to the adjacent cabinet

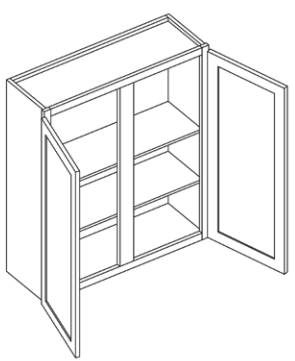
## Wall Tower with 3 Drawers



Item Code	Outer Dimensions				
	W	H	D	P	B
DWR1548	15	48	15	•	-
DWR1554	15	54	15	•	-
DWR1560	15	60	15	•	-

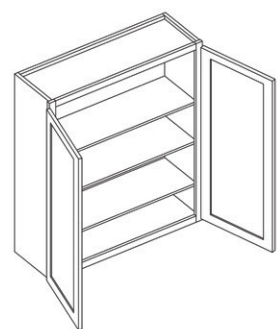
\*Works great with a vanity

## 30" - 36" High Double Door with Center Stile



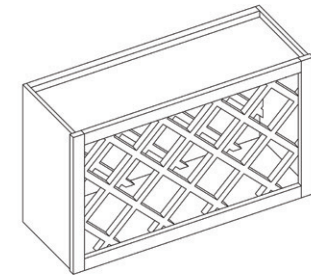
Item Code	Outer Dimensions				
	W	H	D	P	B
W4230	42	30	12	•	•
W4236	42	36	12	•	•

## 42" High Double Door Wall



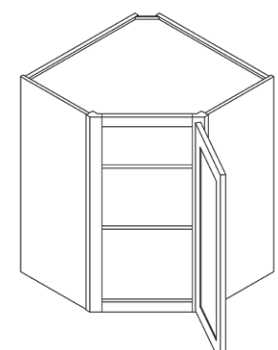
Item Code	Outer Dimensions				
	W	H	D	P	B
W2442-2	24	42	12	•	•
W2742	27	42	12	•	•
W3042	30	42	12	•	•
W3342	33	42	12	•	•
W3642	36	42	12	•	•
W3942	39	42	12	•	•

## Wine Rack



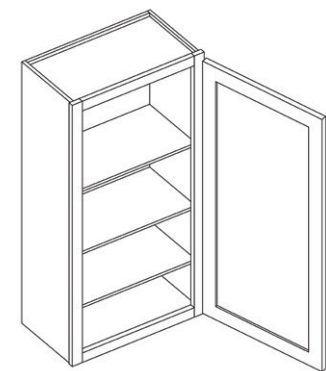
Item Code	Outer Dimensions				
	W	H	D	P	B
WR3018	30	18	12	•	•

## 30" - 36" High Corner Wall



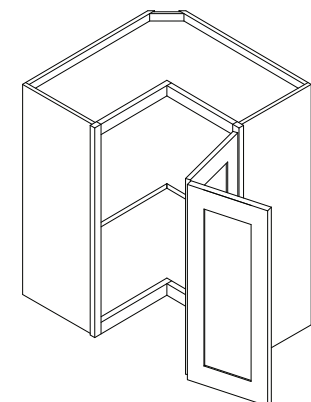
Item Code	Outer Dimensions				
	W	H	D	P	B
CW2430	24	30	12	•	•
CW2436	24	36	12	•	•
CW2736	27	36	15	•	•

## 42" High Single Door Wall



Item Code	Outer Dimensions				
	W	H	D	P	B
W942	9	42	12	•	•
W1242	12	42	12	•	•
W1542	15	42	12	•	•
W1842	18	42	12	•	•
W2142	21	42	12	•	•

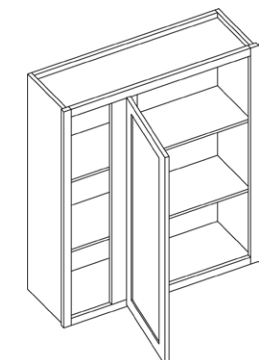
## Wall Easy Reach



Item Code	Outer Dimensions				
	W	H	D	P	B
WER2430	24	30	12	•	•
WER2436	24	36	12	•	•
WER2442	24	42	12	•	•

\*Image shown is hinge left

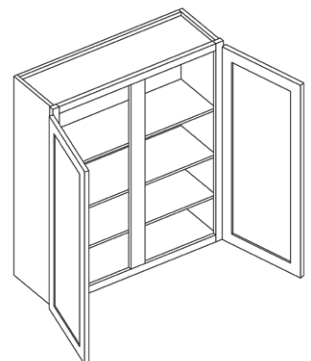
## 30" - 36" High Blind Wall



Item Code	Outer Dimensions				
	W	H	D	P	B
BW2430	24	30	12	•	-
BW3030	30	30	12	•	•
BW3630	36	30	12	•	-
BW3036	30	36	12	•	•
BW3636	36	36	12	•	•

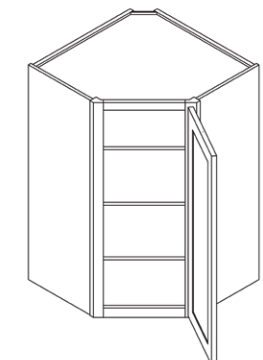
\*Image shown is hinge left

## 42" High Double Door Wall with Center Stile



Item Code	Outer Dimensions				
	W	H	D	P	B
W4242	42	42	12	•	•

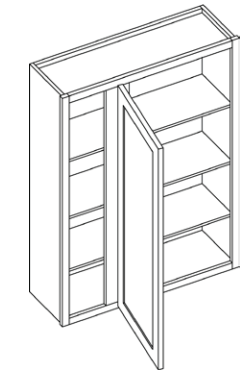
## 42" High Corner Wall



Item Code	Outer Dimensions				
	W	H	D	P	B
CW2442	24	42	12	•	•
CW2742	27	42	15	•	•



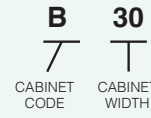
## 42" High Blind Wall



Item Code	Outer Dimensions				
	W	H	D	P	B
BW3042	30	42	12	•	-
BW3642	36	42	12	•	•

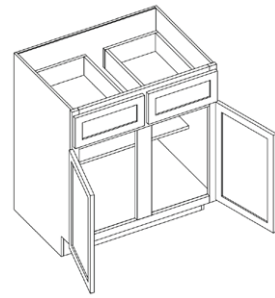
\*Image shown is hinge left

Base Cabinet Coding



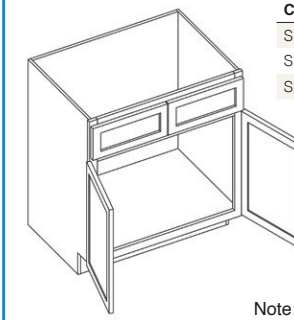
- Notes:
- Standard base cabinets are 24" deep and 34.5" high.
  - Add door thickness for total cabinet depth.
  - Please refer to the Products by Cabinet Line chart to determine which products are carried for each cabinet line.
  - Napa White has a single drawer on all sizes.

Double Door Standard Base with Center Stile



Item Code	Outer Dimensions				
	W	H	D	P	B
B42	42	34.5	24	•	•

Sink Base

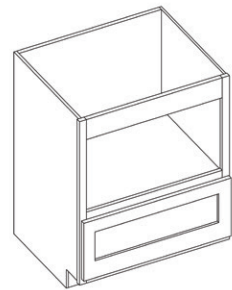


Item Code	Outer Dimensions				
	W	H	D	P	B
SB30	30	34.5	24	•	•
SB33	33	34.5	24	•	•
SB36	36	34.5	24	•	•

Note: Builder has slab front drawers



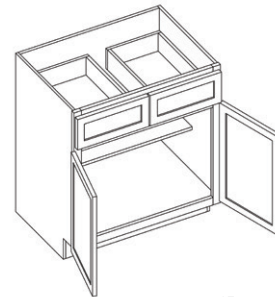
Microwave Base Cabinet



Item Code	Outer Dimensions				
	W	H	D	P	B
MBC30	30	34.5	24	•	-

\*Finished interior

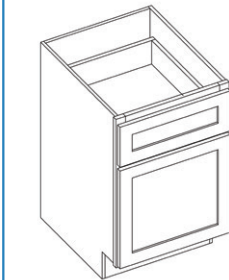
Double Door Standard Base



Item Code	Outer Dimensions				
	W	H	D	P	B
B24-2*	24	34.5	24	•	•
B27	27	34.5	24	•	•
B30	30	34.5	24	•	•
B33	33	34.5	24	•	•
B36	36	34.5	24	•	•
B39	39	34.5	24	•	•

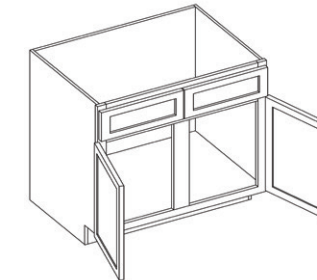
\*B24-2 has one drawer and two doors  
\*Napa White has a single drawer front on all sizes.  
Note: Builder has slab front drawers

Desk Drawer Base



Item Code	Outer Dimensions				
	W	H	D	P	B
DDB18	18	29.5	24	•	-

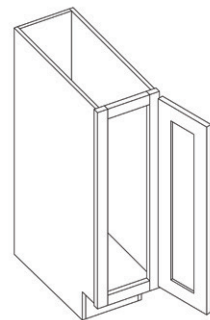
Sink Base with Center Stile



Item Code	Outer Dimensions				
	W	H	D	P	B
SB42	42	34.5	24	•	•
SB48	48	34.5	24	•	-

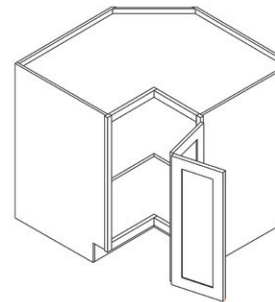
Note: Builder has slab front drawers

Single Door Full Height Base



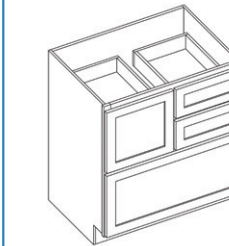
Item Code	Outer Dimensions				
	W	H	D	P	B
B09	9	34.5	24	•	•

Easy Reach



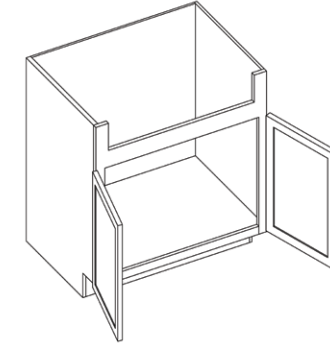
Item Code	Outer Dimensions				
	W	H	D	P	B
ER33	33	34.5	24	•	-
ER36	36	34.5	24	•	•

Cooking Center



Item Code	Outer Dimensions				
	W	H	D	P	B
CC30	30	34.5	24	•	-

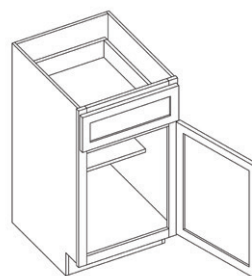
36" Farm Sink Base



Item Code	Outer Dimensions				
	W	H	D	P	B
FSB36	36	34.5	24	•	-

\*Height of sink inset is 13.5"

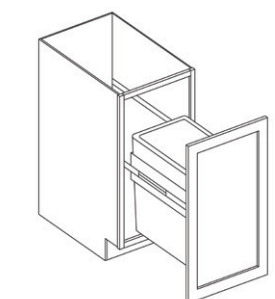
Single Door Standard Base



Item Code	Outer Dimensions				
	W	H	D	P	B
B12	12	34.5	24	•	•
B15	15	34.5	24	•	•
B18	18	34.5	24	•	•
B21	21	34.5	24	•	•

Note: Builder has slab front drawers

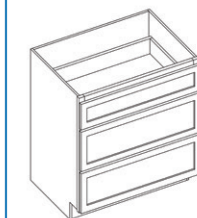
Trash Can Base (Full Height)



Item Code	Outer Dimensions				
	W	H	D	P	B
TRB-1*	18	34.5	24	•	-
TRB-2**	18	34.5	24	•	-

\*Includes one 50 QT can  
\*\*Includes two 35 QT cans

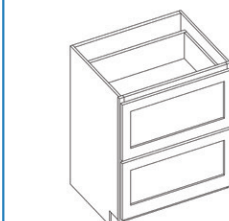
Drawer Base



Item Code	Outer Dimensions				
	W	H	D	P	B
DB12-3	12	34.5	24	•	•
DB15-3	15	34.5	24	•	•
DB18-3	18	34.5	24	•	•
DB21-3	21	34.5	24	•	•
DB24-3	24	34.5	24	•	•
DB27-3	27	34.5	24	•	-
DB30-3	30	34.5	24	•	•
DB33-3	33	34.5	24	•	-
DB36-3	36	34.5	24	•	-

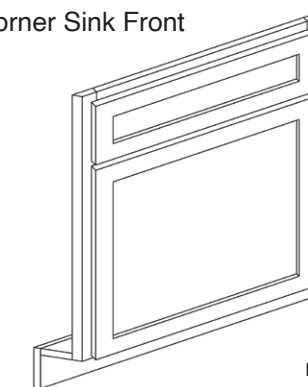
Note: Builder has slab front drawers

Drawer Base - 2 Drawer



Item Code	Outer Dimensions				
	W	H	D	P	B
DB30-2	30	34.5	24	•	-
DB36-2	36	34.5	24	•	-

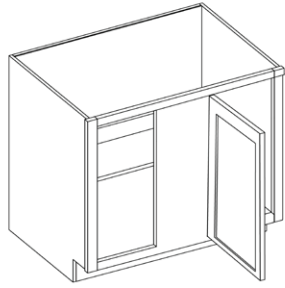
Corner Sink Front



Item Code	Outer Dimensions				
	W	H	D	P	B
CSF42	27	34.5	2	•	•
CSF-FLOOR*	48	0.5	48	•	•

\*Sink floor not pictured and sold separately  
\*Back of face frame measures 27" wide  
NOTE: Hinges not included, to use as a workable door corner hinges are recommended.  
Builder comes with slab false drawer

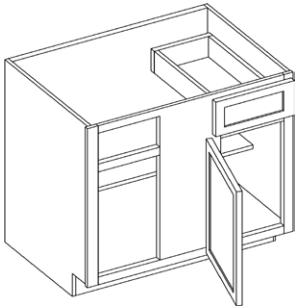
36" Blind Base



Item Code	Outer Dimensions				
	W	H	D	P	B
BB36	30	34.5	24	•	•

\*Image shown is hinge left

42" - 48" Blind Base

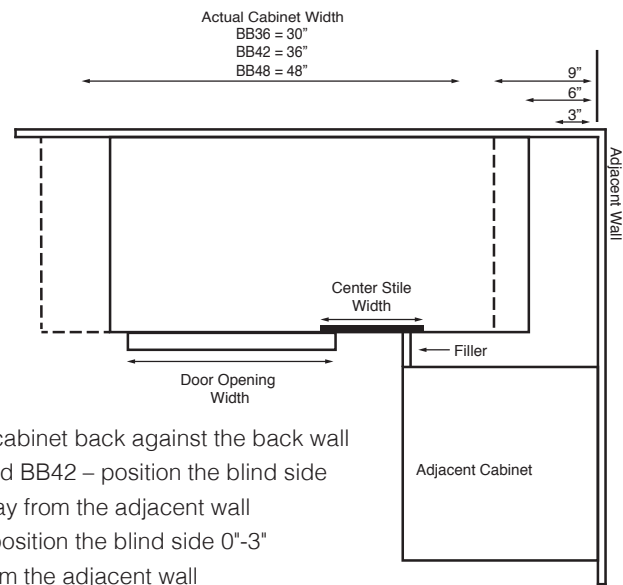


Item Code	Outer Dimensions				
	W	H	D	P	B
BB42	36	34.5	24	•	•
BB48	48	34.5	24	•	•

\*Image shown is hinge left  
Note: Builder has slab front drawers

Installing a Blind Base Cabinet

Proper installation ensures that the drawer will clear hardware, and doors will open, and show correct reveal

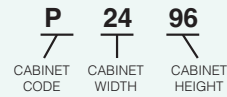


- Place the cabinet back against the back wall
  - BB36 and BB42 – position the blind side 6"-9" away from the adjacent wall
  - BB48 - position the blind side 0"-3" away from the adjacent wall
- Place at least a 3" filler next to adjacent cabinet

\*Filler not included

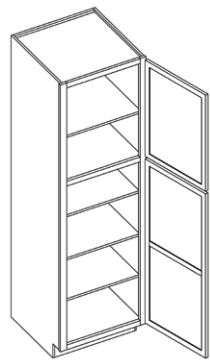


Tall Cabinet Coding



- Notes:
- Standard tall cabinets are 24" deep.
  - Add door thickness for total cabinet depth.
  - Please refer to the Products by Cabinet Line chart to determine which products are carried for each cabinet line.

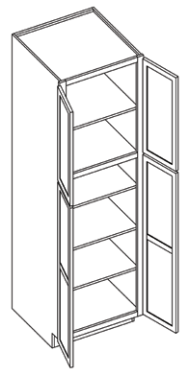
Single Door Pantry



Item Code	Outer Dimensions				
	W	H	D	P	B
P1884*	18	84	24	•	•
P1890*	18	90	24	•	•
P1896**	18	96	24	•	•

\*Includes four shelves  
\*\*Includes five shelves

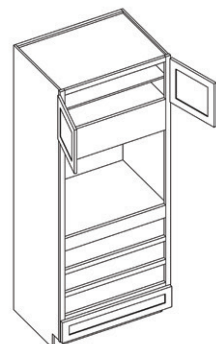
24" and 30" Double Door Pantry



Item Code	Outer Dimensions				
	W	H	D	P	B
P2484*	24	84	24	•	-
P2490*	24	90	24	•	-
P2496**	24	96	24	•	-
P3090*	30	90	24	•	-
P3096**	30	96	24	•	-

\*Includes four shelves  
\*\*Includes five shelves

Oven Cabinet (Includes One Drawer)

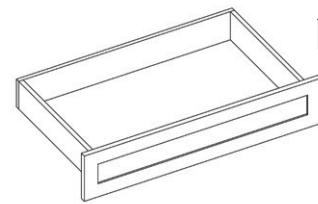


Item Code	Outer Dimensions				
	W	H	D	P	B
OC3390	33	90	24	•	•
OC3396	33	96	24	•	•

\*Includes one drawer  
\*Finished interior



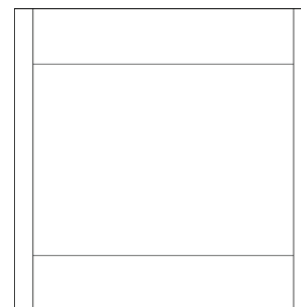
Oven Cabinet Drawer



Item Code	Outer Dimensions				
	W	H	D	P	B
OCD337	32.5	6.75	24	•	•

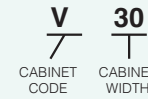
Note: Builder has slab front drawers

Oven Cabinet Overlay Panel



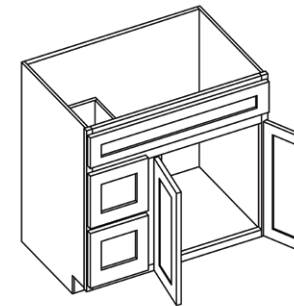
Item Code	Outer Dimensions				
	W	H	D	P	B
OP3353	32.5	53	0.75	•	•

Vanity Cabinet Coding



- Notes:
- Standard vanity cabinets are 21" deep.
  - Add door thickness for total cabinet depth.
  - Please refer to the Products by Cabinet Line chart to determine which products are carried for each cabinet line.
  - Napa White has a single drawer on all sizes.

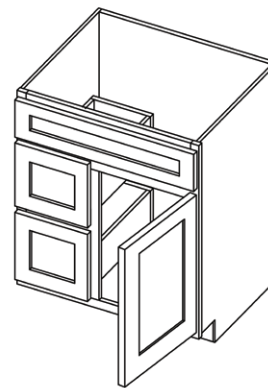
Vanity Combo Cabinet 36"



Item Code	Outer Dimensions				
	W	H	D	P	B
VSBDR36	36	34.5	21	•	-
VSBDL36	36	34.5	21	•	-

\*Pictured is the VSBDL36

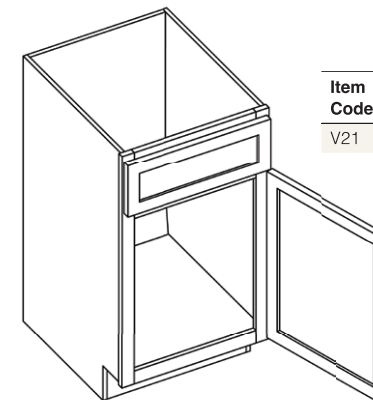
Vanity Combo Cabinet 30"



Item Code	Outer Dimensions				
	W	H	D	P	B
VSBDR30	30	34.5	21	•	-
VSBDL30	30	34.5	21	•	-

\*Pictured is the VSBDL30

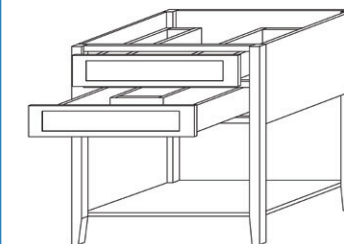
Single Door Vanity



Item Code	Outer Dimensions				
	W	H	D	P	B
V21	21	34.5	21	•	-



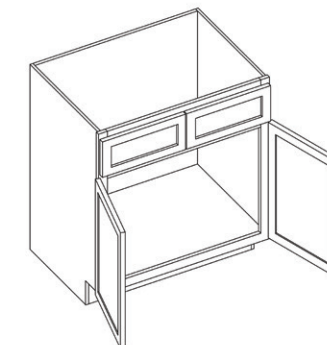
36" Open Shelf Vanity Sink Base



Item Code	Outer Dimensions				
	W	H	D	P	B
VSBOS36	36	34.5	21	•	-

\*Includes adjustable feet  
\*Total height does not account for adjustable foot height

Double Door Vanity



Item Code	Outer Dimensions				
	W	H	D	P	B
V24-2"	24	34.5	21	•	•
V27	27	34.5	21	•	•
V30	30	34.5	21	•	•
V33	33	34.5	21	•	•
V36	36	34.5	21	•	•

\*Has a single drawer front.  
Note: Napa White has a single drawer front on all sizes.  
Note: Builder has slab front drawers

Vanity Drawer Base

Item Code	Outer Dimensions				
	W	H	D	P	B
VDB12	12	34.5	21	●	●
VDB15	15	34.5	21	●	●
VDB18	18	34.5	21	●	●
VDB21	21	34.5	21	-	●
VDB24	24	34.5	21	●	●

Note: Builder has slab front drawers

Vanity Sink Base

Item Code	Outer Dimensions				
	W	H	D	P	B
VSB36	36	34.5	21	●	●
VSB42	42	34.5	21	●	●
VSB48	48	34.5	21	●	●

Note: Builder has slab front drawers

Single Door Vanity Base

Item Code	Outer Dimensions				
	W	H	D	P	B
VB12	12	34.5	21	●	-
VB15	15	34.5	21	●	●
VB18	18	34.5	21	●	●

Note: Builder has slab front drawers

24" Vanity Drawer

Item Code	Outer Dimensions				
	W	H	D	P	B
KD24	23.5	4.75	21	●	-

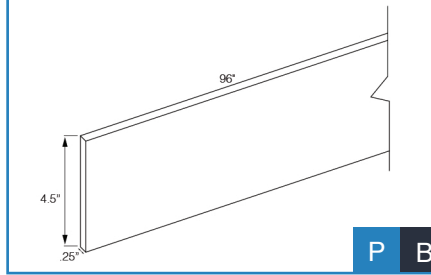
\*Drawer box height is 2"  
NOTE: All drawer fronts will have a slab profile.

36" Vanity Drawer

Item Code	Outer Dimensions				
	W	H	D	P	B
KD36	29.5	4.75	21	●	-

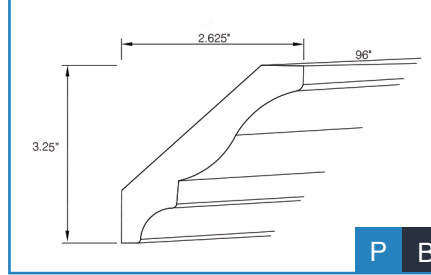
\*Drawer box height is 2"  
\* Sides Trimmable to 30"  
NOTE: All drawer fronts will have a slab profile.

Toe Kick - TKS8



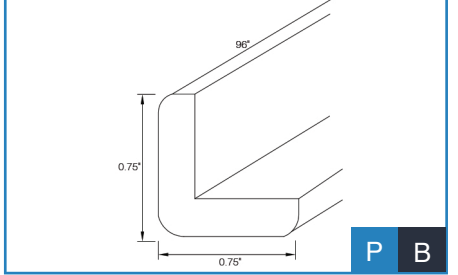
P B

Large Crown Molding - BCM8



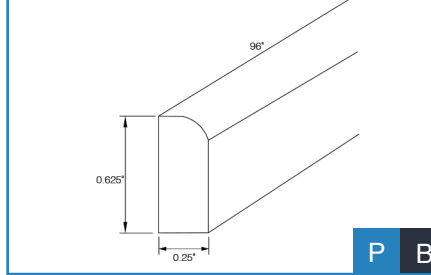
P B

Outside Corner Molding - OCM8



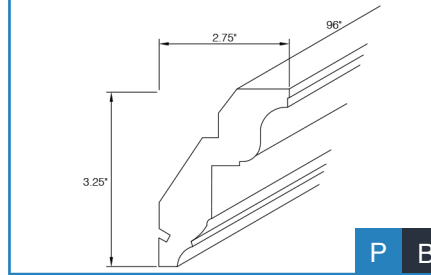
P B

Scribe - SCRIBE



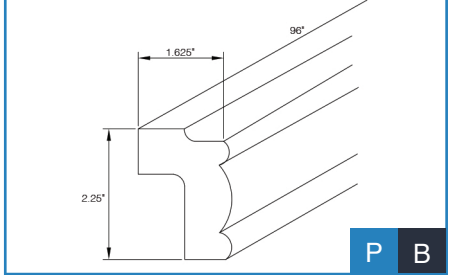
P B

Royal Crown Molding - RCM8



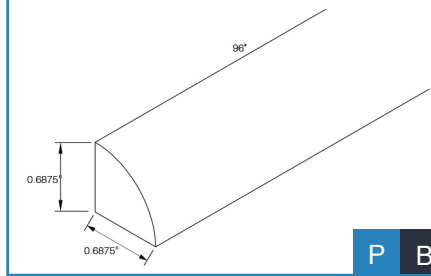
P B

Traditional Light Rail Molding - LRM8



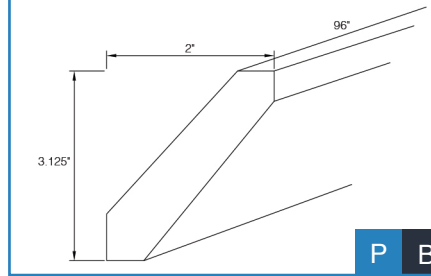
P B

Shoe - SHOE



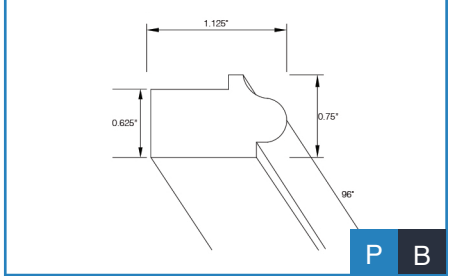
P B

Shaker Crown Molding - SCM8



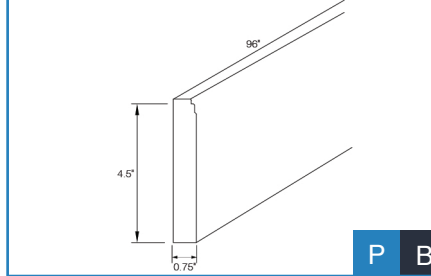
P B

Bottom Edge Molding - BEM8



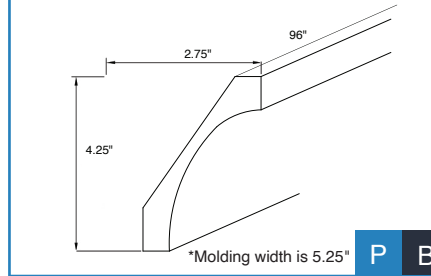
P B

Furniture Base Molding - FBM8



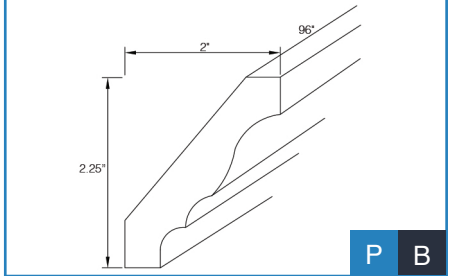
P B

Cove Crown Molding - COM8



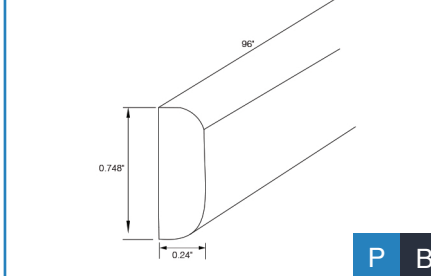
\*Molding width is 5.25" P B

Traditional Crown Molding - CM8



P B

Batten Molding - BAM8



P B





**1/2" Thick Finished Plywood Panel** P B

Item Code	Outer Dimensions		
	W	H	D
PSP4896	96	48	0.5

\*Finished one side, natural UV back

**Corbel - Basic Medium** P B

Item Code	Outer Dimensions		
	W	H	D
CORSM	3	10.5	7.5

**Corbel - Transitional** P B

Item Code	Outer Dimensions		
	W	H	D
CORT	3.5	10.5	7

**Turned Post** P B

Item Code	Outer Dimensions		
	W	H	D
TPOSTP3	3	35.5	3
TPOSTP5	5	35.5	5

**Back Panel - Long Grain Plywood** P B

Item Code	Outer Dimensions		
	W	H	D
BPLG4896	48	96	0.25

\*Finished one side, raw back

**Bead Board** P B

Item Code	Outer Dimensions		
	W	H	D
BBP4842	48	42	0.25

\*Finished one side, raw back

**Bunfoot - Transitional** P B

Item Code	Outer Dimensions		
	H	Top	Bottom
TBUNFOOT2	4.5	3.5	2

**Bunfoot** P B

Item Code	Outer Dimensions		
	W	H	D
TBUNFOOT	3	4.5	3

**Decorative Base/Wall Panels** P

Item Code	Outer Dimensions		
	W	H	D
DWP1215	11.5	13.75	0.75
DWP2415	23.5	13.75	0.75
DWP1230	11.5	28.75	0.75
DWP2430	23.5	28.75	0.75
DWP1236	11.5	34.75	0.75
DWP1242	11.5	40.75	0.75

**Filler** P B

Item Code	Outer Dimensions		
	W	H	D
F396	3	96	0.75
F696	6	96	0.75

\*All four edges finished

**Overlay Filler** P B

Item Code	Outer Dimensions		
	W	H	D
OLF330	2.5	28.75	0.75
OLF336	2.5	34.75	0.75
OLF342	2.5	40.75	0.75
OLF630	5.5	28.75	0.75

\*All four edges finished  
NOTE: Sizes do not measure true.

**Fluted Filler** P B

Item Code	Outer Dimensions		
	W	H	D
FF396	3	96	0.75

\*All four edges finished

**Dishwasher End Panel** P B

Item Code	Outer Dimensions		
	W	H	D
DWR3	3	34.5	24

\*0.5" panel thickness  
\*Finished one side, natural UV back

**Tall End Panel** P B

Item Code	Outer Dimensions		
	W	H	D
TEP3096	1.5	96	30

\*0.5" panel thickness  
\*Finished one side, natural UV back

**Bookcase End** P B

Item Code	Outer Dimensions		
	W	H	D
BCE1596	1.5	96	15

\*Requires shelf  
\*Shelf clips available  
\*0.5" panel thickness

**Shelf** P B

Item Code	Outer Dimensions		
	W	H	D
**SHELF1296	96	0.625	12
***SHELF2496	96	0.625	24

\*3/4" plywood construction  
\*\*Available in natural or painted  
\*\*\*Available in natural only

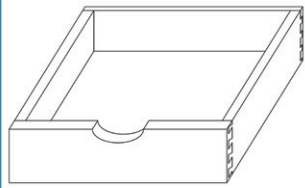
**Furniture Valance** P

Item Code	Outer Dimensions		
	W	H	D
VFUNR37	37	4.5	0.75





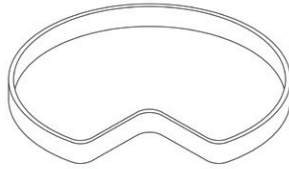
Soft Close Roll Out Tray



Item Code	Outer Dimensions				
	W	H	D	P	B
ROT15-SC	10.125	4	21	•	•
ROT18-SC	13.125	4	21	•	•
ROT21-SC	16.125	4	21	•	•
ROT24-SC	19.125	4	21	•	•
ROT27-SC	22.125	4	21	•	•
ROT30-SC	25.125	4	21	•	•
ROT33-SC	28.125	4	21	•	•
ROT36-SC	31.125	4	21	•	•

\*Includes two trays & four tracks

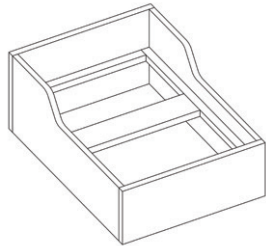
Lazy Susan Kit



Item Code	Outer Dimensions				
	W	H	D	P	B
LSK	29	1.5	29	•	•

\*Includes two trays for shelf mounting  
\*Birch plywood construction

Trash Can Insert for B18



Item Code	Outer Dimensions				
	W	H	D	P	B
TCCK*	14.625	4.125	19.75	•	•

• Dovetail, solid wood construction  
• Undermount, full extension, soft close slides \*Includes two 35 QT cans

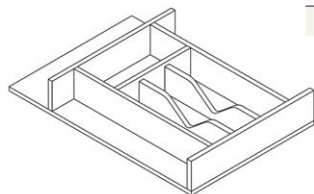
Spice Rack Insert



Item Code	Outer Dimensions				
	W	H	D	P	B
SRI9-SC	5.75	24	20.5	•	•

\*Fits in the B09

Cutlery Drawer Insert

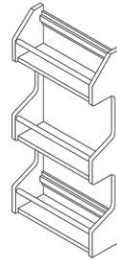


Item Code	Outer Dimensions				
	W	H	D	P	B
CDI14	13.375	2.87	19.75	•	•
CDI20	19.75	2.87	19.75	•	•

Roll Out Tray Usage Guide

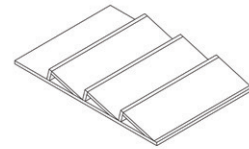
Item Code	Designed to Fit
ROT15-SC	B15
ROT18-SC	B18, P1884, P1890, P1896
ROT21-SC	B21
ROT24-SC	B24, P2484, P2490, P2496
ROT27-SC	B27
ROT30-SC	B30, SB30, P3090, P3096
ROT33-SC	B33, SB33
ROT36-SC	B36, SB36

Spice Rack Door Attachment



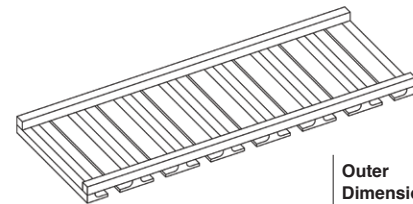
Item Code	Outer Dimensions				
	W	H	D	P	B
SRD12	11.5	24	4	•	•
SRD15	14.5	24	4	•	•

Spice Tray Insert



Item Code	Outer Dimensions				
	W	H	D	P	B
STI14	13.375	1.094	19.75	•	•
STI20	19.75	1.094	19.75	•	•

Stemware Rack



Item Code	Outer Dimensions				
	W	H	D	P	B
SWR3012	28.5	1.5	10.5	•	•



\*Accessories displayed on this page can be installed on assembled orders




















PERFECT  
  
 PAIRINGS



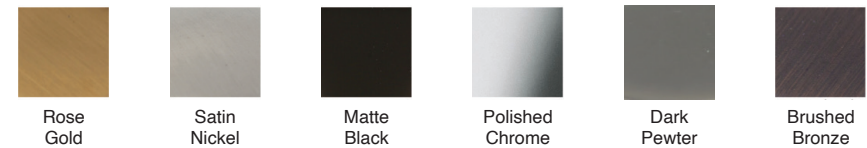
Discover The  
 Perfect Pairing  
 Over 200+ Options



Introducing a Decorative Hardware Collection, designed to provide the perfect complement to our cabinet door styles. The expansive assortment of possibilities will make it easy to find the perfect pair.

<p>Bar Pull  <small>Shown In Satin Nickel</small></p> 	<p>Bar Pull Knob  <small>Shown In Rubbed Oil Bronze</small></p> 	<p>Charleston Cup Pull  <small>Shown In Matte Black</small></p> 	<p>Charlotte Pull  <small>Shown In Rubbed Oil Bronze</small></p> 
<p>Charlotte Square Knob  <small>Shown In Rose Gold</small></p> 	<p>Colorado Knob  <small>Shown In Polished Chrome</small></p> 	<p>Colorado Square Knob  <small>Shown In Satin Nickel</small></p> 	<p>Colorado Pull  <small>Shown In Matte Black</small></p> 
<p>Diecast Knob  <small>Shown In Dark Pewter</small></p> 	<p>Madison Pull  <small>Shown In Rubbed Oil Bronze</small></p> 	<p>Manhattan Pull  <small>Shown In Rose Gold</small></p> 	<p>Miami Pull  <small>Shown In Dark Pewter</small></p> 
<p>Milan Pull  <small>Shown In Satin Nickel</small></p> 	<p>Modern Square Pull  <small>Shown In Matte Black</small></p> 	<p>Round Flat Top Knob  <small>Shown In Dark Pewter</small></p> 	<p>Rectangular Knob  <small>Shown In Polished Chrome</small></p> 
<p>Square Knob – Flat  <small>Shown In Rose Gold</small></p> 	<p>Square Knob  <small>Shown In Matte Black</small></p> 	<p>Vail Pull  <small>Shown In Polished Chrome</small></p> 	

Available Finishes

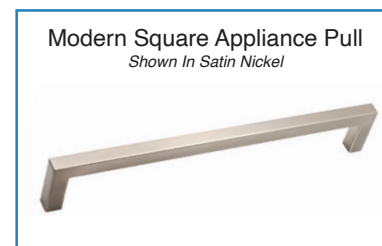
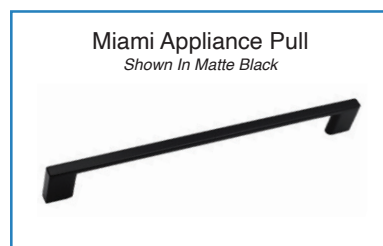




## Appliance Pulls



Decorative Appliance Collection is designed to provide the perfect complement to our cabinet door hardware.



It's smart to match your hardware finish throughout the kitchen. This choice creates a coordinated look even when your knobs and handles are different.

### Available Finishes





# Floating Shelves



Decorative Hardware Collection offers Floating Shelves for accents to add beauty and function to your kitchen or bathroom.

Choose from three finishes and five different size options with our Floating Shelves. Create the clutter free look giving you the perfect balance of spontaneity and class.

## Available Finishes



White Oak Walnut Maple

## Available Widths

12", 24", 30", 36", 42"

## Brackets



Brackets (2/pkg) included with all floating shelves.



White Oak



Walnut



Maple

White Oak and Walnut are pre-finished and have a clear coat + 20 sheen. Maple shelves are unfinished.

Item Code	Item Description	Shaker	Brooklyn	Napa	Essential
		Premier			Builder
<b>Wall Cabinets</b>					
W3012	Double Door Wall Cabinet - 30" W x 12" H	●	●	●	●
W3312	Double Door Wall Cabinet - 33" W x 12" H	●	●	-	-
W3612	Double Door Wall Cabinet - 36" W x 12" H	●	●	●	●
CWS2415	15" Corner Wall Stacking Cabinets	●	●	●	-
CWS2715	15" Corner Wall Stacking Cabinets	●	●	●	-
W3015	Double Door Wall Cabinet - 30" W x 15" H	●	●	●	-
W3315	Double Door Wall Cabinet - 33" W x 15" H	●	●	●	-
W3615	Double Door Wall Cabinet - 36" W x 15" H	●	●	●	-
WS1215	15" Wall Stacking Cabinets with Glass	●	●	●	-
WS1515	15" Wall Stacking Cabinets with Glass	●	●	●	-
WS1815	15" Wall Stacking Cabinets with Glass	●	●	●	-
WS2115	15" Wall Stacking Cabinets with Glass	●	●	●	-
WS2415-2	15" Wall Stacking Cabinets with Glass	●	●	●	-
WS2715-2	15" Wall Stacking Cabinets with Glass	●	●	●	-
WS3015-2	15" Wall Stacking Cabinets with Glass	●	●	●	-
WS3315-2	15" Wall Stacking Cabinets with Glass	●	●	●	-
WS3615-2	15" Wall Stacking Cabinets with Glass	●	●	●	-
W3018	Double Door Wall Cabinet - 30" W x 18" H	●	●	●	●
W3318	Double Door Wall Cabinet - 33" W x 18" H	●	●	●	-
W3618	Double Door Wall Cabinet - 36" W x 18" H	●	●	●	●
W3021	Double Door Wall Cabinet - 30" W x 21" H	●	●	●	-
W3024	Double Door Wall Cabinet - 30" W x 24" H	●	●	●	●
W3324	Double Door Wall Cabinet - 33" W x 24" H	●	●	●	-
W3624	Double Door Wall Cabinet - 36" W x 24" H	●	●	●	●
W331824	Deep Wall Cabinet - 33" W x 18" H x 24" D	●	●	●	-
W361824	Deep Wall Cabinet - 36" W x 18" H x 24" D	●	●	●	●
W332424	Deep Wall Cabinet - 33" W x 24" H x 24" D	●	●	●	-
W362424	Deep Wall Cabinet - 36" W x 24" H x 24" D	●	●	●	●
W930	Single Door Wall Cabinet - 9" W x 30" H	●	●	●	●
W1230	Single Door Wall Cabinet - 12" W x 30" H	●	●	●	●
W1530	Single Door Wall Cabinet - 15" W x 30" H	●	●	●	●
W1830	Single Door Wall Cabinet - 18" W x 30" H	●	●	●	●
W2130	Single Door Wall Cabinet - 21" W x 30" H	●	●	●	●
W2430-2	Double Door Wall Cabinet - 24" W x 30" H	●	●	●	●
W2730	Double Door Wall Cabinet - 27" W x 30" H	●	●	●	●
W3030	Double Door Wall Cabinet - 30" W x 30" H	●	●	●	●
W3330	Double Door Wall Cabinet - 33" W x 30" H	●	●	●	●
W3630	Double Door Wall Cabinet - 36" W x 30" H	●	●	●	●
W3930	Double Door Wall Cabinet - 39" W x 30" H	●	●	●	●
W4230	Double Door Wall Cabinet - 42" W x 30" H	●	●	●	●
BW2430	Blind Wall Cabinet - 24" W x 30" H	●	●	●	-
BW3030	Blind Wall Cabinet - 30" W x 30" H	●	●	●	●
BW3630	Blind Wall Cabinet - 36" W x 30" H	●	●	●	●
CW2430	Corner Wall Cabinet - 24" W x 30" H	●	●	●	●
W936	Single Door Wall Cabinet - 9" W x 36" H	●	●	●	●
W1236	Single Door Wall Cabinet - 12" W x 36" H	●	●	●	●
W1536	Single Door Wall Cabinet - 15" W x 36" H	●	●	●	●
W1836	Single Door Wall Cabinet - 18" W x 36" H	●	●	●	●
W2136	Single Door Wall Cabinet - 21" W x 36" H	●	●	●	●
W2436-2	Double Door Wall Cabinet - 24" W x 36" H	●	●	●	●
W2736	Double Door Wall Cabinet - 27" W x 36" H	●	●	●	●

Item Code	Item Description	Shaker	Brooklyn	Napa	Essential
		Premier			Builder
<b>Wall Cabinets</b>					
W3036	Double Door Wall Cabinet - 30" W x 36" H	●	●	●	●
W3336	Double Door Wall Cabinet - 33" W x 36" H	●	●	●	●
W3636	Double Door Wall Cabinet - 36" W x 36" H	●	●	●	●
W3936	Double Door Wall Cabinet - 39" W x 36" H	●	●	●	●
W4236	Double Door Wall Cabinet - 42" W x 36" H	●	●	●	●
BW3036	Blind Wall Cabinet - 30" W x 36" H	●	●	●	-
BW3636	Blind Wall Cabinet - 36" W x 36" H	●	●	●	●
CW2436	Corner Wall Cabinet - 24" W x 36" H	●	●	●	●
CW2736	Corner Wall Cabinet - 27" W x 36" H	●	●	●	●
W942	Single Door Wall Cabinet - 9" W x 42" H	●	●	●	●
W1242	Single Door Wall Cabinet - 12" W x 42" H	●	●	●	●
W1542	Single Door Wall Cabinet - 15" W x 42" H	●	●	●	●
W1842	Single Door Wall Cabinet - 18" W x 42" H	●	●	●	●
W2142	Single Door Wall Cabinet - 21" W x 42" H	●	●	●	●
W2442-2	Double Door Wall Cabinet - 24" W x 42" H	●	●	●	●
W2742	Double Door Wall Cabinet - 27" W x 42" H	●	●	●	●
W3042	Double Door Wall Cabinet - 30" W x 42" H	●	●	●	●
W3342	Double Door Wall Cabinet - 33" W x 42" H	●	●	●	●
W3642	Double Door Wall Cabinet - 36" W x 42" H	●	●	●	●
W3942	Double Door Wall Cabinet - 39" W x 42" H	●	●	●	●
W4242	Double Door Wall Cabinet - 42" W x 42" H	●	●	●	●
BW3042	Blind Wall Cabinet - 30" W x 42" H	●	●	●	-
BW3642	Blind Wall Cabinet - 36" W x 42" H	●	●	●	●
CW2442	Corner Wall Cabinet - 24" W x 42" H	●	●	●	●
CW2742	Corner Wall Cabinet - 27" W x 42" H	●	●	●	●
DWR1548	Wall Twr w/ 3 Drws - 15" W x 48" H x 15" D	●+	●	●	-
DWR1554	Wall Twr w/ 3 Drws - 15" W x 54" H x 15" D	●+	●	●	-
DWR1560	Wall Twr w/ 3 Drws - 15" W x 60" H x 15" D	●+	●	●	-
MWC3018	Microwave Wall Cabinet - 30" W x 18" H x 12" D	●	●	●	-
WR3018	Wine Rack - 30" W x 18" H x 12" D	●	●	●	●
<b>Base Cabinets</b>					
B09	Single Door Full Height Base Cabinet - 9" W	●	●	●	●
B12	Single Door Standard Base Cabinet - 12" W	●+	●	●	●
B15	Single Door Standard Base Cabinet - 15" W	●+	●	●	●
B18	Single Door Standard Base Cabinet - 18" W	●+	●	●	●
B21	Single Door Standard Base Cabinet - 21" W	●+	●	●	●
B24-2	Double Door Standard Base Cabinet - 24" W	●+	●	●	●
B27	Double Door Standard Base Cabinet - 27" W	●+	●	●	●
B30	Double Door Standard Base Cabinet - 30" W	●+	●	●	●
B33	Double Door Standard Base Cabinet - 33" W	●+	●	●	●
B36	Double Door Standard Base Cabinet - 36" W	●+	●	●	●
B39	Double Door Standard Base Cabinet - 39" W	●+	●	●	●
B42	Double Door Standard Base Cabinet - 42" W	●+	●	●	●

\*All Shaker Designer White drawers are available with either a slab drawer front or 5-Piece drawer front. All 5-Piece SKUs are notated with '5PC' on the Order Form

Item Code	Item Description	Shaker	Brooklyn	Napa	Essential
		Premier	Builder		
<b>Base Cabinets</b>					
DB12-3	Drawer Base Cabinet - 12" W	•+	•	•	•
DB15-3	Drawer Base Cabinet - 15" W	•+	•	•	•
DB18-3	Drawer Base Cabinet - 18" W	•+	•	•	•
DB21-3	Drawer Base Cabinet - 21" W	•+	•	•	•
DB24-3	Drawer Base Cabinet - 24" W	•+	•	•	•
DB27-3	Drawer Base Cabinet - 27" W	•+	•	-	-
DB30-3	Drawer Base Cabinet - 30" W	•+	•	•	•
DB33-3	Drawer Base Cabinet - 33" W	•+	•	-	-
DB36-3	Drawer Base Cabinet - 36" W	•+	•	•	-
DB30-2	2 Drawer Base Cabinet - 30" W	•+	•	•	-
DB36-2	2 Drawer Base Cabinet - 36" W	•+	•	-	-
CC30	Cooking Center Base Cabinet - 30" W	•+	•	•	-
FSB36	Farm Sink Base Cabinet - 36" W	•+	•	•	-
TRB-1	Trash Can Base w/ Full Ht Door -18" W	•+	•	•	-
TRB-2	Trash Can Base w/ Full Ht Door -18" W	•+	•	•	-
SB30	Sink Base Cabinet - 30" W	•+	•	•	•
SB33	Sink Base Cabinet - 33" W	•+	•	•	•
SB36	Sink Base Cabinet - 36" W	•+	•	•	•
SB42	Sink Base Cabinet w/ CS - 42" W	•+	•	•	•
SB48	Sink Base Cabinet w/ CS - 48" W	•+	•	•	-
CSF42	Corner Sink Front for 42" Space - 27" W	•+	•	•	•
CSF-FLOOR	Natural Corner Sink Front Floor 48" x 48"	•	•	•	•
BB36	Blind Base Cabinet for 36" to 39" Space - 30"W	•	•	•	•
BB42	Blind Base Cabinet for 42" to 45" Space - 36" W	•+	•	•	•
BB48	Blind Base Cab for 48" to 51" Space - 48" W	•+	•	•	•
ER33	Easy Reach Base Cabinet - 33" W x 33" D	•	•	•	-
ER36	Easy Reach Base Cabinet - 36" W x 36" D	•	•	•	•
DDB18	Desk Drawer Base - 18" W x 29.5" H x 24" D	•+	•	•	-
MBC30	Microwave Base Cabinet - 30" W	•+	•	•	-
<b>Tall Cabinets</b>					
P1884	Pantry - 18" W x 84" H	•	•	•	•
P1890	Pantry - 18" W x 90" H	•	•	•	•
P1896	Pantry - 18" W x 96" H	•	•	•	•
P2484	Pantry - 24" W x 84" H	•	•	•	-
P2490	Pantry - 24" W x 90" H	•	•	•	-
P2496	Pantry - 24" W x 96" H	•	•	•	-
P3090	Pantry - 30" W x 90" H	•	•	•	-
P3096	Pantry - 30" W x 96" H	•	•	•	-
OC3390	Oven Cabinet - 33" W x 90" H	•+	•	•	•
OC3396	Oven Cabinet - 33" W x 96" H	•+	•	•	•
OP3353	Oven Cabinet Overlay Panel - 33" W x 53" H	•	•	•	•
OCD337	Oven Cabinet Drawer	•+	•	•	•
<b>Vanities</b>					
V21	Single Door Vanity - 21" W	•+	•	-	-
V24-2	Double Door Vanity - 24" W	•+	•	•	•
V27	Double Door Vanity - 27" W	•+	•	•	•
V30	Double Door Vanity - 30" W	•+	•	•	•
V33	Double Door Vanity - 33" W	•+	•	•	•
V36	Double Door Vanity - 36" W	•+	•	•	•
VB12	Single Door Base Vanity - 12" W	•+	•	•	-
VB15	Single Door Base Vanity - 15" W	•+	•	•	•
VB18	Single Door Base Vanity - 18" W	•+	•	•	•

Item Code	Item Description	Shaker	Brooklyn	Napa	Essential
		Premier	Builder		
<b>Vanities</b>					
VDB12	Vanity Drawer Base - 12" W	•+	•	•	•
VDB15	Vanity Drawer Base - 15" W	•+	•	•	•
VDB18	Vanity Drawer Base - 18" W	•+	•	•	•
VDB21	Vanity Drawer Base - 21" W	-	-	-	•
VDB24	Vanity Drawer Base - 24" W	•+	•	•	•
VSB36	Vanity Sink Base - 36" W	•+	•	•	•
VSB42	Vanity Sink Base - 42" W	•+	•	•	•
VSB48	Vanity Sink Base - 48" W	•+	•	•	•
VSBDR30	Vanity Sink Drawer Base Right - 30" W	•+	•	•	-
VSBDL30	Vanity Sink Drawer Base Left - 30" W	•+	•	•	-
VSBDR36	Vanity Sink Drawer Base Right - 36" W	•+	•	•	-
VSBDL36	Vanity Sink Drawer Base Left - 36" W	•+	•	•	-
KD24	Vanity Drawer - 24" W	•	•	•	-
KD36	Vanity Drawer - 36" W with Adjustable Sides	•	•	•	-
VSBOS36	Open Shelf Vanity SB - 36" W	•	•	•	-
<b>Moldings and Trim</b>					
BAM8	Batten Molding	•	•	•	•
BCM8	Large Crown Molding	-	•	•	•
BEM8	Bottom Edge Molding (Narrow Light Rail)	•	•	•	•
CM8	Traditional Crown Molding	-	•	•	•
COM8	Cove Crown Molding	•	•	•	•
FBM8	Furniture Base Molding	•	•	•	•
LRM8	Traditional Light Rail	•	•	•	•
OCM8	Outside Corner Molding	•	•	•	•
RCM8	Royal Crown Molding	•	•	•	•
SCM8	Shaker Crown Molding	•	-	-	•
SHOE	Shoe Molding	•	•	•	•
SCRIBE	Scribe	•	•	•	•
TKS8	Toe Kick	•	•	•	•
<b>Fillers and Panels</b>					
BBP4842	Bead Board - 48" W x 42" H x 0.25" D	•	•	•	•
BCE1596	Book Case End - 1.5" W x 96" H x 15" D	•	•	•	•
BPLG4896	Back Panel (Long Grain) - 48" W x 96" H	•	•	•	•
DWR3	Dishwasher End Panel 3" W x 34.5" H x 24" D	•	•	•	•
F396	Filler - 3" W x 96" H	•	•	•	•
F696	Filler - 6" W x 96" H	•	•	•	•
FF396	Fluted Filler - 3" W x 96" H	-	•	•	•
OLF330	Overlay Filler - 3" W x 30" H	•	•	•	•
OLF336	Overlay Filler - 3" W x 36" H	•	•	•	•
OLF342	Overlay Filler - 3" W x 42" H	•	•	•	•
OLF630	Overlay Filler - 6" W x 30" H	•	•	•	•
PSP4896	1/2" Thick Finished Plywood Panel 96" W x 48" H	•	•	•	•
TEP3096	Tall End Panel 1.5" W x 96" H x 30" D	•	•	•	•

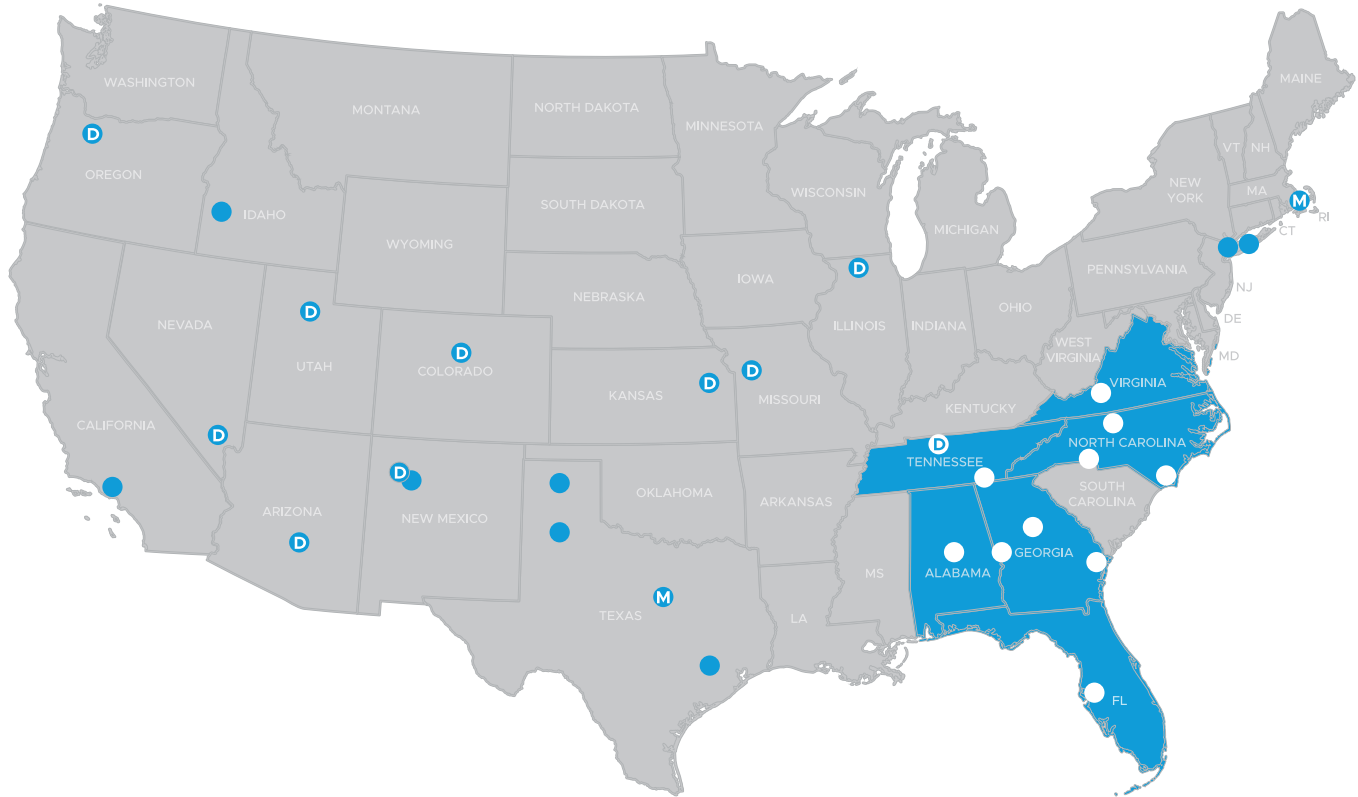
\*All Shaker Designer White drawers are available with either a slab drawer front or 5-Piece drawer front. All 5-Piece SKUs are notated with '5PC' on the Order Form







# Servicing America



DOOR MANUFACTURING



MOULDING AND MILLWORK MANUFACTURING

## ATLANTA

330 Patton Drive SW  
Atlanta, GA 30336  
Tel: 404-699-3900

## BIRMINGHAM

7198 County Road 51  
Clanton, AL 35045  
Tel: 205-664-0224

## CHARLOTTE

2201- A Interstate North Dr  
Charlotte, NC 28206  
Tel: 704-494-0703

## CHATTANOOGA

109 Industrial Park Drive  
Soddy-Daisy, TN 37379  
Tel: 423-332-1377

## COLUMBUS

6105 Coca Cola Blvd  
Columbus, GA 31909  
Tel: 706-565-5337

## KERNERSVILLE

637 Graves Street  
Kernersville, NC 27284  
Tel: 336-993-8686

## ROANOKE

7742 Enon Drive  
Roanoke, VA 24019  
Tel: 540-857-0425

## SAVANNAH

165 Knowlton Way, Ste 111  
Savannah, GA 31407  
Tel: 912-965-1061

## TAMPA

5210 Eagle Trail Drive  
Tampa, FL 33634  
Tel: 813-888-6824

## WILMINGTON

3002 Corporate Drive  
Wilmington, NC 28405  
Tel: 910-794-7225

## OTHER RUGBY LOCATIONS

Albuquerque, TX  
866-437-9663

Carlstadt, NJ  
201-807-9701

Kansas City, MO  
816-531-0161

Nashville, TN  
615-885-0355

Portland, OR  
503-692-3322

Amarillo, TX  
800-8001-6618

Dallas / Fort Worth, TX  
214-638-5161

Las Vegas, NV  
702-248-0050

NY Metro  
631-242-4369

Rockford, IL  
815-965-9439

Boise, ID  
208-336-3911

Denver, CO  
303-296-7260

Los Angeles, CA  
909-466-7315

Olathe, KS  
913-738-8074

Salt Lake City, UT  
801-972-9393

Boston Metro – Stoughton  
781-341-9255

Houston, TX  
713-692-3388

Lubbock, TX  
806-793-2469

Phoenix, AZ  
602-252-3696



Toll-Free 1-855-650-3265

[www.rugbyabp.com](http://www.rugbyabp.com)

[www.ishorugby.com](http://www.ishorugby.com)

February 2024