



**POCKET DOOR
HARDWARE**



**WALL MOUNT DOOR
HARDWARE**



**BYPASS DOOR
HARDWARE**



**MULTI-PASS DOOR
HARDWARE**



**BIFOLD DOOR
HARDWARE**



**MULTI-FOLD DOOR
HARDWARE**

Designed to last a Lifetime. Guaranteed.



Engineered Excellence



Proudly Supplied By

**RIVER CITY
MILLWORK**

1-815-965-9439 | www.rivercitymillwork.com



POCKET DOOR HARDWARE

2060 SERIES



For 1 1/8" to 2 1/4" thick doors up to 400 lbs.

For use in 2x6 stud walls, this is a deluxe commercial grade pocket door frame. It utilizes all-steel, stiff studs to resist bending and warping. Heavy duty extruded aluminum I-beam track, four wheel ball bearing hangers with machine turned 1" wheels.

.125 6063T6 Aluminum track, 11-13 gauge steel parts

2000 SERIES



For 1 1/8" to 1 3/4" thick doors up to 400 lbs.

For use in 2x4 stud walls, this is a deluxe commercial grade pocket door frame. Utilizes wood studs wrapped in steel. Heavy duty extruded aluminum I-beam track, four wheel ball bearing hangers with machine turned 1" wheels.

.125 6063T6 Aluminum track, 11-18 gauge steel parts

1560 SERIES



For 1" to 3" thick doors up to 200 lbs.

For use in 2x6 stud walls, this is a commercial grade pocket door frame. Utilizes a "jump proof" aluminum box track and heavy gauge steel wrapped split studs. Trouble free tricycle hangers with machine turned 1" wheels on convex rails.

.055 6063T6 Aluminum track, 14-18 gauge steel parts

1500 SERIES



For 1" to 1 3/4" thick doors up to 200 lbs.

For use in 2x4 stud walls, this is a commercial grade pocket door frame. Utilizes a "jump proof" aluminum box track and heavy gauge steel wrapped split studs. Trouble free tricycle hangers with machine turned 1" wheels on convex rails.

.055 6063T6 Aluminum track, 14-18 gauge steel parts

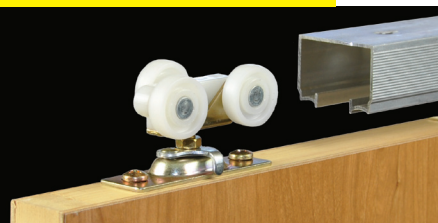
200PD SERIES



For 1 1/8" or thicker doors up to 400 lbs.

A deluxe commercial grade hardware set. Heavy duty extruded aluminum I-Beam track, four wheel ball bearing hangers with machine turned 1" wheels. The 200PD hardware set is used in the 2060 and 2000 Series pocket door frames.

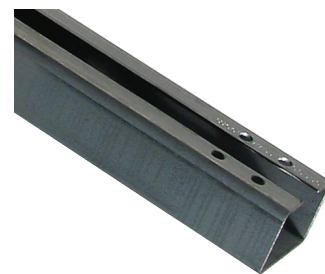
100PD SERIES



For 1" or thicker doors up to 200 lbs.

Trouble free tricycle hangers with machine turned 1" wheels that ride on jump proof convex track rails. Ball bearing hangers available for doors up to 200 lbs. The 100PD hardware set is used in the 1560 and 1500 Series pocket door frames.

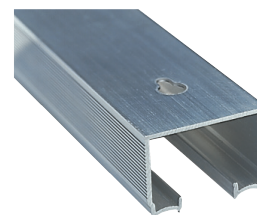
POCKET DOOR HARDWARE



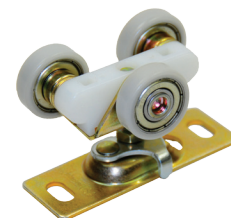
Heavy-Duty all steel studs, used in the 2060, have a comparable flex to a standard stud wall. No warping.



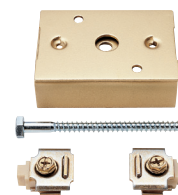
Steel encased wood nailer studs and jamba. Steel protects the pocket from protruding nails.



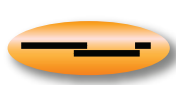
Removable, heavy-gauge extruded aluminum box track. Has key-hole slots for removal.



Tricycle hangers with 1" machine-turned wheels for box track. Ball-bearing available for 200 lbs doors.

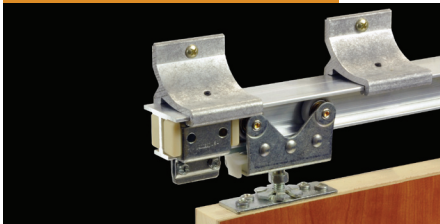


Pocket Door Converging Door Kit. Includes track stops so that the doors stop where needed.



WALL-MOUNTED DOOR HARDWARE

200WM SERIES



For 1 1/8" thick or thicker doors up to 400 lbs.

A commercial grade wall mounted sliding door hardware system designed to carry heavy doors. The 200WM features heavy-duty extruded aluminum I-beam track, track mounting brackets, and four wheel adjustable hangers with machine turned ball bearing wheels.



Anodized, aluminum snap on fascia available in Dark Bronze or Satin finish.

2610F SERIES

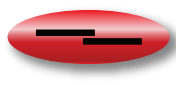


For 1" to 1 3/4" thick doors up to 200 lbs.

The easy to install 2610F commercial grade wall mount sliding door hardware is designed to carry heavy doors up to 200 lbs. Precision extruded aluminum box track features a built in fascia that hides the sliding hardware from view. Strong 3 wheel hangers are adjustable and machine turned.



Anodized, aluminum finish available in Dark Bronze.



SLIDING DOOR HARDWARE

200SD SERIES



For 1 1/8" thick or thicker doors up to 400 lbs.

A deluxe commercial grade wall mounted sliding door hardware system designed to carry heavy doors. The 200SD features heavy-duty extruded aluminum I-beam track, track mounting brackets, and four wheel adjustable hangers with machine turned ball bearing wheels.

100SD SERIES



For 1" or thicker doors up to 200 lbs.

Trouble free tricycle hangers with machine turned 1" wheels that ride on jump proof convex track rails. Ball bearing hangers included in the set for doors up to 200 lbs. Hangers are easily adjustable with included wrench.

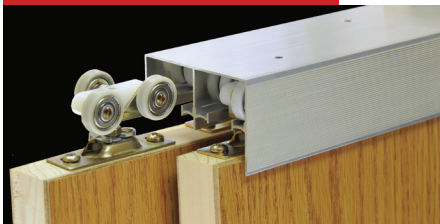


1 3/8" Plate

1 3/4" Plate

Side Mount Door Plates available for the 100SD, 138F, and 134F.

138F/134F SERIES



For 1" or thicker doors up to 200 lbs.

Trouble free tricycle hangers with machine turned 1" wheels that ride on jump proof convex track rails. Ball bearing hangers available for doors up to 200 lbs. Precision extruded aluminum box track features a built in fascia that hides the sliding hardware from view.



Anodized, aluminum finish available in Dark Bronze for the 138F.

111SD SERIES



For 3/4" or thicker doors up to 150 lbs.

Trouble free tricycle hangers with machine turned 3/4" wheels that ride on jump proof convex track rails. Ball bearing hangers included in the set for doors up to 150 lbs. Hangers are easily adjustable with included wrench.



1023 Saddle Bracket available for 3/4" thick doors.

FOLDING DOOR HARDWARE

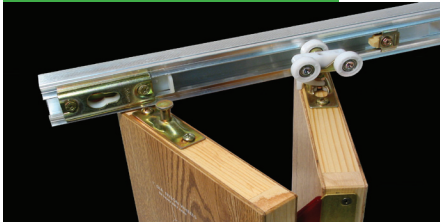
200FD SERIES



For 1 1/8" to 1 3/4" thick panels up to 125 lbs/each
 A deluxe bifold hardware set for 12" to 48" panels up to 108" tall. Top hung, heavy duty I-beam track, four wheel (1" dia.) ball bearing hangers, heavy duty bottom pivot set.

.125 6063T6 Aluminum track, 11-13 gauge steel parts

100FD SERIES



For 1" to 1 3/4" thick panels up to 75 lbs/each
 An excellent bifold hardware set for 12"-24" panels up to 108" tall. Convex rail track, top hung, three wheel (1" dia.) ball bearing hangers, non-mortise lift off hinges.

.055 6063T6 Aluminum track, 14-16 gauge steel parts

111FD SERIES



For 3/4" to 1 3/4" thick panels up to 50 lbs/each
 A superior light commercial bifold hardware set for 12"-24" panels up to 108" tall. Convex rail track, top hung, three wheel (3/4" dia.) hangers, self locating, shock absorbing hinges.

.052 6063T6 Aluminum track, 14-16 gauge steel parts



1 1/8" Plate



1 3/8" Plate



1 3/4" Plate

Side Mount Door Plates available for the 100FD.

MULTIPLE DOOR HARDWARE

200MD SERIES



For 1 1/8" or thicker doors up to 400 lbs/each
 A deluxe, commercial Multi-Slide hardware set. Bottom track and guides used to allow full left to right operation. Top hung, heavy duty I-beam track, four wheel (1" dia.) ball bearing hangers.

.125 6063T6 Aluminum track, 11-13 gauge steel parts

100MD SERIES



For 1" or thicker doors up to 200 lbs/each
 A heavy duty commercial Multi-Slide hardware set. Bottom track and guides used to allow full left to right operation. Convex rail track, top hung, three wheel (1" dia.) ball bearing hangers.

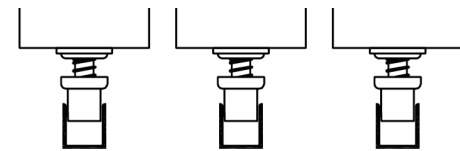
.055 6063T6 Aluminum track, 14-16 gauge steel parts

111MD SERIES



For 3/4" or thicker panels up to 150 lbs/each
 A superior light commercial Multi-Slide hardware set. Bottom track and guides used to allow full left to right operation. Convex rail track, top hung, three wheel (3/4" dia.) hangers.

.052 6063T6 Aluminum track, 14-16 gauge steel parts



Standard Guide Track Installation



Side mount guide posts can be used to allow for a setup that does not require bottom guide tracks. Individual guide posts are used and travel inside a groove in the bottom of each door to make for a clean floor in the opening.