

**RUGBY**<sup>®</sup>  
Architectural Building Products

Rugby Architectural Building Products is pleased to present our 2024 Product Catalog that features an extensive assortment of ready-to-assemble and factory assembled cabinets. These cabinets are competitively priced, in stock, and ready-to-install. Solid Surface countertop material, laminate countertops, cabinet accessories and hardware round out the cabinet program.

To help you to quickly assess extensive information on all products we have a brochure-within-brochure feature that provides you with convenient access to more detailed product information. Be sure to check out a thought provoking TED talk video on page 27.

If you have any questions about products or services, please call us at **855-650-3265**.

The Rugby team is ready to assist and deliver these products to your door and remember:

**When you need cabinets,  
you need Rugby!**



The mark of responsible forestry

Look for FSC® Certified Products



## Table of Contents

iShopRugby.com .....	4
KCD Kitchen Cabinets .....	6
Kitchen Kompact Kitchen Cabinets .....	8
Staron: 100% Acrylic Solid Surface .....	9
Shinnoki: Prefinished Wood Panels .....	10
Querkus: Textured European White Oak & Reclaimed Panels .....	11
Echo Wood: Reconstituted Wood Veneers.....	12
Veneer Tech: Premium Hardwood Sheet Veneer & Edgebanding .....	14
GL Veneer .....	15
VT Industries: Countertops .....	16
Columbia Forest Products Hardwood Plywood .....	17
Dragon Ply: Premium Hardwood Plywood .....	18
Cabinet Grade Plywood .....	19
Adhesives: Titebond, Choice Brands .....	20
Composites: Arauco, Roseburg.....	21
Dollken: PVC Edgebanding .....	22
Genesis Products: Drawer Systems .....	23
Salice: Hinges, Drawer Slides.....	24
Knape & Vogt: Slide Systems.....	24
Rev-A-Shelf: Cabinet Accessories.....	25
Price Industrial: Handles and Knobs.....	26
Deerwood Fasteners.....	26
Domestic Species: Hardwood Lumber .....	27
Domestic Species: Softwood Lumber.....	27
ADENTRA Imports .....	28

# Shop quickly and easily on

# iShop **RUGBY**.com

Experience iShop **RUGBY**.com today!



**+125,000**  
products online at  
iShopRugby.com

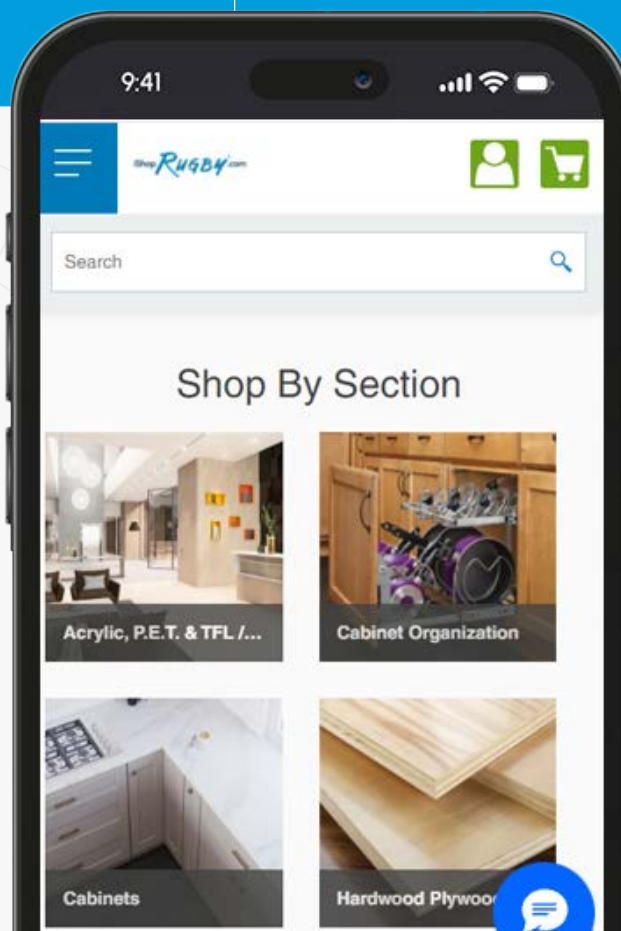
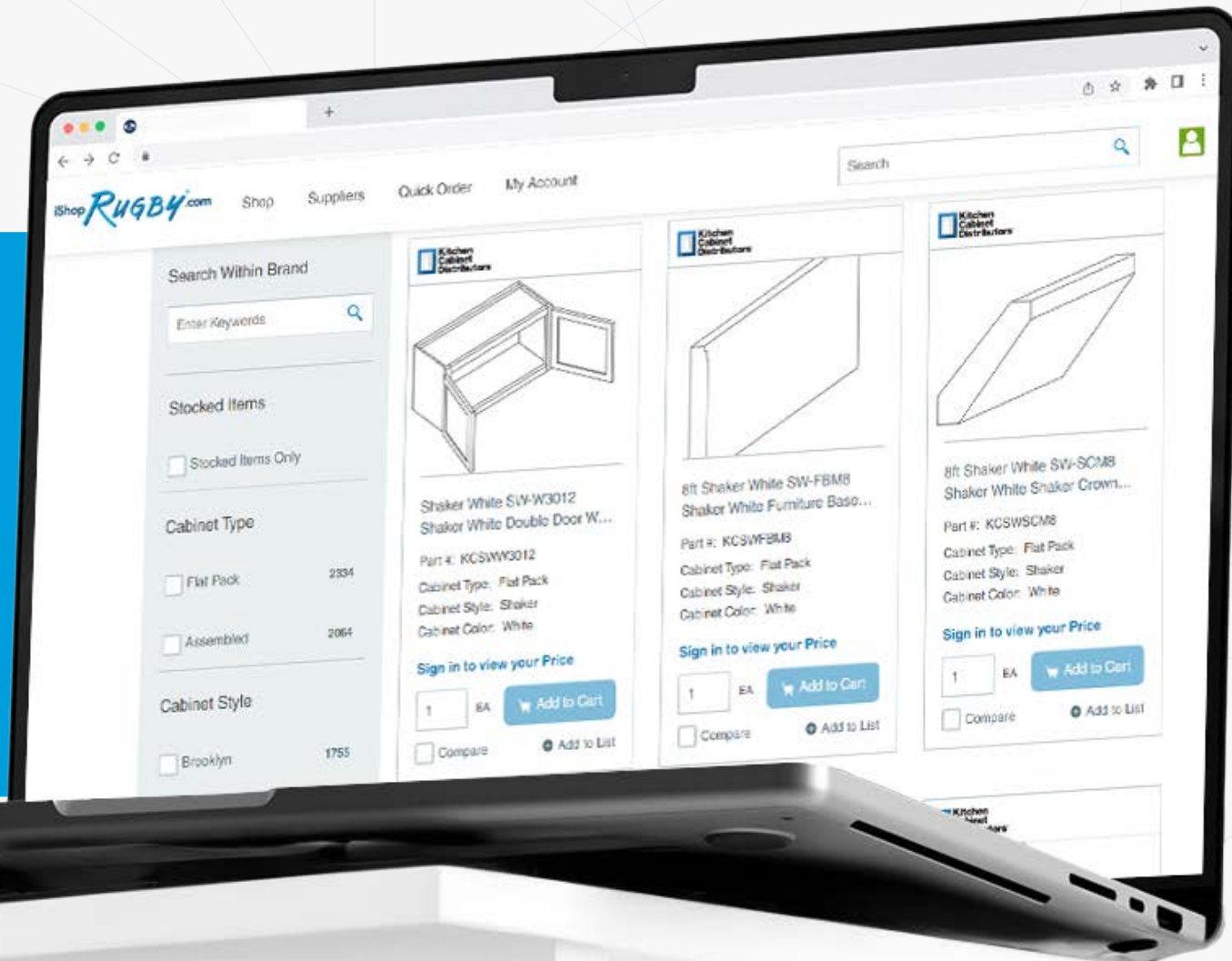


**SHOP**  
when it's most  
convenient for  
you 24/7



**MANAGE**  
your account

- ✓ Place orders
- ✓ Check order status
- ✓ Research products
- ✓ ...and more!



**SCAN**  
THE QR CODE  
with your tablet or phone  
to see KCD Products



# When You Need Cabinets, You Need KCD!



You provide the space, and we'll provide all the cabinet and accessory solutions you need to get the job done right.



[CLICK TO VIEW BROCHURE](#)

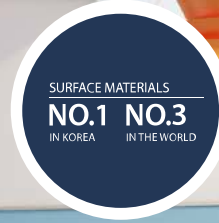


[CLICK TO VIEW BROCHURE](#)

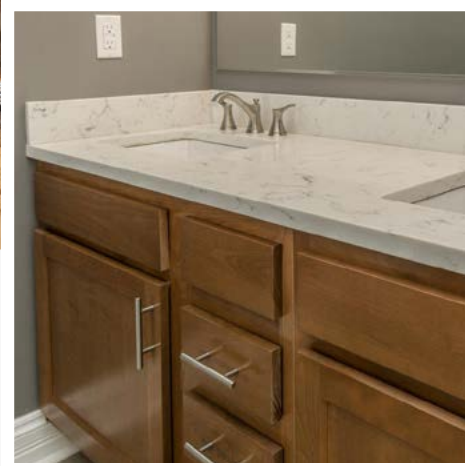
Count on Rugby to deliver precisely engineered cabinets with your choice of traditional or contemporary door styles along with an extensive assortment of Rev-A-Shelf accessories. All our products are engineered from high quality materials and backed by comprehensive product warranties.

- Over 1000 different cabinet accessory options
- Both contemporary and traditional door styles
- Comprehensive Rev-A-Shelf hardware program





**staron**<sup>®</sup>  
Solid Surfaces



There's solid wood durability built into every KK cabinet. From the hardwood doors and stiles to the solid wood elements, each cabinet is built to last.

**Note these quality features:**

- All frames are built of solid 3/4" hardwoods. Each rail is kiln-dried, joined by mortise and tenon, and then glued for added strength
- Solid wood toe kicks, 3/4" thick
- Solid wood hanging strips on wall and base cabinets, located at the top and bottom
- End panels consist of 3-ply construction, 1/2" thick engineered wood core with hardwood veneers

All painted and stained cabinets are protected with a durable topcoat. The result is a surface that is virtually "family-proof," resisting many household chemicals, water, alcoholic beverages, mild acids, and even nail polish.

The result is more than just a kitchen you can cook in — it's a kitchen you can live in at a price you can live with.

Kitchen & Bath Cabinetry



CLICK TO VIEW BROCHURE

List Prices & Specifications



CLICK TO VIEW BROCHURE

**100% Acrylic Solid Surface**

Staron high-performance acrylic solid surface is known for excellent workability and easy maintenance. Its homogenous, color-through composition is nonporous and ultra-hygienic, making Staron an ideal surfacing option for a wide range of commercial interior applications and residential spaces.

- 10-year limited commercial warranty
- Ultra hygienic / non-porous
- Thermo-formable
- 90 design inspired color options available
- Integrated sinks and bowls available. All ADA compliant
- Sample sets of Staron are available along with individual color samples



CLICK TO VIEW BROCHURE

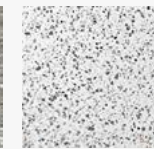


SAMPLE BINDER AVAILABLE

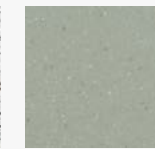
12 OF 90 COLORS STOCKED BY RUGBY



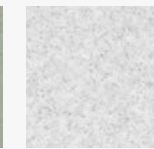
Pebble Grey



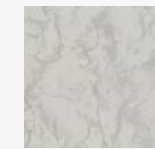
Venezia



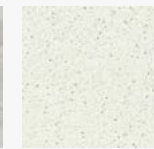
Meadow



White Paper



Dawn



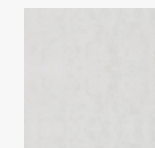
Bamboo



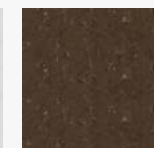
Glimmer



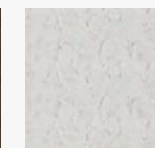
Rattan



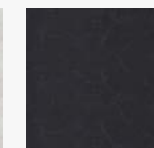
Cloudbank



Loam



Ocean View



Presto





## Enhanced Shinnoki Collection For 2024

- Prefinished wood panels – 5% sheen matte finish
- Mixmatching technique gives a natural look of solid wood
- Europe's top designers put together range of selections
- Protective coat guards against marks and scratches
- 3/4" 4' x 9' NAF MDF – 2 sided
- Prefinished 0.6mm edgeband and 1mm ABS edgeband available
- FSC® certified available on request
- TSCA Title VI compliant

Prefinished Wood Panels



CLICK TO VIEW BROCHURE

Acoustical Solutions



CLICK TO VIEW BROCHURE



EDGEBANDING

### 18 DESIGNS STOCKED BY RUGBY



## Textured European White Oak & Reclaimed Panels

- Wire brushed & patented "saw effect" scratching
- Mixmatch technique to give natural appearance of solid wood
- Thick cut veneer for deep brushing and scratching
- European white oak – matched for color consistency
- Reclaimed veneer from railways in Europe
- 20mm 48.8" x 98.4" on MDF
- 0.8mm and 1mm edgeband available, brushed and scratched

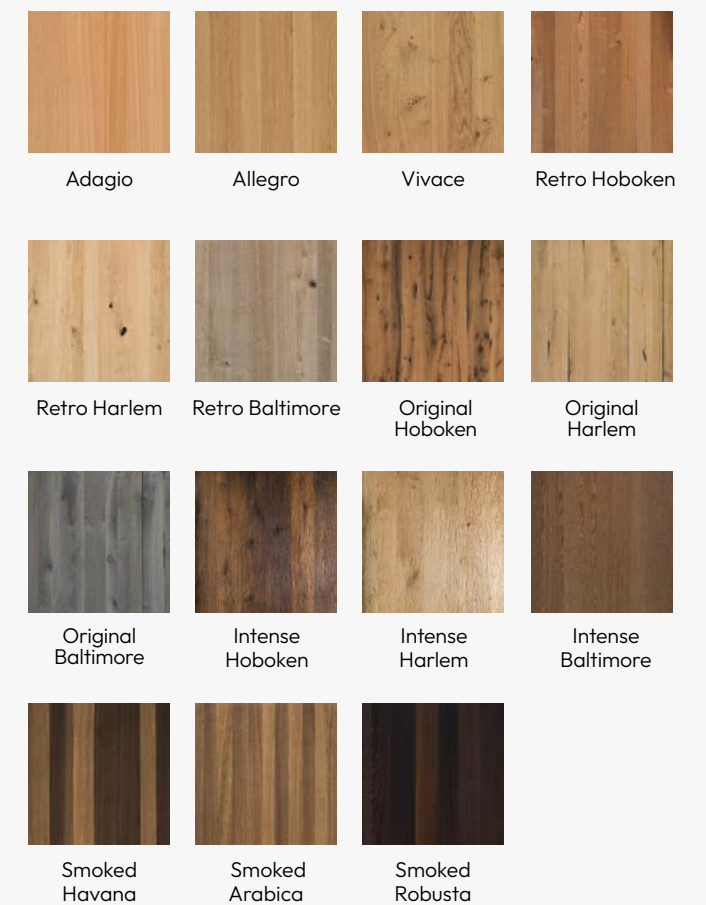


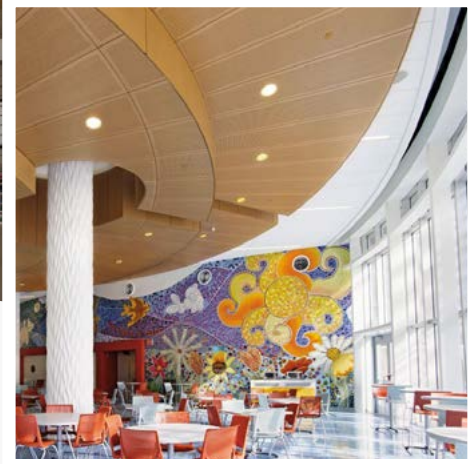
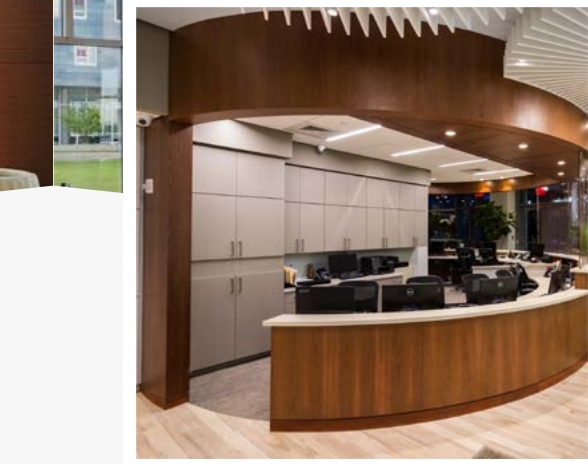
CLICK TO VIEW BROCHURE



EDGEBANDING

### 15 AVAILABLE DESIGNS





## Reconstituted Wood Veneers

- High quality, reconstituted, real wood veneer
- 0.6mm and 2.0mm matching edgebanding
- Veneer sheets or custom panel lay up
- Subject to volume and lead time, an infinite array of custom colors and patterns available
- NAUF and NAF options
- FSC<sup>®</sup> certified available on request

Our reconstituted wood products echo nature's most desired and rare species without impacting the sustainability of these great forests. The use of common wood fiber from well managed, plantation grown and FSC<sup>®</sup> certified forests, are used for the production of Echo Wood<sup>®</sup> products.

Reconstituted veneer provides the same look as the most expensive and rare woods. Echo Wood<sup>®</sup> provides the highest quality, architectural wood veneers, panels and edge tape that are defect free and consistent in color and grain.



A&D BINDER



SAMPLE FAN DECK

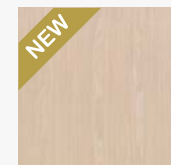


EDGEBANDING

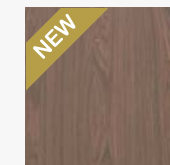


CLICK TO VIEW BROCHURE

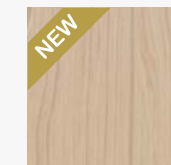
## 16 AVAILABLE DESIGNS



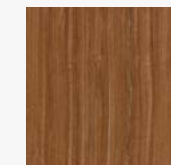
River Pine



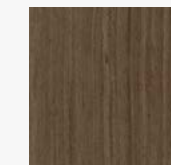
Mountain Walnut



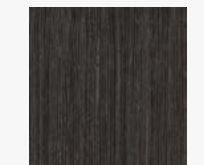
Desert Acacia



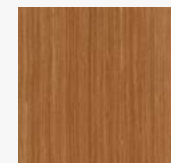
Qtr. Cherry



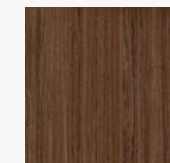
Qtr. Walnut



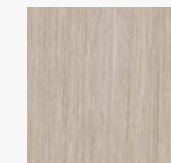
Slate



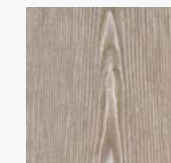
VG Fir



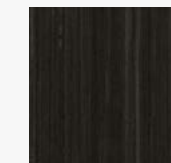
Qtr. Teak



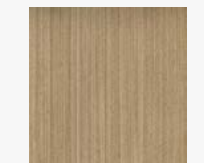
Monterey



Napa



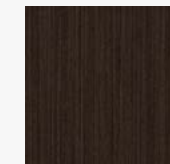
Qtr. Gun Metal  
Ebony



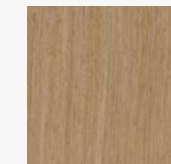
Qtr. Champagne



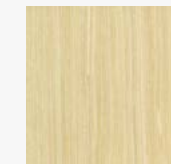
PS Walnut



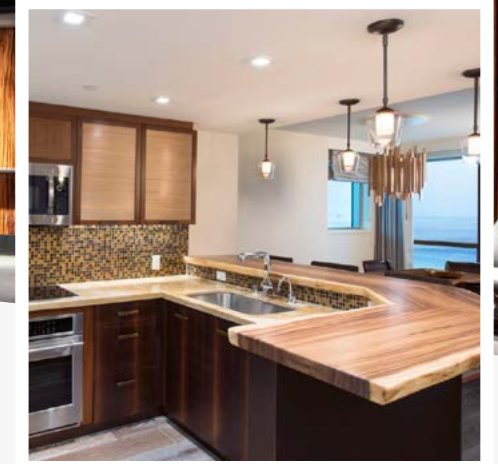
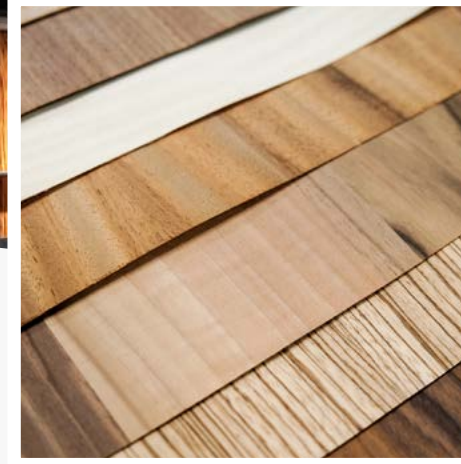
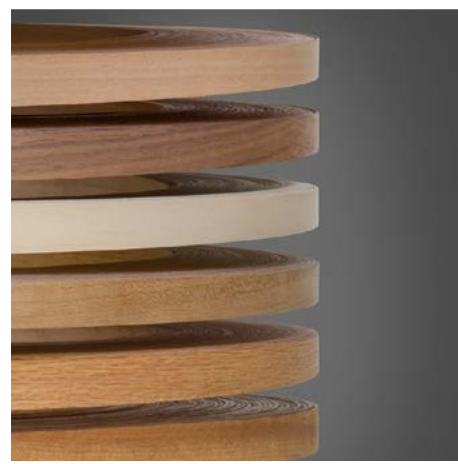
Qtr. Wenge



Rift White Oak



Qtr. Maple



## Premium Hardwood Sheet Veneer & Edgebanding

Veneer Technologies, Inc. manufactures high end decorative hardwood veneer faces. They carry most domestic species and have access to many exotic species from around the world. They currently operate ten continuous cross feed splicers, producing approximately 6.5 million finished square feet of face veneer per month.

### Sheet Veneer

Manufactured with a select grade face veneer crosslinked to a variety of backers. Backers include 10 mil, 20 mil, 2-ply with cross-grain back, 3M peel-n-stick, polyback, true phenolic. Sizes are 4' x 8', 4' x 10', 4' x 12'.

### Wood Edgebanding

- Standard wood edgebanding
- 500' rolls, fleeced and sanded
- 250' rolls, preglued EVA hotmelt
- UV prefinished, preglued or fleece backed
- Widths ½" to 2"
- Custom widths and lengths available

### Melamine Edgebanding

- Standard colors
- 250' rolls
- Preglued

### Thick Wood Edge Rolls

- 328' rolls. Thickness 1mm, 1.5mm, 2mm and 3mm

## MANY DOMESTIC AND EXOTIC SPECIES AVAILABLE

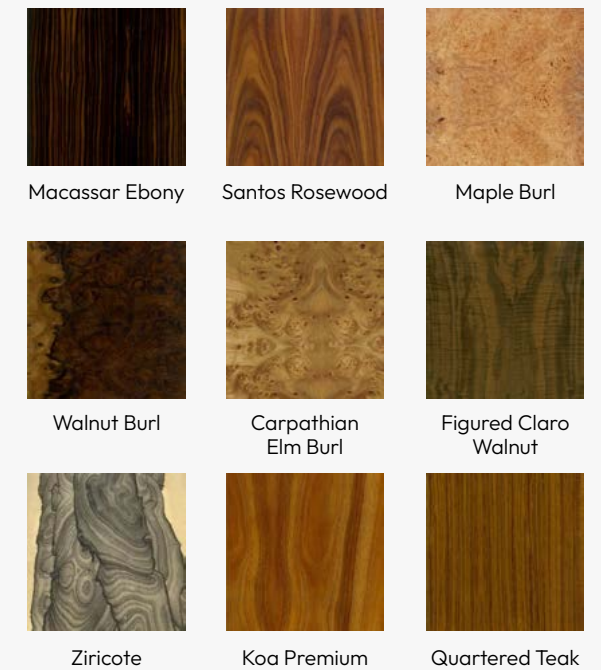


CLICK TO VIEW BROCHURE

With more than 880 ready-to-ship wood veneer products in stock — literally billions of square feet of material — GL Veneer features one of the most extensive wood veneer sheet inventories in North America.

- 200+ Species
- Leveneer™ – Proprietary wood material for contour applications
- Meet every specification – color, grain, figure, cut, match, size and backer
- Standard & Custom Sizes – Pre-cut, standard sheets or any special request, made-to-order size

## MANY OPTIONS AVAILABLE



[Please inquire about available widths and species](#)





In addition to vanities, VT Industries is a leading manufacturer of countertops, offering homeowners dynamic options, including granite, VT TruQuartz™, VT Dimensions® and VT VersaTop™. We also offer a variety of distinctive edge profiles designed to bring custom style to any kitchen, bath or bar project.

VT Dimensions® countertops bring everything together in one seamless offering — from the slab-like core, to the naturally beautiful surface, to the premium edge profiles.

- ▶ State-of-the-art manufacturing assures your satisfaction every time
- ▶ 45-lb. industrial particleboard as standard (meets HUD and government specs; ANSI approved)
- ▶ EQ countertops are FSC® certified to originate from responsibly managed forests
- ▶ GREENGUARD Gold Certified for low chemical emissions
- ▶ PVA glue line provides strongest possible bond between particle board and laminate



[CLICK TO VIEW BROCHURE](#)

Founded in 1957, Columbia Forest Products is North America's largest manufacturer of hardwood plywood and hardwood veneer products. Columbia's decorative interior veneers and panels are used in high-end cabinetry, fine furniture, architectural millwork and commercial fixtures.

- ▶ Species: Various
- ▶ Face grades: A,B,C,D,E
- ▶ Back grades: 1,2,3,4
- ▶ Sizes: 4×6, 4×7, 4×8, 4×10, 5×8, 8×4
- ▶ Thickness: 1/8" to 1-1/4"
- ▶ Core types: JayCore®, KayCore®, veneer core, particleboard core (PBC), medium density fibercore (MDF), combination core, Classic Core®, lumber core
- ▶ UV Capabilities
- ▶ FSC® certified available on request



EDGEBANDING

Hardwood Plywood



[CLICK TO VIEW BROCHURE](#)

Appalachian Traditions



[CLICK TO VIEW BROCHURE](#)

Grading Guide



[CLICK TO VIEW BROCHURE](#)



Building on the reputation of quality and consistent performance, Dragon Ply is proud to present the newest offerings from South East Asian region of the globe.

- New countries of origin and new fiber supply chains
- The same consistent quality, performance and cost savings advantage
- Available in both thick and thin face options
- Thick fancy veneers are graded on HPVA standards and composed at state-of-the-art facilities
- FSC® certified available on request
- TSCA Title VI compliant








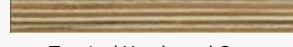
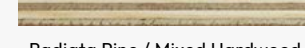
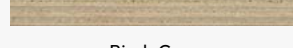
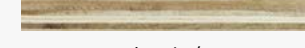
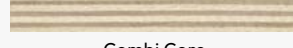

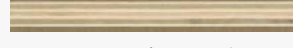

**Common Species**

- European Beech
- White Maple
- Alder
- Hickory
- Black Walnut
- Ash
- White Birch
- Red Oak



[CLICK TO VIEW BROCHURE](#)

**AVAILABLE CORES**

<b>NEW</b>		<b>NEW</b>	
	Rubberwood Core		Eucalyptus / Malabar Combi Core
			
	Eucalyptus Core		Poplar
			
	PBC Core		Poplar Veneer Core <i>Also available as FSC® Mix 98%</i>
			
	Lumber Core		Tropical Hardwood Core <i>Also available as FSC® Mix 98%</i>
			
	Radiata Pine / Mixed Hardwood Combi Core		Birch Core <i>Also available as FSC® Mix 98%</i>
			
	Acacia / Eucalyptus Combi Core		Combi Core <i>Also available as FSC® Mix 98%</i>
			
	MDF Core		MDF X-Band Veneer Core <i>Also available 7-Ply</i>
			
	Ultra Light Weight		

- Directly sourced and imported by Rugby
- Quality control inspected by our onsite staff ensures consistent performance and value
- Acacia/Eucalyptus Veneer Core provides flat and stable panels
- Thickness tolerance +/- 0.5mm
- Moisture content under 14%
- Our corporate compliance program ensures a responsible and legal supply chain
- TSCA tested and certified

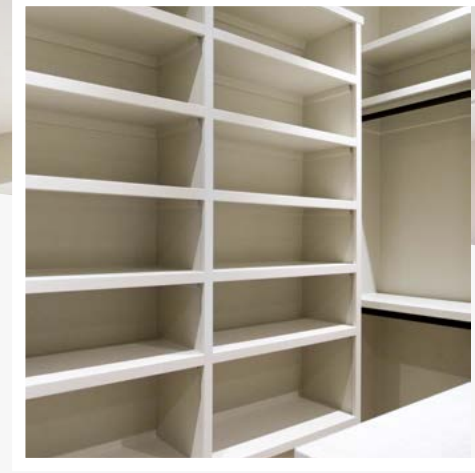


[CLICK TO VIEW BROCHURE](#)



# Adhesives

# Composites



Rugby is a full line distributor of all Titebond & Franklin products.

**We are proud to offer:**

- Titebond I, II & III Wood Glue
- Color matched caulking
- Heavy Duty Construction Adhesive
- Fast Set Polyurethane Construction Adhesive
- FRP Solvent Free Adhesive
- Weather Master Sealants
- Ultimate MP
- Silicones

Choice Brands Adhesives started in 2010 to provide industrial adhesives to a wide variety of markets and applications. Our company was founded by experienced adhesive veterans formerly with Imperial Adhesives / Sovereign Adhesives / Henkel Adhesives.

**We serve a wide variety of markets:**

- Cabinets and Millwork
- Countertops
- Office Furniture
- Case Goods
- Panel Lamination
- Furniture
- Foam Fabricating
- Bedding
- Sporting Goods
- Commercial Roofing
- Insulation
- Waterproofing
- Marine
- Recreational Vehicle
- Automotive Aftermarket

- 1/2" - 1-1/8" thick, 4', 5' and 6' wide
- Cut to size and countertop sizes
- CARB2, ULEF, NAF, FSC® Certified
- Available in water-resistant, fire-rated and FSC® certified
- Products include Duraf Flake, Vesta, Terra

Roseburg produces one of the most popular machinable particleboard panels on the market today. Our UltraBlend panels are a premium-quality, mat-formed, multilayer wood particle board. These panels are made predominantly of precision-refined wood particles that are bonded with thermosetting resins.

UltraBlend features a highly refined smooth surface and tight uniform core with machinable edges and excellent dimensional stability. UltraBlend particleboard panels are designed for the demanding laminating and edge machining applications of today's precision woodworking industry.



CLICK TO VIEW BROCHURE



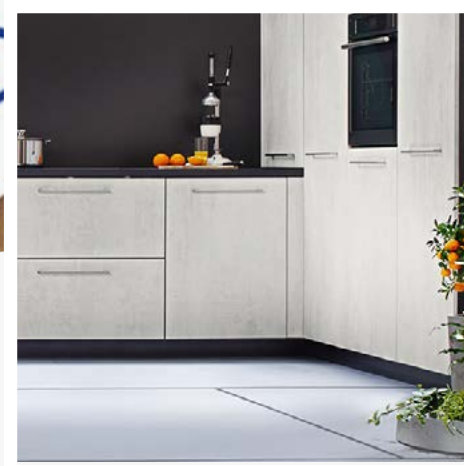
CLICK TO VIEW BROCHURE



CLICK TO VIEW BROCHURE



CLICK TO VIEW BROCHURE



## PVC Edgebanding

Doellken PVC Edgebanding is the finest, most consistent product available on the market today. Typical applications of PVC Edgebanding include residential and office furniture, institutional case goods (laboratories, hospitals, medical offices, schools, etc.), store fixtures, kitchens, locker rooms and numerous others. Doellken Edgebanding comes in thicknesses of .018" (0.45 mm) to 3 mm and widths ranging from 5/8" (16mm) to 2-3/16" (55mm).

- ◆ The SpecLine and DoellkenFlex program are available from stock in 5 different sizes
- ◆ All edgebanding products are available in solid colors, designer patterns and woodgrains
- ◆ With 11 different embosses, your edgebands will have a natural appearance and a deep emboss feel



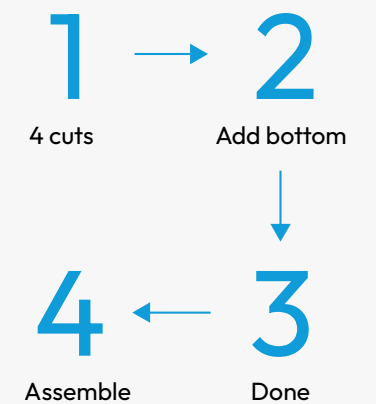
[CLICK TO VIEW BROCHURE](#)

Genesis knows that selecting a drawer manufacturer is a major decision. You want to make sure you get the quality your project demands, the price that affords you a profit and the service you deserve. Genesis has manufactured quality drawer systems for more than 30 years and has built its success on service, value and superior craftsmanship.

To maximize the functionality of your drawer space Genesis offers multiple storage and convenience options. In order to build the highest quality wood drawers, you have to start with the finest quality materials. For that, Genesis select from the most beautiful domestic species including Maple, Tilia, Cherry and Red Oak.

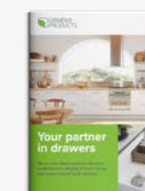
- ◆ Tilia bottom thickness -1/4", Bottom thickness for Maple, Cherry & Red Oak is 3/8"
- ◆ Custom heights ranging from 1 1/2" to 15"
- ◆ English dovetail construction
- ◆ 3/8" bottoms made from VC plywood
- ◆ Durable clean satin finish is standard (Unfinished or staining available upon request)
- ◆ Standard eased top edge (Straight top edge available upon request)
- ◆ Front drilling
- ◆ White vinyl wrapped

## Choose From A Large Variety Of Genesis Blank Options



Drawers

Drawer Blanks



[CLICK TO VIEW BROCHURE](#)



[CLICK TO VIEW BROCHURE](#)

# Kitchen Hardware



## ***SALICE***

Established in 1989, Salice America reflects the leadership claimed by the European parent company for over 50 years.

A complete product line of concealed hinges, drawer slides and sliding door systems made our company the technology leader of the market, a never ending task requiring solid engineering and innovative mentality.



## **KNAP & VOGT**

Knap & Vogt design and manufacture precision, Euro-style and utility slide systems; wall-attached shelving for commercial, home and garage applications; kitchen, closet and bath storage; office and healthcare ergonomics products and specialty hardware. We offer these products under several well-known brand names: KV®, KV Waterloo®, HyLoft®, Real Solutions for Real Life®, John Sterling™ and Shelf-Made®.

**Futura  
Runners**



**CLICK TO VIEW  
BROCHURE**

**Pacta  
Hinge**



**CLICK TO VIEW  
BROCHURE**

**Silentia  
Hinges**



**CLICK TO VIEW  
BROCHURE**

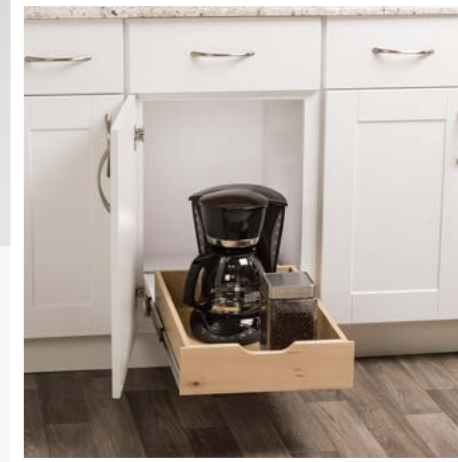
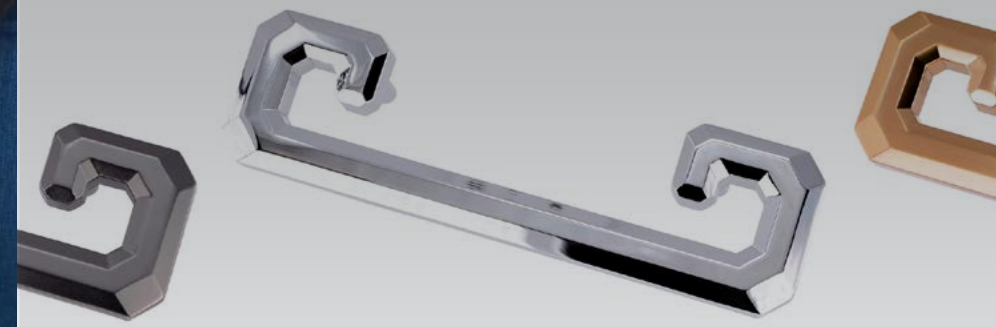
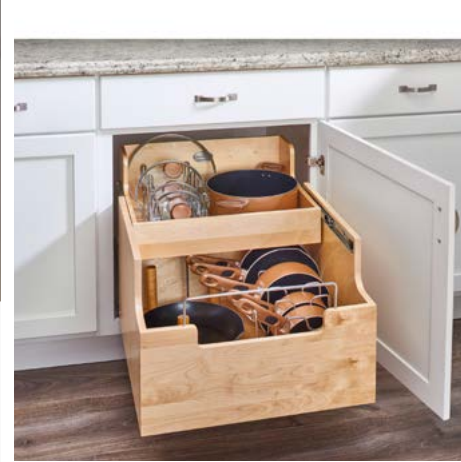
**Wind Lift  
System**



**CLICK TO VIEW  
BROCHURE**



**CLICK TO VIEW  
BROCHURE**



## Wide Range of Cabinet Accessories

Rev-A-Shelf was established in 1978 as a division of Jones Plastics and Engineering, a family owned injection molder of appliances parts, and other custom polymer components (ISO 9002 Certified) with five manufacturing facilities in Kentucky, Tennessee, and Monterrey, Mexico.

Our Product line began as metal and polymer Lazy Susan components manufactured for the largest U.S. cabinet manufacturers and has grown into the market leading innovator of quality, functional residential cabinet storage and organizational products such as Lazy Susans, Kitchen Drawer Organizers, Base Cabinet and Pantry Pull-Outs, functional Waste Containers, LED lighting systems and Childproof Locking System.

Our worldwide presence extends from the U.S. to Europe, Asia, and Mexico, with factories, warehouses and satellite offices strategically located to serve an expanding customer base of kitchen dealers, architects, furniture manufactures, cabinet industry distributors and retail home centers worldwide.



[CLICK TO VIEW BROCHURE](#)



**PRIDE INDUSTRIAL**  
DECORATIVE FUNCTIONAL HARDWARE & MORE

Pride Industrial is a premier manufacturer of hardware for the woodworking industry. We firmly believe in top quality products and the most reliable service.

Our extensive product lines include: elegant designs of handles and knobs for cabinetry and furniture; hand carved wood such as corbels, bar brackets, island posts, onlays and vanity legs.

Decorative Hardware



[CLICK TO VIEW BROCHURE](#)

Functional Hardware

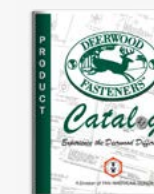


[CLICK TO VIEW BROCHURE](#)



Deerwood Fasteners™ is a leading supplier of High Quality Fasteners manufactured exclusively for woodworking applications. We service our nationwide customer base from our headquarters in Conover, NC and a regional warehouse in California.

Our products include Hinge and Hardware screws in a variety of finishes, Zip Drivers (Self drilling, Self-Counter sinking assembly screws), Painted Head Cabinet Installation screws, Decking screws, Face Frame screws, Drawer Front Adjuster Screws and much, much more.



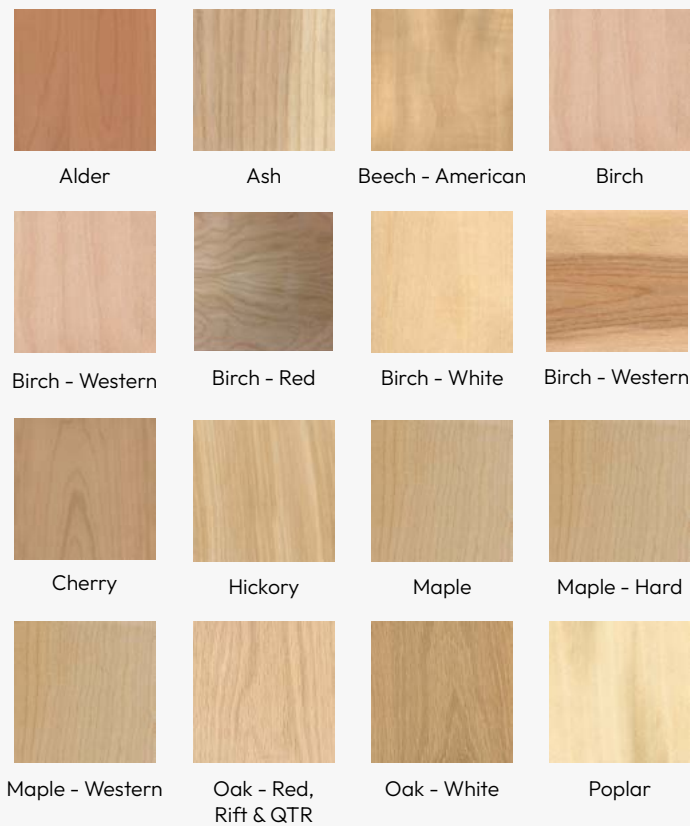
[CLICK TO VIEW BROCHURE](#)

# Hardwood Lumber



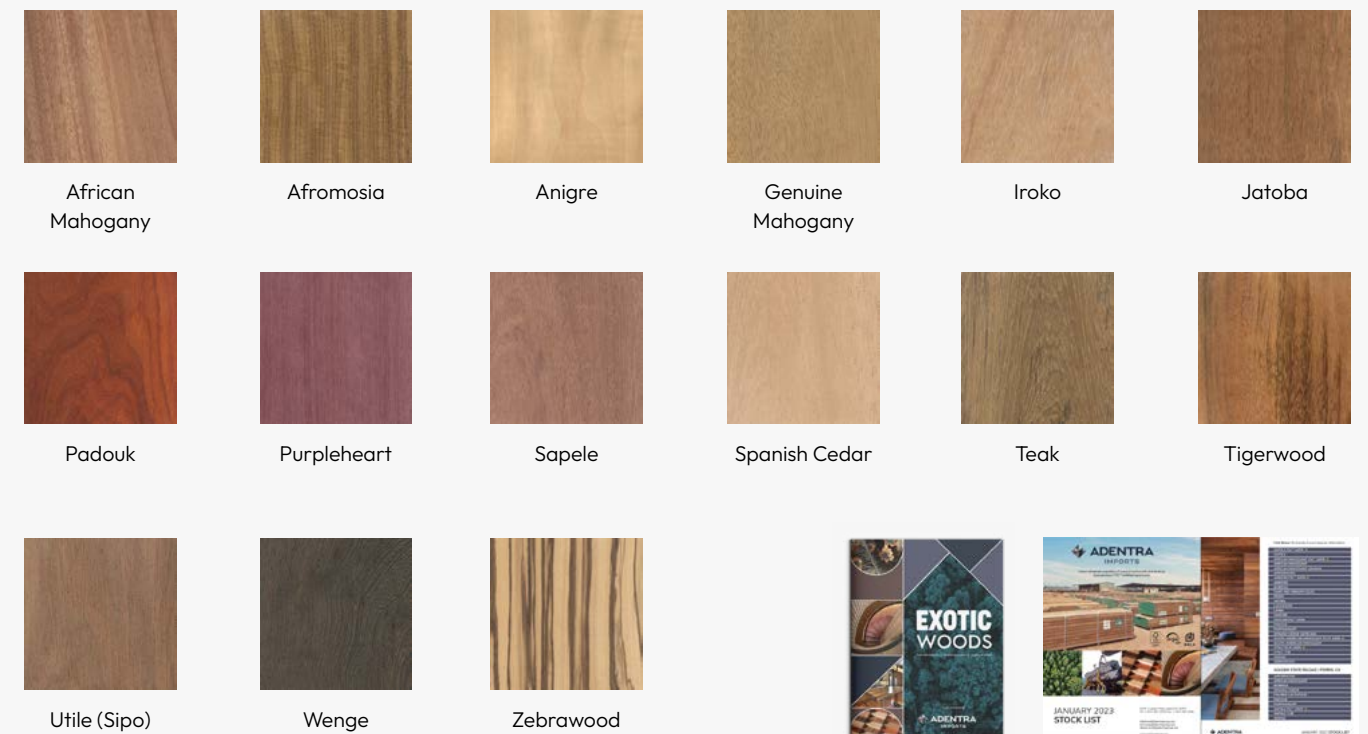
## Domestic Species: Hardwood

- ◆ 4/4 through 16/4. All lengths and grades
- ◆ S2S, SL1E and ripping available
- ◆ Width sorted Red Oak, Hard Maple, and Poplar
- ◆ S4S, Sanding and Custom millwork packages including custom knife grinding available



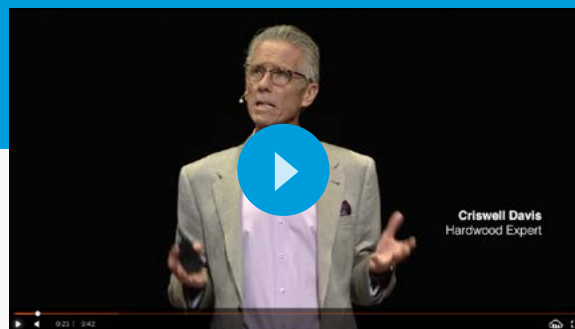
## Imported Species

To ensure prompt supply of exotics and imports, Hardwoods import consolidation yard is located in Leland, North Carolina.



## TED Talks: How Hardwood Lumber Improves Our Lives

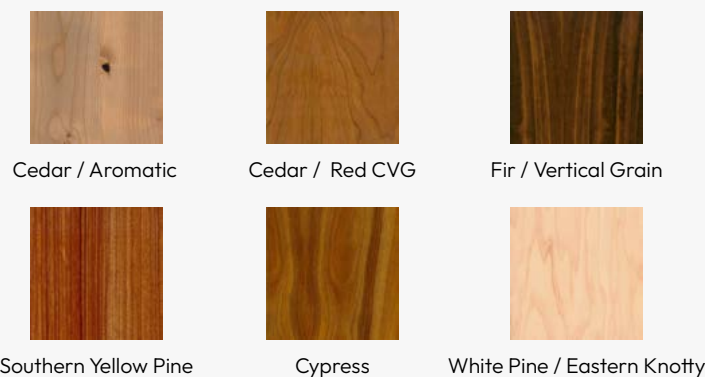
– Criswell Davis | Hardwood Expert



[WATCH NOW](#)

## Domestic Softwood

A comprehensive assortment of Domestic and Imported Options



HARDWOOD LUMBER: IMPORTED



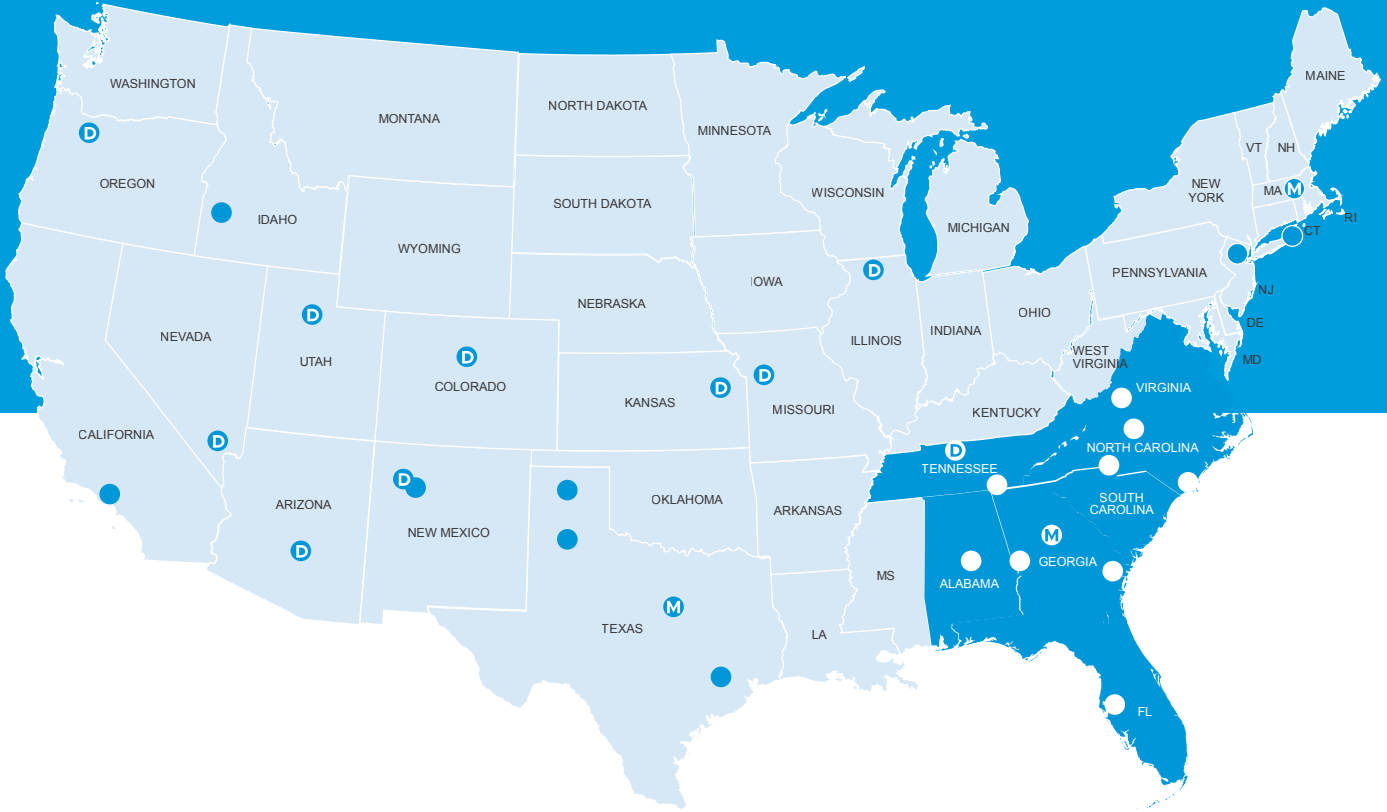
[CLICK TO VIEW BROCHURE](#)



[ADENTRA IMPORTS STOCK LIST](#)

[CLICK HERE TO SIGN UP SIGN UP](#)

# Servicing America



**D** Door Manufacturing

**M** Moulding and Millwork Manufacturing

## Rugby Southeast

**Atlanta, GA**

404-699-3900

**Kernersville, NC**

336-993-8686

**Birmingham, AL**

404-792-2290

**Roanoke, VA**

540-857-0425

**Charlotte, NC**

704-494-0703

**Savannah, GA**

912-965-1061

**Chattanooga, TN**

423-332-1377

**Tampa, FL**

813-888-6824

**Columbus, GA**

706-565-5337

**Wilmington, NC**

910-794-7225

**Albuquerque, NM**

505-924-2270

**Amarillo, TX**

806-352-2382

**Boise, ID**

208-336-3911

**Boston Metro - Stoughton**

781-341-9255

**Carlstadt, NJ**

201-807-9701

**Dallas, TX**

214-638-5161

**Denver, CO**

303-296-7260

**Houston, TX**

713-692-3388

**Kansas City, MO**

816-531-0161

**Las Vegas, NV**

702-248-0050

**Los Angeles, CA**

909-466-7315

**Lubbock, TX**

806-778-8902

**Nashville, TN**

615-885-0355

**NY Metro**

631-242-4369

**Olathe, KS**

913-738-8074

**Phoenix, AZ**

602-252-3696

**Portland, OR**

503-692-3322

**Rockford, IL**

815-965-9439

**Salt Lake City, UT**

801-972-9393

