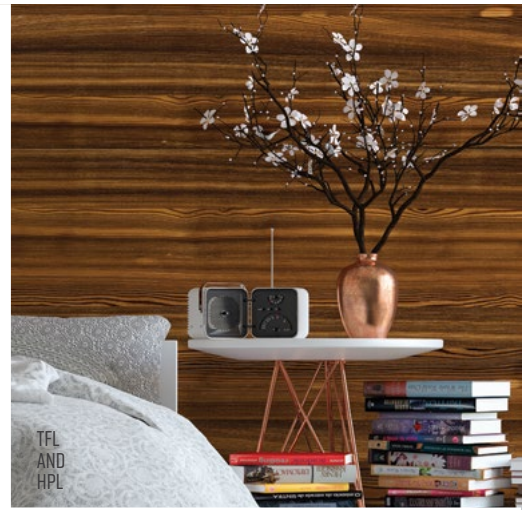




KITCHEN
HARDWARE



HARDWARE
AND
ACCESSORIES



TFL
AND
HPL



ADHESIVES



CATALOG

Southeast

· 2024 ·



VENEERS



KITCHEN
CABINETS



PANELS



SOLID
SURFACE

RUGBY®
Architectural Building Products



Rugby Architectural Building Products is pleased to present our 2024 Product Catalog that features an extensive assortment of ready-to-assemble and factory assembled cabinets. These cabinets are competitively priced, in stock, and ready-to-install. Solid Surface countertop material, laminate countertops, cabinet accessories and hardware round out the cabinet program.

To help you to quickly assess extensive information on all products we have a brochure-within-brochure feature that provides you with convenient access to more detailed product information. Be sure to check out a thought provoking TED talk video on page 27.

If you have any questions about products or services, please call us at **855-650-3265**.

The Rugby team is ready to assist and deliver these products to your door and remember:

**When you need cabinets,
you need Rugby!**



Table of Contents

iShopRugby.com 4

KCD Kitchen Cabinets6

Kitchen Kompact Kitchen Cabinets8

Staron: 100% Acrylic Solid Surface9

Shinnoki: Prefinished Wood Panels 10

Querkus: Textured European White Oak & Reclaimed Panels 11

Echo Wood: Reconstituted Wood Veneers..... 12

Veneer Tech: Premium Hardwood Sheet Veneer & Edgebanding 14

GL Veneer 15

VT Industries: Countertops 16

Columbia Forest Products Hardwood Plywood17

Dragon Ply: Premium Hardwood Plywood 18

Cabinet Grade Plywood 19

Adhesives: Titebond, Choice Brands 20

Composites: Arauco, Roseburg..... 21

Dollken: PVC Edgebanding22

Genesis Products: Drawer Systems23

Salice: Hinges, Drawer Slides.....24

Knape & Vogt: Slide Systems.....24

Rev-A-Shelf: Cabinet Accessories25

Price Industrial: Handles and Knobs.....26

Deerwood Fasteners.....26

Domestic Species: Hardwood Lumber27

Domestic Species: Softwood Lumber.....27

ADENTRA Imports28

Shop quickly and easily on

iShop **RUGBY**.com



Experience iShop **RUGBY**.com today!



+125,000

products online at
iShopRugby.com



SHOP

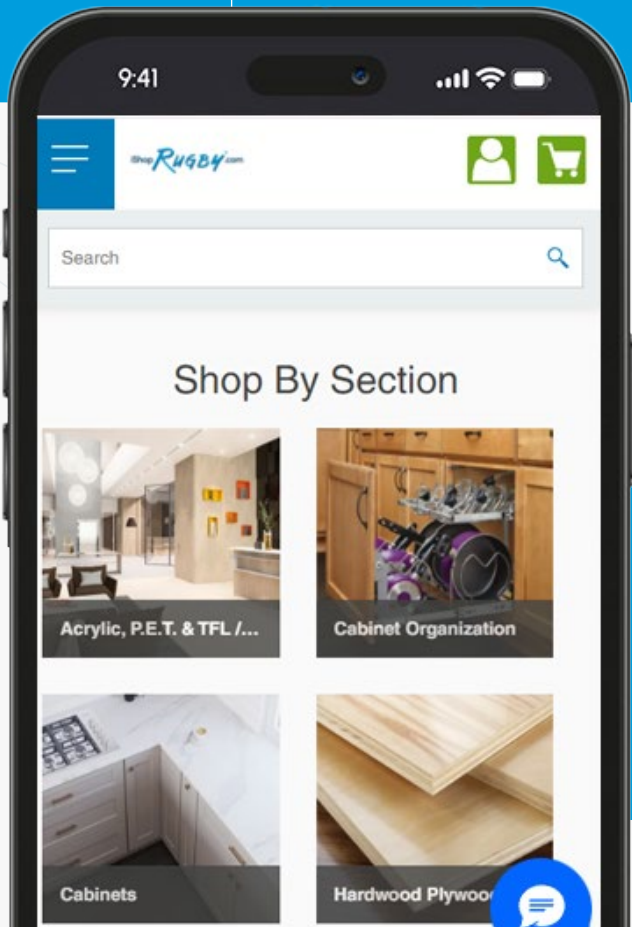
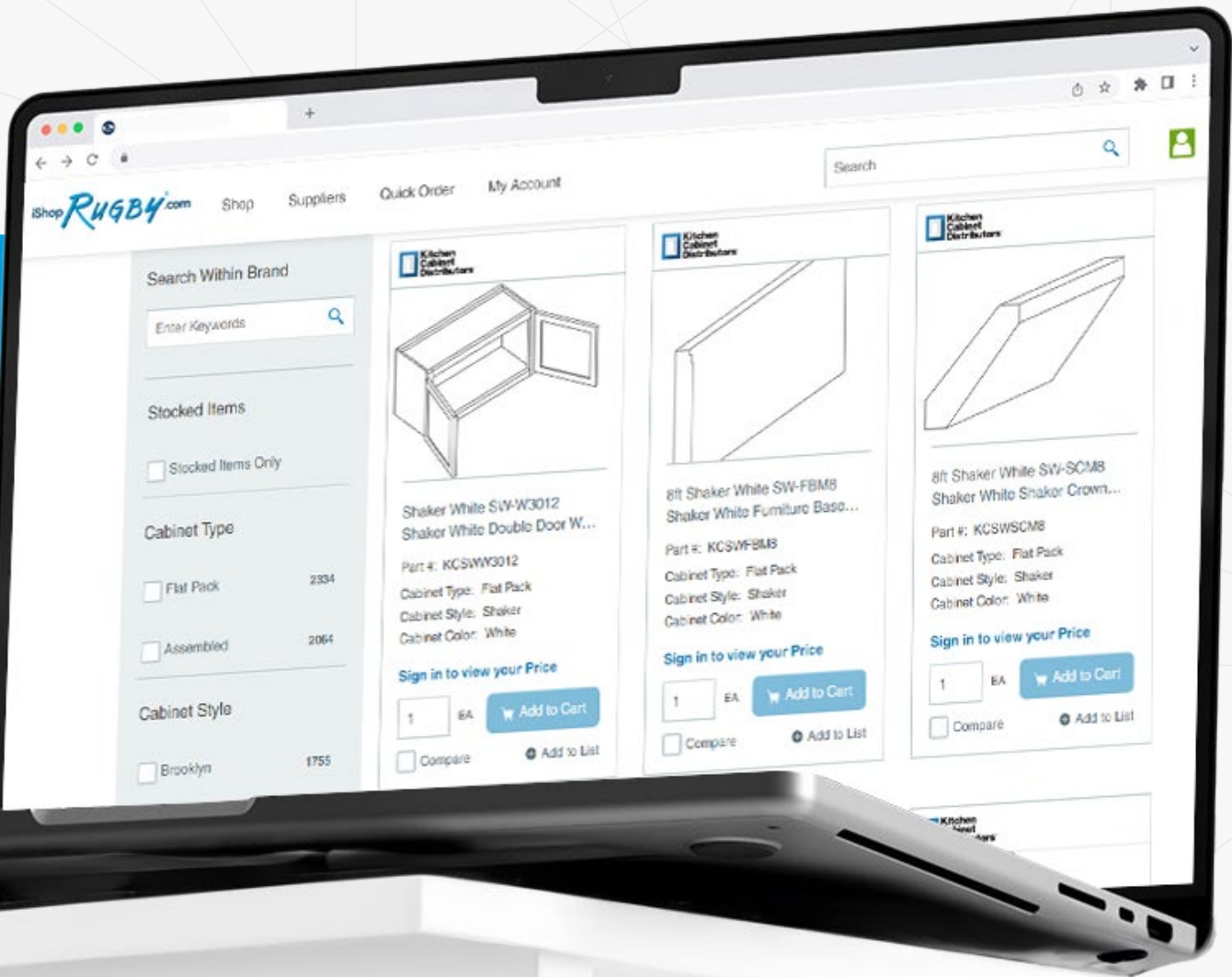
when it's most
convenient for
you 24/7



MANAGE

your account

- ✓ Place orders
- ✓ Check order status
- ✓ Research products
- ✓ ...and more!



SCAN
THE QR CODE
with your tablet or phone
to see KCD Products



When You Need Cabinets, You Need KCD!



You provide
the space, and
we'll provide all
the cabinet and
accessory solutions
you need to get the
job done right.

Count on Rugby to deliver precisely engineered cabinets with your choice of traditional or contemporary door styles along with an extensive assortment of Rev-A-Shelf accessories. All our products are engineered from high quality materials and backed by comprehensive product warranties.

- Over 1000 different cabinet accessory options
- Both contemporary and traditional door styles
- Comprehensive Rev-A-Shelf hardware program



[CLICK TO VIEW BROCHURE](#)

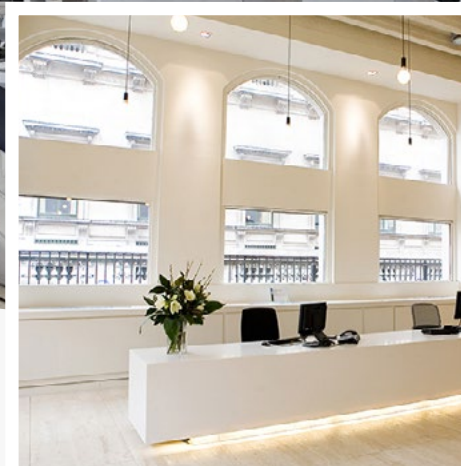
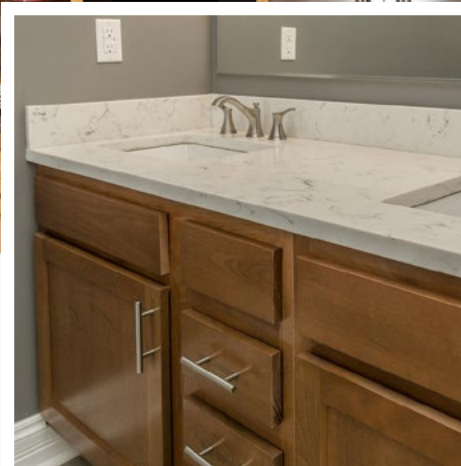
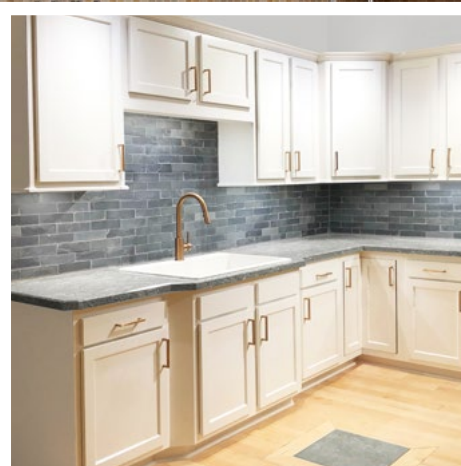


[CLICK TO VIEW BROCHURE](#)





staron®
Solid Surfaces



There's solid wood durability built into every KK cabinet. From the hardwood doors and stiles to the solid wood elements, each cabinet is built to last.

Note these quality features:

- All frames are built of solid 3/4" hardwoods. Each rail is kiln-dried, joined by mortise and tenon, and then glued for added strength
- Solid wood toe kicks, 3/4" thick
- Solid wood hanging strips on wall and base cabinets, located at the top and bottom
- End panels consist of 3-ply construction, 1/2" thick engineered wood core with hardwood veneers

All painted and stained cabinets are protected with a durable topcoat. The result is a surface that is virtually "family-proof," resisting many household chemicals, water, alcoholic beverages, mild acids, and even nail polish.

The result is more than just a kitchen you can cook in — it's a kitchen you can live in at a price you can live with.

Kitchen & Bath
Cabinetry



[CLICK TO VIEW
BROCHURE](#)

List Prices &
Specifications



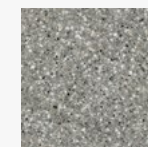
[CLICK TO VIEW
BROCHURE](#)

100% Acrylic Solid Surface

Staron high-performance acrylic solid surface is known for excellent workability and easy maintenance. Its homogenous, color-through composition is nonporous and ultra-hygienic, making Staron an ideal surfacing option for a wide range of commercial interior applications and residential spaces.

- 10-year limited commercial warranty
- Ultra hygienic / non-porous
- Thermo-formable
- 90 design inspired color options available
- Integrated sinks and bowls available.
- All ADA compliant
- Sample sets of Staron are available along with individual color samples

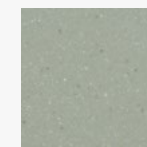
12 OF 90 COLORS STOCKED BY RUGBY



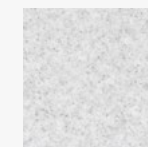
Pebble Grey



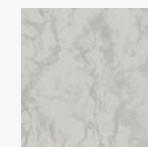
Venezia



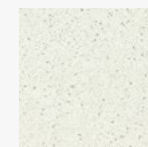
Meadow



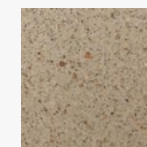
White Paper



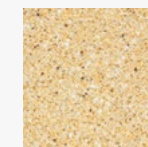
Dawn



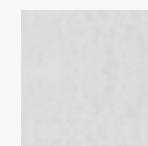
Bamboo



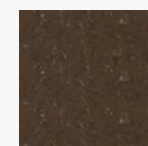
Glimmer



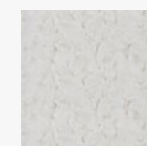
Rattan



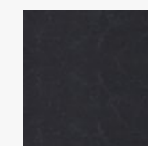
Cloudbank



Loam



Ocean View



Presto

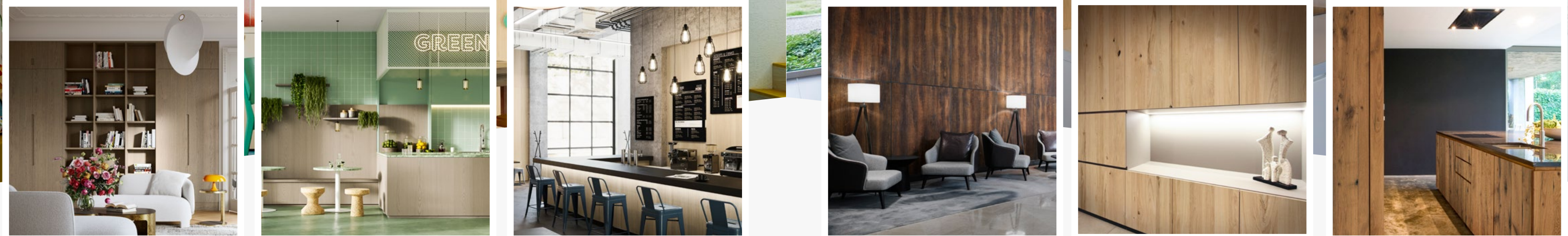


[CLICK TO VIEW
BROCHURE](#)



[SAMPLE BINDER
AVAILABLE](#)





Enhanced Shinnoki Collection
For 2024

- Prefinished wood panels – 5% sheen matte finish
- Mixmatching technique gives a natural look of solid wood
- Europe’s top designers put together range of selections
- Protective coat guards against marks and scratches
- 3/4” 4’ x 9’ NAF MDF – 2 sided
- Prefinished 0.6mm edgeband and 1mm ABS edgeband available
- FSC® certified available on request
- TSCA Title VI compliant

Prefinished
Wood Panels



CLICK TO VIEW
BROCHURE

Acoustical
Solutions



CLICK TO VIEW
BROCHURE



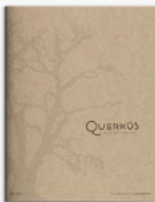
EDGEBANDING

18 DESIGNS STOCKED BY RUGBY

 Bondi Oak	 Milk Oak	 Pebble Triba	 Ivory Oak
 Ivory Infinite Oak	 Natural Oak	 Frozen Walnut	 Manhattan Oak
 Desert Oak	 Sahara Oak	 Terra Sapele	 Cinnamon Triba
 Smoked Walnut	 Pure Walnut	 Shadow Eucalyptus	 Raven Oak
 Burley Oak	 Stardust Walnut		

Textured European White Oak
& Reclaimed Panels

- Wire brushed & patented “saw effect” scratching
- Mixmatch technique to give natural appearance of solid wood
- Thick cut veneer for deep brushing and scratching
- European white oak – matched for color consistency
- Reclaimed veneer from railways in Europe
- 20mm 48.8” x 98.4” on MDF
- 0.8mm and 1mm edgeband available, brushed and scratched



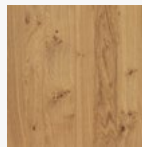
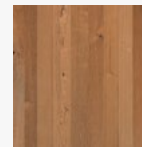


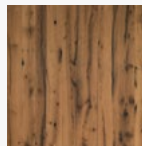
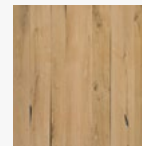
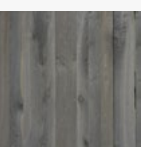
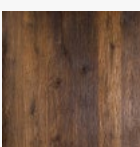
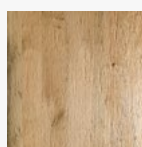
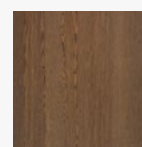

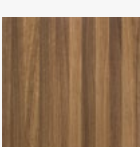
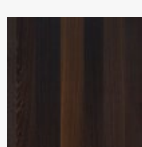


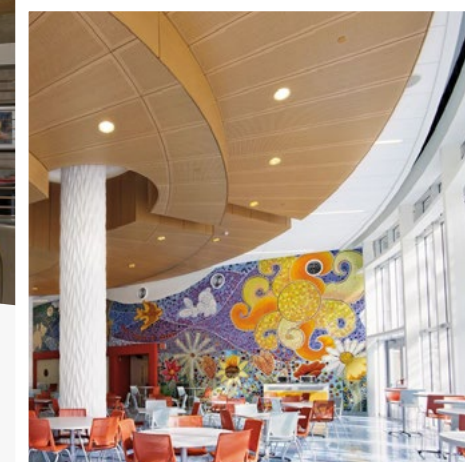
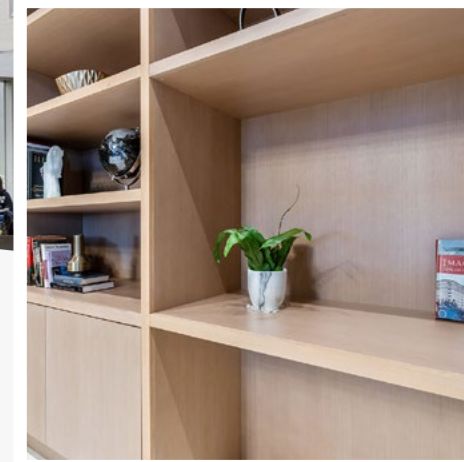
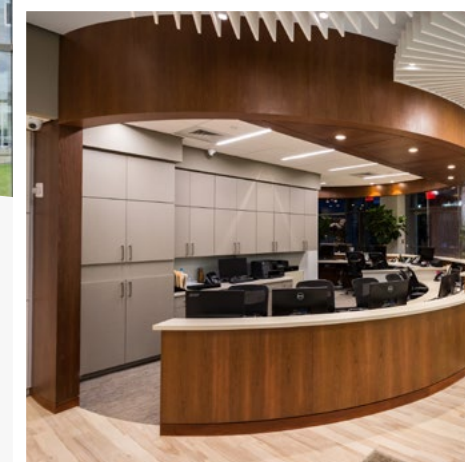
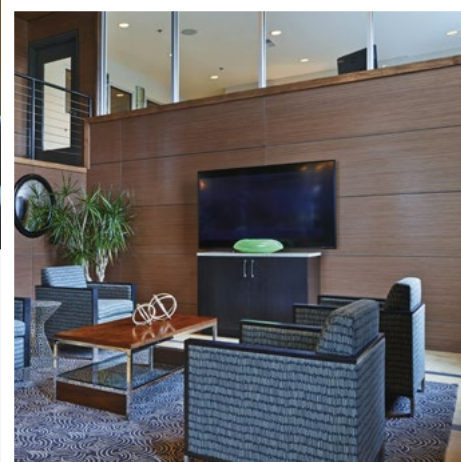
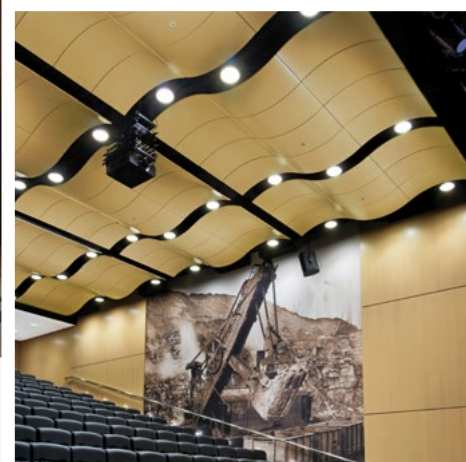
CLICK TO VIEW
BROCHURE



EDGEBANDING

15 AVAILABLE DESIGNS

 Adagio	 Allegro	 Vivace	 Retro Hoboken
 Retro Harlem	 Retro Baltimore	 Original Hoboken	 Original Harlem
 Original Baltimore	 Intense Hoboken	 Intense Harlem	 Intense Baltimore
 Smoked Havana	 Smoked Arabica	 Smoked Robusta	



Reconstituted Wood Veneers

- High quality, reconstituted, real wood veneer
- 0.6mm and 2.0mm matching edgebanding
- Veneer sheets or custom panel lay up
- Subject to volume and lead time, an infinite array of custom colors and patterns available
- NAUF and NAF options
- FSC® certified available on request



A&D BINDER



SAMPLE FAN DECK



EDGEBANDING

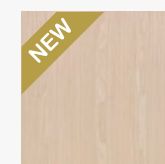


CLICK TO VIEW BROCHURE

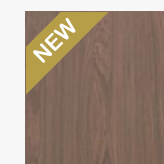
Our reconstituted wood products echo nature's most desired and rare species without impacting the sustainability of these great forests. The use of common wood fiber from well managed, plantation grown and FSC® certified forests, are used for the production of Echo Wood® products.

Reconstituted veneer provides the same look as the most expensive and rare woods. Echo Wood® provides the highest quality, architectural wood veneers, panels and edge tape that are defect free and consistent in color and grain.

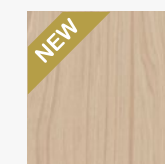
16 AVAILABLE DESIGNS



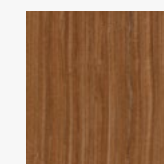
River Pine



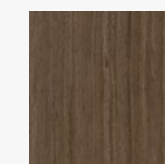
Mountain Walnut



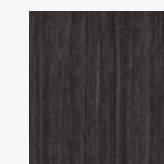
Desert Acacia



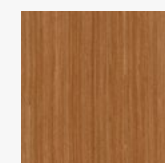
Qtr. Cherry



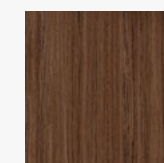
Qtr. Walnut



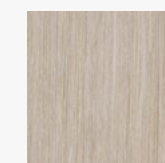
Slate



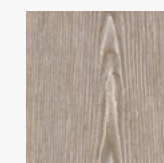
VG Fir



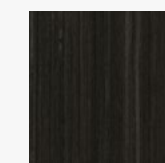
Qtr. Teak



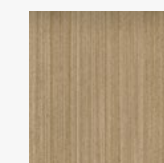
Monterey



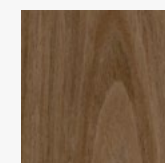
Napa



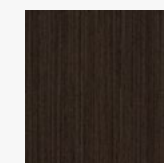
Qtr. Gun Metal
Ebony



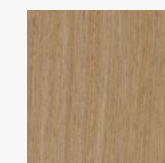
Qtr. Champagne
Ebony



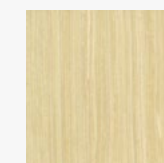
PS Walnut



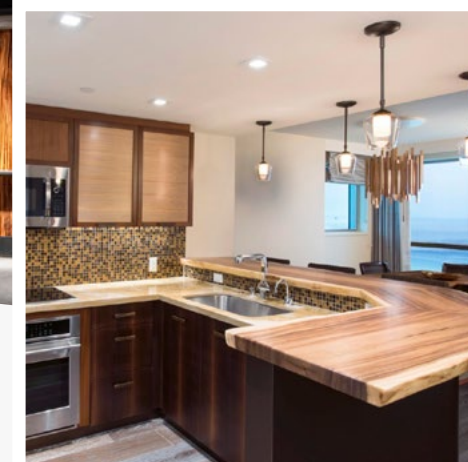
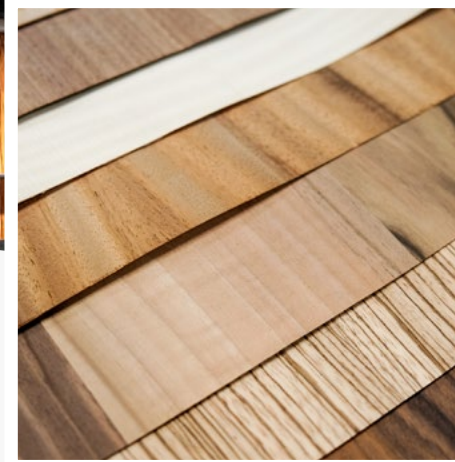
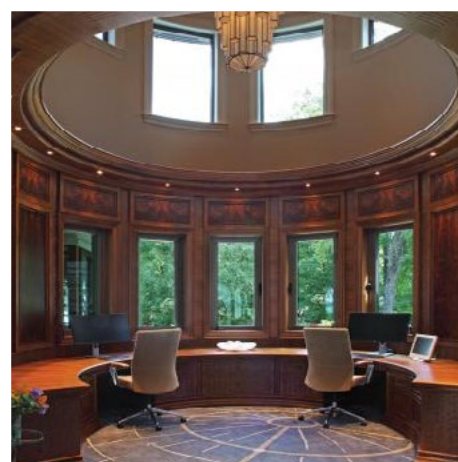
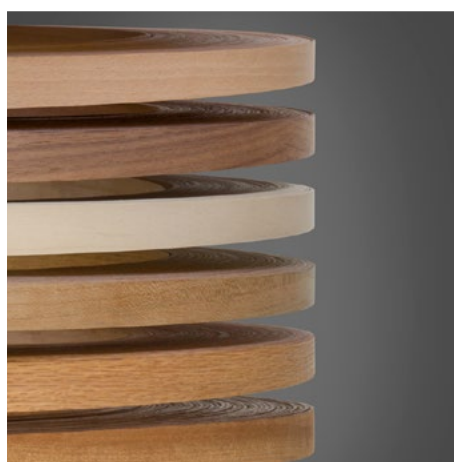
Qtr. Wenge



Rift White Oak



Qtr. Maple



Premium Hardwood Sheet Veneer & Edgebanding

Veneer Technologies, Inc. manufactures high end decorative hardwood veneer faces. They carry most domestic species and have access to many exotic species from around the world. They currently operate ten continuous cross feed splicers, producing approximately 6.5 million finished square feet of face veneer per month.

Sheet Veneer

Manufactured with a select grade face veneer crosslinked to a variety of backers. Backers include 10 mil, 20 mil, 2-ply with cross-grain back, 3M peel-n-stick, polyback, true phenolic. Sizes are 4' x 8', 4' x 10', 4' x 12'.

Wood Edgebanding

- Standard wood edgebanding
- 500' rolls, fleeced and sanded
- 250' rolls, preglued EVA hotmelt
- UV prefinished, preglued or fleece backed
- Widths ½" to 2"
- Custom widths and lengths available

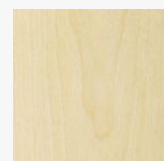
Melamine Edgebanding

- Standard colors
- 250' rolls
- Preglued

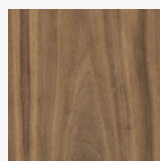
Thick Wood Edge Rolls

- 328' rolls. Thickness 1mm, 1.5mm, 2mm and 3mm

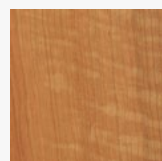
MANY DOMESTIC AND EXOTIC SPECIES AVAILABLE



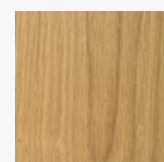
White Maple



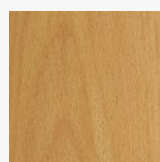
Walnut



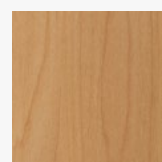
Cherry



White Oak



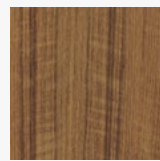
European Beech



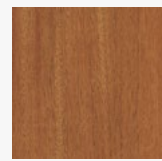
Alder



Sapele



Teak



Mahogany

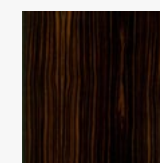


CLICK TO VIEW BROCHURE

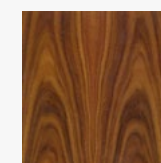
With more than 880 ready-to-ship wood veneer products in stock — literally billions of square feet of material — GL Veneer features one of the most extensive wood veneer sheet inventories in North America.

- 200+ Species
- Leveneer™ – Proprietary wood material for contour applications
- Meet every specification – color, grain, figure, cut, match, size and backer
- Standard & Custom Sizes – Pre-cut, standard sheets or any special request, made-to-order size

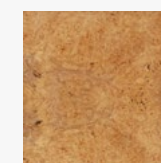
MANY OPTIONS AVAILABLE



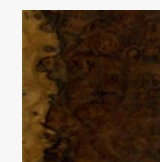
Macassar Ebony



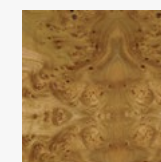
Santos Rosewood



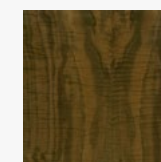
Maple Burl



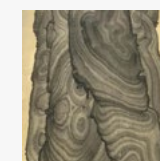
Walnut Burl



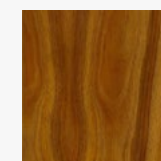
Carpathian Elm Burl



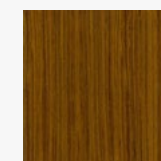
Figured Claro Walnut



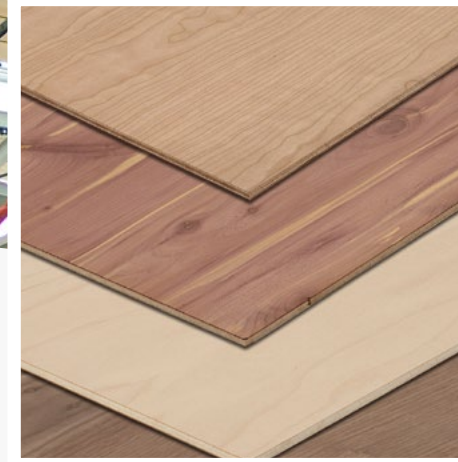
Ziricote



Koa Premium



Quartered Teak



In addition to vanities, VT Industries is a leading manufacturer of countertops, offering homeowners dynamic options, including granite, VT TruQuartz™, VT Dimensions® and VT VersaTop™. We also offer a variety of distinctive edge profiles designed to bring custom style to any kitchen, bath or bar project.

VT Dimensions® countertops bring everything together in one seamless offering — from the slab-like core, to the naturally beautiful surface, to the premium edge profiles.

- State-of-the-art manufacturing assures your satisfaction every time
- 45-lb. industrial particleboard as standard (meets HUD and government specs; ANSI approved)
- EQ countertops are FSC® certified to originate from responsibly managed forests
- GREENGUARD Gold Certified for low chemical emissions
- PVA glue line provides strongest possible bond between particle board and laminate



CLICK TO VIEW BROCHURE

Founded in 1957, Columbia Forest Products is North America's largest manufacturer of hardwood plywood and hardwood veneer products. Columbia's decorative interior veneers and panels are used in high-end cabinetry, fine furniture, architectural millwork and commercial fixtures.

- Species: Various
- Face grades: A,B,C,D,E
- Back grades: 1,2,3,4
- Sizes: 4×6, 4×7, 4×8, 4×10, 5×8, 8×4
- Thickness: 1/8" to 1-1/4"
- Core types: JayCore®, KayCore®, veneer core, particleboard core (PBC), medium density fibercore (MDF), combination core, Classic Core®, lumber core
- UV Capabilities
- FSC® certified available on request



EDGEBANDING

Hardwood Plywood



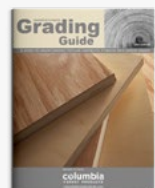
CLICK TO VIEW BROCHURE

Appalachian Traditions

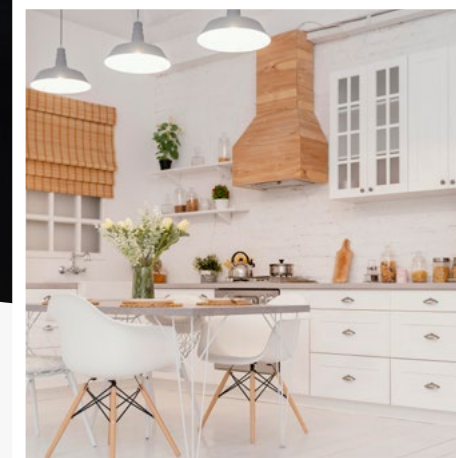
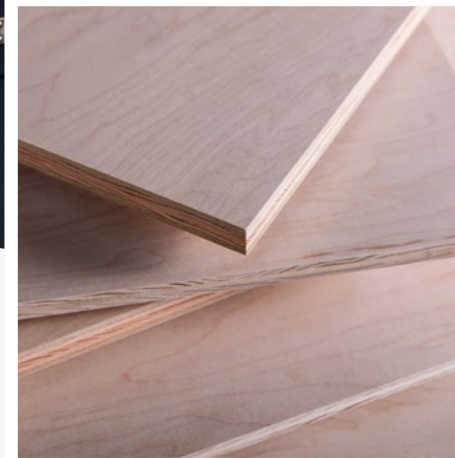


CLICK TO VIEW BROCHURE

Grading Guide



CLICK TO VIEW BROCHURE



Building on the reputation of quality and consistent performance, Dragon Ply is proud to present the newest offerings from South East Asian region of the globe.

- New countries of origin and new fiber supply chains
- The same consistent quality, performance and cost savings advantage
- Available in both thick and thin face options
- Thick fancy veneers are graded on HPVA standards and composed at state-of-the-art facilities
- FSC® certified available on request
- TSCA Title VI compliant






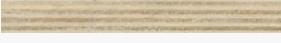

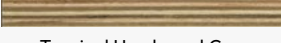

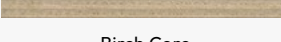
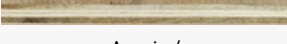
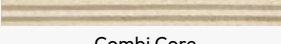

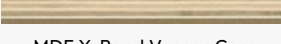
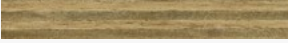
Common Species

- European Beech
- White Maple
- Alder
- Hickory
- Black Walnut
- Ash
- White Birch
- Red Oak



CLICK TO VIEW
BROCHURE

AVAILABLE CORES

NEW		NEW	
	Rubberwood Core		Eucalyptus / Malabar Combi Core
			
	Eucalyptus Core		Poplar
			
	PBC Core		Poplar Veneer Core <i>Also available as FSC® Mix 98%</i>
			
	Lumber Core		Tropical Hardwood Core <i>Also available as FSC® Mix 98%</i>
			
	Radiata Pine / Mixed Hardwood Combi Core		Birch Core <i>Also available as FSC® Mix 98%</i>
			
	Acacia / Eucalyptus Combi Core		Combi Core <i>Also available as FSC® Mix 98%</i>
			
	MDF Core		MDF X-Band Veneer Core <i>Also available 7-Ply</i>
			
	Ultra Light Weight		

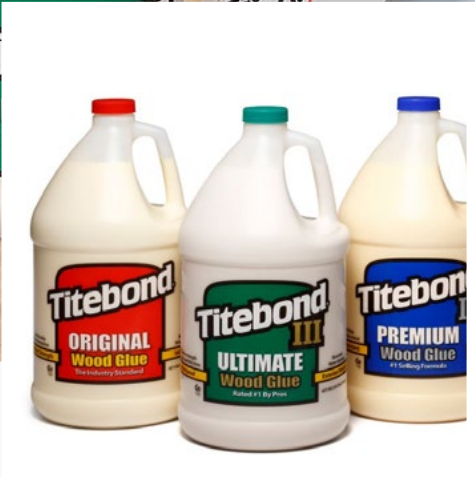
- Directly sourced and imported by Rugby
- Quality control inspected by our onsite staff ensures consistent performance and value
- Acacia/Eucalyptus Veneer Core provides flat and stable panels
- Thickness tolerance +/- 0.5mm
- Moisture content under 14%
- Our corporate compliance program ensures a responsible and legal supply chain
- TSCA tested and certified



CLICK TO VIEW
BROCHURE



Adhesives



Rugby is a full line distributor of all Titebond & Franklin products.

We are proud to offer:

- Titebond I, II & III Wood Glue
- Color matched caulking
- Heavy Duty Construction Adhesive
- Fast Set Polyurethane Construction Adhesive
- FRP Solvent Free Adhesive
- Weather Master Sealants
- Ultimate MP
- Silicones



CLICK TO VIEW
BROCHURE



Choice Brands Adhesives started in 2010 to provide industrial adhesives to a wide variety of markets and applications. Our company was founded by experienced adhesive veterans formerly with Imperial Adhesives / Sovereign Adhesives / Henkel Adhesives.

We serve a wide variety of markets:

- Cabinets and Millwork
- Countertops
- Office Furniture
- Case Goods
- Panel Lamination
- Furniture
- Foam Fabricating
- Bedding
- Sporting Goods
- Commercial Roofing
- Insulation
- Waterproofing
- Marine
- Recreational Vehicle
- Automotive Aftermarket



CLICK TO VIEW
BROCHURE

Composites



arauco

- 1/2" - 1-1/8" thick, 4', 5' and 6' wide
- Cut to size and countertop sizes
- CARB2, ULEF, NAF, FSC® Certified
- Available in water-resistant, fire-rated and FSC® certified
- Products include Duraflake, Vesta, Terra



CLICK TO VIEW
BROCHURE

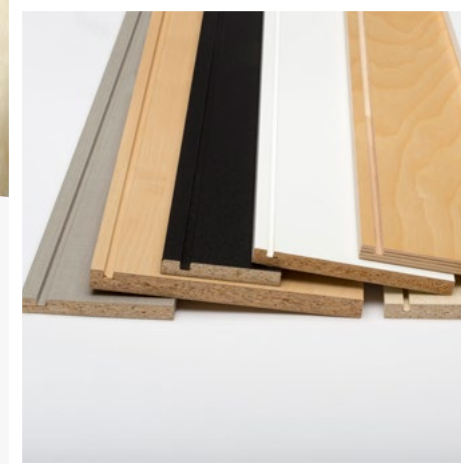
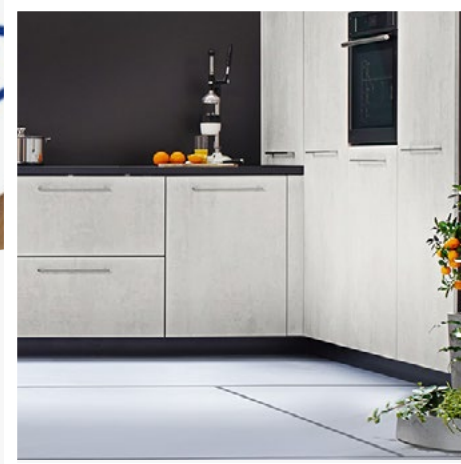


Roseburg produces one of the most popular machinable particleboard panels on the market today. Our UltraBlend panels are a premium-quality, mat-formed, multilayer wood particle board. These panels are made predominantly of precision-refined wood particles that are bonded with thermosetting resins.

UltraBlend features a highly refined smooth surface and tight uniform core with machinable edges and excellent dimensional stability. UltraBlend particleboard panels are designed for the demanding laminating and edge machining applications of today's precision woodworking industry.



CLICK TO VIEW
BROCHURE



PVC Edgebanding

Doellken PVC Edgebanding is the finest, most consistent product available on the market today. Typical applications of PVC Edgebanding include residential and office furniture, institutional case goods (laboratories, hospitals, medical offices, schools, etc.), store fixtures, kitchens, locker rooms and numerous others. Doellken Edgebanding comes in thicknesses of .018" (0.45 mm) to 3 mm and widths ranging from 5/8" (16mm) to 2-3/16" (55mm).

- ◆ The SpecLine and DoellkenFlex program are available from stock in 5 different sizes
- ◆ All edgebanding products are available in solid colors, designer patterns and woodgrains
- ◆ With 11 different embosses, your edgebands will have a natural appearance and a deep emboss feel



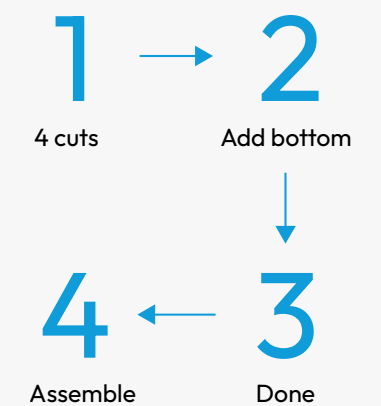
CLICK TO VIEW
BROCHURE

Genesis knows that selecting a drawer manufacturer is a major decision. You want to make sure you get the quality your project demands, the price that affords you a profit and the service you deserve. Genesis has manufactured quality drawer systems for more than 30 years and has built its success on service, value and superior craftsmanship.

To maximize the functionality of your drawer space Genesis offers multiple storage and convenience options. In order to build the highest quality wood drawers, you have to start with the finest quality materials. For that, Genesis select from the most beautiful domestic species including Maple, Tilia, Cherry and Red Oak.

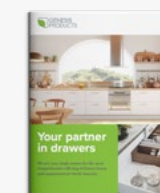
- ◆ Tilia bottom thickness -1/4", Bottom thickness for Maple, Cherry & Red Oak is 3/8"
- ◆ Custom hieghts ranging from 1½"to 15"
- ◆ English dovetail construction
- ◆ 3/8" bottoms made from VC plywood
- ◆ Durable clean satin finish is standard (Unfinished or staining available upon request)
- ◆ Standard eased top edge (Straight top edge available upon request)
- ◆ Front drilling
- ◆ White vinyl wrapped

Choose From A Large Variety Of Genesis Blank Options



Drawers

Drawer Blanks



CLICK TO VIEW
BROCHURE



CLICK TO VIEW
BROCHURE

Kitchen Hardware



SALICE

Established in 1989, Salice America reflects the leadership claimed by the European parent company for over 50 years.

A complete product line of concealed hinges, drawer slides and sliding door systems made our company the technology leader of the market, a never ending task requiring solid engineering and innovative mentality.



KNAPE & VOGT®

Knap & Vogt design and manufacture precision, Euro-style and utility slide systems; wall-attached shelving for commercial, home and garage applications; kitchen, closet and bath storage; office and healthcare ergonomics products and specialty hardware. We offer these products under several well-known brand names: KV®, KV Waterloo®, HyLoft®, Real Solutions for Real Life®, John Sterling™ and Shelf-Made®.

**Futura
Runners**



**CLICK TO VIEW
BROCHURE**

**Pacta
Hinge**



**CLICK TO VIEW
BROCHURE**

**Silentia
Hinges**



**CLICK TO VIEW
BROCHURE**

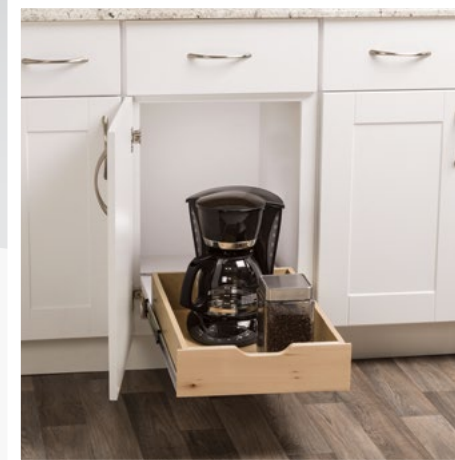
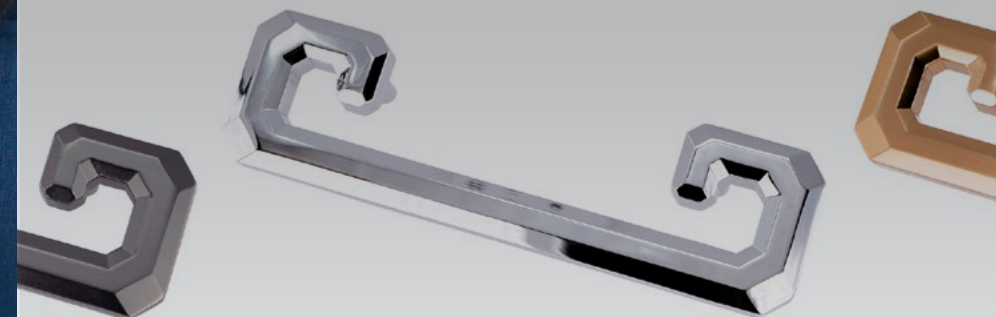
**Wind Lift
System**



**CLICK TO VIEW
BROCHURE**



**CLICK TO VIEW
BROCHURE**



Wide Range of Cabinet Accessories

Rev-A-Shelf was established in 1978 as a division of Jones Plastics and Engineering, a family owned injection molder of appliances parts, and other custom polymer components (ISO 9002 Certified) with five manufacturing facilities in Kentucky, Tennessee, and Monterrey, Mexico.

Our Product line began as metal and polymer Lazy Susan components manufactured for the largest U.S. cabinet manufacturers and has grown into the market leading innovator of quality, functional residential cabinet storage and organizational products such as Lazy Susans, Kitchen Drawer Organizers, Base Cabinet and Pantry Pull-Outs, functional Waste Containers, LED lighting systems and Childproof Locking System.

Our worldwide presence extends from the U.S. to Europe, Asia, and Mexico, with factories, warehouses and satellite offices strategically located to serve an expanding customer base of kitchen dealers, architects, furniture manufactures, cabinet industry distributors and retail home centers worldwide.



[CLICK TO VIEW BROCHURE](#)



PRIDE INDUSTRIAL
DECORATIVE FUNCTIONAL HARDWARE & MORE

Pride Industrial is a premier manufacturer of hardware for the woodworking industry. We firmly believe in top quality products and the most reliable service.

Our extensive product lines include: elegant designs of handles and knobs for cabinetry and furniture; hand carved wood such as corbels, bar brackets, island posts, onlays and vanity legs.

Decorative Hardware

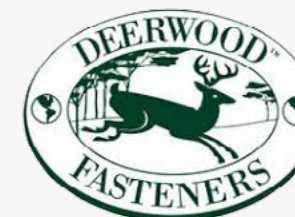


[CLICK TO VIEW BROCHURE](#)

Functional Hardware

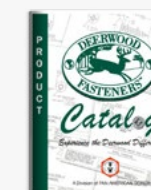


[CLICK TO VIEW BROCHURE](#)



Deerwood Fasteners™ is a leading supplier of High Quality Fasteners manufactured exclusively for woodworking applications. We service our nationwide customer base from our headquarters in Conover, NC and a regional warehouse in California.

Our products include Hinge and Hardware screws in a variety of finishes, Zip Drivers (Self drilling, Self-Counter sinking assembly screws), Painted Head Cabinet Installation screws, Decking screws, Face Frame screws, Drawer Front Adjuster Screws and much, much more.



[CLICK TO VIEW BROCHURE](#)

Hardwood Lumber

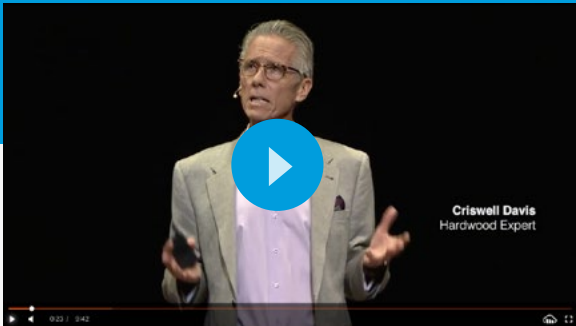


Domestic Species: Hardwood

- 4/4 through 16/4. All lengths and grades
- S2S, SL1E and ripping available
- Width sorted Red Oak, Hard Maple, and Poplar
- S4S, Sanding and Custom millwork packages including custom knife grinding available

TED Talks: How Hardwood Lumber Improves Our Lives

– Criswell Davis | Hardwood Expert



WATCH NOW

Alder	Ash	Beech - American	Birch
Birch - Western	Birch - Red	Birch - White	Birch - Western
Cherry	Hickory	Maple	Maple - Hard
Maple - Western	Oak - Red, Rift & QTR	Oak - White	Poplar

Domestic Softwood

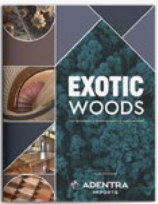
A comprehensive assortment of Domestic and Imported Options

Cedar / Aromatic	Cedar / Western Red CVG	Fir / Vertical Grain
Southern Yellow Pine	Cypress	White Pine / Eastern Knotty

Imported Species

To ensure prompt supply of exotics and imports, Hardwoods import consolidation yard is located in Leland, North Carolina.

African Mahogany	Afromosia	Anigre	Genuine Mahogany	Iroko	Jatoba
Padouk	Purpleheart	Sapele	Spanish Cedar	Teak	Tigerwood
Utile (Sipo)	Wenge	Zebrawood			

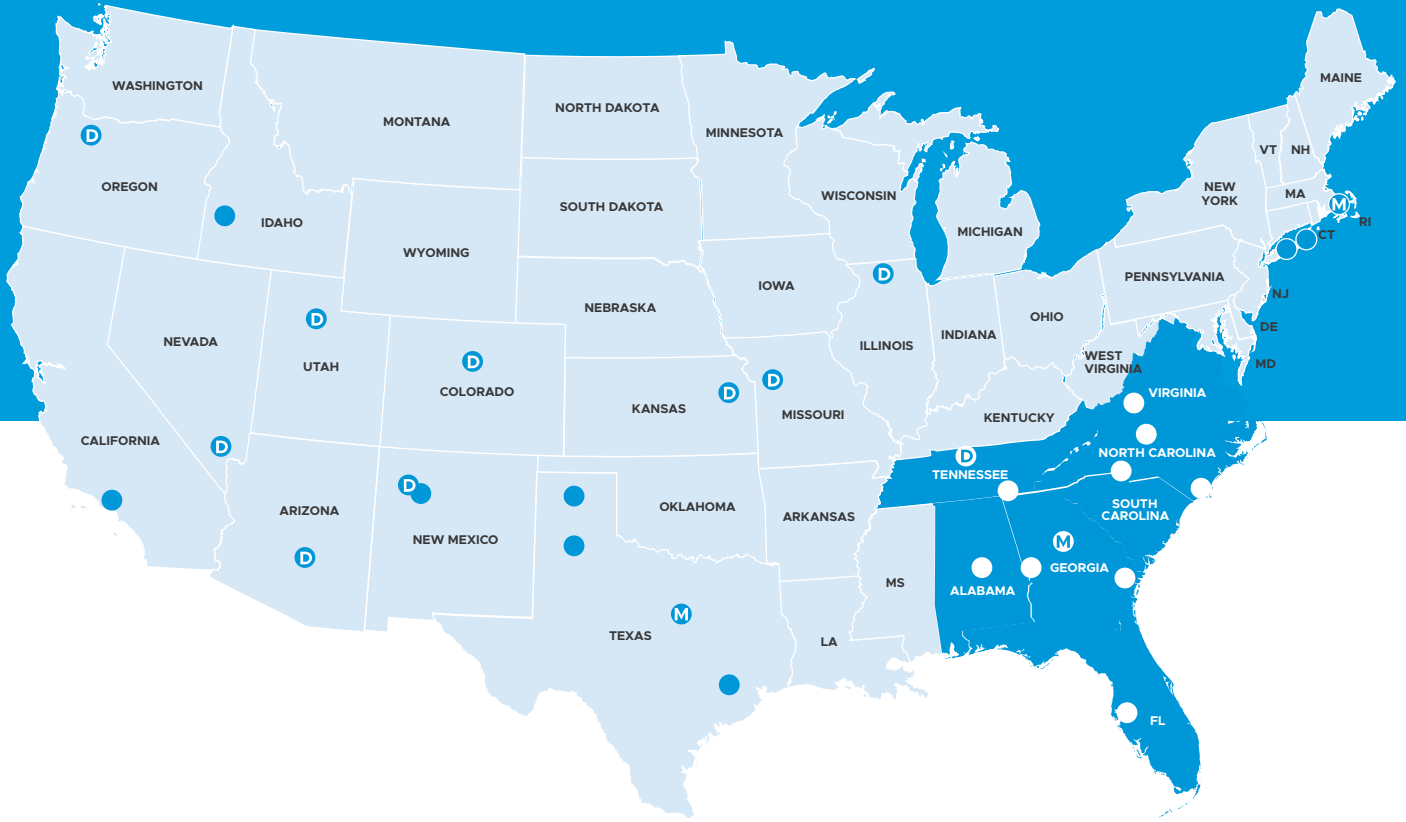


CLICK TO VIEW BROCHURE



ADENTRA IMPORTS STOCK LIST
 [CLICK HERE TO SIGN UP SIGN UP](#)

Servicing America



D Door Manufacturing

M Moulding and Millwork Manufacturing

Rugby Southeast

Atlanta, GA

404-699-3900

Kernersville, NC

336-993-8686

Birmingham, AL

404-792-2290

Roanoke, VA

540-857-0425

Charlotte, NC

704-494-0703

Savannah, GA

912-965-1061

Chattanooga, TN

423-332-1377

Tampa, FL

813-888-6824

Columbus, GA

706-565-5337

Wilmington, NC

910-794-7225

Albuquerque, NM

505-924-2270

Carlstadt, NJ

201-807-9701

Kansas City, MO

816-531-0161

Nashville, TN

615-885-0355

Portland, OR

503-692-3322

Amarillo, TX

806-352-2382

Dallas, TX

214-638-5161

Las Vegas, NV

702-248-0050

NY Metro

631-242-4369

Rockford, IL

815-965-9439

Boise, ID

208-336-3911

Denver, CO

303-296-7260

Los Angeles, CA

909-466-7315

Olathe, KS

913-738-8074

Salt Lake City, UT

801-972-9393

Boston Metro - Stoughton

781-341-9255

Houston, TX

713-692-3388

Lubbock, TX

806-778-8902

Phoenix, AZ

602-252-3696



Toll Free: 1-855-650-3265

| www.rugbyabp.com

| www.iShopRugby.com

January 2024