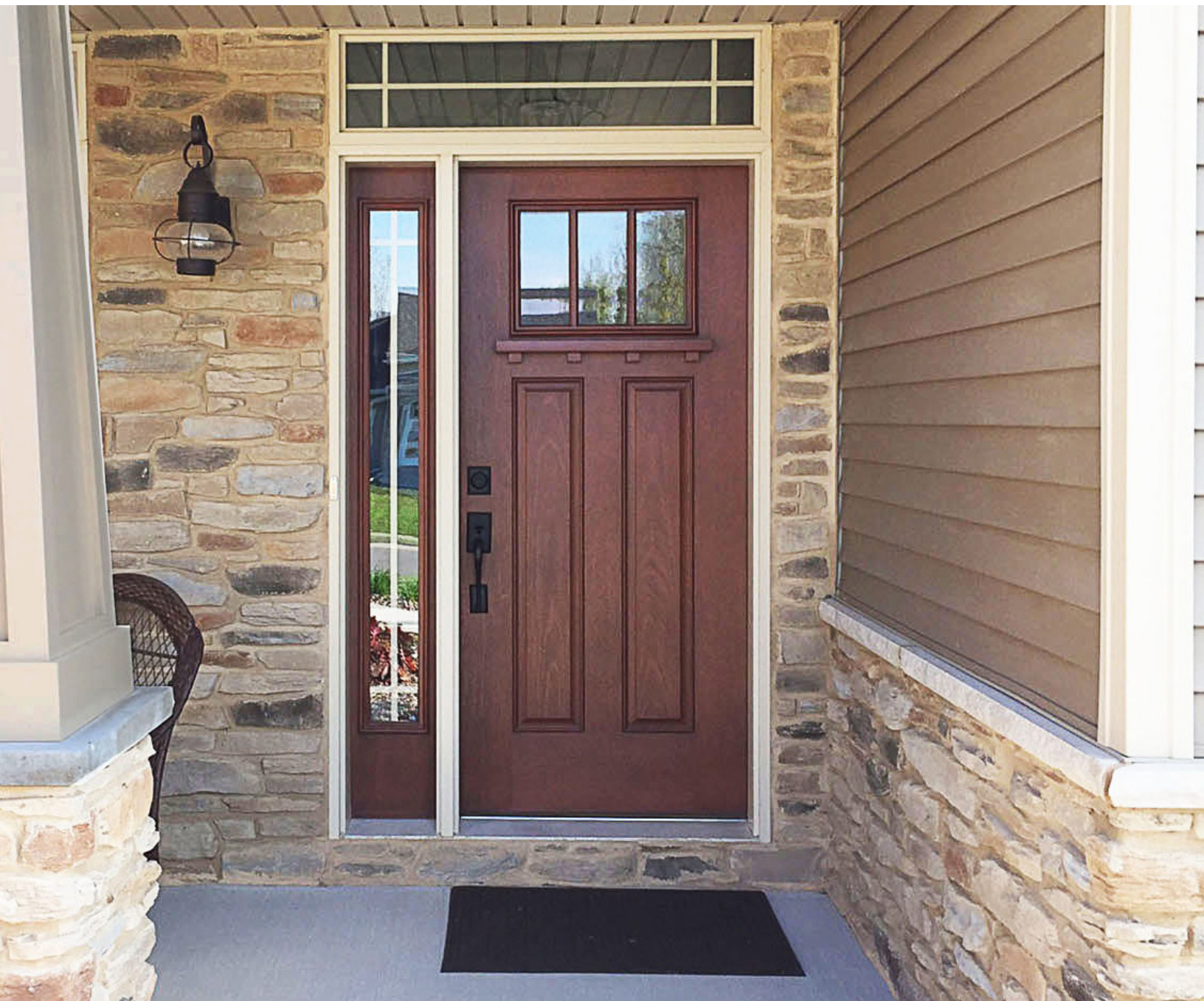


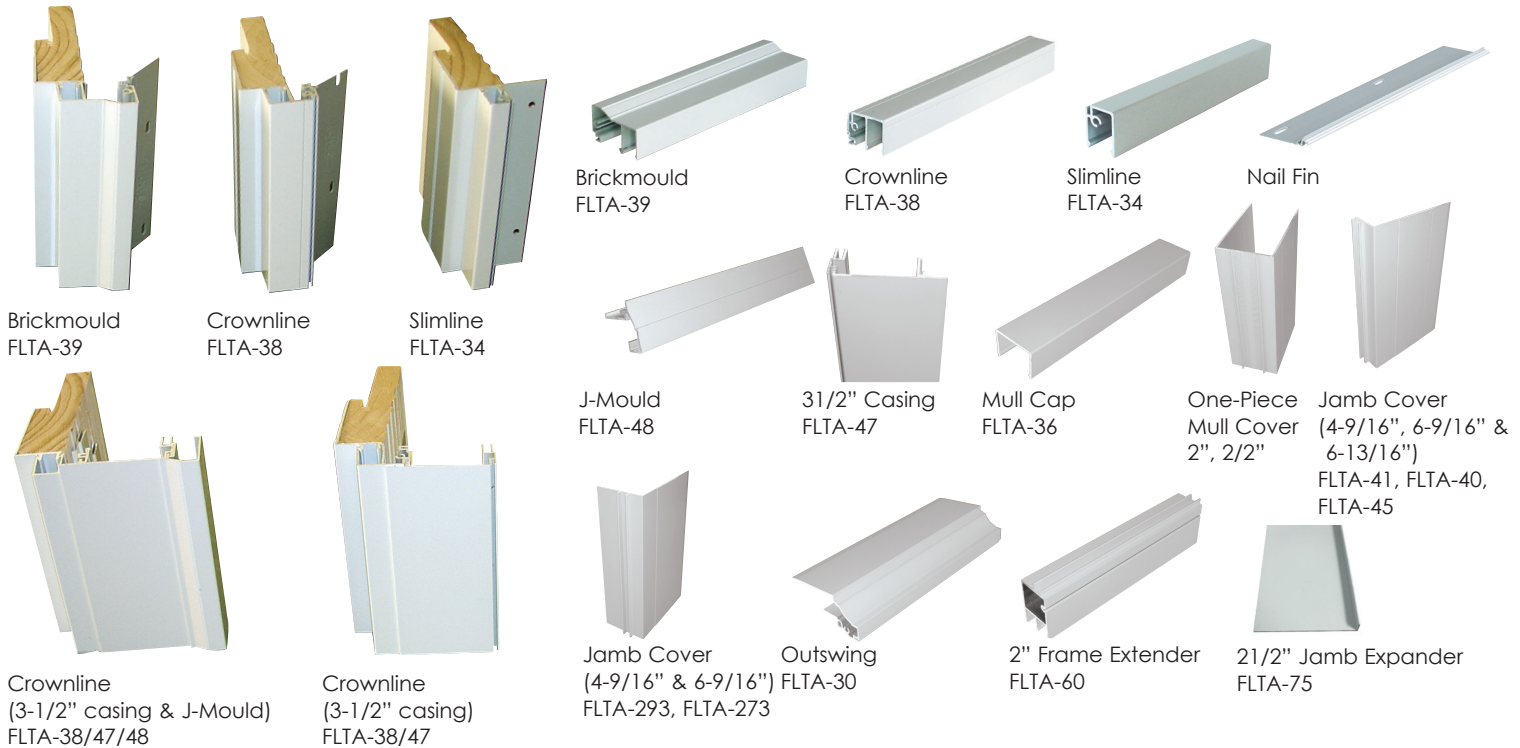
ENTRY DOOR CLADDING

A REVOLUTIONARY CLAD SYSTEM THAT
IMPROVES CURB APPEAL AND ADDS VALUE



Entry Door Cladding

CLASSIC SYSTEM



FEATURES:

- Heavy-duty extruded aluminum
- No chipping, no cracking, no peeling
- Brickmould: Same dimension and profile as wood 180 brickmould.
- Crownline: A medium width nosing profile.
- Slimline: Nosing profile to match clad window systems.
- 3-1/2" Casing: When applied to Crownline provides wide casing profile.
- J-Mould: When applied to 3-1/2" Casing provides decorative border profile.
- Mull covers
- Jamb Extenders
- Flexible or rigid nail fin
- Heavy-duty .062 aluminum
- No exposed fasteners.
- Works on any manufacturing entry door system.

REMODEL CLADDING SERIES

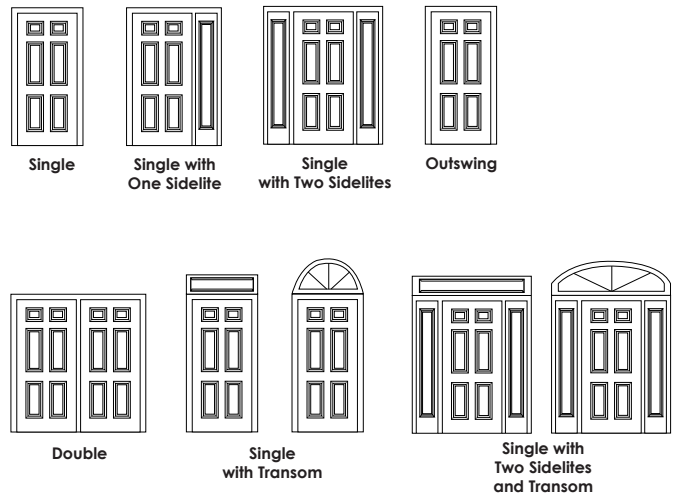
- Designed and engineered to fit into the existing footprint of yesterday's exterior brickmould casing leaving the outside of your home undisturbed.
- Additional exterior casing and trim accessories are available to fit almost every remodeling application.

STANDARD COLORS:



**Limited profiles - Contact Customer Service

CLAD ANY DOOR CONFIGURATION YOU WANT



1100 S Huron Rd, Green Bay, WI 54311 | 920-393-1340 | www.frontlinebldg.com

Proudly Supplied By



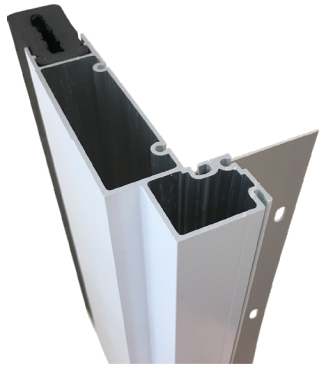
815-965-9439 | www.rivercitymillwork.com

EDC/SS750/0920PTP

PRO-SERIES ALUMINUM GARAGE DOOR FRAMES

THE LIFETIME SOLUTION TO PREFINISHED AND MAINTENANCE-FREE GARAGE DOOR FRAMES





Pro-Series Cutaway



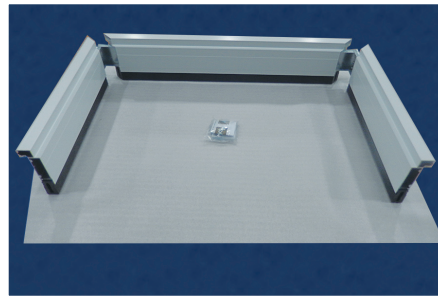
90° Square Corner



45° Clipped Corner



Arch Top



Pro-Series Exploded View

90° & 45° FRAMES | FEATURES:

- Easy installation - Five minutes to assemble, twenty minutes to install
- Available with 90° square or 45° clipped corners
- .062 (16 gauge) extruded aluminum for strength and durability - with composite insert
- Heavy-duty steel corner gussets for perfectly mitered corners
- No wood in frames means no rot, no water wicking, no warping, and no bug infestation
- Optional 3-1/2" flat casing and J-mould (both field applied)
- Compliments the FrontLine entry door cladding system
- Limited Lifetime Warranty

ARCH TOP FRAMES

- 10" rise standard; 12" rise optional
- Crownline nosing only

SIZES AND COLORS

- Stock sizes - 8', 9', 10', 16', and 18' widths; 7' and 8' heights
- Stock colors - White, Sandstone, Bahama Brown, Bronze, Terratone, Green, Almond, Eggshell, Beige, Wineberry and Black (Black available only in the 90° and 45° frames)
- Custom Sizes Available

Proudly Supplied By

**RIVER CITY
MILLWORK**

1-815-965-9439 | www.rivercitymillwork.com